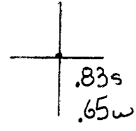


Latitude



Longitude

Topo Location

7.5' Loc. _____ 15' Loc. _____
 _____ (calc.) _____

Company Dunn Max O+G

Farm Joseph Varner Has #9

15' Quad _____
(sec.)

7.5' Quad Blacksville

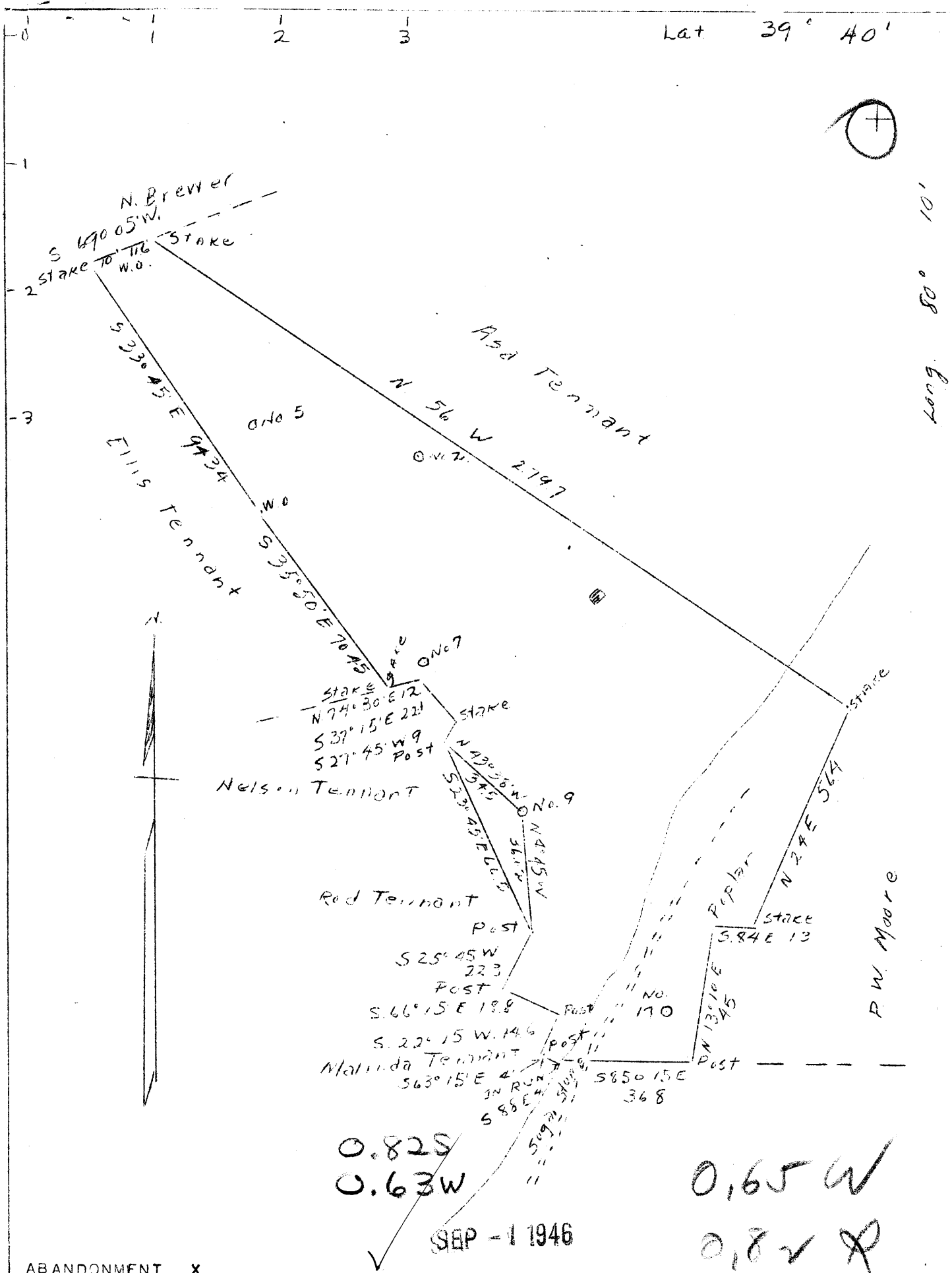
District Clay

WELL LOCATION PLAT

County 061 **Permit** 30332

Lat 39° 40'

Long 80° 10'



0.82 S
0.63 W

SEP - 1 1946

0.65 W
0.82 S

ABANDONMENT X

COMPANY DUNN MAR OIL AND GAS CO.
 ADDRESS WASHINGTON, PA.
 FARM JOSEPH VARNER HEIRS
 TRACT ONE ACRES 136 LEASE NO.
 WELL (FARM) NO. 9 SERIAL NO. _____
 ELEVATION (S.L.) 1105'
 QUADRANGLE BLACKVILLE **WC**
 COUNTY MONONGALIA DIST. CLAY
 ENGINEER A. L. HEADLEY
 ENGINEER'S REG. NO. _____
 FILE NO. _____ DRAWING NO. _____
 DATE 6/25/46 SCALE 1" = 40 POLES

STATE OF WEST VIRGINIA
 DEPARTMENT OF MINES
 OIL AND GAS DIVISION
 CHAPLESTON
 WELL LOCATION MAP
 FILE NO. MON 332-A

T DENOTES LOCATION OF WELL ON U.S. TOPOGRAPHIC MAPS, SCALE 1 TO 62,500, LATITUDE AND LONGITUDE LINES BEING REPRESENTED BY BORDER LINES AS SHOWN
 - DENOTES ONE INCH SPACES ON BORDER LINE OF ORIGINAL TRACING.



396

STATE OF WEST VIRGINIA
DEPARTMENT OF MINES
OIL AND GAS DIVISION

WELL RECORD

Permit No. MON-332

Oil or Gas Well _____
(KIND)

Company Dunn-Mar Oil and Gas Company
Address Washington, Pa.
Farm Joseph Varner Heirs Acres 136
Location (waters) _____
Well No. 9 Elev. 1105'
District Clay County Monongalia
The surface of tract is owned in fee by _____
Address _____
Mineral rights are owned by _____
Address _____
Drilling commenced _____
Drilling completed December 9, 1925
Date Shot From _____ To _____
With _____
Open Flow /10ths Water in _____ Inch
/10ths Merc. in _____ Inch
Volume _____ Cu. Ft.
Rock Pressure _____ lbs. _____ hrs.
Oil _____ bbls., 1st 24 hrs.
Fresh water _____ feet _____ feet
Salt water _____ feet _____ feet

Casing and Tubing	Used in Drilling	Left in Well	Packers
Size			Kind of Packer
16			
13			
10			Size of
8 1/4	840		
6 5/8			Depth set
5 3/16	1605		
3			Perf. top
2 I.D. tubing	3030		Perf. bottom
Liners Used			Perf. top
			Perf. bottom

CASING CEMENTED _____ SIZE _____ No. Ft. _____ Date _____

COAL WAS ENCOUNTERED AT _____ FEET _____ INCHES
_____ FEET _____ INCHES _____ FEET _____ INCHES
_____ FEET _____ INCHES _____ FEET _____ INCHES

Formation	Color	Hard or Soft	Top	Bottom	Oil, Gas or Water	Depth Found	Remarks
Pittsburgh coal			580				
First pay			1988				
Second pay			2038				
Big Injun			2058				
Squaw			2100	2170			
Sand			2360	2380			
Gantz			2452	2485			
50 ft. sand			2503	2550			
30 ft. sand			2562	2610			
Stray			2710	2720			
Gordon			2788	2803			
4th sand			2816	2820			
Sand			2845	2880			
5th sand			2980	3000			
Gas			2982	2989			
Shell			3015	3018			
Total depth				3031			

Oil

WELL RECORD 61-30332

J.H. McDermott Oil

COMPANY

Record of Well No. 9 on Jos. Varner Heirs Farm 127 Acres
Jakes Run Field Clay District Monongalia County W. Va. State
 Rig Commenced 19 Completed 19
 Drilling Commenced 19 Completed 19
 Cost Per Foot Contractor Address
 Drillers Names

CONDUCTOR AND CASING USED IN DRILLING

Conductor 13 inch 10 inch 8 1-4 inch 6 5-8 inch 5 3-16 inch 4 inch 3 inch 2 inch

CONDUCTOR AND CASING LEFT IN WELL

Conductor 13 inch 10 inch 8 3-4 inch 6 5-8 inch 5 3-16 inch 4 inch 3 inch 2 inch

Formation	Top	Bottom	Thickness	840 liner		Full string		Thickness	1982
				Formation	Top	Bottom	Thickness		
GRAVEL OR QUICK SAND				FORMATION					
FIRST WATER				SQUAW					
BLUFF SAND				BEREA					
NATIVE COAL				GANTZ					
WBG. COAL				FIFTY FOOT					
MAPEL COAL				THIRTY FOOT					
PGH. COAL	580			GORDON STRAY					
MURPHY SAND				GORDON					
LITTLE DKRD.				FOURTH					
BIG DKRD.				FIFTH					
GAS SAND				BAYARD					
FIRST SALT SAND				ELIZABETH					
SECOND SALT SAND				TOTAL DEPTH	2008				
LITTLE LIME									
PENCIL CAVE									
BIG LIME									
BIG INJUN	1988								
Oil									

Gas Test Open
Minute Test

Oil Production 20 bbls. Daily
 Well Tubed with 1982 Tubing Packer Set in 6 Ft. working bbl. 10 Sand, Top of Packer, Anchor, Perforation at, 2004 Perforation Air Hole 1900

SHOT RECORD

Date	Amount	Size of Shell	Top	Bottom	Oil on Shot	Results
No date	20 qts.					
June 1 1900	40 "	4 10 qt. shells	1907			
July 17 1917	50 "	1 " " 2 20 "	1988	1995		1 to 2 bbls.

REMARKS: