

Latitude

1.06s
.52w

Longitude

Topo Location

7.5' Loc. _____ 15' Loc. _____
(calc.) _____

Company Dunn Mas O+G

Farm Joseph Varner Hrs #17

15' Quad _____
(sec.)

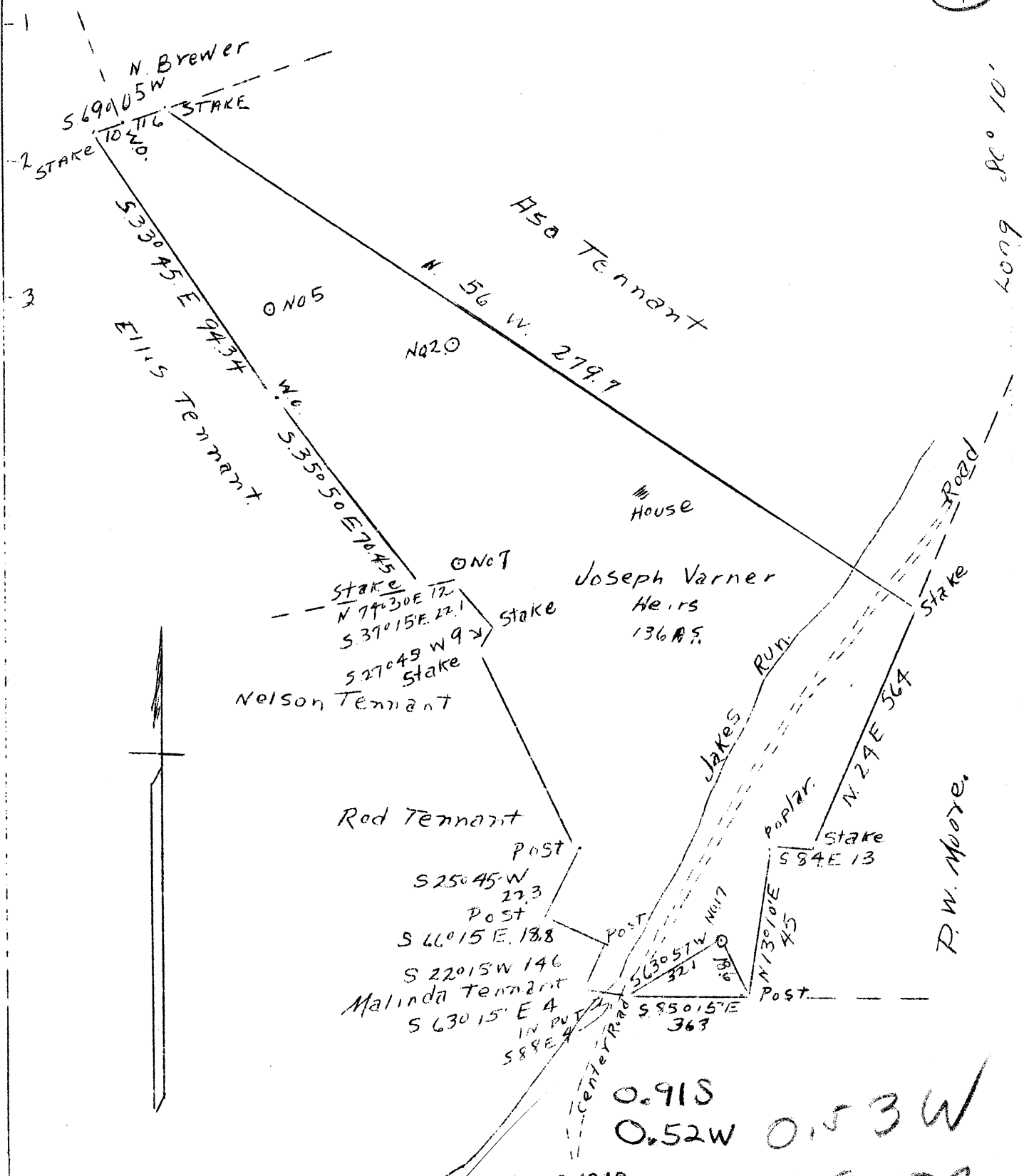
7.5' Quad Blackselle

District Clay

WELL LOCATION PLAT

County 061 **Permit** 30330

LAT. 39° 40'



ABANDONMENT X

AUG 6 1946

0.91S
 0.52W 0.53W
 0.92W

COMPANY	DUNN-MAR OIL AND GAS CO.
ADDRESS	WAYNEBURG, PA.
FARM	JOSEPH VARNER HEIRS
TRACT	ONE ACRES 136 LEASE NO.
WELL (FARM) NO.	17 SERIAL NO.
ELEVATION (SPIRIT LEVEL)	1063'
QUADRANGLE	BLACKSVILLE
COUNTY	MONONGALIA DISTRICT CLAY
ENGINEER	A. L. HEADLEY
ENGINEER'S REGI. NO.	
FILE NO.	DRAWING NO.
DATE	6/25/46 SCALE 1" - 40 POLES

STATE OF WEST VIRGINIA
 DEPARTMENT OF MINES
 OIL AND GAS DIVISION
 CHARLESTON

WELL LOCATION MAP
 FILE NO. MON-330 A

WC + DENOTES LOCATION OF WELL ON U.S. TOPOGRAPHIC MAPS, SCALE 1 TO 62,500 LATITUDE AND LONGITUDE LINES BEING REPRESENTED BY BORDER LINES AS SHOWN.

- DENOTES ONE INCH SPACES ON BORDER LINE OF ORIGINAL TRACING.

JOSEPH VARNER HRS. NO. 17 - DUNN-MAR OIL & GAS CO. - MON-330-A

JOSEPH VARNER HEINS NO. 17 WELL.

330A

Clay District, Monongalia County, W. Va.
 By Dunn-Mar Oil & Gas Co., Waynesburg, Pa.
 Abandoned under permit Mon-330-A.
 On 136 acres, on Jakes Run.
 Elevation, 1063' L.
 6 1/2" casing, 1550'; 5" casing, 1870'; 2" tubing, 3031'.
 Coal was encountered at 538-544'.
 Gas well. Record to Dept. of Mines not dated or stamped.
 Record to ROT from Mrs. Griffith September 11, 1946. Old File No. 387.

	Top.	Bottom.
Pittsburgh Coal	538	544
Big Injun Sand (gas, 1960')	1870	2039
Squaw Sand	2089	2155
Sand	2230	2250
Sand	2250	2300
Gantz Sand	2325	2348
50-Ft. Sand	2425	2460
30-Ft. Sand (show gas, 2540')	2473	2540
Sand	2560	2582
Sand	2605	2672
Gordon Stray Sand	2665	2685
Sand	2700	2712
Sand	2725	2730
Gordon Sand	2750	2760
Sand	2833	2847
Sand	2870	2878
5th Sand (gas at 2948, 2955, and 2960')	2946	2967
Sand	2986	2993
Total depth		3041

ume
ck

Sand



387

STATE OF WEST VIRGINIA
DEPARTMENT OF MINES
OIL AND GAS DIVISION

WELL RECORD

Permit No. 390-A

Oil or Gas Well _____
(KIND)

Company Dunn Mar Oil and Gas Company
Address Waynesburg, Pennsylvania
Farm Joseph Varner Heirs Acres 136
Location (waters) Jakes Run
Well No. 17 Elev. 1063'
District Clay County Monongalia
The surface of tract is owned in fee by _____
Address _____
Mineral rights are owned by _____
Address _____
Drilling commenced _____
Drilling completed _____
Date Shot _____ From _____ To _____
With _____
Open Flow _____ /10ths Water in _____ Inch
_____ /10ths Merc. in _____ Inch
Volume _____ Cu. Ft.
Rock Pressure _____ lbs _____ hrs.
Oil _____ bbls., 1st 24 hrs.
Fresh water _____ feet _____ feet
Salt water _____ feet _____ feet

Casing and Tubing	Used in Drilling	Left in Well	Packers
Size			
16			Kind of Packer
13			
10			Size of
8 1/4			
6 3/4		1550	Depth set
5 3/16		1870	
3			Perf. top
2		✓ 3031	Perf. bottom
Liners Used			Perf. top
			Perf. bottom

CASING CEMENTED _____ SIZE _____ No. Ft. _____ Date _____

COAL WAS ENCOUNTERED AT 538 FEET 72 INCHES
_____ FEET _____ INCHES _____ FEET _____ INCHES
_____ FEET _____ INCHES _____ FEET _____ INCHES

Formation	Color	Hard or Soft	Top	Bottom	Oil, Gas or Water	Depth Found	Remarks
Pittsburgh	Coal		538		544		
Big Injun	Sand		1870		2039		
Gas at			1960				
Squaw Sand			2089		2155		
Sand			2230		2250		
Sand			2280		2300		
Gantz			2325		2348		
50 Ft. Sand			2425		2460		
30-Ft. Sand			2473		2540		
Show Gas			2540				
Sand			2560		2582		
Sand			2605		2672		
Gordon Stray			2665		2685		
Sand			2700		2712		
Sand			2725		2730		
Gordon Sand			2750		2760		
Sand			2833		2847		
Sand			2870		2878		
5th Sand			2946		2967		
Gas at		2948' 2955' and 2960'					
Sand			2985		2993		
Total Depth					3041		

Oil

WELL RECORD 61-30330

COMPANY

Record of Well No. 17 on J.H. McDermott Oil Farm 127 Acres _____
Jakes Run Field Jos. Varner Heirs District Monongalia County W.V. State _____
 Rig Commenced Sept. 4th. 1989 Completed Sept. 12th. 1989
 Drilling Commenced Oct. 20th. 1989 Completed Dec. 4th. 1989
 Cost Per Foot _____ Contractor Myers & Michael Address _____
 Drillers Names _____

CONDUCTOR AND CASING USED IN DRILLING

Conductor 13 inch 10 inch 8 1-4 inch 6 5-8 inch 5 3-16 inch 4 inch 3 inch 2 inch

CONDUCTOR AND CASING LEFT IN WELL

Conductor 13 inch 10 inch 8 3-4 inch 6 5-8 inch 5 3-16 inch 4 inch 3 inch 2 inch

Formation	Top	Bottom	Thickness	Formation	Top	Bottom	Thickness
GRAVEL OR				FORMATION			
QUICK SAND				SQUAW			
FIRST WATER				BEREA			
BLUFF SAND				GANTZ			
NATIVE COAL				FIFTY FOOT			
WBG. COAL				THIRTY FOOT			
MAPEL COAL				GORDON STRAY			
PGE. COAL	<u>538</u>			GORDON			
MURPHY SAND				FOURTH			
LITTLE DKRD.				FIFTH			
BIG DKRD.				BAYARD			
GAS SAND				ELIZABETH			
FIRST SALT SAND							
SECOND SALT SAND							
LITTLE LIME							
PENCIL CAVE							
BIG LIME							
BIG INJUN	<u>1870</u>						
<u>Oil</u>	<u>1960</u>						
				TOTAL DEPTH	<u>1980</u>		

Gas Test Open _____
 Minute Test _____
 Oil Production 10 bbls. Daily
 Well Tubed with 1954 Tubing Packer Set in _____ Sand, Top of Packer, _____ Perforation
 Well Tubed with _____ Tubing 6 Ft. working bbl. 20 Anchor, Perforation at, _____ Air Hole 1966 1960

SHOT RECORD

Date	Amount	Size of Shell	Top	Bottom	Oil on Shot	Results
June 16th 1900	10 qts.	7 ft.	1959	1966		17 1/2 bbls.
Aug. 2nd. 1901	25 "	9 1/2 "	1959	1968 1/2		10 "
July 8th. 1902	30 "	11 "	1950	1961		6 1/2 "
Mch. 30 " 1903	40 "	1 10 1/2 "	1957	1960		5 "
Oct. 22nd. 1903	50 "	1 " 1 7 1/2 t.	1960	1970		

REMARKS: