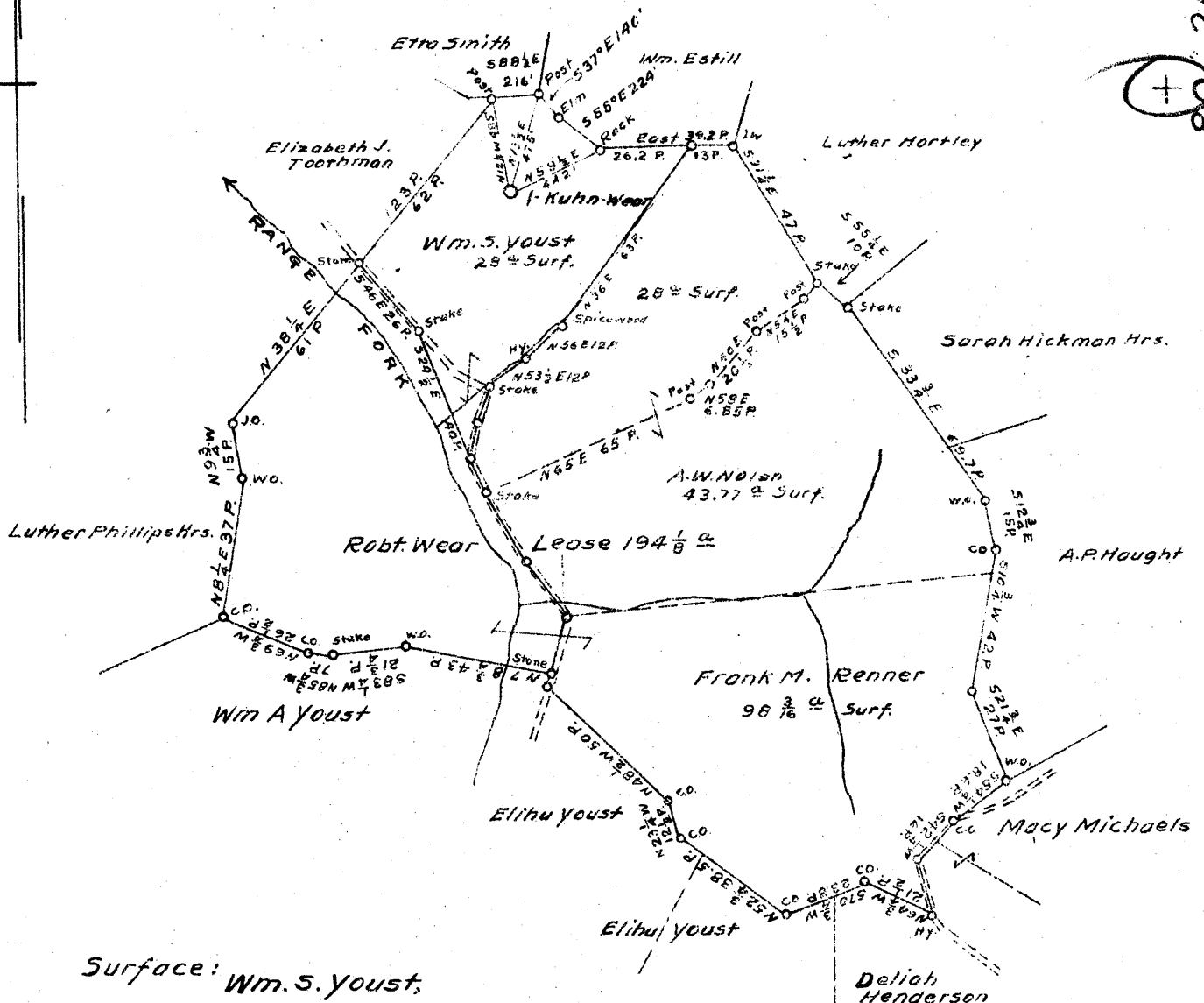


Latitude 39 40

Longitude 80 20



Surface: Wm. S. Youst,  
307 University Ave.,  
Morgantown, W. Va.

Coal: State of West Va.

NOV 28 1944

2.135  
0.37W

0.39 W  
2.18

MAP N71E S95. N13E 16

New Location   
Drill Deeper   
Abandonment

Company South Penn Nat. Gas Co.  
Address Parkersburg W. Va.  
Farm Kuhn-Wear  
Tract \_\_\_\_\_ Acres 200 Lease No. 15911  
Well (Farm) No. 1 Serial No. \_\_\_\_\_  
Elevation (Spirit Level) Ground 1410.20  
Quadrangle Mannington  
County Monongalia District Battelle  
Engineer E.C. Tabler  
Engineer's Registration No. \_\_\_\_\_  
File No. \_\_\_\_\_ Drawing No. \_\_\_\_\_  
Date 11-6-44 Scale 1"=800'

STATE OF WEST VIRGINIA  
DEPARTMENT OF MINES  
OIL AND GAS DIVISION  
CHARLESTON

WELL LOCATION MAP  
FILE NO. Mon-312-A

+ Denotes location of well on United States Topographic Maps, scale 1 to 62,500, latitude and longitude lines being represented by border lines as shown.

- Denotes one inch spaces on border line of original tracing.



STATE OF WEST VIRGINIA  
DEPARTMENT OF MINES  
OIL AND GAS DIVISION

36 ✓

Permit No. 312-A

WELL RECORD

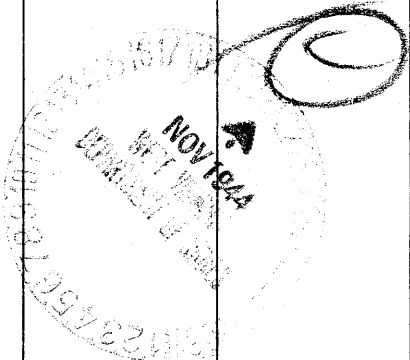
Oil or Gas Well \_\_\_\_\_ (KIND)

Company South Penn Natural Gas Company  
 Address Union Trust Bldg. Parkersburg, W. Va.  
 Farm Kuhn-Wear Acres 200  
 Location (waters) Dunkard Creek  
 Well No. 1 Elev. 1410.20  
 District Battelle County Monongalia  
 The surface of tract is owned in fee by Wm. S. Youst  
307 University Ave. Address Morgantown, W. Va.  
 Mineral rights are owned by Mary Wear et al  
 Address Belmont, Ohio  
 Drilling commenced Feb. 13, 1907  
 Drilling completed Oct. 7, 1907  
 Date Shot 10-12-07 - 10 Qts. To --  
12-15-16 - 12 Qts.  
 With \_\_\_\_\_  
 Open Flow /10ths Water in --- Inch  
 /10ths Merc. in --- Inch  
 Volume \_\_\_\_\_ Cu. Ft.  
 Rock Pressure --- lbs. --- hrs.  
 Oil 25 bbls., 1st 24 hrs.  
 Fresh water -- feet -- feet  
 Salt water 2159 feet 2606 feet

Casing and Tubing	Used in Drilling	Left in Well	Packers
Size			
16.			Kind of Packer -
13.			-
10.	297' 6"	297' 6"	Size of -
8 1/4.	1738'	1738'	-
6 5/8.	2198'	2198'	Depth set -
5 3/16.	2600'	2630'	-
3.			Perf. top -
2.			Perf. bottom -
Liners Used	4 1/2" X 4 235'		Perf. top -
Cond.	15'		Perf. bottom -

CASING CEMENTED - SIZE - No. Ft. - Date  
 - - - - -  
 Mapletown  
 COAL WAS ENCOUNTERED AT 1120 FEET - INCHES  
 Pgh. 1224 FEET 120 INCHES - FEET - INCHES  
 - FEET - INCHES - FEET - INCHES

Formation	Color	Hard or Soft	Top	Bottom	Oil, Gas or Water	Depth Found	Remarks
Mapletown Coal			1120	1127 (W.O.)			
Pittsburgh Coal			1224	1234			
Big Dunkard			1722	1850			
Gas Sand			1913	1978			
Salt Sand			2124	2230			
					Water	2159	
Little Lime			2430	2448			
Pencil Cave			2448	2454			
Big Lime			2454	2524			
Big Injun Sand			2524	2719			
					Water	2606	
50 Foot Sand			3140	3210			
Campbells Run Sand			3392	3433			
4th Sand			3483				
					1st Pay	3488	
					2nd Pay	3493	
Total Depth				3508			



Formation	Color	Hard or Soft	Top	Bottom	Oil, Gas or Water	Depth Found	Remarks

Date November 20, 1944.

194

**SOUTH PENN NATURAL GAS COMPANY,**

APPROVED \_\_\_\_\_, Owner

By Elton Sperry Land Agent.

(Title)

