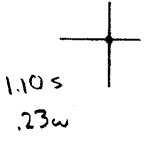


Latitude



Longitude

Topo Location

7.5' Loc. _____ 15' Loc. _____
 _____ (calc.) _____

Company Washington O Co

Farm JW Mayland Nos #3

15' Quad _____
(sec.)

7.5' Quad Osage

District Clay

WELL LOCATION PLAT

County 061 Permit 30298

0 1 2 3

Latitude 39° 45'

Longitude 80° 05'

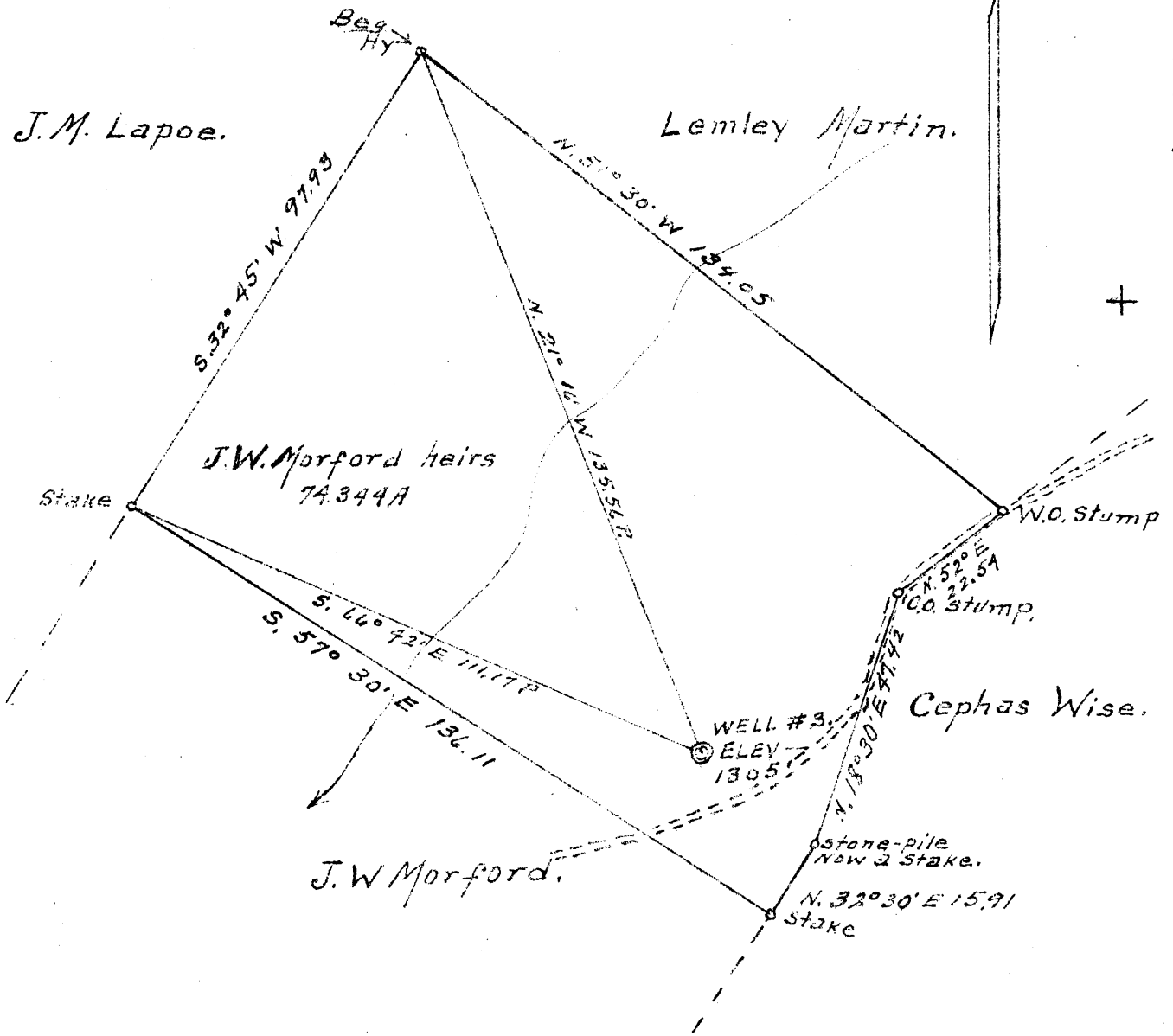
4673
N 43 W

N.

1

2

3



- New Location
- Drill Deeper
- Abandonment

Company Washington Oil Co.
 Address Core, W. Va.
 Farm J. W. Morford heirs
 Tract _____ Acres 74+ Lease No. _____
 Well (Farm) No. 3 Serial No. _____
 Elevation (Spirit Level) 1305'
 Quadrangle Blacksville
 County Monongalia District Clay
 Engineer A. L. Headley
 Engineer's Registration No. _____
 File No. _____ Drawing No. _____
 Date 4-13-14 Scale 1" = 500'

STATE OF WEST VIRGINIA
 DEPARTMENT OF MINES
 OIL AND GAS DIVISION
 CHARLESTON

WELL LOCATION MAP
 FILE NO. Mon-298-A

+ Denotes location of well on United States Topographic Maps, scale 1 to 62,500, latitude and longitude lines being represented by border lines as shown.

- Denotes one inch spaces on border line of original tracing.