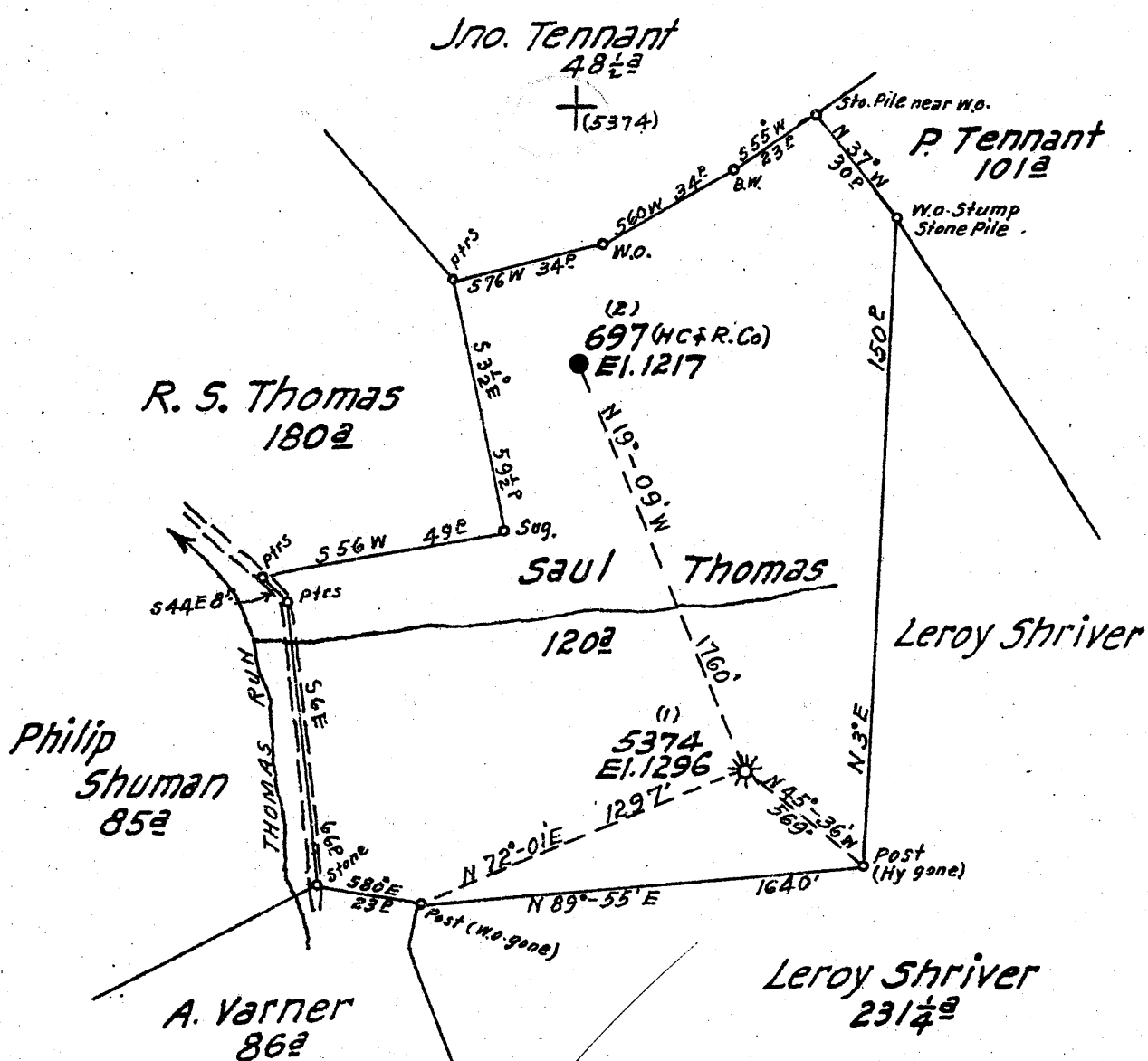




3.145  
3.091



New Location   
 Drill Deeper   
 Abandonment  (5374)

JUN - 1 1942

Map Sheet 17-Square N17E22 - F.B. 722 P.A.

Company Hope Natural Gas Co.  
 Address Clarksburg, W. Va.  
 Farm Saul Thomas  
 Tract Acres 120 Lease No. 34422  
 Well (Farm) No. 1 Serial No. 5374  
 Elevation (Spirit Level) 1296  
 Quadrangle Blacksville  
 County Monongalia District Clay  
 Engineer W. M. Bewers  
 Engineer's Registration No. 900  
 File No. \_\_\_\_\_ Drawing No. \_\_\_\_\_  
 Date May 13, 1942 Scale 1" = 40<sup>00</sup>'

STATE OF WEST VIRGINIA  
 DEPARTMENT OF MINES  
 OIL AND GAS DIVISION  
 CHARLESTON

WELL LOCATION MAP  
 FILE NO. MON-273-A

+ Denotes location of well on United States Topographic Maps, scale 1 to 62,500, latitude and longitude lines being represented by border lines as shown.

- Denotes one inch spaces on border line of original tracing.

STATE OF WEST VIRGINIA  
DEPARTMENT OF MINES  
OIL AND GAS DIVISION

328

WELL RECORD

Permit No. MON-273-A

Oil or Gas Well Gas  
(KIND)

Company Hope Natural Gas Company  
Address Clarksburg, W. Va.  
Farm Saul Thomas Acres \_\_\_\_\_  
Location (waters) \_\_\_\_\_  
Well No. 5374 Elev. \_\_\_\_\_  
District Clay County Monongalia  
The surface of tract is owned in fee by \_\_\_\_\_  
Address \_\_\_\_\_  
Mineral rights are owned by \_\_\_\_\_  
Address \_\_\_\_\_  
Drilling commenced 11-21-18  
Drilling completed 2-14-1919  
Date Shot 12-15-31 From 2916 To 2926  
With 20 quarts  
Open Flow /10ths Water in \_\_\_\_\_ Inch  
/10ths Merc. in \_\_\_\_\_ Inch  
Volume \_\_\_\_\_ Cu. Ft.  
Rock Pressure \_\_\_\_\_ lbs. \_\_\_\_\_ hrs.  
Oil \_\_\_\_\_ bbls., 1st 24 hrs.  
Fresh water None recorded feet \_\_\_\_\_ feet  
Salt water 1800-1840 feet \_\_\_\_\_ feet

Casing and Tubing	Used in Drilling	Left in Well	Packers
Size			Kind of Packer
16			
13			
10	975	975	Size of
8 1/4	1731	1731	
6 5/8	2199	2199	Depth set
5 3/16	3007	3007	
3			Perf. top
2			Perf. bottom
Liners Used			Perf. top
			Perf. bottom

CASING CEMENTED \_\_\_\_\_ SIZE \_\_\_\_\_ No. Ft. \_\_\_\_\_ Date \_\_\_\_\_  
Not cemented  
COAL WAS ENCOUNTERED AT 610 FEET 36 INCHES  
967 FEET 72 INCHES FEET INCHES  
FEET INCHES FEET INCHES

Formation	Color	Hard or Soft	Top	Bottom	Oil, Gas or Water	Depth Found	Remarks
Native Coal			610	613			
Pittsburgh Coal			967	973			
Little Dunkard Sand			1347	1367			
Big Dunkard Sand			None				
Gas Sand			Line				
First Salt Sand			1726	1800			
Second Salt Sand			1845	?	Water	1800-1840	
Little Line			2160	2170			
Pencil Cave			2170	2175			
Big Line			2175	2242			
Big Injun Sand			2242	2467	Oil	2365	
Gantz Sand			2749	2777	Gas	2259-2276	
Fifty Foot Sand			2898	2961	Gas	2921	
Total Depth				3007			

