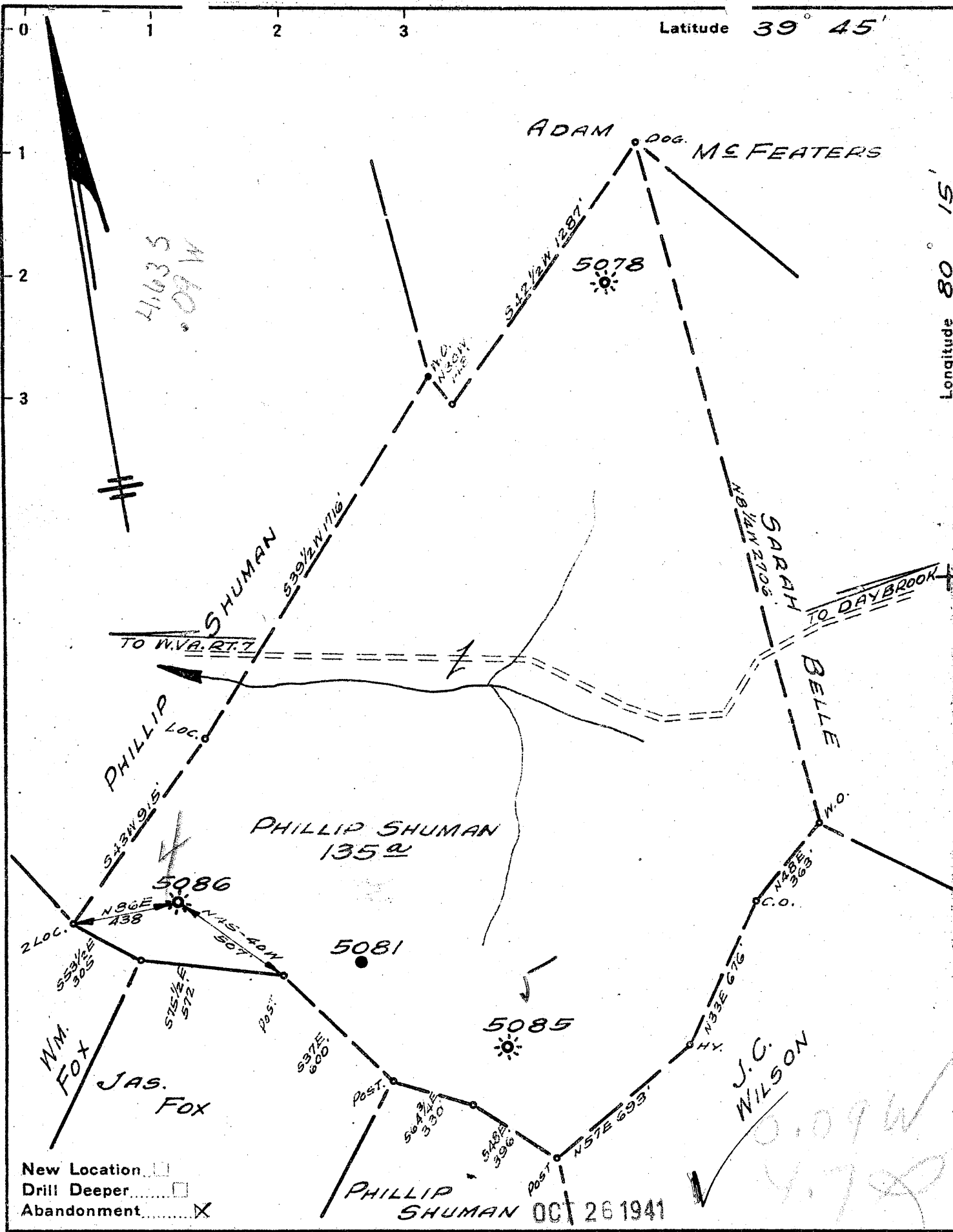


Latitude 39° 45'

Longitude 80° 15'



- New Location
- Drill Deeper
- Abandonment

Company PITTSBURGH & W.V.A. GAS
 Address CLARKSBURG, W.V.A.
 Farm PHILLIP SHUMAN
 Tract _____ Acres 140 Lease No. 10351
 Well (Farm) No. FOUR Serial No. 5086
 Elevation (Spirit Level) 1364' L
 Quadrangle MANNINGTON N.E. 42
 County MONONGALIA District BATELLE
 Engineer Paul W. Cunningham
 Engineer's Registration No. _____
 File No. V-99-P-123 Drawing No. _____
 Date SEPT. 8, 1941 Scale 1"=500'

STATE OF WEST VIRGINIA
 DEPARTMENT OF MINES
 OIL AND GAS DIVISION
 CHARLESTON

WELL LOCATION MAP
 FILE NO. MON-270A

☼ Denotes location of well on United States Topographic Maps, scale 1 to 62,500, latitude and longitude lines being represented by border lines as shown.

— Denotes one inch spaces on border line of original tracing.

PHILLIP SHUMAN No. 4 (5086) - P.G.H. & W.V.A. GAS CO. - MON-270

STATE OF WEST VIRGINIA
DEPARTMENT OF MINES
OIL AND GAS DIVISION

WELL RECORD

Permit No. **Ab 270-A**

Oil or Gas Well **Gas**
(KIND)

373

Company **Pittsburgh & West Va. Gas Company.**
 Address **Clarksburg, West Va.,**
 Farm **Philip Shuman** Acres **140**
 Location (waters) **North, N/2, 4-2**
 Well No. **5096** Elev. **1964'**
 District **Rattelle** County **Monongalia**
 The surface of tract is owned in fee by **Albert Shuman**
 Address **Morgantown, W.Va.,**
 Mineral rights are owned by **Albert Shuman and Mary A. Lenoxy, 174 Chancery**
 Address **Morgantown, W.Va.,**
 Drilling commenced **April 20, 1914.**
 Drilling completed **August 2, 1914.**
 Date shot _____ Depth of shot _____
 Open Flow /10ths Water in _____ Inch
 /10ths Merc. in _____ Inch
 Volume _____ Cu. Ft.
 Rock Pressure _____ lbs. _____ hrs.
 Oil _____ bbls., 1st 24 hrs.
 Fresh water _____ feet _____ feet
 Salt water _____ feet _____ feet

Casing and Tubing	Used in Drilling	Left in Well	Packers
Size			
16			Kind of Packer
13			Rock Wall
10	1195'	1195'	Size of 2-3/16" x 2"
8 1/4	1507'	1507'	Depth set 2956'
6 5/8	2268'	2268'	
5 3/16	2913'	2913'	
3			Perf. top _____
2	2978'	2978'	Perf. bottom _____
Liners Used			Perf. top _____
			Perf. bottom _____

CASING CEMENTED _____ SIZE _____ No. Ft. _____ Date _____
 COAL WAS ENCOUNTERED AT **676** FEET **40** INCHES
924 FEET **40** INCHES **1025** FEET **40** INCHES
 _____ FEET _____ INCHES _____ FEET _____ INCHES

Formation	Color	Hard or Soft	Top	Bottom	Oil, Gas or Water	Depth Found	Remarks
Un-recorded Bluff Sand	White	Hard	0	621			
Un-recorded Fairview Coal	Dark	Soft	621	648			
Un-recorded Sand	White	Hard	648	676			
H.T. Coal			676	678			
Un-recorded Sand	White	Hard	678	775			
H.T. Coal			775	795			
Un-recorded Pgh. Coal			924	928			
Un-recorded Murphy Sand	Brown	Hard	928	1025			
Un-recorded Little Dunkard	White	Hard	1025	1032	Water	?	
Un-recorded Big Dunkard	White	Hard	1032	1185			
Slate			1185	1208			
Un-recorded 1st. Salt Sand			1208	1205			
Un-recorded 2nd. Salt Sand			1205	1254			
Slate	Black		1254	1922			
Sand	"		1922	2020			
Un-recorded Little Line			2020	2024			
Pencil Cove			2024	2040			
Big Line			2040	2234			
Big Injun		Hard	2234	2244			
Un-recorded Squaw Sand	Gray	Hard	2244	2248	Sh. Gas	2332'	
Un-recorded Sand	White	Hard	2248	2311	Sh. Oil	2414-18'	
Un-recorded Ganta Sand	White	Hard	2311	2510			
Un-recorded Fifty Foot Sand		Hard	2510	2569			
Un-recorded Thirty Foot Sand		Hard	2569	2605			
Un-recorded Sand	Gray	Hard	2605	2605			
Un-recorded Sand	White	Hard	2605	2823			
Un-recorded Sand	White	Hard	2823	2864			
Un-recorded Sand	White	Hard	2864	2900			
Un-recorded Sand		Hard	2900	2909			
Un-recorded Sand		Hard	2909	2923			
Un-recorded Sand		Hard	2923	2948			
Un-recorded Sand		Hard	2948	3006	Gas	2965-2976'	
Un-recorded Sand	Gray	Hard	3006	3015			
Un-recorded Sand	Black	"	3015	3032			
Un-recorded Sand	"	"	3032	3035			
Un-recorded Sand	"	"	3035	3050			



Formation	Color	Hard or Soft	Top	Bottom	Oil, Gas or Water	Depth Found	Remarks
Un-recorded Sand Shell	Dark		3050	3062			
" "			3062	3065	Sh. Oil	3064'	
" "			3065	3069			
Un-recorded Sand			3069	3076			
Sand			3076	3082			
Sand			3083	3090			
Sand			3092	3100			
Un-recorded Red Rock			3100	3110			
Sand Shells			3110	3114			
Un-recorded Red Rock			3114	3117			
Un-recorded Red Rock			3117	3120			
Un-recorded Sand			3120	3126			
Un-recorded Sand			3126	3135			
Un-recorded Sand			3135	3150			
Un-recorded Sand			3150	3157			
Un-recorded Sand			3157	3164			
Un-recorded Sand			3164	3173			
Un-recorded Sand			3173	3183			
Un-recorded Red Rock			3183	3210			
Sand			3210	3219			
Un-recorded Sand			3219	3231			
Un-recorded Sand			3231	3263	Gas	3270'	
Un-recorded Sand			3263	3283			
Un-recorded Sand			3283	3304			
Total Depth				3304'			

September 2, 1941.

MEET RECORD

Date....., 194.....

PITTSBURGH & WEST VA GAS COMPANY.

APPROVED.....

Owner

DEPARTMENT OF MINES

By.....

(Title)

J. E. Brisson

Record of Well No. 5086

Located on Phillip Shumetter Farm Jan 15

Battelle

District Monongalia

County W. Va.

Division O

District No. 11

Drilled under Well Order 783

Rig built by John Craig

Began Mar 11 1914 Completed Mar 21 1914

Well drilled by Atkins Bros.

Began April 30 1914 Completed Aug 2 1914

Depth of Well 3304 feet
Elev: 1364

Size of Hole 5 7/16 Producing Gas.

CASED WITH

REMARKS

AMOUNT	SIZE	KIND	REMARKS
16'	13"	Wood	
1199'	10"	Old	
1528'	8 1/4"	"	Could not pull, parted 2 of screws track on then
2277'	6 3/8"	New	1-6 5/8 casing shoe
2926'	5 7/16"	"	1-5 7/16
3308'	5"	Reclaimed	
2978'	2"		

COAL VEINS Fairview 674 Mabletown 928

FORMATIONS

NAME	TOP	BOTTOM	OIL	GAS	WATER	REMARKS
Bluff sand	621	648				2 strain tools left in hole
Mudstone	1185	1208				1st reported 100 ft
Little Shinarump	1405	1440				5' Carb. socket and 50 ft. in
Big	1503	1570				
1st salt sand	1718	1754				
2nd "	1917	2022				
Little Linn	2022	2079				
Big Linn	2079	2211				
" Snyburn	2211	2249				
Snyburn	2249	2332				
Snyburn	2332	2371				
Snyburn	2371	2419				
Snyburn	2419	2499				
Snyburn	2499	2579				
Snyburn	2579	2662				
Snyburn	2662	2745				
Snyburn	2745	2828				
Snyburn	2828	2911				
Snyburn	2911	2994				
Snyburn	2994	3077				
Snyburn	3077	3160				
Snyburn	3160	3243				
Snyburn	3243	3326				
Snyburn	3326	3409				
Snyburn	3409	3492				
Snyburn	3492	3575				
Snyburn	3575	3658				
Snyburn	3658	3741				
Snyburn	3741	3824				
Snyburn	3824	3907				
Snyburn	3907	3990				
Snyburn	3990	4073				
Snyburn	4073	4156				
Snyburn	4156	4239				
Snyburn	4239	4322				
Snyburn	4322	4405				
Snyburn	4405	4488				
Snyburn	4488	4571				
Snyburn	4571	4654				
Snyburn	4654	4737				
Snyburn	4737	4820				
Snyburn	4820	4903				
Snyburn	4903	4986				
Snyburn	4986	5069				
Snyburn	5069	5152				
Snyburn	5152	5235				
Snyburn	5235	5318				
Snyburn	5318	5401				
Snyburn	5401	5484				
Snyburn	5484	5567				
Snyburn	5567	5650				
Snyburn	5650	5733				
Snyburn	5733	5816				
Snyburn	5816	5900				
Snyburn	5900	5983				
Snyburn	5983	6066				
Snyburn	6066	6149				
Snyburn	6149	6232				
Snyburn	6232	6315				
Snyburn	6315	6398				
Snyburn	6398	6481				
Snyburn	6481	6564				
Snyburn	6564	6647				
Snyburn	6647	6730				
Snyburn	6730	6813				
Snyburn	6813	6896				
Snyburn	6896	6979				
Snyburn	6979	7062				
Snyburn	7062	7145				
Snyburn	7145	7228				
Snyburn	7228	7311				
Snyburn	7311	7394				
Snyburn	7394	7477				
Snyburn	7477	7560				
Snyburn	7560	7643				
Snyburn	7643	7726				
Snyburn	7726	7809				
Snyburn	7809	7892				
Snyburn	7892	7975				
Snyburn	7975	8058				
Snyburn	8058	8141				
Snyburn	8141	8224				
Snyburn	8224	8307				
Snyburn	8307	8390				
Snyburn	8390	8473				
Snyburn	8473	8556				
Snyburn	8556	8639				
Snyburn	8639	8722				
Snyburn	8722	8805				
Snyburn	8805	8888				
Snyburn	8888	8971				
Snyburn	8971	9054				
Snyburn	9054	9137				
Snyburn	9137	9220				
Snyburn	9220	9303				
Snyburn	9303	9386				
Snyburn	9386	9469				
Snyburn	9469	9552				
Snyburn	9552	9635				
Snyburn	9635	9718				
Snyburn	9718	9801				
Snyburn	9801	9884				
Snyburn	9884	9967				
Snyburn	9967	10050				
Snyburn	10050	10133				
Snyburn	10133	10216				
Snyburn	10216	10300				
Snyburn	10300	10383				
Snyburn	10383	10466				
Snyburn	10466	10550				
Snyburn	10550	10633				
Snyburn	10633	10716				
Snyburn	10716	10800				
Snyburn	10800	10883				
Snyburn	10883	10966				
Snyburn	10966	11050				
Snyburn	11050	11133				
Snyburn	11133	11216				
Snyburn	11216	11300				
Snyburn	11300	11383				
Snyburn	11383	11466				
Snyburn	11466	11550				
Snyburn	11550	11633				
Snyburn	11633	11716				
Snyburn	11716	11800				
Snyburn	11800	11883				
Snyburn	11883	11966				
Snyburn	11966	12050				
Snyburn	12050	12133				
Snyburn	12133	12216				
Snyburn	12216	12300				
Snyburn	12300	12383				
Snyburn	12383	12466				
Snyburn	12466	12550				
Snyburn	12550	12633				
Snyburn	12633	12716				
Snyburn	12716	12800				
Snyburn	12800	12883				
Snyburn	12883	12966				
Snyburn	12966	13050				
Snyburn	13050	13133				
Snyburn	13133	13216				
Snyburn	13216	13300				
Snyburn	13300	13383				
Snyburn	13383	13466				
Snyburn	13466	13550				
Snyburn	13550	13633				
Snyburn	13633	13716				
Snyburn	13716	13800				
Snyburn	13800	13883				
Snyburn	13883	13966				
Snyburn	13966	14050				
Snyburn	14050	14133				
Snyburn	14133	14216				
Snyburn	14216	14300				
Snyburn	14300	14383				
Snyburn	14383	14466				
Snyburn	14466	14550				
Snyburn	14550	14633				
Snyburn	14633	14716				
Snyburn	14716	14800				
Snyburn	14800	14883				
Snyburn	14883	14966				
Snyburn	14966	15050				
Snyburn	15050	15133				
Snyburn	15133	15216				
Snyburn	15216	15300				
Snyburn	15300	15383				
Snyburn	15383	15466				
Snyburn	15466	15550				
Snyburn	15550	15633				
Snyburn	15633	15716				
Snyburn	15716	15800				
Snyburn	15800	15883				
Snyburn	15883	15966				
Snyburn	15966	16050				
Snyburn	16050	16133				
Snyburn	16133	16216				
Snyburn	16216	16300				
Snyburn	16300	16383				
Snyburn	16383	16466				
Snyburn	16466	16550				
Snyburn	16550	16633				
Snyburn	16633	16716				
Snyburn	16716	16800				
Snyburn	16800	16883				
Snyburn	16883	16966				
Snyburn	16966	17050				
Snyburn	17050	17133				
Snyburn	17133	17216				
Snyburn	17216	17300				
Snyburn	17300	17383				
Snyburn	17383	17466				
Snyburn	17466	17550				
Snyburn	17550	17633				
Snyburn	17633	17716				
Snyburn	17716	17800				
Snyburn	17800	17883				
Snyburn	17883					

