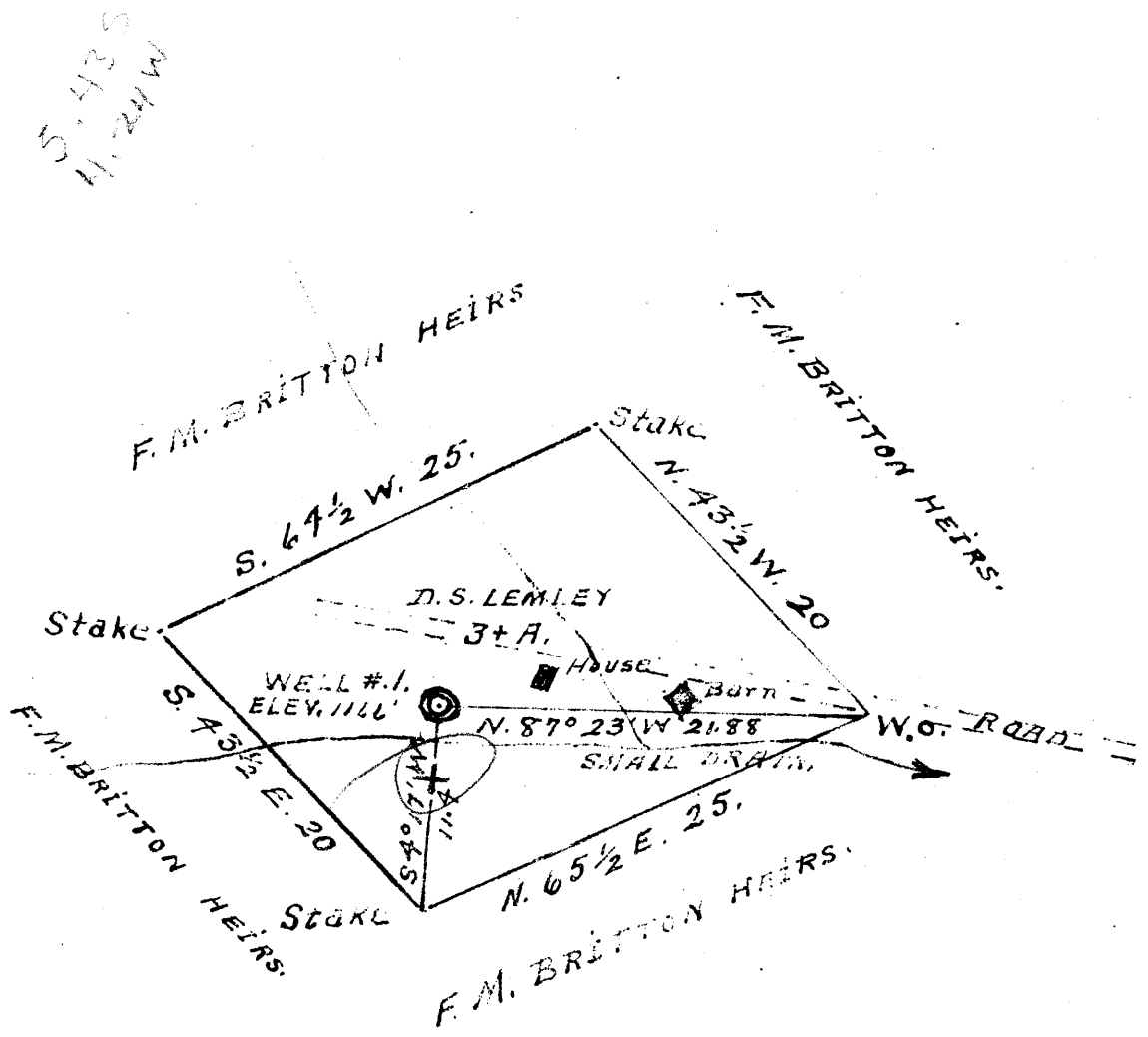


Latitude 39° 45'

Longitude 80° 10'



COAL NOT OPERATED

Handwritten notes:
 4.5
 2nd

New Location
 Drill Deeper
 Abandonment

Company THE CHARTIERS OIL CO.
 Address PITTSBURGH Pa.
 Farm D.S. LEMLEY.
 Tract 1 Acres 3+ Lease No. _____
 Well (Farm) No. 1 Serial No. _____
 Elevation (Spirit Level) 1116'
 Quadrangle BLACKSVILLE
 County MONONGALIA District CLAY
 Engineer A. L. Headley.
 Engineer's Registration No. _____
 File No. _____ Drawing No. _____
 Date 9-26-1941 Scale 1 inch = 10 poles

STATE OF WEST VIRGINIA
 DEPARTMENT OF MINES
 OIL AND GAS DIVISION
 CHARLESTON

WELL LOCATION MAP

FILE NO. MON-269A

159 in Co Rpt
 061-70261

+ Denotes location of well on United States Topographic Maps, scale 1 to 62,500, latitude and longitude lines being represented by border lines as shown.

- Denotes one inch spaces on border line of original tracing.

Clay District, Monongalia County, W. Va.

1.8 mi. N. 80° W. of Daybrook.

Chartiers Oil Co.

Completed, March 10, 1906.

Elevation, 1165' B.

13" casing, 99'; 10", 1156'; 8 1/2", 1748'; 6-5/8", 1872';
5-3/16", 2150'.

Initial production, 25 to 30 bbls. daily.

~~2107 3091~~

MAN-269-A

	Top.	Bottom.
Pittsburgh Coal	856	862
Unrecorded (salt water, 1736-1847'; cave, 1100')	862	2116 1/2
Big Injun Sand (gas, 2122 1/2, 2127 1/2, 2210'; oil, 2223') and unrecorded, to bottom	2116 1/2	2235-3/4

Show of oil and gas, 2223'. Ran one bit one hour and filled up and flowed while pulling tools. Made several small flows during day.

Shot Oct. 1, 1907, with 15 qts. Top of shot, 2222 1/2'.