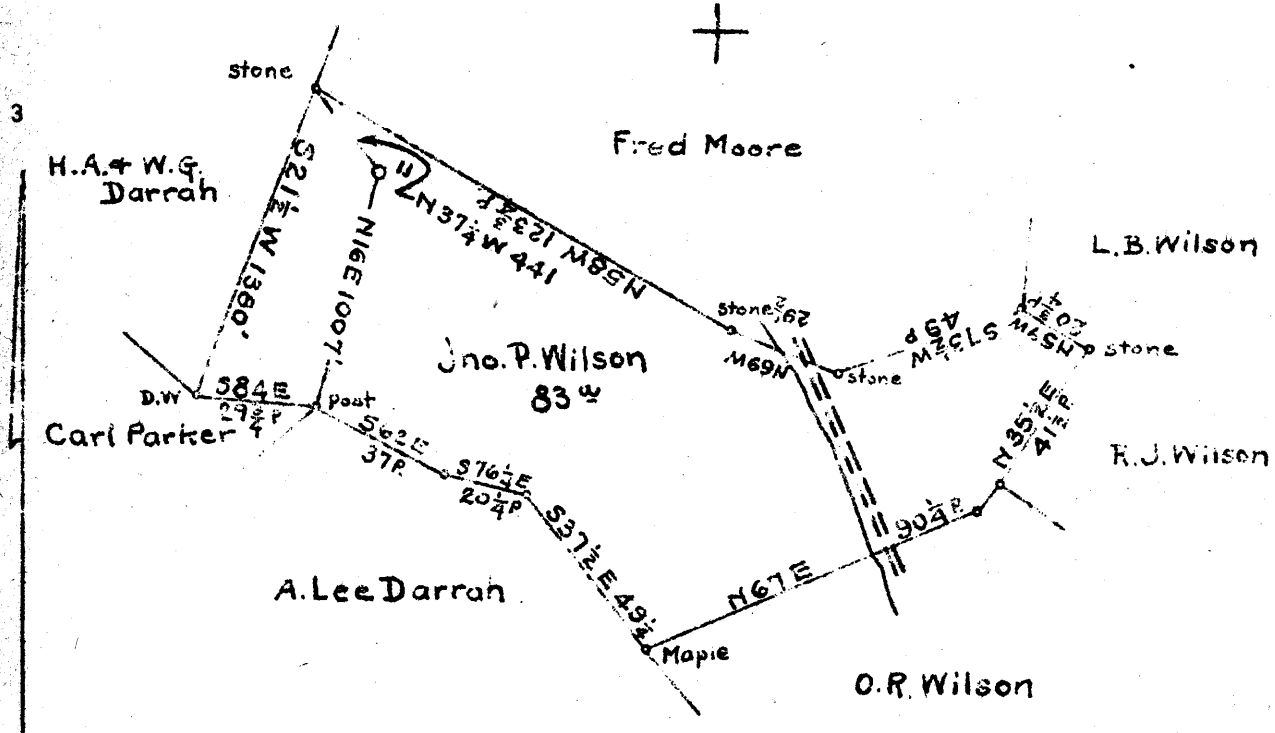


2.73 S
3.72 W

Longitude 80 10'



Coal: Union Trust Co, Trus.
Pittsburgh, Pa.
Surface: Jno. P. Wilson
Fairview, W. Va.

3.8 W
2.76 d

✓ SEP - 3 1940

New Location
Drill Deeper
Abandonment X

Company	South Penn Natural Gas Co.
Address	Parkersburg, W. Va.
Farm	Wilson Heirs
Tract	Acres 161 Lease No. 8468
Well (Farm) No.	11 Serial No.
Elevation (Spirit Level)	1653.36
Quadrangle	Blacksville
County	Monongalia District Clay
Engineer	E.C. Tabler
Engineer's Registration No.	
File No.	Drawing No.
Date	July 23 1940 Scale 1" = 600'

STATE OF WEST VIRGINIA
DEPARTMENT OF MINES
OIL AND GAS DIVISION
CHARLESTON

WELL LOCATION MAP
FILE NO. MON-243A

+ Denotes location of well on United States Topographic Maps, scale 1 to 62,500, latitude and longitude lines being represented by border lines as shown.
- Denotes one inch spaces on border line of original tracing.

STATE OF WEST VIRGINIA
DEPARTMENT OF MINES

OIL AND GAS DIVISION

WELL RECORD

Oil or Gas Well **OIL**
(KIND)

Permit No. **243A**

Company **South Penn Natural Gas Company**
 Address **Union Trust Bldg. Parkersburg, W.Va.**
 Farm **Wilson Heirs** Acres **161**
 Location (waters) **-----**
 Well No. **11** Elev. **1653.86**
 District **Clay** County **Monongalia**
 The surface of tract is owned in fee by **Jno. P. Wilson**
Fairview, W.Va.
 Address **J.P. Wilson et al**
 Mineral rights are owned by **Fairview, W.Va.**
 Address **June 27, 1904**
 Drilling commenced **January 18, 1905**
 Drilling completed
 Date shot **10-8-06 - 20 qt.** Depth of shot **---**
 Open Flow /10ths Water in **---** Inch
 /10ths Merc. in **---** Inch
 Volume **---** Cu. Ft.
 Rock Pressure **---** lbs **---** hrs.
 Oil **12** bbls., 1st 24 hrs.
 Fresh water **69-** feet **---** feet
 Salt water **2144** feet **---** feet

Casing and Tubing	Used in Drilling	Left in Well	Packers
Size			Kind of Packer -
16			
13			
10	1550 (Pulled)		Size of -
8 3/4	2148' (Pulled 1628')		
6 3/8	2340'		Depth set -
5 3/16	2660'		
3			Perf. top -
2			Perf. bottom -
Liners Used 4" X 4 1/2" - 525'			Perf. top -
Cond. 16'			Perf. bottom -

CASING CEMENTED **---** SIZE **---** No. Ft. **---** Date **---**
 COAL WAS ENCOUNTERED AT **1138** FEET **48** INCHES
1228 FEET **96** INCHES **---** FEET **---** INCHES
--- FEET **---** INCHES **---** FEET **---** INCHES

Formation	Color	Hard or Soft	Top	Bottom	Oil, Gas or Water	Depth Found	Remarks
Mapletown Coal			1138	1142			
Pittsburgh Coal			1228	(1236?)			
Big Dunkard Sand			1728	1760			
Gas Sand			1920	1980			
Salt Sand			2138	2230			
Pencil Cave			2452	2458			
Big Lime			2458	2512			
Big Injun Sand			2512	2725			
Fifty Foot Sand			3110	3232	Show Oil	2625	
Gordon Stray Sand			3418	3430	Show Oil	3131	
Gordon Sand			3438	3453			
Shell			3627	3632			
Fifth Sand			3643		Oil	3645	
Total Depth				3658			

