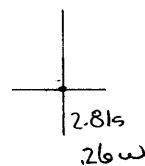


Latitude

Longitude



Topo Location

7.5' Loc. _____ 15' Loc. _____
 _____ (calc.) _____

Company Dunn-Man O&G

Farm Amanda Tennant #1

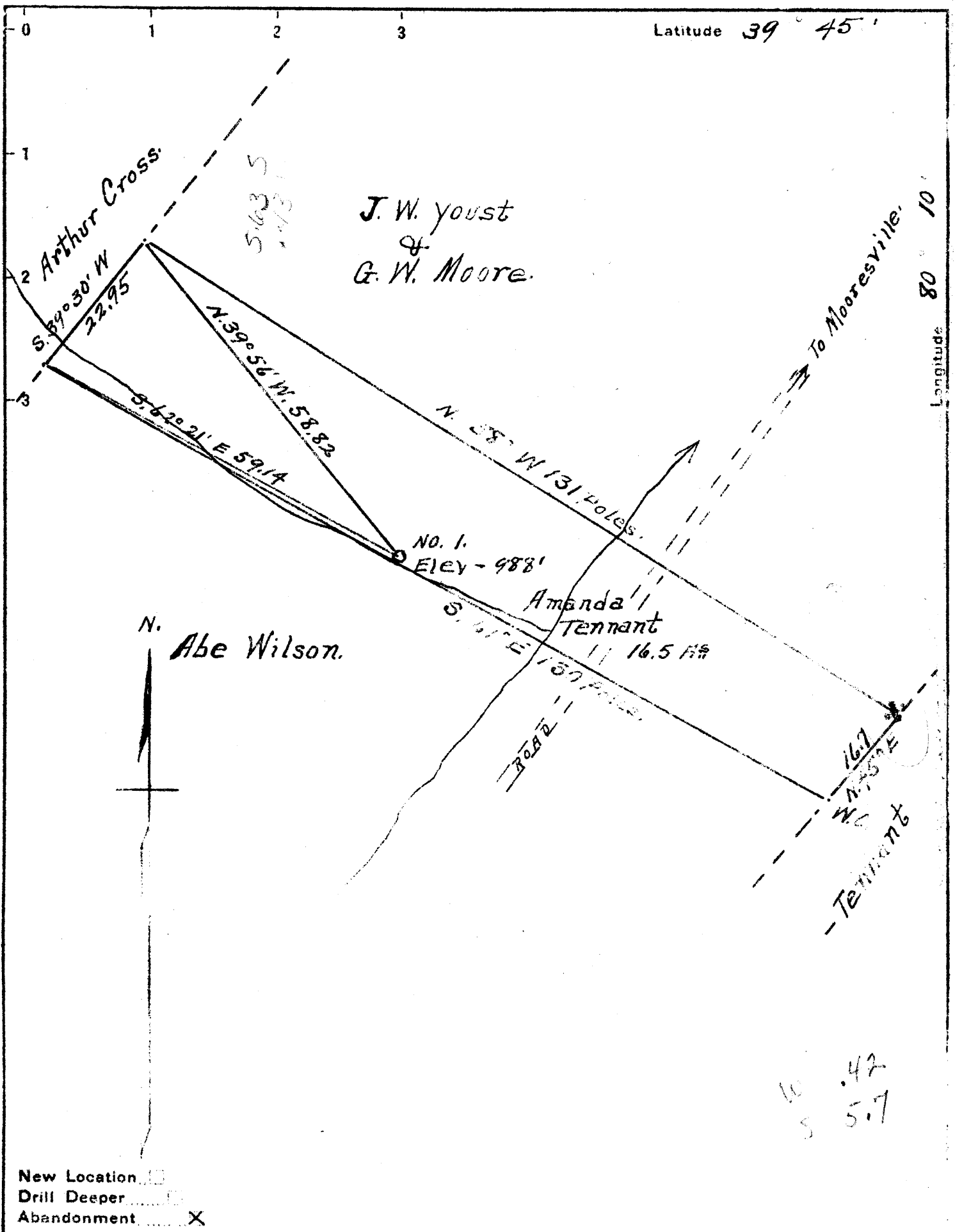
15' Quad _____
(sec.)

7.5' Quad Blacksville

District Clay

WELL LOCATION PLAT

County 061 Permit 30238



Company DUNN-MAR OIL & GAS CO.

Address Waynesburg, Pa.

Farm Amanda Tennant

Tract ONE Acres 16 1/2 Lease No. _____

Well (Farm) No. ONE Serial No. _____

Elevation (Spirit Level) 988'

Quadrangle Blacksville N.W.

County Monongalia District Clay

Engineer A. L. Headley

Engineer's Registration No. _____

File No. _____ Drawing No. _____

Date 7-19-1940 Scale 1 inch = 300 ft.

STATE OF WEST VIRGINIA
DEPARTMENT OF MINES
OIL AND GAS DIVISION
CHARLESTON

WELL LOCATION MAP
FILE NO. MON-238A

+ Denotes location of well on United States Topographic Maps, scale 1 to 62,500, latitude and longitude lines being represented by border lines as shown.

- Denotes one inch spaces on border line of original tracing.

Oil

WELL RECORD 61-30238

J.H. McDermott Oil

COMPANY

Record of Well No. 1 on Amanda Tennant Farm 16 Acres
Jakes Run Field Clay District Monongalia County W.Va. State
 Rig Commenced Jany. 12th. 1896 19 Completed Jany. 18th. 1896 19
 Drilling Commenced Feb. 16th. 1896 19 Completed April 5th. 1896 19
 Cost Per Foot _____ Contractor Lynch & Beaty Address _____
 Drillers Names _____

CONDUCTOR AND CASING USED IN DRILLING

Conductor 13 inch 10 inch 8 1-4 inch 6 5-8 inch 5 3-16 inch 4 inch 3 inch 2 inch
844ft. liner 1510 1817

CONDUCTOR AND CASING LEFT IN WELL

Conductor 13 inch 10 inch 8 3-4 inch 6 5-8 inch 5 3-16 inch 4 inch 3 inch 2 inch
844 liner 1510 1817 1879

Formation	Top	Bottom	Thickness	Formation	Top	Bottom	Thickness
GRAVEL OR				FORMATION			
QUICK SAND				SQUAW			
FIRST WATER				BEREA			
BLUFF SAND				GANTZ			
NATIVE COAL				FIFTY FOOT			
WBG. COAL				THIRTY FOOT			
MAPEL COAL				GORDON STRAY			
PGH. COAL	<u>490</u>			GORDON			
MURPHY SAND				FOURTH			
LITTLE DKRD.				FIFTH			
BIG DKRD.				BAYARD			
GAS SAND				ELIZABETH			
FIRST SALT SAND							
SECOND SALT SAND							
LITTLE LIME							
PENCIL CAVE							
BIG LIME							
BIG INJUN	<u>1812</u>						
Oil	<u>1885</u>						
"	<u>1890</u>						
				TOTAL DEPTH	<u>1907</u>		

Gas Test Open
 Minute Test
 Oil Production 88 bbls. daily
 Well Tubed with _____ Tubing Packer Set in _____ Sand, Top of Packer,
 Well Tubed with 1879 Tubing 6 Ft. working bbl. 22 Anchor, Perforation at, 1894 Perforation
 Air Hole 1885

SHOT RECORD

Date	Amount	Size of Shell	Top	Bottom	Oil on Shot	Results
Aug. 6th. 1896	5 qts.					55 bbls.
Nov. 20" 1896	10 "	6ft.				
April 19" 1897	15 "	7 1/2"	1885			20 "
May 22 1900	30 "	11 "	1885			12 1/2 "
Jul. 6" 1901	40 "	1 20qt. 2 10qt.				
Mar. 10" 1903	50 "	1 30" 1 20"	1885			7 1/2 "
Apr. 1904	60 "	1 " 1 2-1 10	1884	1890		
Feb. 1906	80 "					
May 19" 1913	60 "		1884			3 "

REMARKS: