

LATITUDE 39° 40' 00"

75'
+

100,0108

LONGITUDE

7'5 OGIS topo location

7.5' loc	<u>0.175</u>	15' loc	<u>0.175</u>
	<u>0.720</u>	(calc.)	<u>0.720</u>

Company Dunn Mas O&G

Farm Joseph Varnes #2

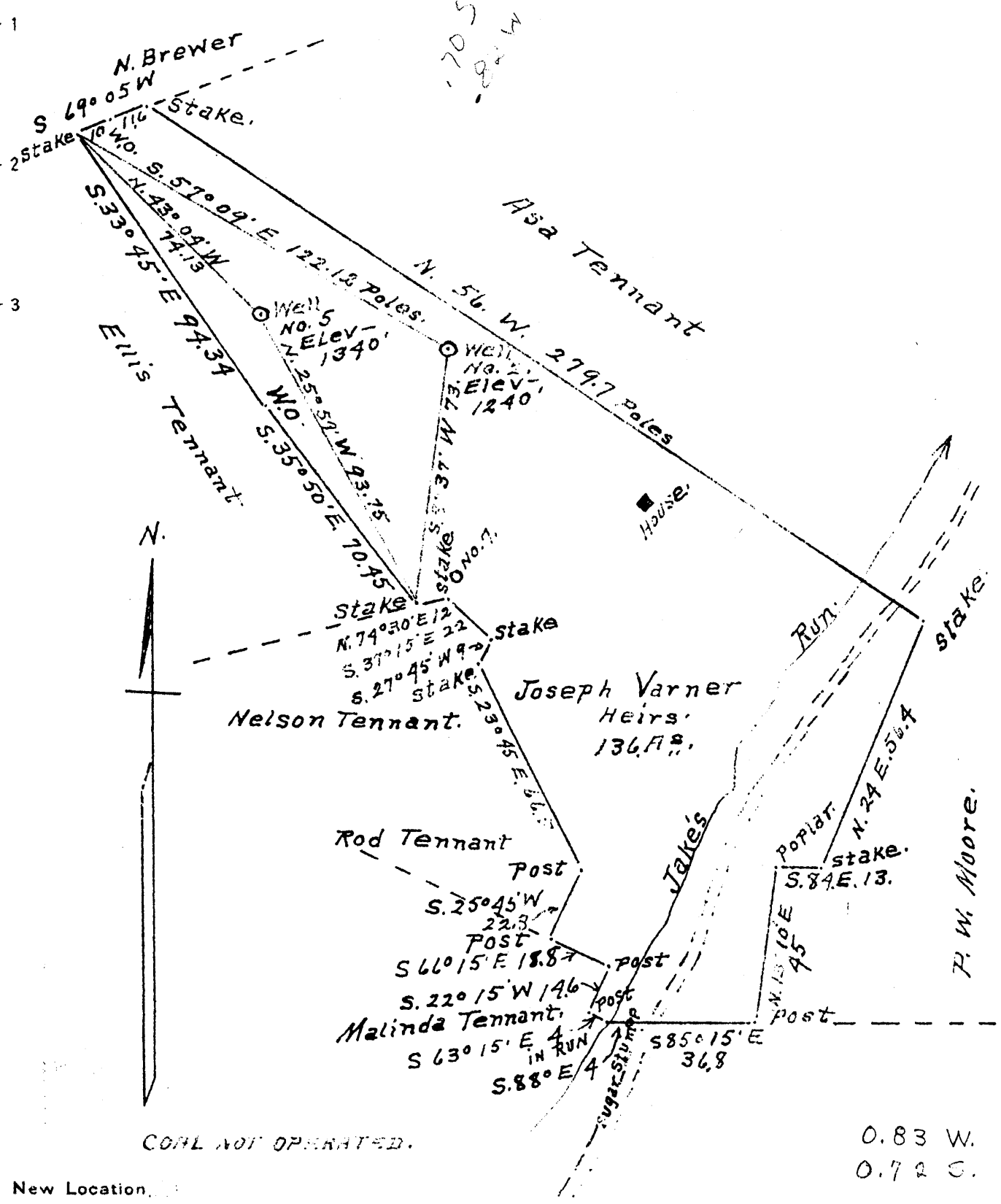
Quad Blacksville

County Monongahela

District Clay

WELL LOCATION MAP

File No. 061-237A



COAL NOT OPERATED.

0.83 W.
0.72 S.

New Location
 Drill Deeper
 Abandonment

Company JUNN MAR OIL & GAS Co.
 Address Waynesburg Pa.
 Farm Joseph Varner heirs.
 Tract ONE Acres 136 - Lease No. _____
 Well (Farm) No's 2 & 5 Serial No. _____
 Elevation (Spirit Level) #2 = 1240'; No 5 = 1340'
 Quadrangle Blacksville
 County Monongalia District Clay
 Engineer A. L. Headley
 Engineer's Registration No. _____
 File No. _____ Drawing No. _____
 Date 6-27-1940 Scale 1 inch = 40 poles

STATE OF WEST VIRGINIA
 DEPARTMENT OF MINES
 OIL AND GAS DIVISION
 CHARLESTON

WELL LOCATION MAP
 FILE NO. MON-2356-237A
 WELL 5 2

+ Denotes location of well on United States Topographic Maps, scale 1 to 62,500, latitude and longitude lines being represented by border lines as shown.
 - Denotes one inch spaces on border line of original tracing.

Gas

WELL RECORD 61-30237

Pentress Gas

COMPANY

Record of Well No. 2 on Jos. Varner Heirs Farm 127 Acres
Jakes Run Field Clay District Monongalia County W. Va. State
 Rig Commenced 19 Completed 19
 Drilling Commenced 19 Completed 19
 Cost Per Foot Contractor Address
 Drillers Names

CONDUCTOR AND CASING USED IN DRILLING

Conductor 13 inch 10 inch 8 1-4 inch 6 5-8 inch 5 3-16 inch 4 inch 3 inch 2 inch

CONDUCTOR AND CASING LEFT IN WELL

Conductor 13 inch 10 inch 8 3-4 inch 6 5-8 inch 5 3-16 inch 4 inch 3 inch 2 inch

Formation	Top	Bottom	Thickness	Formation	Top	Bottom	Thickness
GRAVEL OR				FORMATION			
QUICK SAND				SQUAW			
FIRST WATER				BEREA			
BLUFF SAND				GANTZ			
NATIVE COAL				FIFTY FOOT			
WBG. COAL				gas	2610	small	
MAPEL COAL	750			THIRTY FOOT			
PGH. COAL				GORDON STRAY			
MURPHY SAND				GORDON			
LITTLE DKRD.				FOURTH			
BIG DKRD.				FIFTH			
GAS SAND				BAYARD	3186		
FIRST SALT SAND				Gas	3195	Small	
SECOND SALT SAND				"	3205	"	
LITTLE LIME				ELIZABETH			
PENCIL CAVE							
BIG LIME							
BIG INJUN	Oil	2159					
				TOTAL DEPTH	3275		

Gas Test Open 20/10 water 1" 5 min. 10# 10 min. 40# 24 hrs. 660 72 hrs. 880 Blew up tubing,
 Minute Test
 Oil Production 10 bbls. daily Second packer 2210
 Well Tubed with 3185 Tubing Packer Set in 3175 Sand, Top of Packer, Perforation 3210
 Well Tubed with Tubing Ft. working bbl. Anchor, Perforation at, Air Hole

Shots for oil

SHOT RECORD

Date	Amount	Size of Shell	Top	Bottom	Oil on Shot	Results
No date	4 qts.					
" "	20 "					Fair results
Nov. 13th. 1901	30 "	11ft.	2157	2168		
Apr. 1 1910	40 "	2 20 qt.	2157			

REMARKS: This well drilled down from Big Injun Nov. 1913 Tubed with 90ft. 3" for anchor, ~~xxxx~~ 3100 ft. 2" tubing setting on 85ft. cavings,