

Latitude

+ .67s
.79w

Longitude

Topo Location

7.5' Loc. _____ 15' Loc. _____
(calc.) _____

Company Dunn - Man O'G

Farm Joseph Varner Hrs # 7

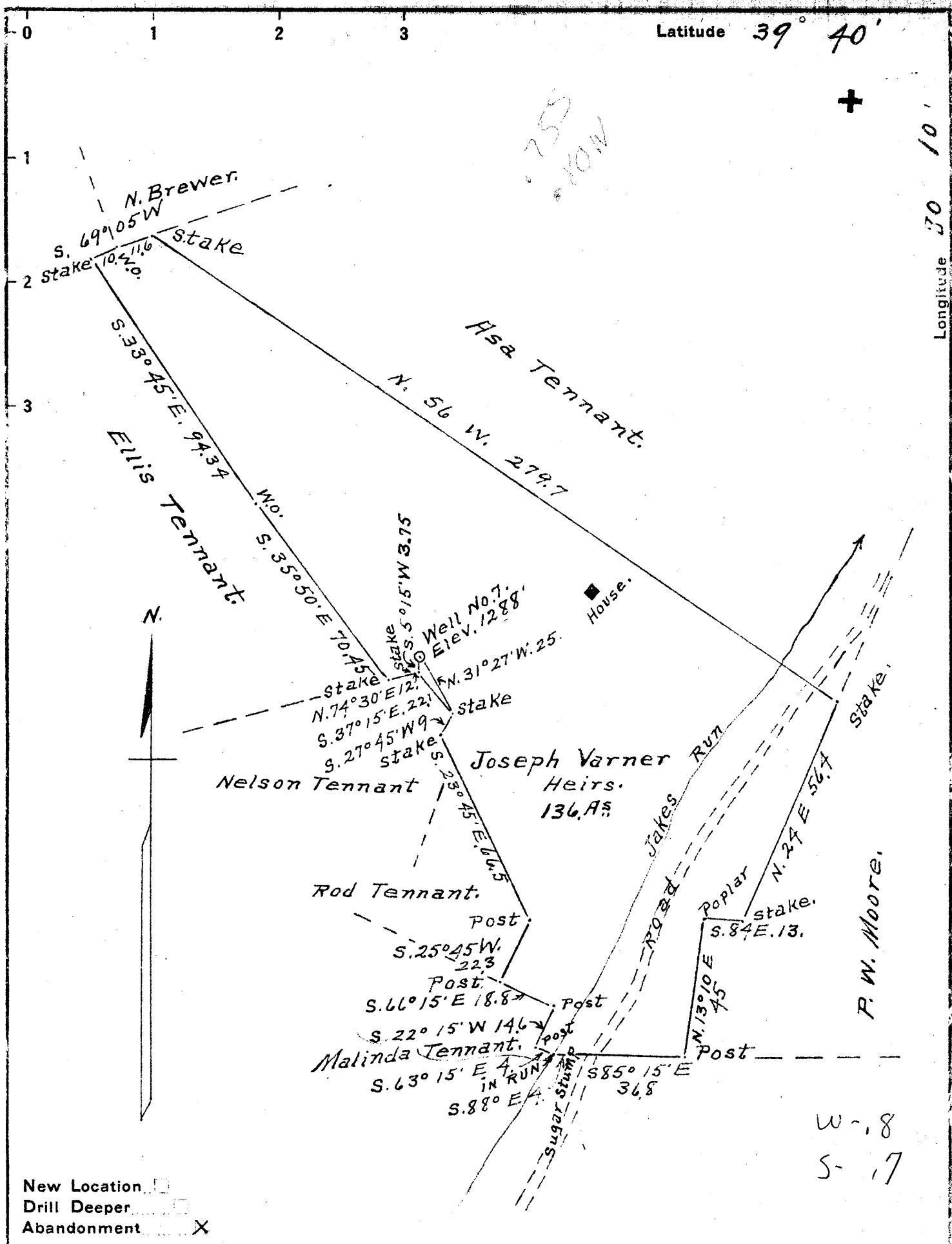
15' Quad _____
(sec.)

7.5' Quad Blacksville

District Obay

WELL LOCATION PLAT

County Obi Permit 30221



New Location
 Drill Deeper
 Abandonment

Company DUNN-MAR OIL & GAS Co.
 Address Waynesburg, Pa.
 Farm Joseph Varner heirs.
 Tract ONE Acres 136- Lease No. _____
 Well (Farm) No. 7 Serial No. _____
 Elevation (Spirit Level) 1288'
 Quadrangle Blacksville W.
 County Monongalia, District Clay
 Engineer A. L. Headley
 Engineer's Registration No. _____
 File No. _____ Drawing No. _____
 Date 3-16-1940 Scale 1 inch = 40 poles

STATE OF WEST VIRGINIA
 DEPARTMENT OF MINES
 OIL AND GAS DIVISION
 CHARLESTON

WELL LOCATION MAP
 FILE NO. MON-221A

+ Denotes location of well on United States Topographic Maps, scale 1 to 62,500, latitude and longitude lines being represented by border lines as shown.

- Denotes one inch spaces on border line of original tracing.

J.H. McDermott Oil

COMPANY

Record of Well No. 7 on Jos. Varner Heirs Farm 127 Acres
Jakes Run Field Clay District Monongalia County W. Va. State
 Rig Commenced 19 Completed 19
 Drilling Commenced 19 Completed 19
 Cost Per Foot Contractor Address
 Drillers Names

CONDUCTOR AND CASING USED IN DRILLING

Conductor 13 inch 10 inch 8 1-4 inch 6 5-8 inch 5 3-16 inch 4 inch 3 inch 2 inch

CONDUCTOR AND CASING LEFT IN WELL

Conductor 13 inch 10 inch 8 3-4 inch 6 5-8 inch 5 3-16 inch 4 inch 3 inch 2 inch
840 liner Full string

Formation	Top	Bottom	Thickness	Formation	Top	Bottom	Thickness
GRAVEL OR				FORMATION			
QUICK SAND				SQUAW			
FIRST WATER				BEREA			
BLUFF SAND				GANTZ			
NATIVE COAL				FIFTY FOOT			
WBG. COAL				THIRTY FOOT			
MAPEL COAL				GORDON STRAY			
PGH. COAL				GORDON			
MURPHY SAND				FOURTH			
LITTLE DKRD.				FIFTH			
BIG DKRD.				BAYARD			
GAS SAND				ELIZABETH			
FIRST SALT SAND							
SECOND SALT SAND							
LITTLE LIME							
PENCIL CAVE							
BIG LIME							
BIG INJUN							
<u>Oil</u>	<u>2179</u>						
				TOTAL DEPTH	<u>2199</u>		

Gas Test Open
 Minute Test
 Oil Production 100 bbls. daily
 Well Tubed with 2173 Tubing Packer Set in 6 Ft. working bbl. 20 Sand, Top of Packer, Perforation
 Well Tubed with 2173 Tubing 6 Ft. working bbl. 20 Anchor, Perforation at, 2185 Air Hole 2179

SHOT RECORD

Date	Amount	Size of Shell	Top	Bottom	Oil on Shot	Results
No date	10 qts.					
" "	20 "					
" "	40 "					
" "	40 "					
April 21 1899	40 "	5 3/4 shells				
Jan. 14 1901	55 "	6 " "	2077			7 1/2 bbls.
Nov. 1 1905	70 "	7 10 qt. shells	2078			
Sept. 19 1908	80 "	2 30 1 20 "	2177			" "

REMARKS: