

LATITUDE 39° 43'

LONGITUDE 79° 50'

5.79 W  
2.90 S

M. J. GARLOW

GUSSIE V. HEROD  
236 A. 75 R ±

EVANS WATERS

WELL NO. 4  
ELEV. 1033.7

5.88 W  
2.95 S  
or 1.37 W W  
79° 55'

JUL - 3 1939

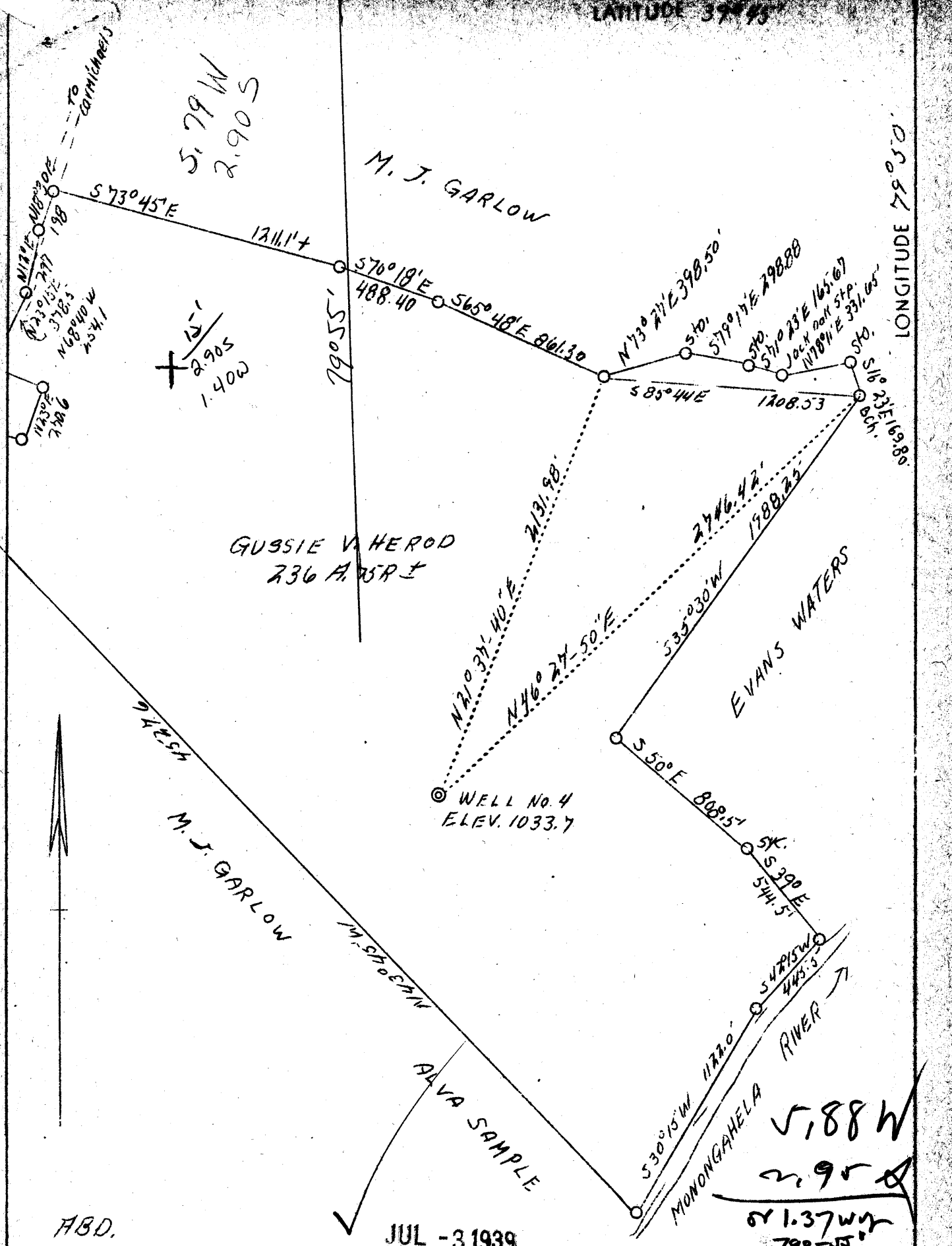
Company L.J.Houze Convex Glass Co.  
 Address Point Marion Pa.  
 Farm Gussie V. Herod  
 Tract 1  
 Acres 236  
 Serial No. 8925  
 Well(Farm)No. 4  
 El.(S.L.) 1033.7  
 Quadrangle Morgantown  
 County Monongalia  
 District Cass  
 Eng. James M. Cabbage  
 Eng. Reg. No. 3185 - Pa.  
 Drawing No. 185  
 Date 6/19/39  
 Scale 1" - 600'

STATE OF WEST VIRGINIA  
 Department of Mines  
 OIL AND GAS DIVISION  
 Charleston

WELL LOCATION MAP  
 File No. MOW-203-A

X Denotes location of well on U.S. Topographic Maps, scale 1 to 62,500, latitude and longitude lines being represented by border lines of as shown.  
 - Denotes one inch spaces on border line of original tracing.

*(Handwritten scribbles and "NW")*



ABD.

WEST VIRGINIA DEPARTMENT OF MINES  
OIL AND GAS DIVISION

277

WELL RECORD

Permit No. 203-A  
Morgantown W.C.

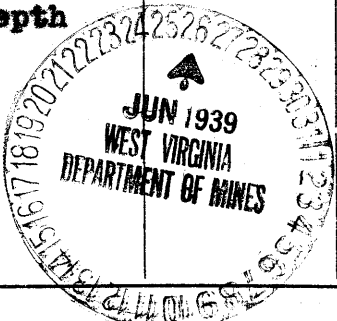
Oil or Gas Well Gas  
(Kind)

Company L. J. House Convex Glass Co.  
Address G. E. Van Voorhis, Dilliner, Pa.  
Farm Gussie V. Herod Acres 230  
Location (waters) \_\_\_\_\_  
Well No. 8925 Elev. 1033.7  
District Cass County Monongalia  
The surface of tract is owned in fee by Gussie V. Herod  
Address Maidenville, W. Va  
Mineral rights are owned by Gussie V. Herod  
Address \_\_\_\_\_  
Drilling commenced \_\_\_\_\_  
Drilling completed \_\_\_\_\_  
Date shot \_\_\_\_\_ Depth of shot \_\_\_\_\_  
Open Flow 0/10ths Water in 1 Inch  
\_\_\_\_\_ /10ths Merc. in \_\_\_\_\_ Inch  
Volume \_\_\_\_\_ Cu. Ft.  
Rock Pressure \_\_\_\_\_ lbs. \_\_\_\_\_ hrs.  
Oil \_\_\_\_\_ bbls., 1st 24 hrs.  
Fresh water \_\_\_\_\_ feet \_\_\_\_\_ feet  
Salt water 730 feet \_\_\_\_\_ feet

Casing and Tubing	Used in Drilling	Left in Well	Packers
Size			
16			Kind of Packer
13			
10			Size of
8 1/4			
6 5/8		<u>1136'</u>	Depth set
5 3/16			
3			Perf. top
2		<u>3285'</u>	Perf. bottom
Liners Used			Perf. top
			Perf. bottom

CASING CEMENTED \_\_\_\_\_ SIZE \_\_\_\_\_ No. FT. \_\_\_\_\_ Date \_\_\_\_\_  
COAL WAS ENCOUNTERED AT 460 FEET 120 INCHES  
695 FEET 96 INCHES FEET INCHES  
FEET INCHES FEET INCHES

Formation	Color	Hard or Soft	Top	Bottom	Oil Gas or Water	Depth Found	Remarks
Slate & lime			0	290	None		
Sand			290	310	"		
Little Dunkard Sand			316	345	"		
Slate			345	420	"		
Big Dunkard sand			420	460	"		
Coal			460	470	"		
Slate			470	500	"		
Gas sand			500	520	"		
Lime & sand			520	600	"		
Slate & lime			600	695	"		
Coal			695	703	"		
Slate & shells			703	720	"		
Salt sand			720	910	Water	730	
Slate, sand & lime			910	1005	None		
Red rock			1005	1085	"		
Little lime			1085	1092	"		
Slate			1092	1100	"		
Big lime			1100	1200	"		
Big Injun sand			1200	1342	"		
100 ft. Sand			1490	1540	"		
Gas sand			1750	1768	"		
50 ft. sand.			1785	1840	"		
4th sand			2175	2180	"		
5th sand			2190	2215	"		
Sand			2225	2247	"		
Rayard sand			2305	2363	"		
Elizabeth sand			2853	2860	"		
Total depth				3285			



Formation	Color	Hard or Soft	Top	Bottom	Oil, Gas or Water	Depth Found	Remarks

Date June 24, 19 39

APPROVED L.J. Houze Convex Glass Co., Owner

By G. E. Van Voorhis Supt.  
(Title)