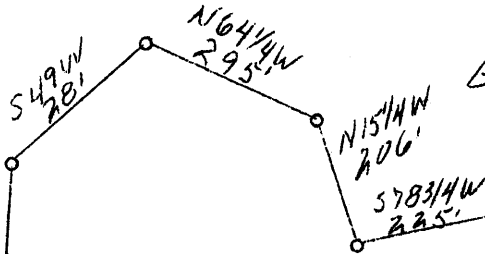


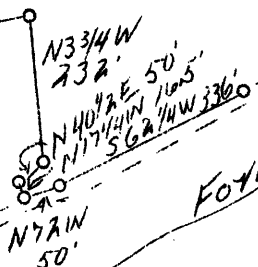
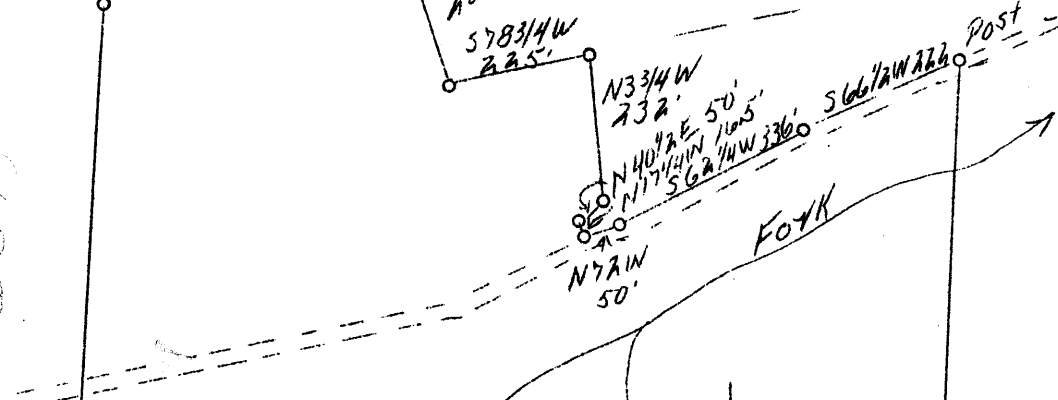
LATITUDE 39°45'

LONGITUDE 80°20'

EE White



241W
300



Fork

Brusky

Jas. C. White

Chas. White
72.72 A

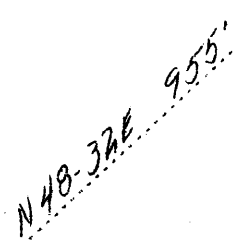
J. G. White

241W

54-57W

N41E

N° 5391



2,45 W
3,1 S

South Edge Road

S84-18E

1371

E. C. Clovis

ABD.

Company	Pittsburgh & W.Va. Gas Co.
Address	608 Union Bk. Clarksburg, W.Va.
Farm	Chas. White
Acres	72.72
Lease No.	21204
Serial No.	5391
Well(Farm)No.	1
El.(S.L.)	1270
Quadrangle	Mannington N.W. 2.4
County	Monongalia
District	Battelle
Eng.	James D. Jeffries
Date	5/24/39
Scale	1" = 300'

STATE OF WEST VIRGINIA
Department of Mines
OIL AND GAS DIVISION
Charleston

WELL LOCATION MAP

File No. MON-201-A

x Denotes location of well on U.S. Topographic Maps, scale 1 to 62,500, latitude and longitude lines being represented by border lines as shown.

- Denotes one inch spaces on border line of original tracing.