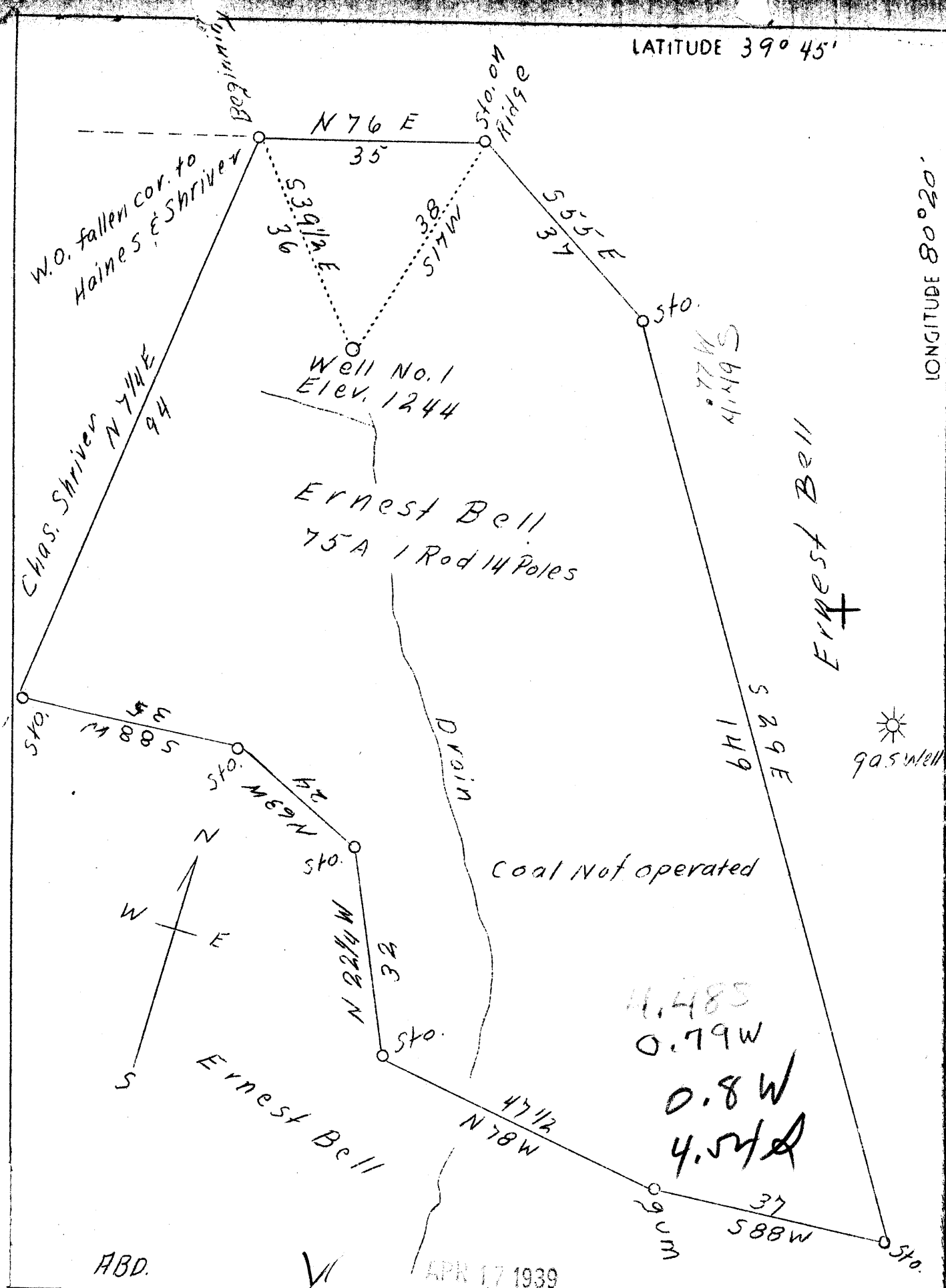


LATITUDE 39° 45'

LONGITUDE 80° 20'



Company	I. H. Beren
Address	Marietta, Ohio
Farm	Ernest Bell
Tract	1
Acres	75
Lease No.	P & W.Va. 5295
Well Farm No.	1
El. (S.L.)	1244
Quadrangle	Mannington
County	Monongalia
District	Battle
Eng.	J. M. Cochran
Eng. Reg. No.	Surveyor
Date	3/10/39
Scale	1" - 20 Rods

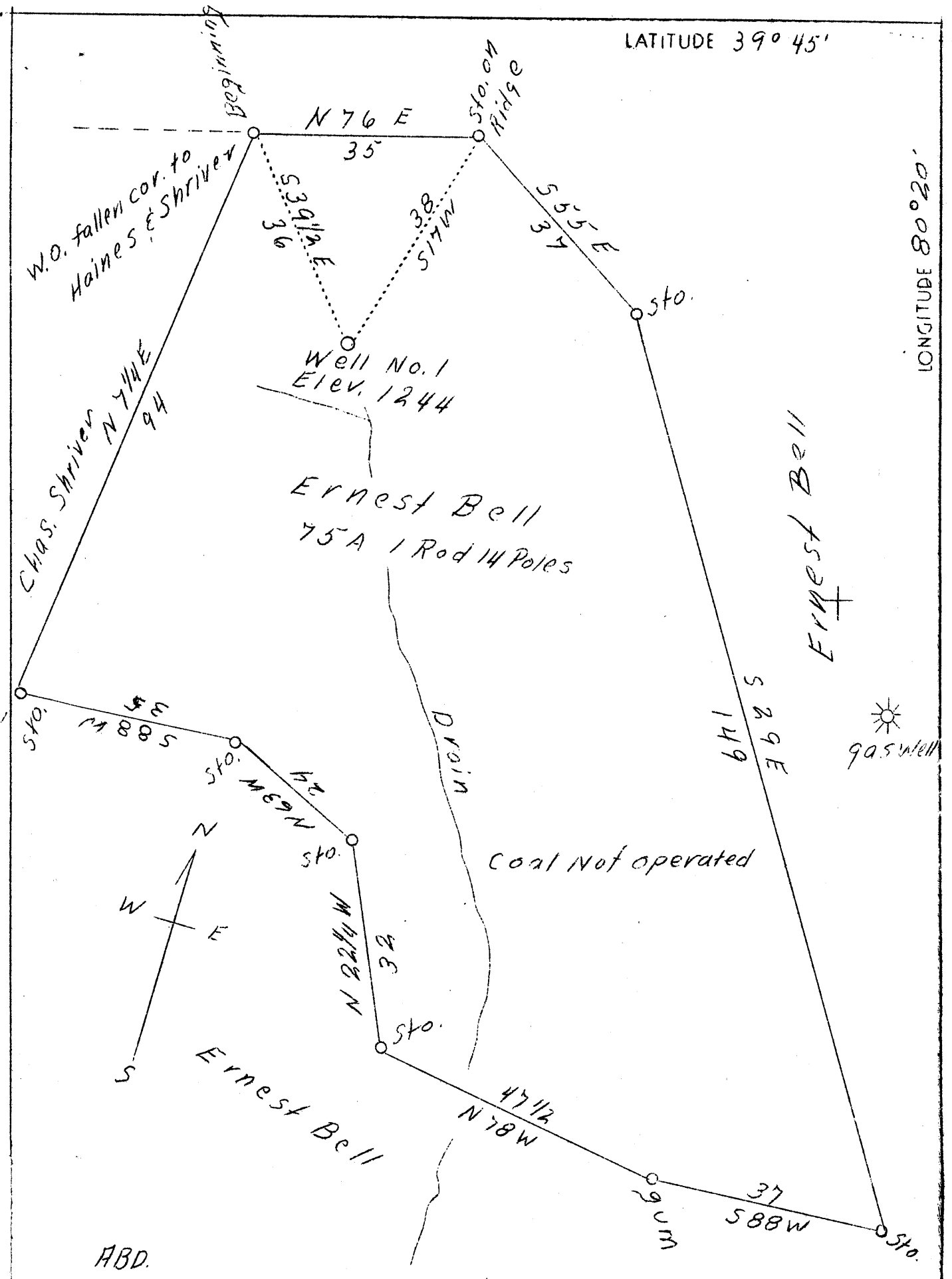
STATE OF WEST VIRGINIA
Department of Mines
OIL AND GAS DIVISION
Charleston

WELL LOCATION MAP

File No. MON-196-11 ^{192-A}

x Denotes location of well on U.S. Topographic Maps, scale 1 to 62,500 latitude and longitude lines being represented by border lines as shown

- Denotes one inch space on border line of original tracing.



ABD.

Company	I. H. Beren
Address	Marietta, Ohio
Farm	Ernest Bell
Tract	1
Acres	75
Lease No.	P & W.Va. 5295
Well Farm No.	1
El. (S.L.)	1244
Quadrangle	Mannington
County	Monongalia
District	Batelle
Eng.	J. M. Cochran
Eng. Reg. No.	Surveyor
Date	3/10/39
Scale	1" - 20 Rods

STATE OF WEST VIRGINIA
 Department of Mines
 OIL AND GAS DIVISION
 Charleston

WELL LOCATION MAP

File No. MON-196-A

* Denotes location of well on U.S. Topographic Maps, scale 1 to 62,500 latitude and longitude lines being represented by border lines as shown

- Denotes one inch spaces on border line of original tracing.

192A

Battelle District, Monongalia County, W. Va.

By Israel H. Boren, Marietta, Ohio.

Well was originally drilled to Bayard Sand to a depth of 3503'.
Plugged back in March 21, 1931, to 2550', by Pittsburgh & W. Va.

Gas Co. Depth of well now 2550'.

10" casing, 355'; 8 1/2", 1542'; 6 3/8", 2274'; all left in.

Gas well. Abandonment reported to Dept. of Mines Dec. 29, 1938.

Record to RCF from Mrs. Griffith March 6, 1939.

	Top.	Bottom.
Unrecorded	0	300
Coal, black, soft	300	303
Slate, dark	303	325
Lime, light, hard	325	505
Bluff Sand, light, hard	505	530
Coal, black, soft	530	534
Slate, dark, soft	534	540
Lime, light, hard	540	600
Unrecorded	600	635
Slate, dark, soft	635	640
Sand, light, hard	640	690
Coal, black, soft	690	695
Lime, light, hard	695	715
Sand, light, hard	715	775
Slate, dark, soft	775	810
Slate, lime, and shells, hard	810	830
Lime, white	830	952
Mapletown (Sandakley) Coal	952	957
Lime, white, shelly	957	1047
Pittsburgh Coal	1047	1054
Slate, lime, shells, white	1054	1220
Slate, lime, shells, red	1220	1250
Sand, white	1250	1265
Slate, lime, shells, white	1265	1346
Slate, red	1346	1375
Slate, lime, shells	1375	1512
Big Dunkard Sand	1512	1600
Slate, dark, soft	1600	1640
Lime, light, hard	1640	1650
Sand, light, hard	1650	1675
Slate, dark, soft	1675	1680
Lime, light, hard	1680	1695
Slate and lime, dark, hard	1695	1730
1st Salt Sand, white, hard	1730	1805
Slate, dark, soft	1805	1824
2nd Salt Sand, white, hard	1824	1910
Slate, shells, sand, hard	1910	1930
Lime and slate, dark, hard	1930	2020
Sand, white, hard	2020	2090
Slate and lime, dark, hard	2090	2140
Red rock, soft, shelly	2140	2230
Lime and slate, white, hard	2230	2256
Big Lime, white, hard	2256	2330
Big Injun Sand, white, hard	2330	2550
Originally drilled to Bayard Sand to a depth of 3503'.		
Plugged back, March 21, 1931, to		2550
Depth of well now		2550

WEST VIRGINIA DEPARTMENT OF MINES
OIL AND GAS DIVISION

WELL RECORD

265

Permit No. 192 A

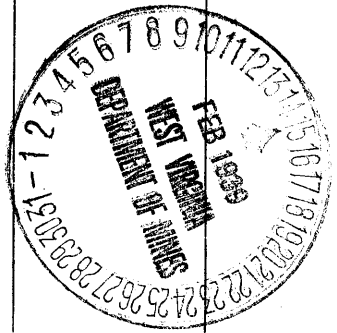
Oil or Gas Well Gas
(Kind)

Company Israel H. Beren
Address Marietta, Ohio
Farm E. Bell Acres.....
Location (Smyx)
Well No. 5295 Elev.....
District Battelle County Monongalia
The surface of tract is owned in fee by.....
Address.....
Mineral rights are owned by Ernest Bell
R. F. D. Address Burton, W. Va.
Drilling commenced.....
Drilling completed.....
Date shot..... Depth of shot.....
Open Flow /10ths Water in..... Inch
/10ths Merc. in..... Inch
Volume..... Cu. Ft.
Rock Pressure..... lbs..... hrs.
Oil..... bbls., 1st 24 hrs.
Fresh water..... feet..... feet
Salt water..... feet..... feet

Casing and Tubing	Used in Drilling	Left in Well	Packers
Size			
16			Kind of Packer.....
13			
10	355	355	Size of.....
8 1/4	1542	1542	
6 5/8	2274	2274	Depth set.....
5 3/16			
3			Perf. top.....
2			Perf. bottom.....
Liners Used			Perf. top.....
			Perf. bottom.....

CASING CEMENTED..... SIZE..... No. FT..... Date.....
COAL WAS ENCOUNTERED AT..... FEET..... INCHES
..... FEET..... INCHES..... FEET..... INCHES
..... FEET..... INCHES..... FEET..... INCHES

Formation	Color	Hard or Soft	Top	Bottom	Oil Gas or Water	Depth Found	Remarks
Unrecorded			0	300			
Coal	Black	Soft	300	303			
Slate	Dark		303	325			
Lime	Light	Hard	325	505			
Bluff Sand	Light	Hard	505	530			
Coal	Black	Soft	530	534			
Slate	Dark	Soft	534	540			
Lime	Light	Hard	540	600			
Unrecorded			600	635			
Slate	Dark	Soft	635	640			
Sand	Light	Hard	640	690			
Coal	Black	Soft	690	695			
Lime	Light	Hard	695	715			
Sand	Light	Hard	715	775			
Slate	Dark	Soft	775	810			
Slate, Lime, & Shells		Hard	810	830			
Lime	White		830	952			
Mapletown Coal			952	957			
Lime	White	Shelly	957	1047			
Pittsburgh Coal			1047	1054			
Slate, Lime, Shells-White			1054	1220			
Slate, Lime, Shells-Red			1220	1250			
Sand	White		1250	1265			
Slate, Lime, Shells-White			1265	1346			
Slate	Red		1346	1375			
Slate, Lime, Shells			1375	1542			
B. D. Sand			1542	1600			
Slate	Dark	Soft	1600	1640			
Lime	Light	Hard	1640	1650			
Sand	Light	Hard	1650	1675			
Slate	Dark	Soft	1675	1680			
Lime	Light	Hard	1680	1695			
Slate & Lime	Dark	Hard	1695	1730			
1st Salt	White	Hard	1730	1805			
Slate	Dark	Soft	1805	1824			
2nd Salt	White	Hard	1824	1910			
Slate, Shells, Sand		Hard	1910	1930			
Lime & Slate	Dark	Hard	1930	2020			



Formation	Color	Hard or Soft	Top	Bottom	Oil, Gas or Water	Depth Found	Remarks
Sand	White	Hard	2020	2090			
Slate & Lime	Dark	Hard	2090	2140			
Red Rock	Red	Soft-Shelly	2140	2230			
Lime & Slate	White	Hard	2230	2256			
Big Lime	White	Hard	2256	2330			
Big Injun	White	Hard	2330	2560			
<p>Well was originally drilled to Bayard Sand to a depth of 3503'. Plugged back in March 21, 1931, to 2550' by Pittsburgh & West Virginia Gas Company. Depth of well now - 2550'</p>							

Date December 29, 1938

APPROVED Israel H. Breen, Owner

By _____
(Title)