

Latitude

+.18s  
-.90w

Longitude

Topo Location

7.5' Loc. \_\_\_\_\_ 15' Loc. \_\_\_\_\_  
(calc.) \_\_\_\_\_

Company Carnegie Nat Gas Co.

Farm CO # OL Tillington #1

15' Quad \_\_\_\_\_  
(sec.)

7.5' Quad Hundred

District Battelle

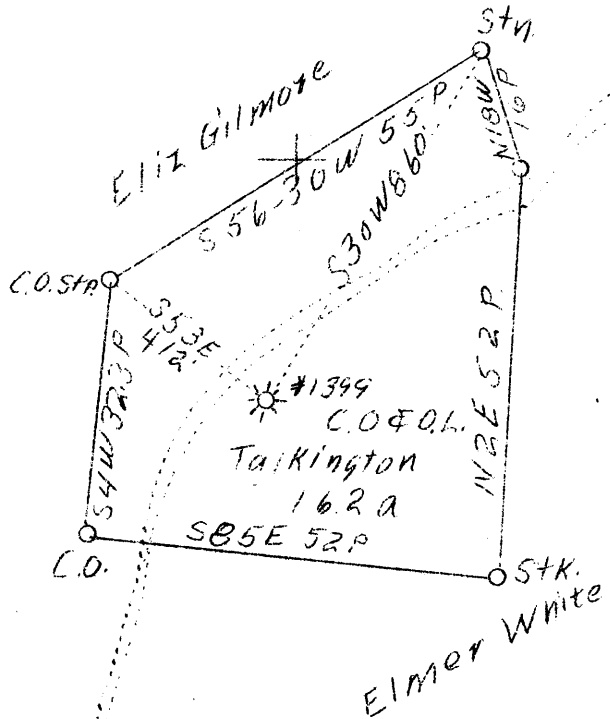
WELL LOCATION PLAT

County 061 Permit 30184

LATITUDE 39° 45'

LONGITUDE 80° 20'

3.00 S  
3.19 W



3.05  
3.19 W

3.0 S  
3.2 W

Well To Be Abandoned

Company	Carnegie Natural Gas Co.
Address	Pittsburgh, Pa.
Farm	C. O. & O. L. Talkington
Tract	One
Acres	17
Lease No.	10561-54
Well (Farm) No.	1
Serial No.	1399
Elevation	1417 (Spirit Level)
Quadrangle	Mannington N. <i>W.N.C.</i>
County	Monongalia
District	Battelle
Engineer	O. D. Nutter
Eng. Reg. No.	-
Date	June 9, 1938
Scale	1" = 800'

STATE OF WEST VIRGINIA  
 Department of Mines  
 OIL & GAS DIVISION  
 Charleston

WELL LOCATION MAP

File No. MON-184-A

X Denotes location of well on U. S. Topographic Maps, scale 1 to 62,500, latitude and longitude lines being represented by border lines as shown.

- Denotes one inch spaces on border line of original tracing.

WEST VIRGINIA DEPARTMENT OF MINES  
OIL AND GAS DIVISION

E 10561 54

259

WELL RECORD

Permit No. ....

WELL TO BE ABANDONED

Oil or Gas Well Gas  
(Kind)

Company Carnegie Natural Gas Co  
 Address 1014 Frick Bldg Pittsburgh Penna  
 Farm C. O. Talkington Acres 17  
 Location (waters) .....  
 Well No. 1-1399 Elev. 1417  
 District Battelle County Monongalia  
 The surface of tract is owned in fee by Cordelia O Talkington  
Garrison Address Penna  
 Mineral rights are owned by same and Alex White, Burton  
W. Va and S R White, Bruceston Mills W. Va  
 Drilling commenced 8/18/27 Deeper ?  
 Drilling completed 10/18/27 Deeper 11/16/27  
 Date shot 11/25/27 Depth of shot 3143-3148  
 Open Flow 40 /10ths Water in 1" in D.D. .... Inch  
4 /10ths Merc. in 2" in Original Drlg Inch  
 Volume ..... Cu. Ft.  
 Rock Pressure Original 220 lbs. .... hrs.  
 Oil in DD 1/2 bbls., 1st 24 hrs.  
 Fresh water ..... feet  
 Salt water 2060 & 2205 feet

Casing and Tubing	Used in Drilling	Left in Well	Packers
Size			Kind of Packer
16			
13			
8 3/4		364	Size of
6 5/8		1530	
5 3/16		2426	Depth set
3			Perf. top
2			Perf. bottom
Liners Used			Perf. top
			Perf. bottom

CASING CEMENTED ..... SIZE ..... No. FT. .... Date  
 COAL WAS ENCOUNTERED AT 843 FEET ..... INCHES  
1079 FEET ..... INCHES 1179 FEET ..... INCHES  
 FEET ..... INCHES FEET ..... INCHES

Formation	Color	Hard or Soft	Top	Bottom	Oil Gas or Water	Depth Found	Remarks
Waynesburg Coal			843	848			
Mapleton Coal			1079	1083			
Pittsburgh Coal			1179	1185			
Big Dunkard			1677	1768			
Gas Sand			1840	1912			
1st Salt Sand			1962	2010			
2nd Salt Sand			2038	2070	Water	2060	
3rd Salt Sand			2135	2242	Water	2205	
Little Lime			2382	2400			
Pencil Cave			2400	2403			
Big Lime			2403	2473			
Big Injun			2473	2695			
Fifty Foot			3144		Gas	3145-3147	
Total Depth			3160	Aug 18 1927			
Fifty Foot				3178			
Thirty Foot			3178	3190			
Gordon Stray			3243	3278	Show Oil	3256	
Gordon Sand			3281	3317	Show Gas	3312	
4th Sand			3332	3371			
5th Sand			3373		Oil	3374-3378	
Total Depth			3384				

Formation	Color	Hard or Soft	Top	Bottom	Oil, Gas or Water	Depth Found	Remarks

Date June 28 1938, 19...

APPROVED Carnegie Natural Gas Co, Owner

By R. H. Archer Land Agt.  
(Title)

Battelle District, Monongalia County, W. Va.

By Carnegie Natural Gas Co., 1016 Brick Bldg., Pittsburgh, Pa.  
On 17 acres.

Elevation, 1017' ±.

Surface owned by Cordelia O. Talkington, Garrison, Pa., and  
minerals by same and Alex. White, Burton, W. Va., and  
S. J. White, Bruceston Mills, W. Va.

Drilling commenced Aug. 18, 1927; completed, Oct. 16, 1927.

Drilled deeper Nov. 16, 1927.

Shot Oct. 24, 1927, at 3143-3145'; shot Nov. 25, 1927, at 3372-3377'

Open flow, 40/10ths water in 1" Deeper drilling.

Open flow, 4/10ths Merc. in 2", in original drilling.

Rock pressure, original, 200 lbs.

Oil, in deeper drilling, 1/2 bbl., 1st 24 hours.

Salt water at 2060 and 2205'.

10" casing, 384'; 8", 1530'; 6", 2426'; all left in.

Coal was encountered at 843-845, 1079-1083, and 1179-1185'.

Gas well. Abandonment reported to Dept. of Mines June 28, 1938.

Record to RPT from Mrs. Griffith August 12, 1938.

	Top.	Bottom.
Waynesburg Coal	843	- 845
Mapletown (Sensickley) Coal	1079	- 1083
Pittsburgh Coal	1179	- 1185
Big Buckard Sand	1677	- 1768
One Sand	1840	- 1912
1st Salt Sand	1962	- 2010
2nd Salt Sand (water, 2060')	2038	- 2070
3rd Salt Sand (water, 2205')	2135	- 2242
Little Line	2382	- 2400
Pencil Cave	2400	- 2403
Big Line	2403	- 2473
Big Injun Sand	2473	- 2695
Fifty-foot Sand (gas, 3143-3147')	3144	- ....
Total depth (Aug. 16, 1927)		3160
DEEPER DRILLING		
Fifty-foot Sand	....	- 3178
Thirty-foot Sand	3178	- 3190
Gordon Stray Sand (show oil, 3256')	3243	- 3278
Gordon Sand (show gas, 3312')	3281	- 3317
4th Sand	3332	- 3371
5th Sand (oil, 3374-3378')	3373	- ....
Total depth		3384