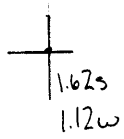


Latitude

Longitude



Topo Location

7.5' Loc. _____ 15' Loc. _____
 _____ (calc.) _____

Company South Penn Oil Co

Farm James Lemley #1

15' Quad _____
(sec.)

7.5' Quad Blacksville

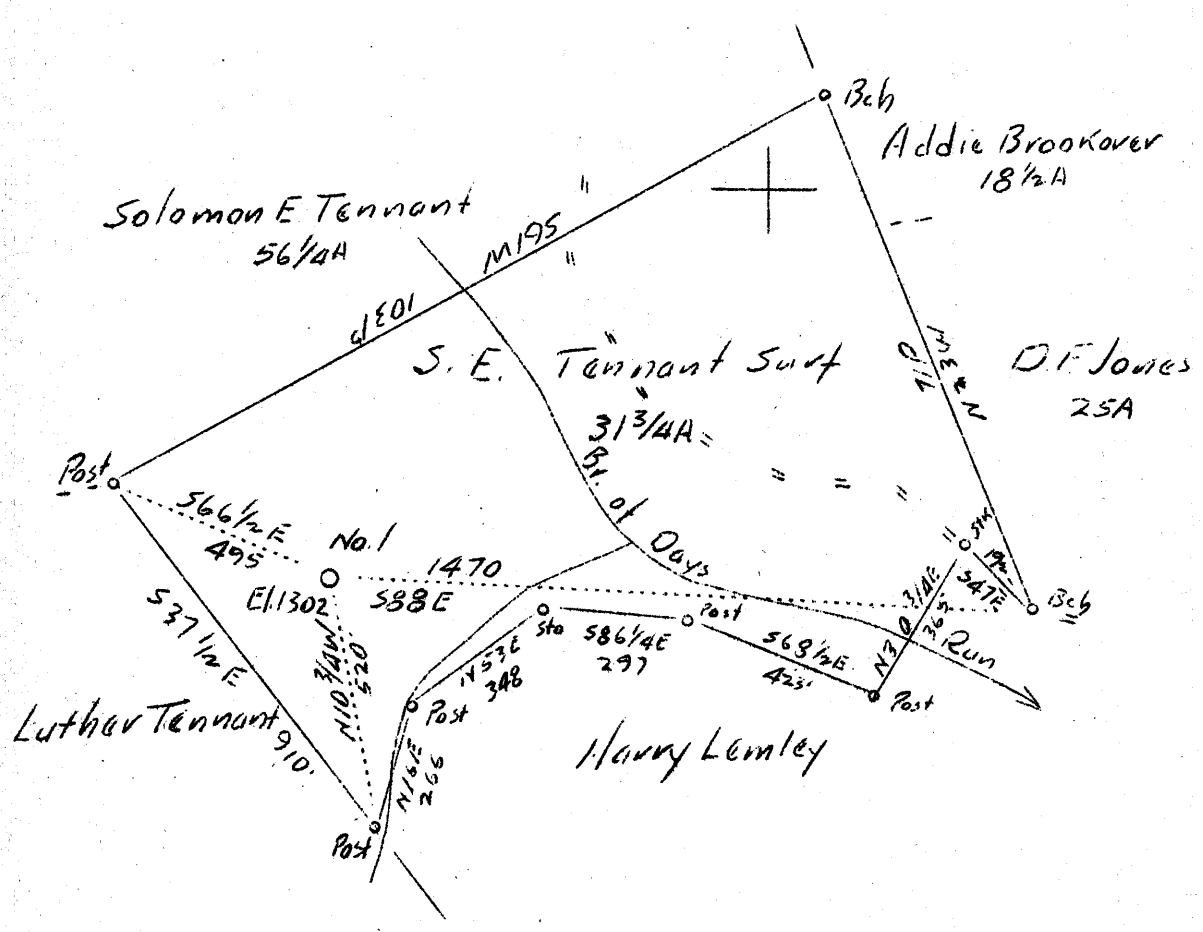
District Clay

WELL LOCATION PLAT

County Obi **Permit** 30168

3.20 W
4.15 S

LONGITUDE 80° 10'



4.15 S
3.20 W
3.25 W
4.22 S

Abd.

NOV 23 1937

Company	South Penn Oil Co.
Address	411 Seventh Ave., Pittsburgh, Pa.
Farm	James Lemley
Tract	Acres 36 Lease No. 69589
Well (Farm) No.	1 Serial No.
Quadrangle	Blacksville NW
County	Monongalia
District	Clay
Engineer	E.C. Tablor
Engineer's Registration No.	
File No.	Drawing No.
Date	Oct. 12, 1937 Scale 1" = 400'

STATE OF WEST VIRGINIA
Department of Mines
OIL AND GAS DIVISION
CHARLESTON

WELL LOCATION MAP
File No. MON-168A

+ Denotes location of well on United States Topographic Maps, scale 1 to 62,500, latitude and longitude lines being represented by border lines as shown.

-- Denotes one inch spaces on border

168A

Clay District, Monongalia County, W. Va.
 By South Penn Oil Co., 411 Seventh Ave., Pittsburgh, Pa.
 On 36 acres, on Thomas Run.
 Elevation, 1302' L.
 Surface owned by Solomon E. Tennant, R. D. No. 2, Fairview, W. Va.,
 and minerals by James Lenley, Lore City, Ohio.
 Drilling commenced July 10, 1922; completed, Sept. 29, 1922.
 Open flow, 8/10ths water in 2".
 Salt water at 1514-1560'.
 15" casing, 195' 4"; 10", 1299' 2"; 8", 1534' (pulled); 6", 2204';
 5", 3195' 6".
 Coal was encountered at 938-944'.
 Gas well. Abandonment reported to Dept. of Mines Nov. 10, 1937.
 Record to NCF from Mrs. Griffith 11-25-37.

	Top.	Bottom.
Pittsburgh Coal	938	- 944
Little Dunkard Sand	1383	- 1398
Big Dunkard Sand	1418	- 1463
Gas Sand	1600	- 1602
1st Salt Sand (show oil, 1690-1723)	1690	- 1723
2nd Salt Sand (hole full water, 1814-1860')	1733	- 1945
Murton Sand	2116	- 2136
Little Line	2156	- 2168
Pencil Cove	2168	- 2178
Big Line	2178	- 2226
Big Injun Sand (show oil, 2331-36')	2226	- 2440
Born Grit	2802	- 2822
Gents Sand	2874	- 2940
50-Ft. Sand	2865	- 2960
30-Ft. Sand	2992	- 3022
Gordon Stray Sand	3098	- 3118
Gordon Sand	3153	- 3175
Fourth Sand (show oil, 3200-3202')	3196	- 3230
Stray sand (gas, 3287')	3280	- 3290
Fifth Sand (gas, 3339')	3337	- 3341
Total depth		3377

WEST VIRGINIA DEPARTMENT OF MINES
OIL AND GAS DIVISION

243

WELL RECORD

Permit No. MON-168-A

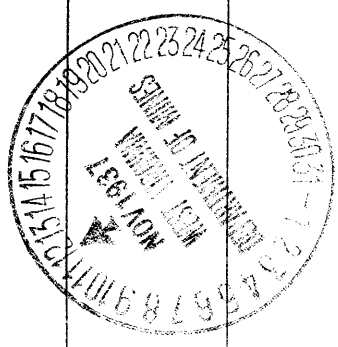
Oil or Gas Well GAS
(Kind)

Company South Penn Oil Company
 Address 411 Seventh Ave., Pittsburgh, Pa.
 Farm James Lemley Acres 36
 Location (waters) Thomas Run
 Well No. 1 Elev. 1302'
 District Clay County Monongalia
 The surface of tract is owned in fee by Solomon E. Tennant
R. D. No. 2, Address Fairview, W. Va.
 Mineral rights are owned by James Lemley
 Address Lore City, Ohio.
 Drilling commenced July 10, 1922
 Drilling completed Sept. 29, 1922
 Date shot - Depth of shot -
 Open Flow 8/10ths Water in 2 Inch
- /10ths Merc. in - Inch
 Volume - Cu. Ft.
 Rock Pressure - lbs. - hrs.
 Oil - bbls., 1st 24 hrs.
 Fresh water - feet - feet
 Salt water 1814-1860 feet - feet

Casing and Tubing	Used in Drilling	Left in Well	Packers
Size			Kind of Packer
16.	<u>198' 4"</u>		
13.	<u>1299' 2"</u>		Size of
8 3/4	<u>1834' (Pulled)</u>		Depth set
6 5/8	<u>2204'</u>		Perf. top
5 3/16	<u>3195' 6"</u>		Perf. bottom
3.			Perf. top
2.			Perf. bottom
Liners Used			Perf. top
			Perf. bottom

CASING CEMENTED - SIZE - No. FT. - Date -
 COAL WAS ENCOUNTERED AT 938 FEET 72 INCHES
- FEET - INCHES - FEET - INCHES
- FEET - INCHES - FEET - INCHES

Formation	Color	Hard or Soft	Top	Bottom	Oil Gas or Water	Depth Found	Remarks
Pittsburgh Coal			938	944			
Little Dunkard			1383	1398			
Big Dunkard			1418	1463			
Gas Sand			1600	1642			
1st Salt Sand			1690	1723			
2nd Salt Sand			1733	1945	Water	1814-1860	Hole full
Maxon Sand			2116	2136			
Little Lime			2156	2168			
Pencil Cave			2168	2178			
Big Lime			2178	2226			
Big Injun Sand			2226	2440			
Berea Grit			2802	2822	Show Oil	2331-2336	
Gantz Sand			2824	2840			
Fifty Foot Sand			2865	2960			
Thirty Foot Sand			2992	3022			
Gordon Stray			3098	3118			
Gordon Sand			3153	3175			
Fourth Sand			3196	3230			
Stray Sand			3280	3290	Show Oil	3200-3202	
Fifth Sand			3337	3341	Gas	3287	
					Gas	3339	
Total Depth				3377			



Formation	Color	Hard or Soft	Top	Bottom	Oil, Gas or Water	Depth Found	Remarks

Date November 10, 1937

APPROVED SOUTH PENN OIL COMPANY, Owner

By Elton Young Land Agent.
(Title)