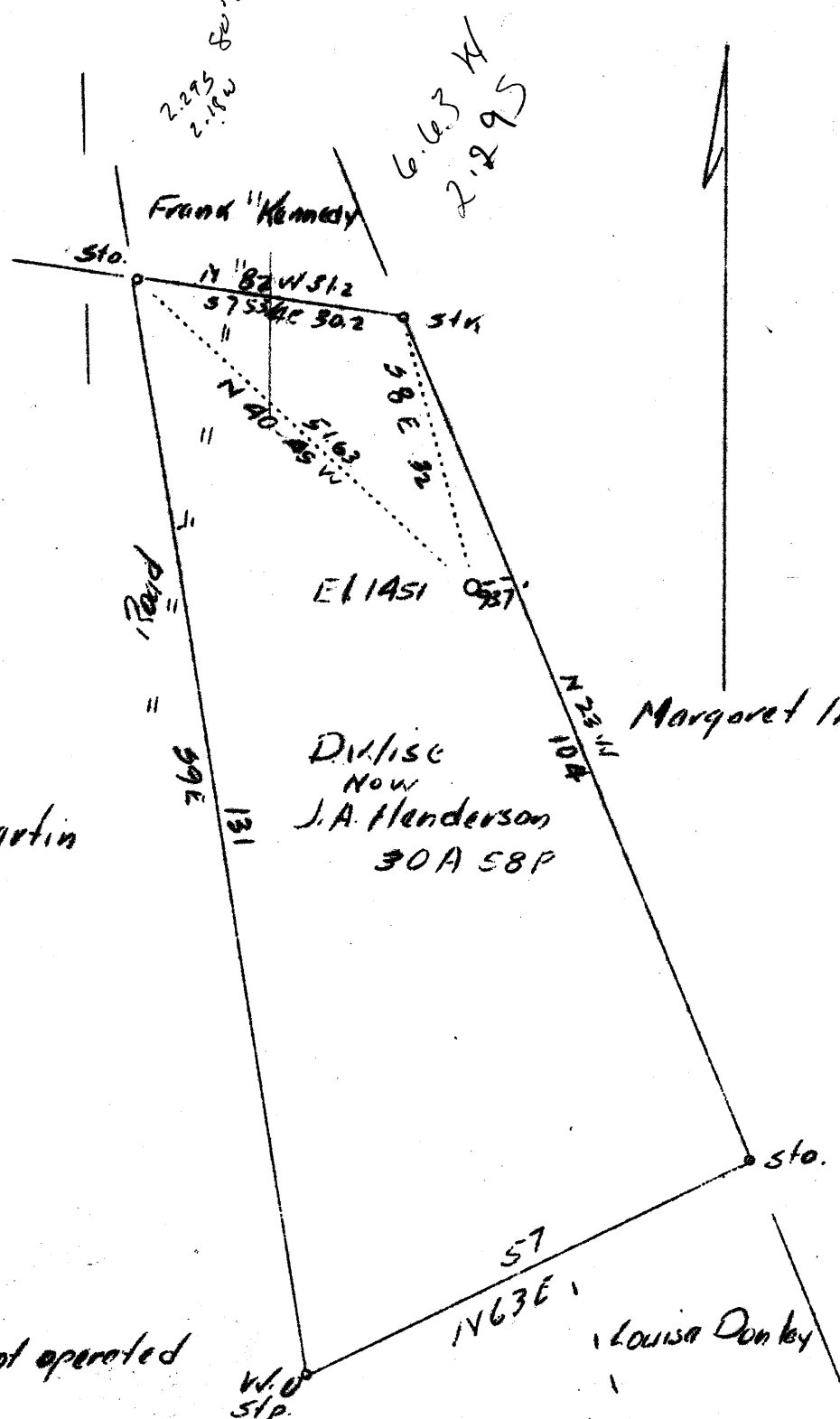
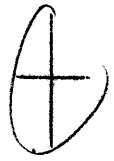


LATITUDE 39° 45'

LONGITUDE 80° 00'



Lemley Martin

Frank Kennedy

Margaret Inghram

Div. 15C
Now
J.A. Henderson
30A 58P

Louis Donkey

coal not operated

2,308
6.64W

(P)

~~6.74 W by 80' 00'~~
~~2.32~~

Abandonment

Company	Washington Oil Co.
Address	Core, W.Va.
Farm	D. Wise
Tract	One Across 30.4 - Lease No. One
Well (Farm) No.	6 Serial No.
Elevation (Spirit Level)	1451' NC
Quadrangle	Blacksville
County	Monongalia District Cass
Engineer	A.L. Headley
Engineer's Registration No.	
File No.	Drawing No.
Date	7-2-1937 Scale 1" = 20 Feet

STATE OF WEST VIRGINIA
 Department of Mines
 OIL AND GAS DIVISION
 CHARLESTON

WELL LOCATION MAP
 File No. MON-158A

Denotes location of well on United States Topographic Maps, scale 1 to 62,500, latitude and longitude lines being represented by border lines as shown.

Denotes one inch spaces on border line of original tracing.

Cass District, Monongalia County, W. Va.
 By Washington Oil Co., Core, W. Va. (Chas. M. Jolly, Supt.)
 On 30 acres, on Wade Run.
 Elevation, 1451' L.
 Surface owned by Jas. Henderson, Mt. Morris, Pa., and minerals by
 Colesread Co., Wilmington, Delaware, and James Henderson Heirs,
 R. F. D. No. 2, Mt. Morris, Pa.
 Shot, May, 1908, at 2291'.
 6 3/8" casing, 1926'; 5 1/2".....cut.
 Coal was encountered at 839 and 926'.
 Oil well. Abandonment reported to Dept. of Mines May 28, 1937.
 Record to RCT from D. G. Courtney 2-1-38.

	Top.	Bottom.
Coal, black, soft (Mapletown) Sewickley	839	
Coal, black, soft, Pittsburgh	926	
Sand, Dunkard	1531	
Sand, Salt	1805	
Sand, gray, soft, Big Injun (oil and salt water)	2215	2332
Total depth		2332