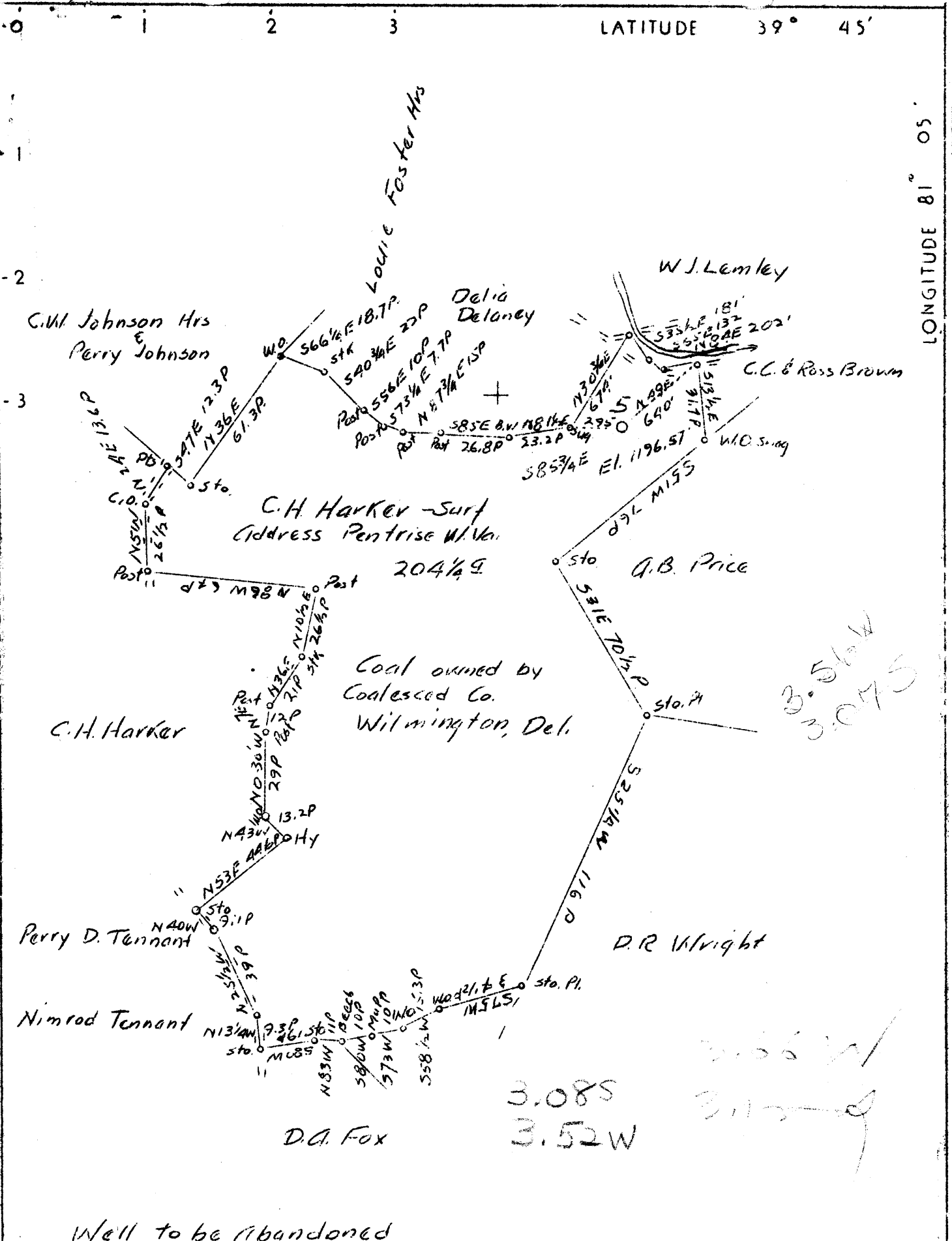


LATITUDE 39° 45'

LONGITUDE 81° 05'



Company South Penn Oil Co.
 Address 411-7th Ave. Pittsburgh, Pa.
 Farm Etta Core
 Tract Acres 209 Lease No. 13042
 Well(Farm) No. 5 Serial No. 715
 Quadrangle Blacksville
 County Monongalia
 District Clay
 Engineer E. C. Tabler
 Engineer's Registration No. _____
 File No. _____ Drawing No. _____
 Date 2-11-37 Scale 1" = 800'

STATE OF WEST VIRGINIA
 Department of Mines
 OIL AND GAS DIVISION
 Charleston

WELL LOCATION MAP
 File No. MON-151 A

+ Denotes location of well on U. S. Topographic Maps, scale 1 to 62,500 latitude and longitude lines being represented by border lines as shown.

— Denotes one inch spaces on border line of original tracing.

1574

Latitude 39 45

Longitude 81 05



$$\frac{2.245}{0.7375} = 3.04$$

$$\frac{2.610}{0.7375} = 3.54$$

Well to be abandoned
 South Penn Oil Co



Not to be changed

Company	<i>South Run Oil Co</i>
Address	<i>411 1/2 W. 4th St. Pittsburgh, Pa</i>
Phone	<i>5116 C-2</i>
Truck	<i>1 - Make <i>209</i> - Load No. <i>12002</i></i>
Well (Form) No.	<i>E</i>
County	<i>Wetzel</i>
Locality	<i>Postville</i>

STATE OF WEST VIRGINIA
 DEPARTMENT OF MINES
 OIL AND GAS DIVISION
 CREATION
WELL LOCATION MAP
 FILE NO. *5521-157 E*

© Denotes location of well on United States

WEST VIRGINIA DEPARTMENT OF MINES
OIL AND GAS DIVISION

237

WELL RECORD

Permit No. **AAON-151-A**

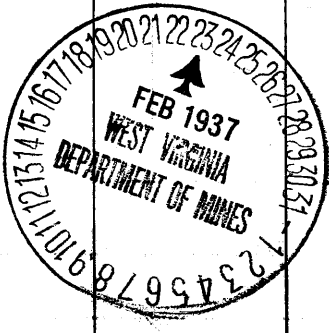
Oil or Gas Well **GAS**
(Kind)

Company **SOUTH PENN OIL COMPANY**
 Address **C. of C. Bldg., Pittsburgh, Pa.**
 Farm **Etta Core** Acres **209**
 Location (waters) **-----**
 Well No. **5** Elev. **1196.57'**
 District **Clay** County **Monongalia**
 The surface of tract is owned in fee by **C. H. Barker**
 Address **Pentress, W. Va.**
 Mineral rights are owned by **W. L. Tennant et al**
 Address **Mooreville, W. Va.**
 Drilling commenced **Nov. 14, 1916. DD. Apr. 2, 1920**
 Drilling completed **Jan. 13, 1917. DD. July 22, 1920**
 Date shot **-** Depth of shot **-**
 Open Flow /10ths Water in **See below** Inch
 /10ths Merc. in **---** Inch
 Volume **---** Cu. Ft.
 Rock Pressure **--** lbs. **--** hrs.
 Oil **--** bbls., 1st 24 hrs.
 Fresh water **--** feet **--** feet
 Salt water **--** feet **--** feet

Casing and Tubing	Used in Drilling	Left in Well	Packers
Size			Kind of Packer -
16			
13			
10	772' 5"		Size of -
8 1/4	1661' 2"		
6 5/8	1968'		Depth set -
5 3/16	2880'		
3			Perf. top -
2			Perf. bottom -
Liners Used	4" X 4 1/2"		Perf. top -
			Perf. bottom -

CASING CEMENTED **-** SIZE **-** No. FT. **-** Date **-**
 COAL WAS ENCOUNTERED AT **748** FEET **84** INCHES
- FEET **-** INCHES **-** FEET **-** INCHES
- FEET **-** INCHES **-** FEET **-** INCHES

Formation	Color	Hard or Soft	Top	Bottom	Oil Gas or Water	Depth Found	Remarks
Pgh. Coal			748	755			
Little Dunkard Sand			1077	1104			
Big Dunkard Sand			1280	1322			
Gas Sand			1509	1538			
1st Salt Sand			1557	1749			
Maxon Sand			1889	1905			
Little Lime			1922	1937			
Pencil Cave			1937	1942			
Big Lime			1942	2002			
Big Injun Sand			2002				
					Gas	2019	215 Mct
					Gas	2023	26/10W. 2" 5/10W. 6-5/8"
Total Depth				2023			~1007 Mct
Drilling Deeper commenced				2023			
Squaw Sand			2285	2320			
Gantz Sand			2515	2533			
Fifty Foot Sand			2610	2647			
Thirty Foot Sand			2765	2800			
Gordon Stray Sand			2877	2892			
Gordon Sand			2950	2975			
Fourth Sand			2990	3055			
Fifth Sand			3157	3171			
					Oil	3160	
Total Depth				3188			



Formation	Color	Hard or Soft	Top	Bottom	Oil, Gas or Water	Depth Found	Remarks
<p><i>1000</i></p> <p><i>1000</i></p>							

Date **February 19,** 19 **37**

APPROVED **SOUTH PENN OIL COMPANY,** Owner

By *Edon Young* Land Agent.
(Title)

Clay District, Monongalia County, W. Va.
 By South Penn Oil Co., O. of O. Bldg., Pittsburgh, Pa.
 On 209 acres, surface owned by C. H. Barker, Pentrest, W. Va.,
 and minerals by W. L. Tennant et al., Macreenville, W. Va.
 Elevation, 1196.57' L.
 Drilling commenced Nov. 14, 1916; completed, Jan. 13, 1917.
 Drilled deeper: commenced, Apr. 2, 1920; completed, July 22, 1920.
 10" casing, 772' 5"; 8 1/4", 1661' 2"; 6 3/8", 1965'; 5 1/2", 2000'; 4 1/2" liner.
 Coal was encountered at 748-755'.
 Abandonment reported to Dept. of Mines Feb. 19, 1937.
 Gas well. Record to ROT from D. G. Courtney (Dept. of Mines) 5-5-37.

	Top.	Bottom.
Pittsburgh Coal	748	- 755
Little Dunkard Sand	1077	- 1104
Big Dunkard Sand	1280	- 1322
Gas Sand	1509	- 1538
1st Salt Sand	1557	- 1749
Marion Sand	1889	- 1905
Little Lime	1922	- 1937
Pencil Cave	1937	- 1942
Big Lime	1942	- 2002
Big Injun Sand (gas, 2019', 26/10 w. 2"; gas, 2023', 5/10 w. in 6 3/8")	2002	
Total depth		2023
DRILLED DEEPER:		
Drilling deeper commenced		2023
Squaw Sand	2285	- 2320
Gants Sand	2415	- 2533
50-Ft. Sand	2610	- 2647
30-Ft. Sand	2765	- 2800
Gordon Stray Sand	2877	- 2892
Gordon Sand	2950	- 2975
Fourth Sand	2990	- 3055
Fifth Sand (oil, 3160') S	3157	- 3171
Total depth		3188

