

LATITUDE 39° 40' 00"

75'

80° 10' 00"

LONGITUDE

7'5 OGIS topo location

7.5' loc	<u>0.545</u>	15' loc	<u>0.545</u>
	<u>0.82W</u>	(calc.)	<u>0.82W</u>

Company \_\_\_\_\_

Farm \_\_\_\_\_

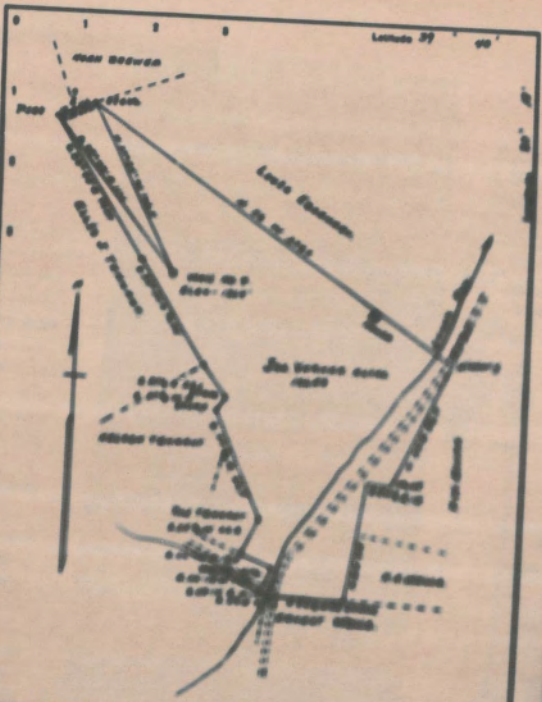
Quad Blacksville (Bkulle w)

County Monongahela

District Clay

WELL LOCATION MAP

File No. 061-146A



County \_\_\_\_\_  
 State \_\_\_\_\_  
 Town \_\_\_\_\_  
 Sec. \_\_\_\_\_  
 Range \_\_\_\_\_  
 Township \_\_\_\_\_  
 Block \_\_\_\_\_  
 Section \_\_\_\_\_

STATE OF MISSISSIPPI  
 DEPARTMENT OF REVENUE  
 OFFICE OF THE COMMISSIONER  
**WELL LOCATION MAP**  
 No. \_\_\_\_\_

Block \_\_\_\_\_  
 Section \_\_\_\_\_

WEST VIRGINIA DEPARTMENT OF MINES

OIL AND GAS DIVISION

PRELIMINARY DATA SHEET NO. 1

File No. \_\_\_\_\_ Well No. 4

Dunn Mar Oil & Gas Company of Waynesburg, Pa.

on the Jos. Varner Holze Acres

containing 136 acres located Way

State, in Monongalia County, West Virginia

The surface of the above tract is owned in fee by Jos. Varner Holze

of Waynesburg, Pa. address, and the mineral rights are owned by

Jos. Varner Holze of Waynesburg, Pa.

The oil and gas privileges are held under lease by the above named company, and this well is drilled under grant

No. \_\_\_\_\_ issued by the West Virginia Department of Mines, Oil and Gas Division

\_\_\_\_\_

Direction of surface at top of well \_\_\_\_\_ 1364 \_\_\_\_\_ 200

The number of feet of the differential casing used in the well

2000 \_\_\_\_\_ 2000000 \_\_\_\_\_

2000 \_\_\_\_\_ 5 3/8 \_\_\_\_\_ 2000 \_\_\_\_\_ 2000 \_\_\_\_\_

\_\_\_\_\_ 2000 \_\_\_\_\_ 2000 \_\_\_\_\_ 2000 \_\_\_\_\_

\_\_\_\_\_ 2000 \_\_\_\_\_ 2000 \_\_\_\_\_ 2000 \_\_\_\_\_

\_\_\_\_\_ 2000 \_\_\_\_\_ 2000 \_\_\_\_\_ 2000 \_\_\_\_\_

\_\_\_\_\_ 2000 \_\_\_\_\_ 2000 \_\_\_\_\_ 2000 \_\_\_\_\_

\_\_\_\_\_ 2000 \_\_\_\_\_ 2000 \_\_\_\_\_ 2000 \_\_\_\_\_

\_\_\_\_\_ 2000 \_\_\_\_\_ 2000 \_\_\_\_\_ 2000 \_\_\_\_\_

\_\_\_\_\_ 2000 \_\_\_\_\_ 2000 \_\_\_\_\_ 2000 \_\_\_\_\_

\_\_\_\_\_ 2000 \_\_\_\_\_ 2000 \_\_\_\_\_ 2000 \_\_\_\_\_

\_\_\_\_\_ 2000 \_\_\_\_\_ 2000 \_\_\_\_\_ 2000 \_\_\_\_\_

\_\_\_\_\_ 2000 \_\_\_\_\_ 2000 \_\_\_\_\_ 2000 \_\_\_\_\_

\_\_\_\_\_ 2000 \_\_\_\_\_ 2000 \_\_\_\_\_ 2000 \_\_\_\_\_

\_\_\_\_\_ 2000 \_\_\_\_\_ 2000 \_\_\_\_\_ 2000 \_\_\_\_\_

Sub. Oct. 27th, 1936

\_\_\_\_\_ Dunn Mar Oil & Gas Co. \_\_\_\_\_





Oil

WELL RECORD 61-30146  
COMPANY

Record of Well No. 4 on J.H. McDermott Oil Farm 127 Acres  
Jakes Run on Joseph Varner Weirs Field Clay District Monongalia County W. Va. State  
 Rig Commenced 19 Completed 19  
 Drilling Commenced 19 Completed 19  
 Cost Per Foot Contractor Address  
 Drillers Names

CONDUCTOR AND CASING USED IN DRILLING

Conductor 13 inch 10 inch 8 1-4 inch 6 5-8 inch 5 3-16 inch 4 inch 3 inch 2 inch

CONDUCTOR AND CASING LEFT IN WELL

Conductor 13 inch 10 inch 8 3-4 inch 6 5-8 inch 5 3-16 inch 4 inch 3 inch 2 inch

Formation	Top	Bottom	Thickness	Formation	Top	Bottom	Thickness
GRAVEL OR QUICK SAND				FORMATION			
FIRST WATER				SQUAW			
BLUFF SAND				BEREA			
NATIVE COAL				GANTZ			
WBG. COAL				FIFTY FOOT			
MAPLE COAL				THIRTY FOOT			
PGH. COAL	<u>854</u>			GORDON STRAY			
MURPHY SAND				GORDON			
LITTLE DKRD.				FOURTH			
BIG DKRD.				FIFTH			
GAS SAND				BAYARD			
FIRST SALT SAND				ELIZABETH			
SECOND SALT SAND							
LITTLE LIME							
PENCIL CAVE							
BIG LIME							
BIG INJUN							
<u>Oil</u>	<u>2263</u>			TOTAL DEPTH	<u>2275</u>		

Gas Test Open  
 Minute Test  
 Oil Production 50 bbls, Daily  
 Well Tubed with 2257 Tubing Packer Set in 6 Ft. working bbl. 12 Sand, Top of Packer, Anchor, Perforation at, 2269 Perforation Air Hole 2263

SHOT RECORD

Date	Amount	Size of Shell	Top	Bottom	Oil on Shot	Results
No date	10 qts.					
" "	10 "					
May 12 1899	20	3 1/2 x 8 1/2	2262	2270-6		Made 6 bbls,
Nov. 26 1901	30	4 " 11	2261	2272		" 5 "
Apr. 1906	70	10 qt. pigs.		2271		

REMARKS: