

LATITUDE 39° 45' 00"

79° 55' 00"

LONGITUDE

7.5'
+

7.5 OGIS topo location

7.5' loc 2.309
1.41w

15' loc 2.309
(calc.) 1.41w

Company _____

Farm _____

Quad Morgantown North (Morgantown NW)

County Monongahela

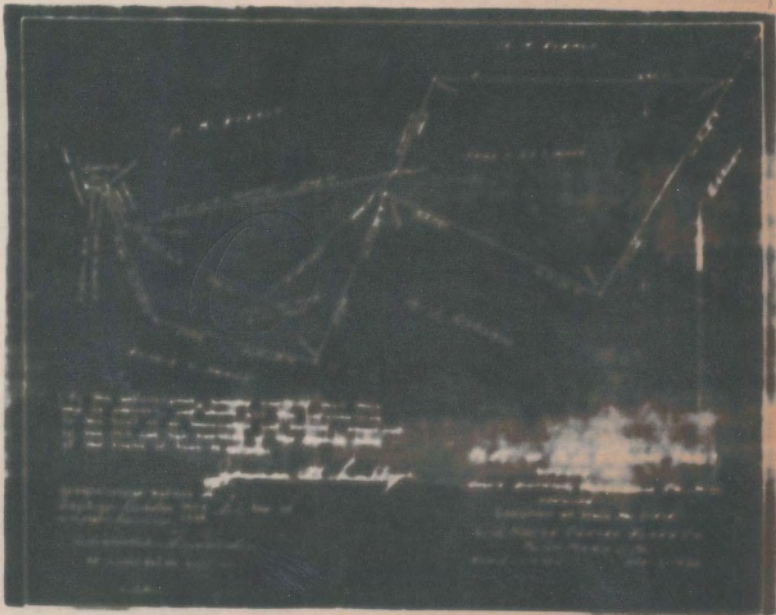
District Cass

WELL LOCATION MAP

File No. 061-141A

Eventy

Eventy



Cass District, Monongalia County, W. Va.
 By L. J. House Convex Glass Co., Point Marion, Pa.
 On 6¹/₄ acres, surface and mineral rights owned by M. J. Garlow,
 Maidsville, W. Va.
 Elevation, 1100.6' L.
 13" conductor, 14"; 5" casing, 1260'; 2" tubing, 1408'.
 No coal was encountered.
 Abandonment reported to Dept. of Mines April 10, 1936.
 G. E. VanVoorhis, Field Supt., Dilliner, Pa.
 Well was not shot.
 Salt water at 915'.
 Gas well.

MON-141-A

	Top.	Bottom.	Thickness.
Conductor	0	14	14
Murphy Sand	50	70	20
Little Dunkard Sand	326	356	30
Big Dunkard Sand	474	538	64
Freeport Coal	538	541	3
Gas Sand	630	680	50
Salt Sand (water at 915')	845	980	135
Little Lime	1140	1155	15
Pencil Cave	1155	1190	35
Big Lime	1190	1277	87
Big Injun Sand (gas, 1380 and 1403')	1277	1408	131
Total depth		1408	

Farm _____

WELL LOCATION MAP

File No. 0661-141A

Quad Morgantown North (Nighthollow)

County Monongahela

District Cass

WEST VIRGINIA DEPARTMENT OF MINES

OIL AND GAS DIVISION

PRELIMINARY DATA SHEET NO. 1

File No. _____ Vol. No. 11518L. J. Bruce Seams Class Company of Point Marion, Pa._____ as the H. J. Surlew _____containing 14 _____Coal District in Monongalia County, West VirginiaThe application for this document is granted to the by H. J. Surlewof Midwayville, W. Va. _____ address, and the adjacent rights are owned byH. J. Surlew of Midwayville, W. Va.

The oil and gas privileges are held under lease by the above named company, and this well is drilled under permit

No. 285 in effect _____ issued by the West Virginia Department of Mines, Oil and Gas Division

Direction of surface at top of well _____ 1100.0 _____ Open

The number of feet of the different steel casings used in the well _____

14 _____ feet 12 _____ feet. Wood casing _____1000 _____ feet 2 _____ feet, top _____ feet _____ steel top _____1400 _____ feet 2 _____ feet, top _____ feet _____ steel top _____

_____ feet _____ feet, top _____ feet _____ steel top _____

_____ _____ feet _____ feet, top _____ feet _____ steel top _____

_____ _____ feet _____ feet, top _____ feet _____ steel top _____

_____ _____ feet _____ feet, top _____ feet _____ steel top _____

_____ _____ feet _____ feet, top _____ feet _____ steel top _____

_____ _____ feet _____ feet, top _____ feet _____ steel top _____

Steel was connected at 2000 _____ feet, with case _____ inches, and at _____

Case diameter _____ inches, and at _____ feet diameter _____ inches.

Meters were used as follows (give details) _____

April 10, 1929
