

LATITUDE 39° 45' 00"

11° 05' 21.08"

LONGITUDE

75'

7'5 OGIS topo location

7.5' loc 2.355  
1.73W

15' loc 2.355  
(calc.) 3.95W

Company \_\_\_\_\_

Farm \_\_\_\_\_

Quad Blacksville (NW)

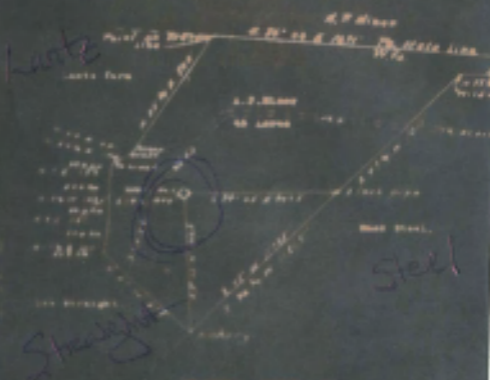
County Monongahela

District Clay

WELL LOCATION MAP

File No. 061-119A

Plan showing the location of Well No. 1. of John L. Deane, et al. of Hampshire, West Virginia, to be obtained of the A.P. Moore Farm, consisting of 48 Acres, located in Clay District, Booneville County, West Virginia.



**DEPONENT'S DECLARATION**

I, the undersigned hereby certify that this map is correct and shows all the information to the best of my knowledge and belief, required by the act and the location of the Well No. 1 of West Virginia.

*[Signature]*  
 DEPOSED

I acknowledge before me a Notary Public, in and for Booneville County, West Virginia, this 1st day of December, 1944.

My commission expires  
*[Signature]*

*[Signature]*  
 Notary Public

WEST VIRGINIA DEPARTMENT OF MINES

OIL AND GAS DIVISION

PRELIMINARY DATA SHEET NO. 1

File No. Herschel Walker Well No. One  
Blacksville WVA Company of A. P. Minor Farm  
 on the \_\_\_\_\_

containing 3 acres. Location Clay  
 situated in Waynesburg County, West Virginia

The gas and oil above tract is owned in fee by G. P. Johnson  
 of Blacksville WVA and the mineral rights are owned by  
A. P. Minor of Dicksville

All surface rights are held under lease by the above named company, and this well is drilled under permit  
1, 1935 issued by the West Virginia Department of Mines, Oil and Gas Division

Elevation of surface at top of well 1093' feet  
Barometric

The number of sizes of the different steel casings used in the well.

feet	size	Weight	conductor
<u>2142</u>	<u>2</u>	<u>tubing</u>	steel casing
<u>2827</u>	<u>5 3/4</u>		steel casing
			steel casing

\_\_\_\_\_ inches of \_\_\_\_\_ size, set at \_\_\_\_\_ feet to \_\_\_\_\_ feet.  
 \_\_\_\_\_ inches of \_\_\_\_\_ size, set at \_\_\_\_\_ feet to \_\_\_\_\_ feet.  
 \_\_\_\_\_ in casing perforated at \_\_\_\_\_ feet to \_\_\_\_\_ feet.  
 \_\_\_\_\_ in casing perforated at \_\_\_\_\_ feet to \_\_\_\_\_ feet.  
 Casing was cemented at 718 feet, thickness 6 ft inches, and at \_\_\_\_\_ feet, thickness \_\_\_\_\_ inches.

Lines were run as follows: (Give details)

May 20, 1935  
 Date

Approved Herschel Walker Owner

*Howard Walker*  
*Blacksville, N.C.*  
 Well No. *One*

*Completed 12 days and 2011 ft.*  
*Drilling 2011 ft.*  
 COMPLETION DATA SHEET  
 No. 2  
 FORMATION RECORD

Time	Color	Quantity	Sp. Gr. or Vol. %	Top	Bottom	Thickness	Test	Remarks
<i>Water to</i>				<i>636</i>	<i>685</i>	<i>9 ft</i>		
<i>Coal</i>				<i>920</i>	<i>950</i>	<i>30</i>		
<i>Red sand</i>				<i>1150</i>	<i>1210</i>	<i>60 ft</i>		
<i>Red sand</i>				<i>1340</i>	<i>1375</i>	<i>35</i>		
<i>Yellow</i>				<i>1485</i>	<i>1670</i>	<i>185</i>		
<i>Light brown</i>				<i>1850</i>	<i>1860</i>	<i>10</i>		
<i>Blue</i>				<i>1876</i>	<i>1940</i>	<i>64</i>		
<i>Blue</i>				<i>1940</i>	<i>2170</i>	<i>230</i>		
<i>Yellow</i>				<i>2580</i>	<i>2620</i>	<i>40</i>		
<i>Blue</i>				<i>2640</i>	<i>2660</i>	<i>20</i>		
<i>Yellow</i>				<i>2880</i>	<i>2900</i>	<i>20</i>		
<i>Yellow</i>				<i>2980</i>	<i>2975</i>	<i>25</i>		
<i>Red</i>				<i>3070</i>	<i>3080</i>	<i>11</i>		
<i>Red</i>			<i>Gravel</i>	<i>3070</i>				
								<i>Total Depth</i> <i>3081</i>

Well was set at \_\_\_\_\_ feet, well was shut at \_\_\_\_\_ feet

First water at \_\_\_\_\_ feet, fresh water at \_\_\_\_\_ feet

Well was \_\_\_\_\_ (working) \_\_\_\_\_ (idle)

\_\_\_\_\_ Date \_\_\_\_\_ Approved \_\_\_\_\_

NOTE: All bottom formations must be noted as indicated above and all barometer and all test run depths must be recorded under the proper geological names in the column or well, as any such failure seriously tend to the discredit for such wells.

*Herschel Walker*  
*Blacksville*  
 Well No. *One* Part *A Minor*

OIL OR GAS WELL *Gas*

COMPLETION DATA SHEET  
 No. 2  
 FORMATION RECORD

Name	Color	Character	Oil, Gas or Water	Top	Bottom	Thickness	Total Depth	Remarks
<i>Hydrat</i>				718	724	6ft		
<i>Big Sand</i>				1438	2178	240		
<i>Big Sand</i>				3137	3142	5ft.		
		<i>5th sand</i>	<i>offtop</i>	3030	3055			
		<i>Fourth sand</i>	"	2960	2980			
		<i>Thirty-foot "</i>	"	2720	2740			
		<i>Fifty foot sand "</i>	"	2660	2700			
		<i>Big Inpin (see above)</i>						
		<i>Big Lime</i>		1956	2000			
		<i>Little Lime</i>		1930	1940			
		<i>Salt Sand</i>		1865	1750			
		<i>Gas Sand</i>		1420	1455			
		<i>Big Dumbard</i>		1230	1290			
		<i>Little Dumbard</i>		1000	1030			
		<i>Pittsburg local (see above)</i>						

*Total Depth*  
*3142*

shot Well was not shot at \_\_\_\_\_ daily well was shot at \_\_\_\_\_ feet  
 Salt Fresh water at \_\_\_\_\_ salt Salty fresh water at \_\_\_\_\_ feet  
 Well was producing \_\_\_\_\_ lbs. per day  
 Date \_\_\_\_\_ Approved *Herschel Walker*  
 Owner

NOTE: All bottom formations must be noted as indicated above and all top-cuts and oil and gas shows must be recorded under their proper production column in the district or well or gas card.

