

LATITUDE

39°45'

88° 50'

LONGITUDE

7.5° +

7.5 OGIS topo location

7.5' loc 2.205
1.49W

15' loc 2.209
(calc.) 1.49W

A 107 on Equitable

Company _____

Farm _____

Quad Osage _____

County Monongalia _____

District Clay _____

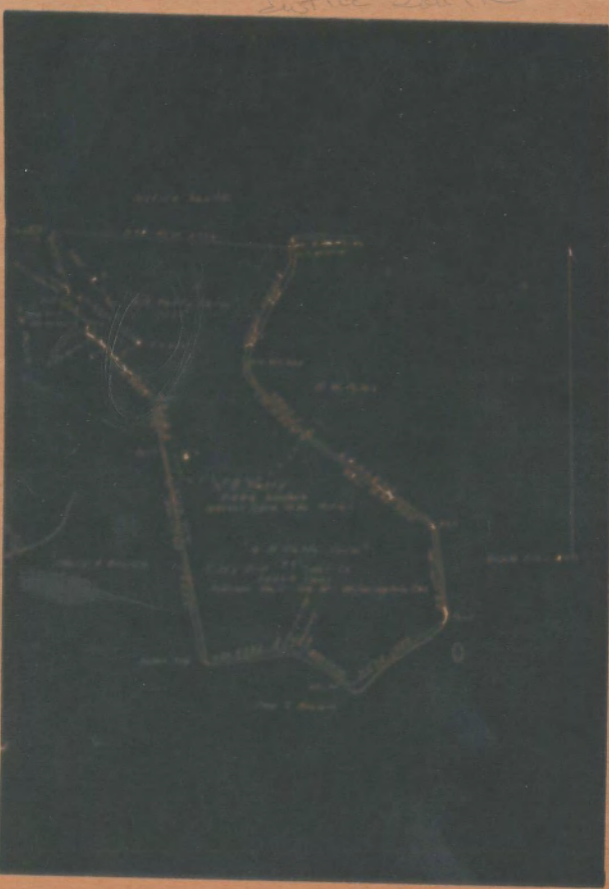
(BICKSVILLE NC)

WELL LOCATION MAP

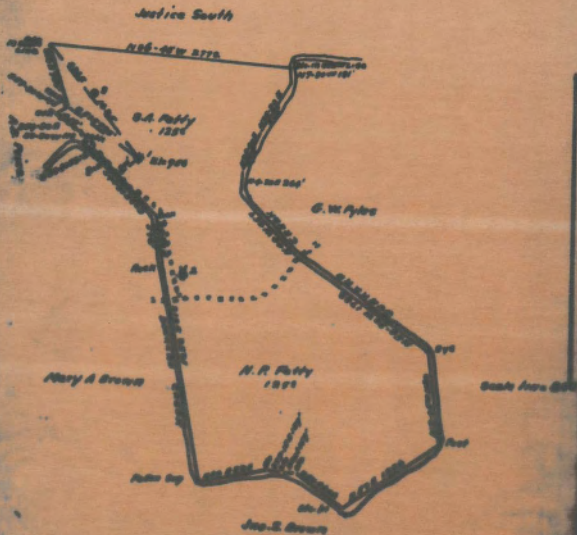
File No. 061-95A

⁰⁶¹⁻
was 07A

2035 100 2000



S. A. Petty well #1 - Clay District, Monongalia County, West Virginia.



WELL LOG

I, the undersigned, hereby certify that this map is true and correct and shows all the information to the best of my knowledge and belief as required by the oil and gas section of the mining laws of West Virginia.

John E. Brown

Subscribed before me a Notary Public this 6th day of May, 1921.
My commission expires March 20, 1922.

John E. Brown

Clay District, Monongalia County, W. Va.

By South Penn Oil Co., Chamber of Commerce Bldg., Pittsburgh, Pa.

On 125 acres, surface and mineral rights owned by W. S. Fetty et al.,
Core, W. Va.

Elevation, 956' L.

45' conductor; 10" casing, 514'; 8", 1347' (pulled); 6-5/8",
1750'; 5-3/16", 1789' 8".

Coal was encountered at 411-418 and 494-501'.

Abandonment reported to Dept. of Mines Oct. 26, 1934.

Well was shot in Big Injun Sand June 11, 1934, with 10 qts.

Salt water at 1884'.

Producing hole.

	Top.	Bottom.
Mapletown (Sewickley) Coal	411	- 418
Pittsburgh Coal	494	- 501
Dunkard Sand	950	- 965
Salt Sand	1330	- 1500 †
Big Injun Sand (gas, 1851')	1761	- 1914
(first pay oil and water, 1884')		
Gantz Sand	2363	- 2386
50-Ft. Sand	2405	- 2448
Stray Sand	2620	- 2638
Fourth Sand	2783	- 2788
Fifth Sand (first oil pay, 2913')	2911	- 2923
Total depth		2945

- Clay District, Monongalia County, W. Va.
 On 125 acres; surface owned by H. S. Fetty, Core, W. Va., and
 mineral rights, by C. E. Fetty, Mt. Morris, Pa.
 South Penn Oil Co.
 Elevation, 956' L.
 45' wood conductor; 10" casing, 514'; 8 $\frac{1}{2}$ " 1347'; 6-5/8", 1750';
 5", 1934'; 4", 357'; 2", 1775'. (5-3/16", 1789' 8") 1934' rept.
 Abandonment reported to Dept. of Mines, May 8, 1931.
 Abandonment reported to Dept. of Mines, Oct. 26, 1934.
 Shot in Big Injun 6-11-34, 10 qts. Top. Bottom.

Mapletown Coal	411 - 418
Pittsburgh Coal	494 - 501
Dunkard Sand	950 - 965
Big Injun Sand (gas, 1851'; oil and water, 1884')	1761 - 1914
Gants Sand	2363 - 2386
50-Ft. Sand	2405 - 2448
Stray Sand	2620 - 2638
4th Sand	2783 - 2788
5th Sand (oil, 2913')	2911 - 2923
Total depth	2945

27-A
 Now 95A

WEST VIRGINIA DEPARTMENT OF MINES

OIL AND GAS DIVISION

PRELIMINARY DATA SHEET NO. 1

File No. _____ Well No. 1SOUTH FERN OIL COMPANY Successors of Chamber of Commerce Building
Pittsburgh, Pa. on the S. A. Petty Farmcontaining 125 acres. Location
Clay District in Monongalia County, West VirginiaThe surface of the above tract is owned in fee by N. S. Petty et al.,
of Core, W. Va. address, and the mineral rights are owned by
N. S. Petty et al of Core, W. Va.The oil and gas privileges are held under lease by the above named company, and this well is drilled under permit
No. _____ issued by the West Virginia Department of Mines, Oil and Gas DivisionElevation of surface at top of well, 956' feet North
Meridian.

The number of feet of the different sized casings used in the well.

feet	also, size	also, size	also, size	also, size
<u>45</u>	feet			also, Wood conductor.
<u>514</u>	feet	<u>10"</u>	also, size <u>1700' 8"</u>	feet <u>8-5/16"</u> steel cas.
<u>1547 (Pulled)</u>	feet	<u>8 1/2"</u>	also, size	feet steel cas.
<u>1750</u>	feet	<u>6-5/8"</u>	also, size	feet steel cas.
	gopher of		also, size of	
	gopher of		also, size of	
	in casing perforated at		feet to	feet
	in casing perforated at		feet to	feet

Coal was encountered at 411 feet; thickness 64 inches, and at 494
feet; thickness 64 inches; and at _____ feet; thickness _____ inches.

Lithom were used as follows: (Give details)

October 26, 1936.

Date.

Approved: _____ SOUTH FERN OIL COMPANY _____ Comm.

By: Chas. Spang (Signature) Lead Eng.

10/28/36

SCOTT PERRY CO.
 COMPANY OF COMMERCE BLDG.
 PITTSBURGH, Pa.

COMPLETION DATA SHEET
 NO. 2
 FORMATION RECORD

Well No. 1, - S. A. Petty Pass.

Zone	Color	Character	Oil, Gas or Water	Yds	Bottom	Thickness	Total Depth	Remarks
Maplestone Coal				411	418			
Pittsburgh Coal				494	911			
Beahrd Sand				500	908			
Salt Sand				1200	1200(1)			
Big Injan Sand			Gas	1741	1914			
1st Pay Oil & Water				1804				
Greys Sand				2300	2300			
Wifty Post Sand				2400	2400			
Stony Sand				2420	2420			
Fourth Sand				2700	2700			
Fifth Sand				2911	2911			
First Pay			Oil	2915				
Total Depth							2915	

10/25/24

Well was completed at 2915 ft. 8/11/24 - 10 ft. well was shut in.

First water at 1804 ft. Second water at _____ ft.

Producing _____ bbl. per day.
 Date October 20, 1924.
 Approved By _____ Lead Dept.

NOTE: All bottom formations must be noted on additional sheets and all formations not oil and gas must be recorded under their proper geological name in the column as well as any local names commonly used in the district for such rocks.

WEST VIRGINIA DEPARTMENT OF MINES

Oil and Gas Section

PRELIMINARY DATA SHEET NO. 1

File No. _____ Well No. 1
SHAWNEE OIL Company, of P. O. Box 1000, Pittsburgh, Pa.
 on the S. A. Ferry Farm

containing 1000 acres located _____
Shawnee District, in Monongalia County, West Virginia.

The surface of this site tract is owned in fee by H. H. Ferry
 of Shawnee, W. Va. address, and the mineral rights are owned by
G. W. Harty of W. Va.

The oil and gas properties are held under lease by the above named company, and this well is drilled under
 permit No. _____ issued by the West Virginia Department of Mines, Oil and Gas Section,
 on _____

Elevation of surface of top of well _____ 200' _____ Spits
Shawnee

The number of feet of thickness of each casing used in the well _____

_____	_____	_____	_____	_____	_____	_____	_____	_____
<u>526</u>	_____	<u>10"</u>	_____	<u>1004</u>	_____	<u>8"</u>	_____	_____
<u>1247</u>	_____	<u>6 1/2"</u>	_____	<u>1077</u>	_____	<u>6"</u>	_____	_____
<u>1700</u>	_____	<u>6 1/2"</u>	_____	<u>1070</u>	_____	<u>8"</u>	_____	_____
_____	_____	_____	_____	_____	_____	_____	_____	_____
_____	_____	_____	_____	_____	_____	_____	_____	_____
_____	_____	_____	_____	_____	_____	_____	_____	_____
_____	_____	_____	_____	_____	_____	_____	_____	_____

Coal was encountered _____ 60 feet, thickness _____ 60 inches, and at _____
 feet; thickness _____ 100 inches, and at _____ feet; thickness _____ inches

_____ 1000 _____

Approved: SHAWNEE OIL COMPANY _____
 By [Signature] _____
 (Title)

COMPLETION DATA SHEET
NO. 2
FORMATION RECORD

W. S. BRONER 1908

Address

Pittsburgh, Pa.

Zone	Color	Character	Oil, Gas or Water	Top	Bottom	Thickness	Total Depth	Remarks
Conductor					48			
Highland Coal				411	418			
Pittsburgh Coal				484	501			
Duquesne Sand				900	940			
Big Injun				1701	1814			
			Gas	1881				
			Oil & Water	1884				
Concho Sand				2005	2006			
Fifty Foot Sand				2405	2440			
Grey Sand				2600	2600			
Fourth Sand				2705	2705			
Fifth Sand				2811	2825			
			Oil	2815				
TOTAL DEPTH							2840	

Well was set at _____ feet; well was shut at _____ feet

Gas flow rate at _____ psi; fresh water at _____ feet

Well was _____

W. S. BRONER
Approved by _____

NOTE: All entries hereafter must be made as indicated above unless otherwise set of and any work must be recorded with this report. This report should be filed in the office of the State Geologist.

AFFIDAVIT IN TRIPPLICATE TO TIME AND MANNER OF PLUGGING AND FILLING WELL

(Revised by Stephen S. Arnold & Company 60 of the Code)

**WEST VIRGINIA DEPARTMENT OF MINES
OIL AND GAS DIVISION**

June 1935

<u>Clay District Coal Co.,</u>	<u>SOUTH FURN OIL COMPANY</u>
<u>Wilmington, Kentucky.</u>	<u>Clay District Coal Co.,</u>
	<u>Wilmington, Ky.</u>
<u>DATE COMPLETED OR ORDERED</u>	<u>FEBRUARY 18, 1935</u>
	<u>WELL AND LOCATION</u>
	<u>Clay</u> <u>County</u>
	<u>Monongalia</u> <u>County</u>
	<u>Well No. 1</u>
	<u>G. A. FORTY</u> <u>Owner</u>

BEFORE ME, the undersigned authority, on this _____ day of _____, 1935, personally appeared _____, known to me to be the person whose name is subscribed to the foregoing petition, and acknowledged to me that he executed the same for the purposes and consideration therein expressed.

AFFIDAVIT

STATE OF WEST VIRGINIA,

County of Wayne

J. C. Knight

being first duly sworn according to law depose and say that they are experienced in the work of plugging and filling oil and gas wells and were employed by SOUTH FURN OIL COMPANY and participated in the work of plugging and filling the above well, that such well was abandoned on the 18th day of February, 1935, and that the well was plugged and filled in the following manner:

Reason to which well was plugged:

Total depth 2225'. Previously plugged to 1225'. Packed 6-2 1/2" casing
1225' - 1240' Filled with cement-sand material 150'.
1240' - 1255' Filled with cement-sand material 150'.
1255' - 1270' Filled with cement-sand material 150'.
1270' - 1285' Filled with cement-sand material 150'.
1285' - 1300' Filled with cement-sand material 150'.
1300' - 1315' Filled with cement-sand material 150'.
1315' - 1330' Filled with cement-sand material 150'.
1330' - 1345' Filled with cement-sand material 150'.
1345' - 1360' Filled with cement-sand material 150'.
1360' - 1375' Filled with cement-sand material 150'.
1375' - 1390' Filled with cement-sand material 150'.
1390' - 1405' Filled with cement-sand material 150'.
1405' - 1420' Filled with cement-sand material 150'.
1420' - 1435' Filled with cement-sand material 150'.
1435' - 1450' Filled with cement-sand material 150'.
1450' - 1465' Filled with cement-sand material 150'.
1465' - 1480' Filled with cement-sand material 150'.
1480' - 1495' Filled with cement-sand material 150'.
1495' - 1510' Filled with cement-sand material 150'.
1510' - 1525' Filled with cement-sand material 150'.
1525' - 1540' Filled with cement-sand material 150'.
1540' - 1555' Filled with cement-sand material 150'.
1555' - 1570' Filled with cement-sand material 150'.
1570' - 1585' Filled with cement-sand material 150'.
1585' - 1600' Filled with cement-sand material 150'.
1600' - 1615' Filled with cement-sand material 150'.
1615' - 1630' Filled with cement-sand material 150'.
1630' - 1645' Filled with cement-sand material 150'.
1645' - 1660' Filled with cement-sand material 150'.
1660' - 1675' Filled with cement-sand material 150'.
1675' - 1690' Filled with cement-sand material 150'.
1690' - 1705' Filled with cement-sand material 150'.
1705' - 1720' Filled with cement-sand material 150'.
1720' - 1735' Filled with cement-sand material 150'.
1735' - 1750' Filled with cement-sand material 150'.
1750' - 1765' Filled with cement-sand material 150'.
1765' - 1780' Filled with cement-sand material 150'.
1780' - 1795' Filled with cement-sand material 150'.
1795' - 1810' Filled with cement-sand material 150'.
1810' - 1825' Filled with cement-sand material 150'.
1825' - 1840' Filled with cement-sand material 150'.
1840' - 1855' Filled with cement-sand material 150'.
1855' - 1870' Filled with cement-sand material 150'.
1870' - 1885' Filled with cement-sand material 150'.
1885' - 1900' Filled with cement-sand material 150'.
1900' - 1915' Filled with cement-sand material 150'.
1915' - 1930' Filled with cement-sand material 150'.
1930' - 1945' Filled with cement-sand material 150'.
1945' - 1960' Filled with cement-sand material 150'.
1960' - 1975' Filled with cement-sand material 150'.
1975' - 1990' Filled with cement-sand material 150'.
1990' - 2005' Filled with cement-sand material 150'.
2005' - 2020' Filled with cement-sand material 150'.
2020' - 2035' Filled with cement-sand material 150'.
2035' - 2050' Filled with cement-sand material 150'.
2050' - 2065' Filled with cement-sand material 150'.
2065' - 2080' Filled with cement-sand material 150'.
2080' - 2095' Filled with cement-sand material 150'.
2095' - 2110' Filled with cement-sand material 150'.
2110' - 2125' Filled with cement-sand material 150'.
2125' - 2140' Filled with cement-sand material 150'.
2140' - 2155' Filled with cement-sand material 150'.
2155' - 2170' Filled with cement-sand material 150'.
2170' - 2185' Filled with cement-sand material 150'.
2185' - 2200' Filled with cement-sand material 150'.
2200' - 2215' Filled with cement-sand material 150'.
2215' - 2225' Filled with cement-sand material 150'.
The pipe extended in about 425' - 525'. Filled with cement-sand material
up to surface.

Description of cement: Concrete cement created top 6" x 6", bottom
12" x 12", height above ground 40". Bearing the following investigation,
G. F. C. Co. No. 1 G. A. Forty. Aband. 1935.

And that the work of plugging and filling and well was completed on the 18th day of February,
1935.

And further deposes with me,

[Signature]

Sworn to and subscribed before me this 18 day of Feb. 1935
44611