

State of West Virginia
Department of Environmental Protection - Office of Oil and Gas
Well Operator's Report of Well Work

API 47 - 061 - 01875 County Monongalia District Battelle
Quad Wadestown Pad Name Phoenix Field/Pool Name _____
Farm name Phoenix Well Number 4H
Operator (as registered with the OOG) Northeast Natural Energy LLC
Address 707 Virginia St. E, Suite 1200 City Charleston State WV Zip 25301

As Drilled location NAD 83/UTM Attach an as-drilled plat, profile view, and deviation survey
Top hole Northing 4388192.3 Easting 562464.6
Landing Point of Curve Northing 4388188.6 Easting 562739.3
Bottom Hole Northing 4383542.7 Easting 565939.1

Elevation (ft) 1,503.5' GL Type of Well New Existing Type of Report Interim Final
Permit Type Deviated Horizontal Horizontal 6A Vertical Depth Type Deep Shallow
Type of Operation Convert Deepen Drill Plug Back Redrilling Rework Stimulate
Well Type Brine Disposal CBM Gas Oil Secondary Recovery Solution Mining Storage Other _____
Type of Completion Single Multiple Fluids Produced Brine Gas NGL Oil Other _____
Drilled with Cable Rotary

Drilling Media Surface hole Air Mud Fresh Water Intermediate hole Air Mud Fresh Water Brine
Production hole Air Mud Fresh Water Brine

Mud Type(s) and Additive(s)
SYNTHETIC BASED MUD FOR HORIZONTAL SECTION; BIO-BASE 365, CALCIUM CHLORIDE POWDER, G-Seal Plus, HRP, Lime, M-I WATE (BARITE), M-I-X II MEDIUM,
MEGADRIL P SYSTEM, MEGADRIL P SYSTEM RENTAL, MEGAMUL, SAFE-CARB 250, VERSATHIN HF, VERSAWET, VG-PLUS, VINSEAL MEDIUM, WALNUT NUT PLUG MEDIUM

Date permit issued 4/19/21 Date drilling commenced 12/27/2021 Date drilling ceased 3/9/2022
Date completion activities began 4/28/2022 Date completion activities ceased 5/30/2022
Verbal plugging (Y/N) _____ Date permission granted _____ Granted by _____

Please note: Operator is required to submit a plugging application within 5 days of verbal permission to plug

Freshwater depth(s) ft 1,240 Open mine(s) (Y/N) depths Y, Federal #2 @1,230
Salt water depth(s) ft 2,760 Void(s) encountered (Y/N) depths N
Coal depth(s) ft 1,230 Cavern(s) encountered (Y/N) depths N
Is coal being mined in area (Y/N) N

APPROVED

RECEIVED
Office of Oil and Gas

JAN 16 2024

WV Department of
Environmental Protection

Reviewed by:
[Signature]

1/31/2024

02/23/2024

API 47- 061 - 01875 Farm name Phoenix Well number 4H

| CASING STRINGS | Hole Size | Casing Size | Depth | New or Used | Grade wt/ft | Basket Depth(s) | Did cement circulate (Y/N) * Provide details below* |
|---------------------------|-----------|-------------|--------|-------------|-------------|-----------------|--|
| Conductor | 30" | 24" | 100' | N | | NA | Y |
| Surface | 17-1/2" | 13-3/8" | 1,592 | N | 54.5 | NA | Y, 19 bbl |
| Coal | | | | | | | |
| Intermediate 1 | 12-1/4" | 9-5/8" | 2,821 | N | 36 | NA | Y, 10 bbl |
| Intermediate 2 | | | | | | | |
| Intermediate 3 | | | | | | | |
| Production | 8-3/4" | 5-1/2" | 27,194 | N | 20 | NA | Y |
| Tubing | | | | | | | |
| Packer type and depth set | | | | | | | |

Comment Details _____

| CEMENT DATA | Class/Type of Cement | Number of Sacks | Slurry wt (ppg) | Yield (ft ³ /sks) | Volume (ft ³) | Cement Top (MD) | WOC (hrs) |
|----------------|----------------------|-----------------|-----------------|------------------------------|---------------------------|-----------------|-----------|
| Conductor | 4500 psi ready mix | | | | | CTS | 48 |
| Surface | Class A | 2395 | 15.6 | 1.19 | 2,845 | CTS | 8 |
| Coal | | | | | | | |
| Intermediate 1 | Class A | 905 | 15.6 | 1.19 | 1,075 | CTS | 8 |
| Intermediate 2 | | | | | | | |
| Intermediate 3 | | | | | | | |
| Production | 50:50 poz | 5055 | 14.5 | 1.16 | 5,854 | 2,192' | 48 |
| Tubing | | | | | | | |

Drillers TD (ft) 27,194' Loggers TD (ft) 27,187'
 Deepest formation penetrated Marcellus Plug back to (ft) MA
 Plug back procedure _____

Kick off depth (ft) 7,403'

Check all wireline logs run caliper density deviated/directional induction
 neutron resistivity gamma ray temperature sonic

Well cored Yes No Conventional Sidewall Were cuttings collected Yes No

DESCRIBE THE CENTRALIZER PLACEMENT USED FOR EACH CASING STRING _____

Surface: Bow spring centralizers every 3rd joint or approximately 120'
 Intermediate: Bow spring centralizers every 3rd joint or approximately 120'
 Production: Rigid body centralizers placed at a minimum of every other joint (~80') from TD to surface

WAS WELL COMPLETED AS SHOT HOLE Yes No DETAILS _____

WAS WELL COMPLETED OPEN HOLE? Yes No DETAILS _____

WERE TRACERS USED Yes No TYPE OF TRACER(S) USED _____

RECEIVED
Office of Oil and Gas

JAN 16 2024

Phoenix 4H

JAN 16 2024

Stimulation Report

WV Department of
Environmental Protection

| Stage Number | Report Date | ISIP (psi) | Breakdown Pressure (psi) | Avg Treating Pressure (psi) | Avg Treating Rate (BPM) | Pad Volume (bbls) | Total Clean Fluid (Bbls) | Total Proppant Amount (lbs) | Flush Volume (bbls) |
|--------------|-------------|------------|--------------------------|-----------------------------|-------------------------|-------------------|--------------------------|-----------------------------|---------------------|
| 1 | 5/1/22 | 5,158 | 10,800 | 9,864 | 90 | 520 | 7,522 | 300,520 | 605 |
| 2 | 5/2/22 | 4,636 | 6,627 | 9,617 | 76 | 43 | 10,151 | 455,580 | 597 |
| 3 | 5/2/22 | 5,595 | 6,814 | 9,965 | 90 | 15 | 9,645 | 458,513 | 532 |
| 4 | 5/2/22 | 5,043 | 6,440 | 9,774 | 89 | 153 | 10,305 | 465,080 | 580 |
| 5 | 5/3/22 | 5,551 | 7,894 | 9,870 | 90 | 26 | 10,033 | 454,900 | 583 |
| 6 | 5/3/22 | 5,699 | 7,327 | 9,961 | 91 | 57 | 9,436 | 453,668 | 532 |
| 7 | 5/3/22 | 5,174 | 6,905 | 9,820 | 91 | 28 | 9,622 | 457,300 | 575 |
| 8 | 5/4/22 | 5,127 | 7,477 | 9,824 | 92 | 28 | 9,666 | 455,350 | 578 |
| 9 | 5/4/22 | 5,090 | 6,652 | 9,846 | 92 | 48 | 9,650 | 455,656 | 565 |
| 10 | 5/4/22 | 5,757 | 5,842 | 9,759 | 90 | 22 | 9,285 | 455,700 | 562 |
| 11 | 5/5/22 | 5,509 | 7,344 | 9,783 | 92 | 47 | 9,369 | 461,218 | 568 |
| 12 | 5/5/22 | 6,015 | 6,543 | 9,663 | 92 | 46 | 9,651 | 473,880 | 556 |
| 13 | 5/5/22 | 5,961 | 7,342 | 9,660 | 92 | 33 | 9,404 | 454,560 | 549 |
| 14 | 5/6/22 | 5,988 | 6,481 | 9,496 | 89 | 36 | 9,465 | 455,295 | 554 |
| 15 | 5/6/22 | 5,428 | 6,914 | 9,729 | 91 | 39 | 9,528 | 455,900 | 540 |
| 16 | 5/7/22 | 5,398 | 7,547 | 9,673 | 91 | 18 | 9,467 | 452,824 | 988 |
| 17 | 5/7/22 | 5,914 | 7,650 | 9,756 | 91 | 26 | 10,608 | 454,660 | 532 |
| 18 | 5/8/22 | 6,203 | 7,467 | 9,753 | 91 | 38 | 9,434 | 456,414 | 534 |
| 19 | 5/8/22 | 6,476 | 6,701 | 9,691 | 90 | 288 | 9,656 | 458,610 | 528 |
| 20 | 5/9/22 | 6,363 | 6,648 | 9,580 | 92 | 88 | 9,595 | 453,960 | 518 |
| 21 | 5/9/22 | 5,998 | 7,263 | 9,632 | 91 | 37 | 9,717 | 454,829 | 535 |
| 22 | 5/9/22 | 5,740 | 7,282 | 9,673 | 91 | 16 | 9,229 | 455,040 | 508 |
| 23 | 5/10/22 | 5,932 | 7,377 | 9,651 | 92 | 29 | 9,531 | 456,340 | 503 |
| 24 | 5/10/22 | 5,808 | 6,894 | 9,569 | 91 | 39 | 9,482 | 455,264 | 483 |
| 25 | 5/10/22 | 5,528 | 7,257 | 9,804 | 89 | 21 | 9,327 | 457,760 | 246 |
| 26 | 5/11/22 | 6,116 | 7,407 | 9,571 | 91 | 30 | 9,491 | 455,740 | 491 |
| 27 | 5/11/22 | 6,074 | 7,166 | 9,576 | 91 | 41 | 9,660 | 455,388 | 498 |
| 28 | 5/11/22 | 5,557 | 6,949 | 9,614 | 90 | 33 | 9,498 | 456,600 | 479 |
| 29 | 5/12/22 | 5,733 | 7,703 | 9,587 | 90 | 15 | 9,523 | 455,060 | 482 |
| 30 | 5/12/22 | 5,968 | 7,374 | 9,450 | 91 | 41 | 9,199 | 455,452 | 485 |
| 31 | 5/12/22 | 5,897 | 6,828 | 9,340 | 90 | 22 | 9,484 | 457,012 | 472 |
| 32 | 5/13/22 | 6,063 | 7,504 | 9,454 | 90 | 23 | 9,337 | 456,692 | 466 |
| 33 | 5/13/22 | 6,294 | 7,590 | 9,605 | 90 | 25 | 9,416 | 455,191 | 467 |
| 34 | 5/13/22 | 5,453 | 6,674 | 9,629 | 88 | 32 | 9,479 | 456,572 | 454 |
| 35 | 5/14/22 | 5,826 | 7,173 | 9,455 | 91 | 18 | 9,460 | 456,952 | 456 |
| 36 | 5/14/22 | 6,319 | 7,205 | 9,638 | 91 | 22 | 9,278 | 456,226 | 460 |
| 37 | 5/14/22 | 6,246 | 7,334 | 9,661 | 94 | 38 | 9,413 | 457,437 | 455 |
| 38 | 5/15/22 | 5,800 | 7,701 | 9,663 | 92 | 21 | 9,209 | 455,192 | 443 |
| 39 | 5/15/22 | 5,600 | 8,003 | 9,688 | 94 | 25 | 9,338 | 455,875 | 367 |
| 40 | 5/15/22 | 5,669 | 8,206 | 9,732 | 93 | 22 | 9,179 | 455,457 | 367 |
| 41 | 5/15/22 | 5,573 | 7,793 | 9,754 | 93 | 43 | 9,398 | 454,600 | 367 |
| 42 | 5/16/22 | 5,878 | 7,856 | 9,769 | 93 | 16 | 9,339 | 454,484 | 367 |
| 43 | 5/16/22 | 5,884 | 7,343 | 9,741 | 93 | 50 | 9,326 | 453,788 | 367 |
| 44 | 5/16/22 | 5,948 | 8,600 | 9,744 | 90 | 11 | 9,092 | 454,200 | 367 |

02/23/2024

| | | | | | | | | | |
|----|---------|-------|-------|-------|----|----|-------|---------|-----|
| 45 | 5/17/22 | 5,617 | 8,042 | 9,812 | 9 | 27 | 9,307 | 442,585 | 413 |
| 46 | 5/17/22 | 5,518 | 8,335 | 9,675 | 96 | 27 | 9,075 | 440,210 | 437 |
| 47 | 5/17/22 | 6,311 | 8,112 | 9,580 | 93 | 26 | 9,303 | 454,853 | 402 |
| 48 | 5/18/22 | 5,876 | 7,792 | 9,553 | 92 | 16 | 9,241 | 444,924 | 397 |
| 49 | 5/18/22 | 5,796 | 8,359 | 9,519 | 94 | 39 | 9,320 | 450,780 | 399 |
| 50 | 5/18/22 | 5,726 | 7,431 | 9,383 | 94 | 35 | 9,195 | 460,180 | 392 |
| 51 | 5/19/22 | 6,226 | 7,637 | 9,187 | 92 | 13 | 8,867 | 450,740 | 383 |
| 52 | 5/19/22 | 6,612 | 6,897 | 9,160 | 94 | 58 | 8,901 | 455,840 | 382 |
| 53 | 5/19/22 | 5,284 | 7,389 | 9,244 | 94 | 29 | 9,069 | 447,420 | 385 |
| 54 | 5/19/22 | 5,454 | 6,835 | 9,143 | 92 | 10 | 8,879 | 809,100 | 363 |
| 55 | 5/20/22 | 5,344 | 7,199 | 9,121 | 92 | 14 | 8,844 | 453,420 | 368 |
| 56 | 5/20/22 | 5,725 | 8,236 | 9,071 | 94 | 19 | 8,988 | 439,680 | 367 |
| 57 | 5/20/22 | 5,522 | 8,934 | 9,272 | 93 | 10 | 9,113 | 454,080 | 363 |
| 58 | 5/20/22 | 5,673 | 8,776 | 9,198 | 92 | 12 | 9,213 | 455,860 | 355 |
| 59 | 5/21/22 | 5,377 | 8,520 | 9,231 | 91 | 9 | 9,111 | 455,784 | 347 |
| 60 | 5/21/22 | 5,946 | 9,273 | 9,103 | 94 | 77 | 9,279 | 431,157 | 341 |
| 61 | 5/21/22 | 5,463 | 8,514 | 9,146 | 93 | 25 | 9,009 | 444,880 | 340 |
| 62 | 5/22/22 | 5,401 | 8,410 | 9,004 | 93 | 55 | 9,458 | 456,820 | 333 |
| 63 | 5/22/22 | 5,891 | 7,884 | 9,041 | 94 | 42 | 9,328 | 459,460 | 330 |
| 64 | 5/22/22 | 6,001 | 7,442 | 8,881 | 94 | 53 | 9,196 | 453,660 | 326 |
| 65 | 5/22/22 | 5,908 | 8,067 | 8,847 | 94 | 15 | 9,007 | 457,140 | - |
| 66 | 5/23/22 | 5,847 | 8,019 | 8,804 | 95 | 26 | 9,067 | 453,780 | 312 |
| 67 | 5/23/22 | 5,901 | 8,084 | 8,906 | 94 | 32 | 9,176 | 457,750 | 307 |
| 68 | 5/23/22 | 5,582 | 7,922 | 8,841 | 94 | 15 | 9,150 | 456,100 | 307 |
| 69 | 5/24/22 | 5,787 | 8,478 | 8,912 | 94 | 41 | 9,114 | 455,550 | 298 |
| 70 | 5/24/22 | 5,856 | 7,767 | 8,923 | 94 | 71 | 9,371 | 453,260 | 294 |
| 71 | 5/24/22 | 6,917 | 7,789 | 8,734 | 94 | 21 | 9,210 | 455,646 | 298 |
| 72 | 5/25/22 | 6,331 | 7,644 | 8,706 | 94 | 15 | 9,125 | 455,150 | 292 |
| 73 | 5/25/22 | 6,246 | 7,397 | 8,688 | 94 | 40 | 9,114 | 453,820 | 280 |
| 74 | 5/25/22 | 6,063 | 7,616 | 8,695 | 94 | 37 | 8,835 | 454,792 | 291 |
| 75 | 5/26/22 | 6,263 | 7,731 | 8,714 | 94 | 35 | 8,438 | 456,000 | 302 |
| 76 | 5/26/22 | 5,578 | 7,995 | 8,652 | 94 | 28 | 8,488 | 455,880 | 267 |
| 77 | 5/27/22 | 5,919 | 7,994 | 8,502 | 94 | 30 | 8,971 | 455,190 | 295 |
| 78 | 5/27/22 | 5,583 | 7,139 | 8,458 | 95 | 38 | 9,391 | 458,710 | 260 |
| 79 | 5/27/22 | 5,414 | 7,617 | 8,496 | 94 | 24 | 8,642 | 456,830 | 258 |
| 80 | 5/27/22 | 5,657 | 7,786 | 8,291 | 94 | 33 | 8,523 | 456,930 | 258 |
| 81 | 5/28/22 | 6,030 | 7,642 | 8,353 | 94 | 29 | 8,538 | 457,400 | 258 |
| 82 | 5/28/22 | 5,622 | 7,359 | 8,337 | 95 | 26 | 8,698 | 455,016 | 240 |
| 83 | 5/28/22 | 5,695 | 7,393 | 8,284 | 95 | 14 | 8,369 | 456,520 | 236 |
| 84 | 5/28/22 | 5,844 | 7,993 | 8,218 | 95 | 16 | 8,531 | 456,660 | 232 |
| 85 | 5/28/22 | 5,730 | 7,331 | 8,123 | 94 | 11 | 8,403 | 454,376 | 240 |
| 86 | 5/28/22 | 5,947 | 7,446 | 8,097 | 95 | 32 | 8,549 | 455,357 | 234 |
| 87 | 5/29/22 | 5,932 | 7,716 | 8,129 | 94 | 41 | 8,711 | 456,560 | 230 |
| 88 | 5/29/22 | 6,084 | 7,717 | 8,091 | 94 | 42 | 8,565 | 455,780 | 233 |
| 89 | 5/29/22 | 5,912 | 7,661 | 8,174 | 95 | 17 | 8,664 | 455,640 | 209 |
| 90 | 5/29/22 | 5,677 | 7,635 | 8,147 | 95 | 39 | 8,568 | 455,990 | 205 |
| 91 | 5/29/22 | 5,815 | 7,813 | 8,220 | 94 | 27 | 8,489 | 456,340 | 214 |
| 92 | 5/30/22 | 5,389 | 7,704 | 8,175 | 94 | 47 | 8,474 | 452,390 | 212 |
| 93 | 5/30/22 | 5,370 | 7,056 | 8,216 | 95 | 31 | 8,628 | 456,670 | 191 |
| 94 | 5/30/22 | 5,225 | 7,752 | 8,051 | 95 | 32 | 8,470 | 451,053 | 187 |

02/23/2024

Phoenix 4H
Stimulation Report

| Stage Number | Report Date | Total Shots | Cluster 1 Top TD | Cluster 5 Bottom TD |
|--------------|-------------|-------------|------------------|---------------------|
| 1 | 5/1/22 | 40 | - | 27,084 |
| 2 | 5/2/22 | 40 | 27,041 | 26,882 |
| 3 | 5/2/22 | 40 | 26,840 | 26,681 |
| 4 | 5/2/22 | 40 | 26,639 | 26,481 |
| 5 | 5/3/22 | 40 | 26,439 | 26,280 |
| 6 | 5/3/22 | 40 | 26,238 | 26,080 |
| 7 | 5/3/22 | 40 | 26,037 | 25,879 |
| 8 | 5/4/22 | 40 | 25,837 | 25,678 |
| 9 | 5/4/22 | 40 | 25,636 | 25,478 |
| 10 | 5/4/22 | 40 | 25,435 | 25,277 |
| 11 | 5/5/22 | 40 | 25,235 | 25,076 |
| 12 | 5/5/22 | 40 | 25,034 | 24,876 |
| 13 | 5/5/22 | 40 | 24,833 | 24,675 |
| 14 | 5/6/22 | 40 | 24,633 | 24,474 |
| 15 | 5/6/22 | 40 | 24,432 | 24,274 |
| 16 | 5/7/22 | 40 | 24,231 | 24,073 |
| 17 | 5/7/22 | 40 | 24,031 | 23,872 |
| 18 | 5/8/22 | 40 | 23,830 | 23,672 |
| 19 | 5/8/22 | 40 | 23,629 | 23,471 |
| 20 | 5/9/22 | 40 | 23,429 | 23,270 |
| 21 | 5/9/22 | 40 | 23,228 | 23,070 |
| 22 | 5/9/22 | 40 | 23,027 | 22,869 |
| 23 | 5/10/22 | 40 | 22,827 | 22,668 |
| 24 | 5/10/22 | 40 | 22,626 | 22,468 |
| 25 | 5/10/22 | 40 | 22,425 | 22,267 |
| 26 | 5/11/22 | 40 | 22,225 | 22,066 |
| 27 | 5/11/22 | 40 | 22,024 | 21,866 |
| 28 | 5/11/22 | 40 | 21,824 | 21,665 |
| 29 | 5/12/22 | 40 | 21,623 | 21,464 |
| 30 | 5/12/22 | 40 | 21,422 | 21,264 |
| 31 | 5/12/22 | 40 | 21,222 | 21,063 |
| 32 | 5/13/22 | 40 | 21,021 | 20,862 |
| 33 | 5/13/22 | 40 | 20,820 | 20,662 |
| 34 | 5/13/22 | 40 | 20,620 | 20,461 |
| 35 | 5/14/22 | 40 | 20,419 | 20,260 |
| 36 | 5/14/22 | 40 | 20,218 | 20,060 |
| 37 | 5/14/22 | 40 | 20,018 | 19,859 |
| 38 | 5/15/22 | 40 | 19,817 | 19,658 |
| 39 | 5/15/22 | 40 | 19,616 | 19,458 |
| 40 | 5/15/22 | 40 | 19,416 | 19,257 |
| 41 | 5/15/22 | 40 | 19,215 | 19,056 |
| 42 | 5/16/22 | 40 | 19,014 | 18,856 |
| 43 | 5/16/22 | 40 | 18,814 | 18,655 |
| 44 | 5/16/22 | 40 | 18,613 | 18,454 |

RECEIVED
Office of Oil and Gas

JAN 16 2024

WV Department of
Environmental Protection

02/23/2024

| | | | | |
|----|---------|----|--------|--------|
| 45 | 5/17/22 | 40 | 18,412 | 18,254 |
| 46 | 5/17/22 | 40 | 18,212 | 18,053 |
| 47 | 5/17/22 | 40 | 18,011 | 17,852 |
| 48 | 5/18/22 | 40 | 17,810 | 17,652 |
| 49 | 5/18/22 | 40 | 17,610 | 17,451 |
| 50 | 5/18/22 | 40 | 17,409 | 17,250 |
| 51 | 5/19/22 | 40 | 17,208 | 17,050 |
| 52 | 5/19/22 | 40 | 17,008 | 16,849 |
| 53 | 5/19/22 | 40 | 16,807 | 16,648 |
| 54 | 5/19/22 | 40 | 16,606 | 16,448 |
| 55 | 5/20/22 | 40 | 16,406 | 16,247 |
| 56 | 5/20/22 | 40 | 16,205 | 16,046 |
| 57 | 5/20/22 | 40 | 16,004 | 15,846 |
| 58 | 5/20/22 | 40 | 15,804 | 15,645 |
| 59 | 5/21/22 | 40 | 15,603 | 15,445 |
| 60 | 5/21/22 | 40 | 15,402 | 15,244 |
| 61 | 5/21/22 | 40 | 15,202 | 15,043 |
| 62 | 5/22/22 | 40 | 15,001 | 14,843 |
| 63 | 5/22/22 | 40 | 14,800 | 14,642 |
| 64 | 5/22/22 | 40 | 14,600 | 14,441 |
| 65 | 5/22/22 | 40 | 14,399 | 14,241 |
| 66 | 5/23/22 | 40 | 14,198 | 14,040 |
| 67 | 5/23/22 | 40 | 13,998 | 13,839 |
| 68 | 5/23/22 | 40 | 13,797 | 13,639 |
| 69 | 5/24/22 | 40 | 13,596 | 14,438 |
| 70 | 5/24/22 | 40 | 13,396 | 13,237 |
| 71 | 5/24/22 | 40 | 13,195 | 13,037 |
| 72 | 5/25/22 | 40 | 12,994 | 12,836 |
| 73 | 5/25/22 | 40 | 12,794 | 12,635 |
| 74 | 5/25/22 | 40 | 12,593 | 12,435 |
| 75 | 5/26/22 | 40 | 12,392 | 12,234 |
| 76 | 5/26/22 | 40 | 12,192 | 12,033 |
| 77 | 5/27/22 | 40 | 11,991 | 11,833 |
| 78 | 5/27/22 | 40 | 11,791 | 11,632 |
| 79 | 5/27/22 | 40 | 11,590 | 11,431 |
| 80 | 5/27/22 | 40 | 11,389 | 11,231 |
| 81 | 5/28/22 | 40 | 11,189 | 11,030 |
| 82 | 5/28/22 | 40 | 10,988 | 10,829 |
| 83 | 5/28/22 | 40 | 10,787 | 10,629 |
| 84 | 5/28/22 | 40 | 10,587 | 10,428 |
| 85 | 5/28/22 | 40 | 10,386 | 10,227 |
| 86 | 5/28/22 | 40 | 10,185 | 10,027 |
| 87 | 5/29/22 | 40 | 9,985 | 9,826 |
| 88 | 5/29/22 | 40 | 9,784 | 9,625 |
| 89 | 5/29/22 | 40 | 9,583 | 9,425 |
| 90 | 5/29/22 | 40 | 9,383 | 9,224 |
| 91 | 5/29/22 | 40 | 9,182 | 9,023 |
| 92 | 5/30/22 | 40 | 8,981 | 8,823 |
| 93 | 5/30/22 | 40 | 8,781 | 8,622 |
| 94 | 5/30/22 | 40 | 8,580 | 8,421 |

RECEIVED
Office of Oil and Gas

JAN 16 2024

WV Department of
Environmental Protection

02/23/2024

Cement Job Log



NexTier Completion Solutions
3990 Rogerdale Rd., Houston, TX 77042
(713)325-6000

| | | |
|--|--------------------------|---------------------------------|
| Customer: NORTHEAST NATURAL ENERGY LLC | Date: 21-Feb-22 | Serv. Supervisor: Steven Long |
| Cust. Rep.: JOSH | Ticket #: BPA-2202-0032 | Serv. Center: Black Lick - 1571 |
| Well Name: Phoenix 4H | API Well #: 47-061-01875 | County: Monongalia State: WV |
| Well Type: | Rig: PATTERSON 277 | Type of Job: CM-SURFACE CASING |

Materials Furnished by NexTier

| Plugs | Casing Hardware | Physical Slurry Properties | | | | | | | |
|--------------------------|--|----------------------------|------------------------|--------|-----------------|--------------------|----------------------|---------------------|-------------------|
| | | Sacks of Cement | Fluid Density (lb/gal) | Excess | Yield (cuft/sk) | Mix Water (gal/sk) | Fluid Volume (bbbls) | Fluid Volume (cuft) | Mix Water (bbbls) |
| 6% Gel Spacer | +20.0 PPB NEX-020 | | 8.7 | | 4.62 | 33.66 | 25.00 | - | |
| 15.6 lb/gal Cement | 100% NCM-910 +1.0% NAC-110+0.25 PPS NLM-600 | 2395 | 15.6 | 12% | 1.19 | 5.21 | 506.68 | 2,845.01 | 297 |
| Fresh Water Displacement | | | 8.33 | | | - | 225.39 | - | |
| 0 | | | | | | - | | - | |
| | | | | | | - | | - | |
| | | | | | | - | | - | |
| | | | | | | - | | - | |
| | | | | | | - | | - | |
| | | | | | | - | | - | |
| | | | | | | - | | - | |
| | | | | | | - | | - | |
| | | | | | | - | | - | |
| | | | | | | - | | - | |
| | | | | | | - | | - | |
| | | | | | | - | | - | |

Displacement Chemicals:

OPEN HOLE DATA

TUBULAR DATA

| | | | | | | | | | | | | |
|-----------------------------|------------|----------------|------------------------------------|----------------|----------------|-------------|------|------------|-------|---------|-------------|----------------|
| 22 in. O.H. 128 to 1,498 ft | | | 13.375 in. 54.5#, (0 to 1,498 ft) | | | SIZE WEIGHT | THRD | DEPTH (ft) | GRADE | ID (in) | BURST (psi) | COLLAPSE (psi) |
| Ambient Temp. | Bulk Temp. | Slurry 1 Temp. | Slurry 2 Temp. | Slurry 3 Temp. | Slurry 4 Temp. | 13.375 54.5 | BTC | 1592 | J-55 | 12.615 | 2730 | 1130 |
| 40.0 °F | | 57.0 °F | | | | | | | | | | |

PREVIOUS CASING DATA

PERFORATED INTERVAL DATA

CASING EQUIPMENT DEPTHS

| | | | | | | | | |
|-----------------------------|-----|-----|-----|------|------|-------|-------|-----|
| 24 in. 97.4# (0 to 128 ft) | TOP | BTM | SPF | SIZE | SHOE | FLOAT | STAGE | ACP |
| | | | | | 1592 | 1548 | | |
| | | | | | | | | |

WELL FLUID

DISPLACEMENT FLUID

DIFF PRESS

CSG LIFT

MAX PRESS

Mix H2O Chlorides (ppm)

Mix H2O pH

Mix H2O Temp

WATER ON LOC (bbl)

| TYPE | DENSITY | VOLUME | TYPE | DENSITY | (psi) | (psi) | (psi) | (ppm) | | | |
|------|---------|-----------|------|---------|-------|-------|-------|-------|---|---------|------|
| H2O | 8.4 ppg | 239.3 bbl | H2O | 8.4 ppg | 585 | 470 | 2184 | < 200 | 7 | 50.0 °F | 1600 |

| | | | | | | | | | | | |
|-------------|--------------------------|-------------------|--------------------|-------------------------|--------------------|-----------------------------|-------------------------|-----------------|------------------------------|----------------------|---------------------|
| Bumped Plug | Final Differential (psi) | Floats Held (Y/N) | PSI Left on Casing | Cement to Surface (bbl) | Top of Cement (ft) | Full Circ. During Job (Y/N) | Max Pump Pressure (psi) | Casing Rotation | Additional Hrs Charged (hrs) | Casing Reciprocation | Rathole Length (ft) |
| Yes | 600.00 | Y | - | 19.00 | - | Yes | 1,100.00 | No | 11.00 | No | |

Comments/Additional Details:

RECEIVED
Office of Oil and Gas

Steven Long
Service Supervisor

21-Feb-22
Date

JAN 16 2024

WV Department of
Environmental Protection

02/23/2024

Cement Job Log



NexTier Completion Solutions
3990 Rogerdale Rd., Houston, TX 77042
(713)325-6000

| | | | | | |
|-------------|------------------------------|-------------|---------------|-------------------|-------------------|
| Customer: | NORTHEAST NATURAL ENERGY LLC | Date: | 23-Feb-22 | Serv. Supervisor: | Tim Monoskey |
| Cust. Rep.: | JOSH | Ticket #: | BPA-2202-0035 | Serv. Center: | Black Lick - 1571 |
| Well Name: | Phoenix 4H | API Well #: | 47-061-01875 | County: | Monongalia |
| Well Type: | | Rig: | PATTERSON 277 | State: | WV |
| | | | | Type of Job: | CM-INTER. CASING |

Materials Furnished by NexTier

| Plugs | Casing Hardware | Physical Slurry Properties | | | | | | | |
|--------------------------|-------------------------------|----------------------------|------------------------|--------|-----------------|--------------------|---------------------|---------------------|------------------|
| CUSTOMER SUPPLIED | NEXTier 9 5/8 PLUG CONTAINER | Sacks of Cement | Fluid Density (lb/gal) | Excess | Yield (cuft/sk) | Mix Water (gal/sk) | Fluid Volume (bbls) | Fluid Volume (cuft) | Mix Water (bbls) |
| TOP PLUG | | | | | | | | | |
| 6% Gel Spacer | +20.0 PPB NEX-020 | | 8.7 | | 4.62 | 33.66 | 25.00 | - | |
| 15.6 lb/gal Cement | 100% NCM-910 +1.0% NAC-110 | 905 | 15.6 | 30% | 1.19 | 5.24 | 191.46 | 1,075.05 | 113 |
| Fresh Water Displacement | | | 8.33 | | | - | 210.13 | - | |
| 0 | | | | | | - | | - | |
| | | | | | | - | | - | |
| | | | | | | - | | - | |
| | | | | | | - | | - | |
| | | | | | | - | | - | |
| | | | | | | - | | - | |
| | | | | | | - | | - | |
| | | | | | | - | | - | |
| | | | | | | - | | - | |
| | | | | | | - | | - | |
| | | | | | | - | | - | |
| | | | | | | - | | - | |
| | | | | | | - | | - | |
| | | | | | | - | | - | |

Displacement Chemicals: N/A

| OPEN HOLE DATA | | | | TUBULAR DATA | | | | | | | | | | |
|-----------------------------------|--------------------------|-------------------|--------------------|---------------------------------|--------------------|-----------------------------|-------------------------|-------------------------|------------------------------|----------------------|---------------------|--------------------|-------------|----------------|
| 12.25 in. O.H. 1,498 to 2,758 ft | | | | 9.625 in. 36#, (0 to 2,758 ft) | | | | SIZE WEIGHT | THRD | DEPTH (ft) | GRADE | ID (in) | BURST (psi) | COLLAPSE (psi) |
| Ambient Tmp. | Bulk Tmp. | Slurry 1 Tmp. | Slurry 2 Tmp. | Slurry 3 Tmp. | Slurry 4 Tmp. | 9.625" 36# | BTC | 2821 | J-55 | 8.921 | 3520 | 2020 | | |
| 29.0 °F | 29.0 °F | 54.0 °F | 61.0 °F | | | | | | | | | | | |
| PREVIOUS CASING DATA | | | | PERFORATED INTERVAL DATA | | | | CASING EQUIPMENT DEPTHS | | | | | | |
| 13.375 in. 54.5# (0 to 1,498 ft) | | | | TOP | BTM | SPF | SIZE | SHOE | FLOAT | STAGE | ACP | | | |
| | | | | | | | | 2821 | 2776 | | | | | |
| WELL FLUID | | | DISPLACEMENT FLUID | | | DIFF PRESS (psi) | CSG LIFT (psi) | MAX PRESS (psi) | Mix H2O Chlorides (ppm) | Mix H2O pH | Mix H2O Temp | WATER ON LOC (bbl) | | |
| TYPE | DENSITY | VOLUME | TYPE | DENSITY | | | | | | | | | | |
| REC | 8.4 ppg | 214.6 bbl | REC | 8.4 ppg | 1048.4 | 1063 | 3500 | <300 | 7 | 52.0 °F | 1200 | | | |
| Bumped Plug | Final Differential (psi) | Floats Held (Y/N) | PSI Left on Casing | Cement to Surface (bbl) | Top of Cement (ft) | Full Circ. During Job (Y/N) | Max Pump Pressure (psi) | Casing Rotation | Additional Hrs Charged (hrs) | Casing Reciprocation | Rathole Length (ft) | | | |
| Yes | 1,100.00 | Y | - | 10.00 | - | No | 3,500.00 | No | 8.00 | No | 20' | | | |

Comments/Additional Details:

RECEIVED
Office of Oil and Gas
JAN 16 2024

Tim Monoskey
Service Supervisor

23-Feb-22
Date

WV Department of
Environmental Protection

02/23/2024

Cement Job Log



NextTier Completion Solutions
3990 Rogerdale Rd., Houston, TX 77042
(713)325-6000

| | | | | | |
|-------------|------------------------------|-------------|---------------|-------------------|----------------------|
| Customer: | NORTHEAST NATURAL ENERGY LLC | Date: | 9-Mar-22 | Serv. Supervisor: | Steven Long |
| Cust. Rep.: | TROY | Ticket #: | BPA-2203-0014 | Serv. Center: | Black Lick - 1571 |
| Well Name: | Phoenix 4H | API Well #: | 47-061-01875 | County: | Monongalia State: WV |
| Well Type: | | Rig: | PATTERSON 277 | Type of Job: | CM-PROD. CASING |

Materials Furnished by NextTier

| Plugs | Casing Hardware | Physical Slurry Properties | | | | | | | |
|---|--|----------------------------|------------------------|--------|-----------------|--------------------|---------------------|---------------------|------------------|
| | | Sacks of Cement | Fluid Density (lb/gal) | Excess | Yield (cuft/sk) | Mix Water (gal/sk) | Fluid Volume (bbls) | Fluid Volume (cuft) | Mix Water (bbls) |
| 13.5 lb/gal PureScrub Spacer w/Surfactant | +7.0 PPB NFP-703+1.0 GPB NTC-885 | 110 | 13.5 | | 5.65 | 26.79 | 80.00 | 621.88 | 70 |
| 14.5 lb/gal Cement | 50 % NCM-910+50 % NPZ-010 +0.2 % NFP-703+0.15 % NAS-504+0.35 % NRT-213+0.15 % NFL-549+0.1 % NTC-405 | 5055 | 14.5 | | 1.16 | 4.90 | 1,042.72 | 5,854.84 | 589 |
| Sugar Water Displacement | +5.0 PPB NRT-215 | | | | | - | 20.00 | - | |
| Fresh Water Displacement | | | | | | - | 582.84 | - | |
| | | | | | | - | | - | |
| | | | | | | - | | - | |
| | | | | | | - | | - | |
| | | | | | | - | | - | |
| | | | | | | - | | - | |
| | | | | | | - | | - | |
| | | | | | | - | | - | |
| | | | | | | - | | - | |
| | | | | | | - | | - | |
| | | | | | | - | | - | |
| | | | | | | - | | - | |
| | | | | | | - | | - | |
| | | | | | | - | | - | |
| | | | | | | - | | - | |

Displacement Chemicals:

| OPEN HOLE DATA | | | | TUBULAR DATA | | | | | | | | | | |
|--|--------------------------|-------------------|--------------------|--------------------------------|--------------------|-----------------------------|-------------------------|-------------------------|------------------------------|----------------------|---------------------|--------------------|-------------|----------------|
| 8.75 in. O.H. 2,758 to 7,928 ft 8.5 in. O.H. 7,928 to 27,186 ft | | | | 5.5 in. 20#, (0 to 27,186 ft) | | | | SIZE WEIGHT | THRD | DEPTH (ft) | GRADE | ID (in) | BURST (psi) | COLLAPSE (psi) |
| Ambient Tmp. | Bulk Tmp. | Slurry 1 Tmp. | Slurry 2 Tmp. | Slurry 3 Tmp. | Slurry 4 Tmp. | 5.5 20# | BTC | 27194.5 | P-110 | 4.778 | 12640 | 11080 | | |
| 37.0 °F | | 57.8 °F | | | | | | | | | | | | |
| PREVIOUS CASING DATA | | | | PERFORATED INTERVAL DATA | | | | CASING EQUIPMENT DEPTHS | | | | | | |
| 9.625 in. 36# (0 to 2,758 ft) | | | | TOP | BTM | SPF | SIZE | SHOE | FLOAT | STAGE | ACP | | | |
| | | | | | | | | 27194.5 | 27193.5 | | | | | |
| WELL FLUID | | | DISPLACEMENT FLUID | | | DIFF PRESS (psi) | CSG LIFT (psi) | MAX PRESS (psi) | Mix H2O Chlorides (ppm) | Mix H2O pH | Mix H2O Temp | WATER ON LOC (bbl) | | |
| TYPE | DENSITY | VOLUME | TYPE | DENSITY | | | | | | | | | | |
| OBM | 12.3 ppg | 603.7 bbl | H2O | 8.3 ppg | | 4600 | | 6500 | < 200 | 7 | 49.0 °F | 1600 | | |
| Bumped Plug | Final Differential (psi) | Floats Held (Y/N) | PSI Left on Casing | Cement to Surface (bbl) | Top of Cement (ft) | Full Circ. During Job (Y/N) | Max Pump Pressure (psi) | Casing Rotation | Additional Hrs Charged (hrs) | Casing Reciprocation | Rathole Length (ft) | | | |
| Yes | 4,025.00 | Y | - | - | 2,192 | Yes | 5,000.00 | No | - | No | 20 | | | |

Comments/Additional Details:

| | | |
|--|-----------------------------------|------------------|
| RECEIVED Office of Oil and Gas JAN 16 2024 | Steven Long Service Supervisor | 9-Mar-22 Date |
|--|-----------------------------------|------------------|

WV Department of Environmental Protection

02/23/2024

Hydraulic Fracturing Fluid Product Component Information Disclosure

| | |
|--------------------------------|------------------------------|
| Job Start Date: | 5/1/2022 |
| Job End Date: | 5/30/2022 |
| State: | West Virginia |
| County: | Monongalia |
| API Number: | 47-061-01875-00-00 |
| Operator Name: | Northeast Natural Energy LLC |
| Well Name and Number: | Phoenix 4H |
| Latitude: | 39.64124200 |
| Longitude: | -80.27202300 |
| Datum: | NAD27 |
| Federal Well: | NO |
| Indian Well: | NO |
| True Vertical Depth: | 8,201 |
| Total Base Water Volume (gal): | 36,240,498 |
| Total Base Non Water Volume: | 0 |

RECEIVED
Office of Oil and Gas
JAN 16 2024
WV Department of
Environmental Protection



Hydraulic Fracturing Fluid Composition:

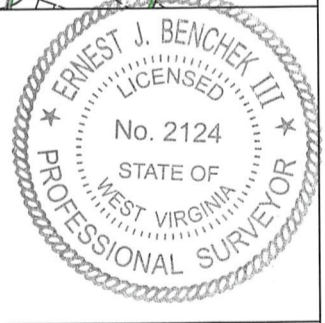
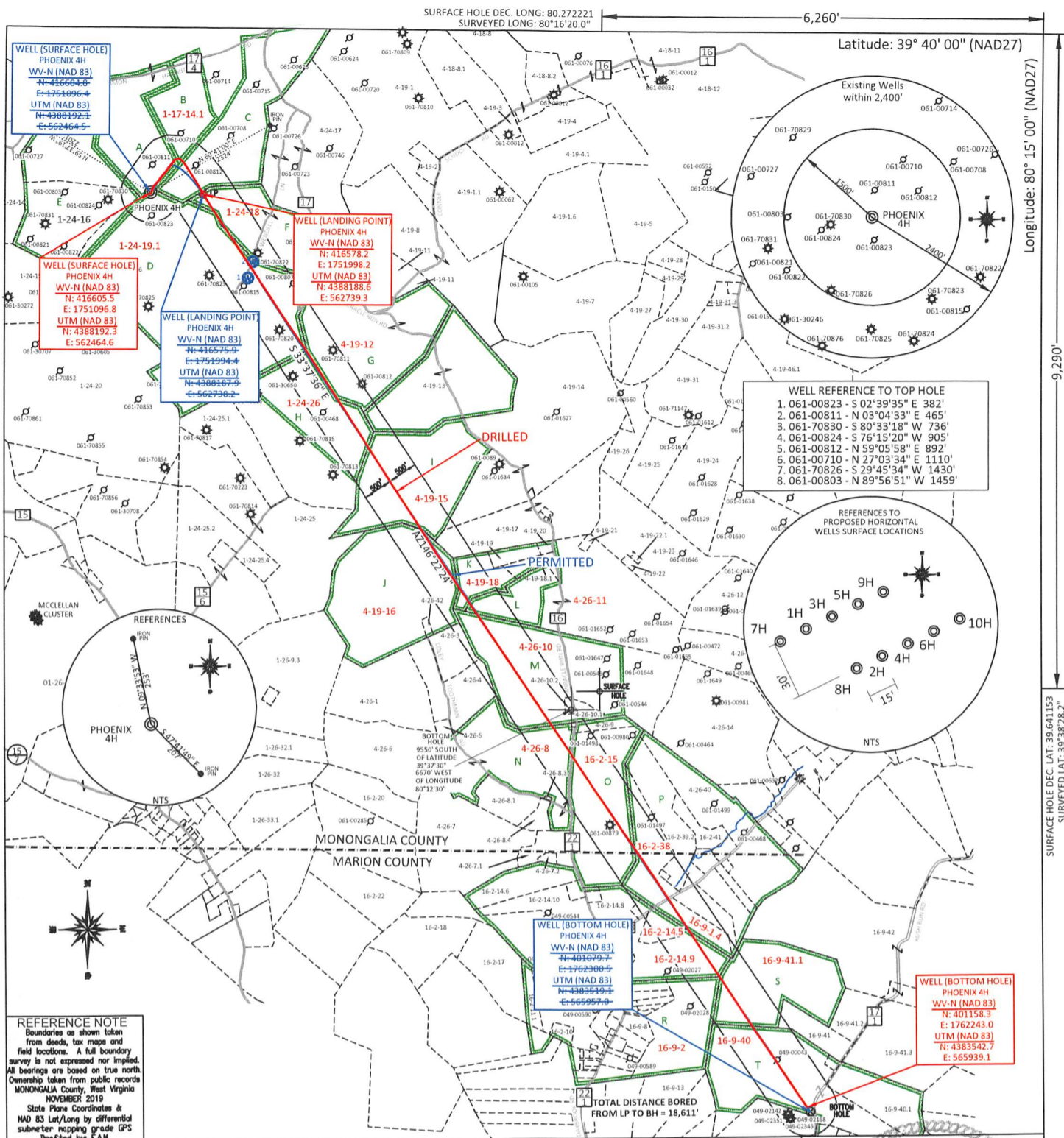
| Trade Name | Supplier | Purpose | Ingredients | Chemical Abstract Service Number (CAS #) | Maximum Ingredient Concentration in Additive (% by mass)** | Maximum Ingredient Concentration in HF Fluid (% by mass)** | Comments |
|-----------------------------|--------------------------|--------------------|---------------------------------------|--|--|--|----------|
| Water | Northeast Natural Energy | Carrier/Base Fluid | Water | 7732-18-5 | 100.00000 | 87.42339 | None |
| Sand (100 Mesh Proppant) | ProFrac | Proppant | Silica Substrate | 14808-60-7 | 100.00000 | 9.53411 | None |
| Sand (40/70 White Proppant) | ProFrac | Proppant | Silica Substrate | 14808-60-7 | 100.00000 | 2.78233 | None |
| Hydrochloric Acid (7.5%) | CNR | Acidizing | Water | 7732-18-5 | 85.00000 | 0.13337 | None |
| | | | Hydrochloric Acid (Hydrogen Chloride) | 7647-01-0 | 37.00000 | 0.05806 | None |
| StimSTREAM FR 9800 | Chemstream | Friction Reducer | alkanes, C16-20-iso- | 90622-59-6 | 25.00000 | 0.01390 | None |
| | | | Butene, homopolymer | 9003-29-6 | 25.00000 | 0.01390 | None |
| | | | Ethoxylated alcohols (C12-18) | 68213-23-0 | 3.00000 | 0.00167 | None |
| Clearal 268 | Chemstream | Biocide | Non-hazardous substances | Proprietary | 80.00000 | 0.02129 | None |

| | | | | | | | |
|-------------------|------------|----------------|--|-------------|----------|---------|------|
| | | | Glutaraldehyde | 111-30-8 | 20.00000 | 0.00532 | None |
| | | | Quaternary Ammonium Compounds | 68424-85-1 | 3.00000 | 0.00080 | None |
| | | | Didecyl dimethyl ammonium chloride | 7173-51-5 | 3.00000 | 0.00080 | None |
| | | | Ethanol | 64-17-5 | 1.50000 | 0.00040 | None |
| StimSTREAM SC 405 | Chemstream | Scale Control | | | | | |
| | | | Non-Hazardous Substances | Proprietary | 70.00000 | 0.01408 | None |
| | | | Diethylenetriamine penta (methylene phosphonic acid) (DTPMP) | 15827-60-8 | 10.00000 | 0.00201 | None |
| | | | Citric Acid | 77-92-9 | 10.00000 | 0.00201 | None |
| | | | 2-Phosphono-1,2,4-butanetricarboxylic acid (PBTC) | 37971-36-1 | 10.00000 | 0.00201 | None |
| ProHib 100 | CNR | Acid Inhibitor | | | | | |
| | | | 2-Butoxyethanol | 111-76-2 | 60.00000 | 0.00032 | None |
| | | | Proprietary material | Proprietary | 30.00000 | 0.00016 | None |
| | | | Proprietary non-ionic surfactant | Proprietary | 20.00000 | 0.00011 | None |
| | | | Proprietary corrosion inhibitor | Proprietary | 10.00000 | 0.00005 | None |
| | | | Proprietary ethoxylated alcohol | Proprietary | 10.00000 | 0.00005 | None |
| ProFE 105 | CNR | Iron Control | | | | | |
| | | | Citric Acid | 77-92-9 | 20.00000 | 0.00008 | None |
| | | | Acetic Acid | 64-19-7 | 5.00000 | 0.00002 | None |

Ingredients shown above are subject to 29 CFR 1910.1200(i) and appear on Material Safety Data Sheets (MSDS). Ingredients shown below are Non-MSDS.

| Other Chemical(s) | Listed Above | See Trade Name(s) List | | | | | |
|-------------------|--------------|------------------------|--|-------------|----------|---------|--|
| | | | Water | 7732-18-5 | 85.00000 | 0.13337 | |
| | | | Non-hazardous substances | Proprietary | 80.00000 | 0.02129 | |
| | | | Non-Hazardous Substances | Proprietary | 70.00000 | 0.01408 | |
| | | | Butene, homopolymer | 9003-29-6 | 25.00000 | 0.01390 | |
| | | | Citric Acid | 77-92-9 | 10.00000 | 0.00201 | |
| | | | Diethylenetriamine penta (methylene phosphonic acid) (DTPMP) | 15827-60-8 | 10.00000 | 0.00201 | |
| | | | Ethoxylated alcohols (C12-18) | 68213-23-0 | 3.00000 | 0.00167 | |
| | | | Didecyl dimethyl ammonium chloride | 7173-51-5 | 3.00000 | 0.00080 | |
| | | | Quaternary Ammonium Compounds | 68424-85-1 | 3.00000 | 0.00080 | |
| | | | Ethanol | 64-17-5 | 1.50000 | 0.00040 | |
| | | | Proprietary material | Proprietary | 30.00000 | 0.00016 | |
| | | | Proprietary non-ionic surfactant | Proprietary | 20.00000 | 0.00011 | |
| | | | Proprietary ethoxylated alcohol | Proprietary | 10.00000 | 0.00005 | |
| | | | Proprietary corrosion inhibitor | Proprietary | 10.00000 | 0.00005 | |
| | | | Acetic Acid | 64-19-7 | 5.00000 | 0.00002 | |

RECEIVED
 Office of Oil and Gas
 Environmental Protection
 MN Department of
 JAN 16 2024



RECEIVED
Office of Oil and Gas
JAN 16 2024
WV Department of Environmental Protection

(+) DENOTES LOCATION OF WELL ON UNITED STATES TOPOGRAPHIC MAPS WYDEP

OFFICE OF OIL & GAS
601 57TH STREET
CHARLESTON, WV 25304

Well Type: Oil Waste Diposal Production Deep
 Gas Liquid Injection Storage Shallow

WATERSHED: DUNKARD CREEK
COUNTY/DISTRICT: MONONGALIA / BATELLE
SURFACE OWNER: CHARLES WENDELL MOORE & FRANK M. CHISLER
OIL & GAS ROYALTY OWNER: Pat L. Park, et al
LEASE NUMBERS: SEE PAGE 2

DRILL CONVERT DRILL DEEPER REDRILL FRACTURE OR STIMULATE
PLUG OFF FORMATION PERFORATE NEW FORMATION PLUG & ABANDON
CLEAN OUT & REPLUG OTHER CHANGE (SPECIFY): _____

TARGET FORMATION: MARCELLUS
WELL OPERATOR: NORTHEAST NATURAL ENERGY LLC
ADDRESS: 707 VIRGINIA STREET EAST, SUITE 1200
CITY: CHARLESTON STATE: WV ZIP CODE: 25301

DRILLED DEPTH: TVD: 8,057' TMD: 27,212'
DESIGNATED AGENT: JOHN ADAMS
ADDRESS: 707 VIRGINIA STREET EAST, SUITE 1200
CITY: CHARLESTON STATE: WV ZIP CODE: 25301

| PROPERTY OWNER INDEX | |
|----------------------|--|
| 1-17-14.1 | FRANK M. CHISLER |
| 1-24-19.1 | CHARLES WENDEL MOORE |
| 1-24-18 | JOHN RAYMOND & JENNIFER L. HORNSBY MYERS |
| 4-19-12 | EDITH L DARRAH |
| 1-24-26 | RANDY D & SUSAN K HAMILTON |
| 4-19-18 | CAROLYN S PAYTON |
| 4-19-15 | TIMOTHY ALAN DARRAH |
| 4-19-16 | CLAY & KATIE A FLUHARTY |
| 4-26-10 | BETTY C & BETTY A HAUGHT |
| 4-26-8 | BILLY C HAUGHT TRS ET AL |
| 16-2-15 | BILLY C & BETTY A HAUGHT |
| 16-2-38 | ROBERT E & LUELLA R CONAWAY |
| 16-9-1.4 | WACO OIL & GAS CO INC |
| 16-2-14.5 | SUE CHISLER |
| 16-2-14.9 | SUE CHISLER |
| 16-9-41.1 | JAMES R MOORE |
| 16-9-2 | AL MCPHERSON |
| 16-9-40 | JOHN & SANDRA J MOORE |
| 4-26-11 | CAROL S PAYTON |

| LEASE INDEX | | | |
|-------------|-------------------|---|-----------------------|
| A | WV-061-004079-001 | K | WV-061-004956-011 |
| B | WV-061-004079-001 | L | WV-061-004956-011 |
| C | WV-061-003767-004 | M | WV-061-005699-002 |
| D | WV-061-004463-001 | N | WV-061-005699-002 |
| E | WV-061-004076-010 | O | WV-061-000146-001-LOI |
| F | WV-061-005687-001 | P | WV-061-000146-001-LOI |
| G | WV-061-001730-004 | Q | WV-061-000146-001-LOI |
| H | WV-061-005109-026 | R | WV-049-005267-001 |
| I | WV-061-005588-001 | S | WV-061-000146-001-LOI |
| J | WV-061-001906-020 | T | WV-061-000146-001-LOI |

RECEIVED
Office of Oil and Gas

JAN 16 2024

02/23/2024

WV Department of
Environmental Protection

FILE #: NEE14

DRAWING #: 2958

SCALE: N/A

DATE: MAY 30, 2023

OPERATOR'S WELL #: PHOENIX 4H AS-DRILLED

API WELL #: 47 61 01875
STATE COUNTY PERMIT