

47-061-01853 P

WW-7
8-30-06



West Virginia Department of Environmental Protection
Office of Oil and Gas
WELL LOCATION FORM: GPS

API: 47-061-70993 WELL NO.: 4381

FARM NAME: E. BENTON HALL

RESPONSIBLE PARTY NAME: CONSOLIDATION COAL COMPANY

COUNTY: Monongalia DISTRICT: Battelle

QUADRANGLE: WADESTOWN WV, PA 7.5'

SURFACE OWNER: CONSOL MINING COMPANY LLC.(C/O MURRAY AMERICAN ENERGY INC.)

ROYALTY OWNER: _____

UTM GPS NORTHING: 4,387,728 m (1234')

UTM GPS EASTING: 553,770 m GPS ELEVATION: 376 m

The Responsible Party named above has chosen to submit GPS coordinates in lieu of preparing a new well location plat for a plugging permit or assigned API number on the above well. The Office of Oil and Gas will not accept GPS coordinates that do not meet the following requirements:

- Datum: NAD 1983, Zone: 17 North, Coordinate Units: meters, Altitude: height above mean sea level (MSL) – meters.
- Accuracy to Datum – 3.05 meters
- Data Collection Method:

Survey grade GPS x : Post Processed Differential _____

Real-Time Differential X

Mapping Grade GPS _____ : Post Processed Differential _____

Real-Time Differential _____

- Letter size copy of the topography map showing the well location.**

I the undersigned, hereby certify this data is correct to the best of my knowledge and belief and shows all the information required by law and the regulations issued and prescribed by the Office of Oil and Gas.

Signature

Professional Surveyor

Title

MAY 17, 2019

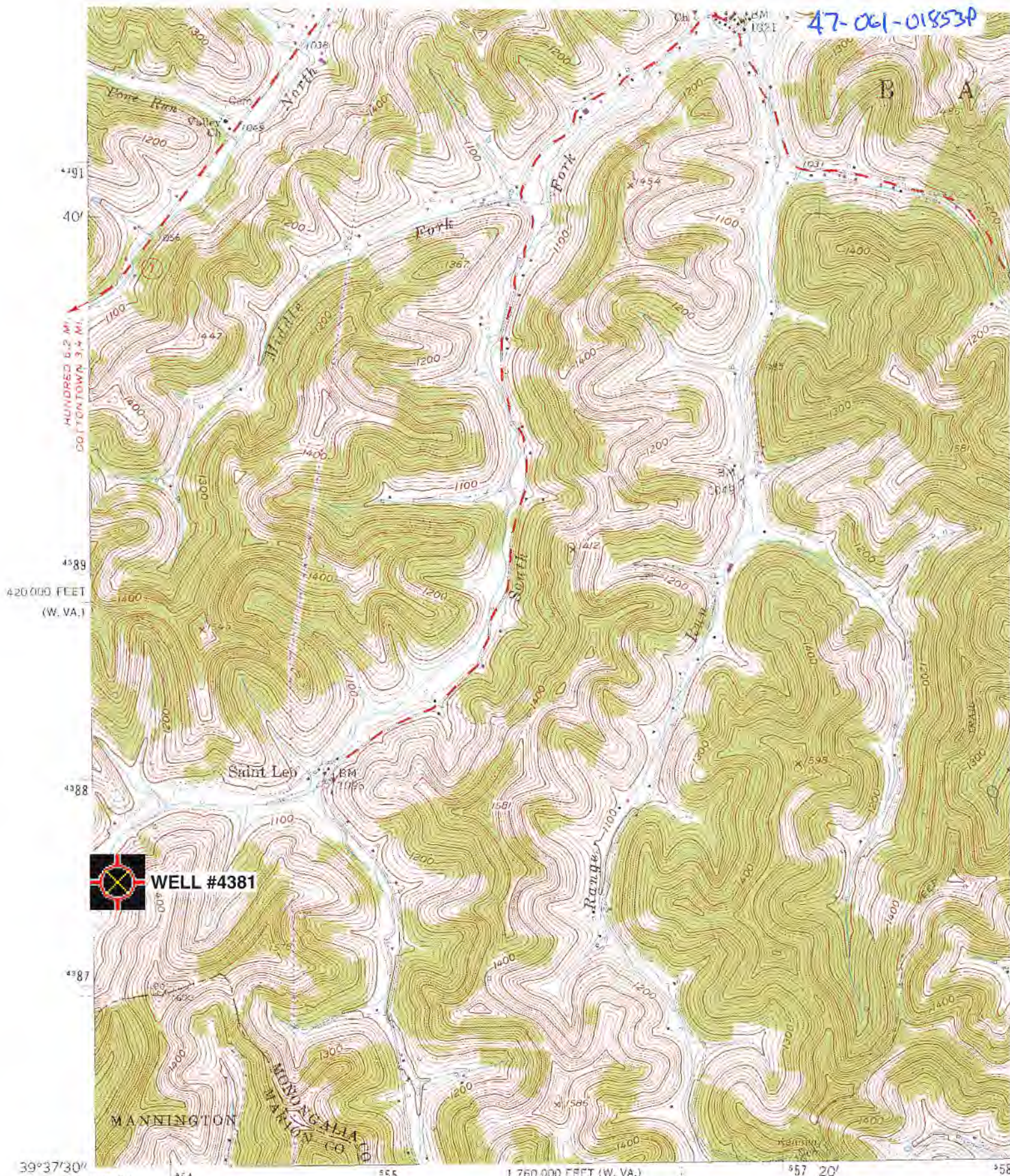
Date

RECEIVED
Office of Oil and Gas

MAY 24 2019

WV Department of
Environmental Protection

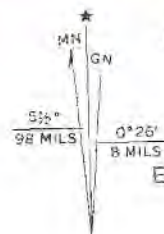
47-061-01853A



 **WELL #4381**

Mapped, edited, and published by the Geological Survey
 Control by USGS and USC&GS
 Topography from aerial photographs by photogrammetric methods
 Aerial photographs taken 1956, Field check 1958

Polyconic projection. 1927 North American datum
 10,000-foot grids based on West Virginia coordinate system,
 north zone, and Pennsylvania coordinate system, south zone
 Wadestown; WV, PA' Scale: 1" = 0.379Mi 610Mt 2,000Ft, 1 Mi = 2.640", 1 cm = 240Mt



RECEIVED
 Office of Oil and Gas

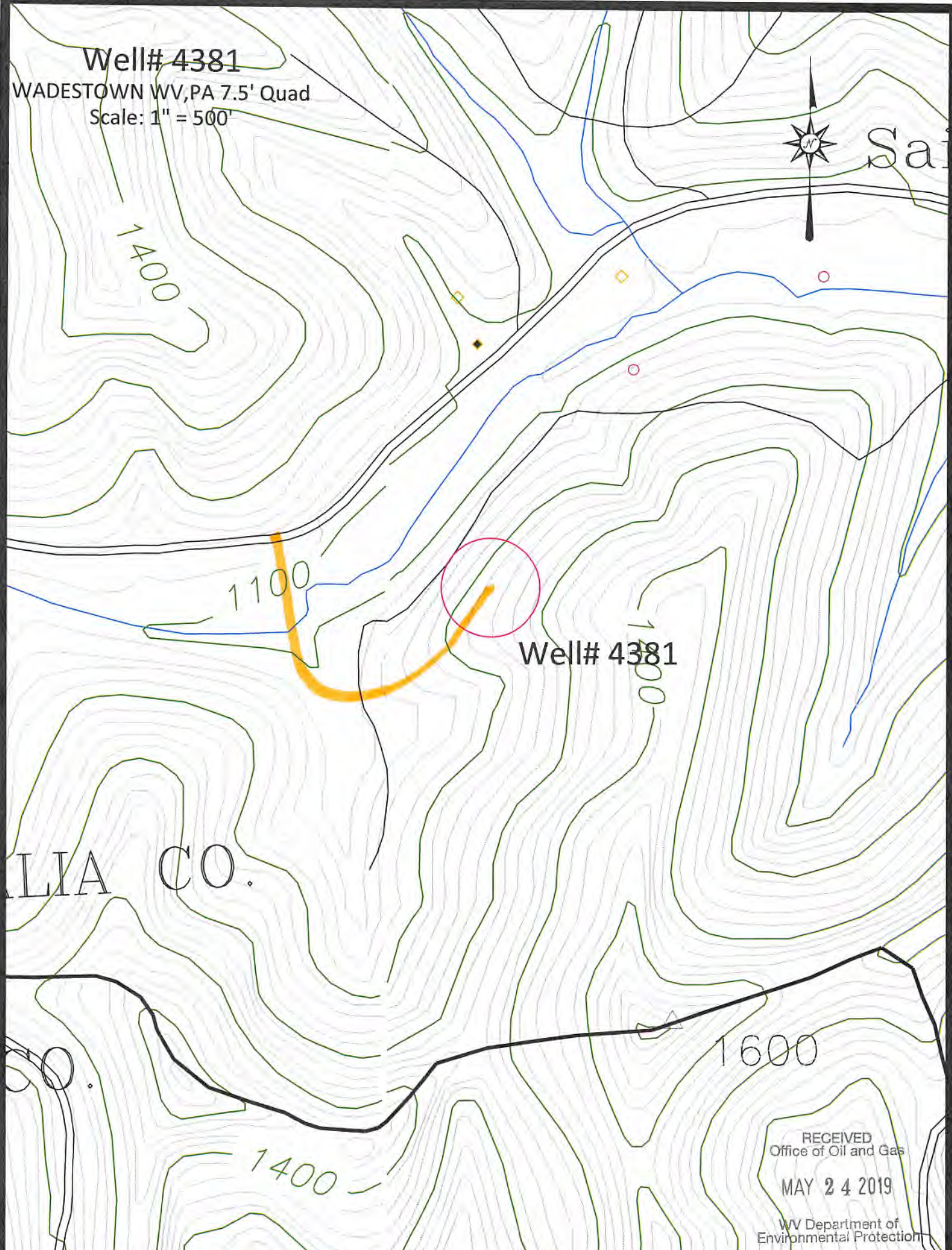
MAY 24 2019

WV Department of
 Environmental Protection



(GLOVERGAP)
 4963 III SW

Well# 4381
WADESTOWN WV, PA 7.5' Quad
Scale: 1" = 500'




Well# 4381

ALIA CO.

1600

1400

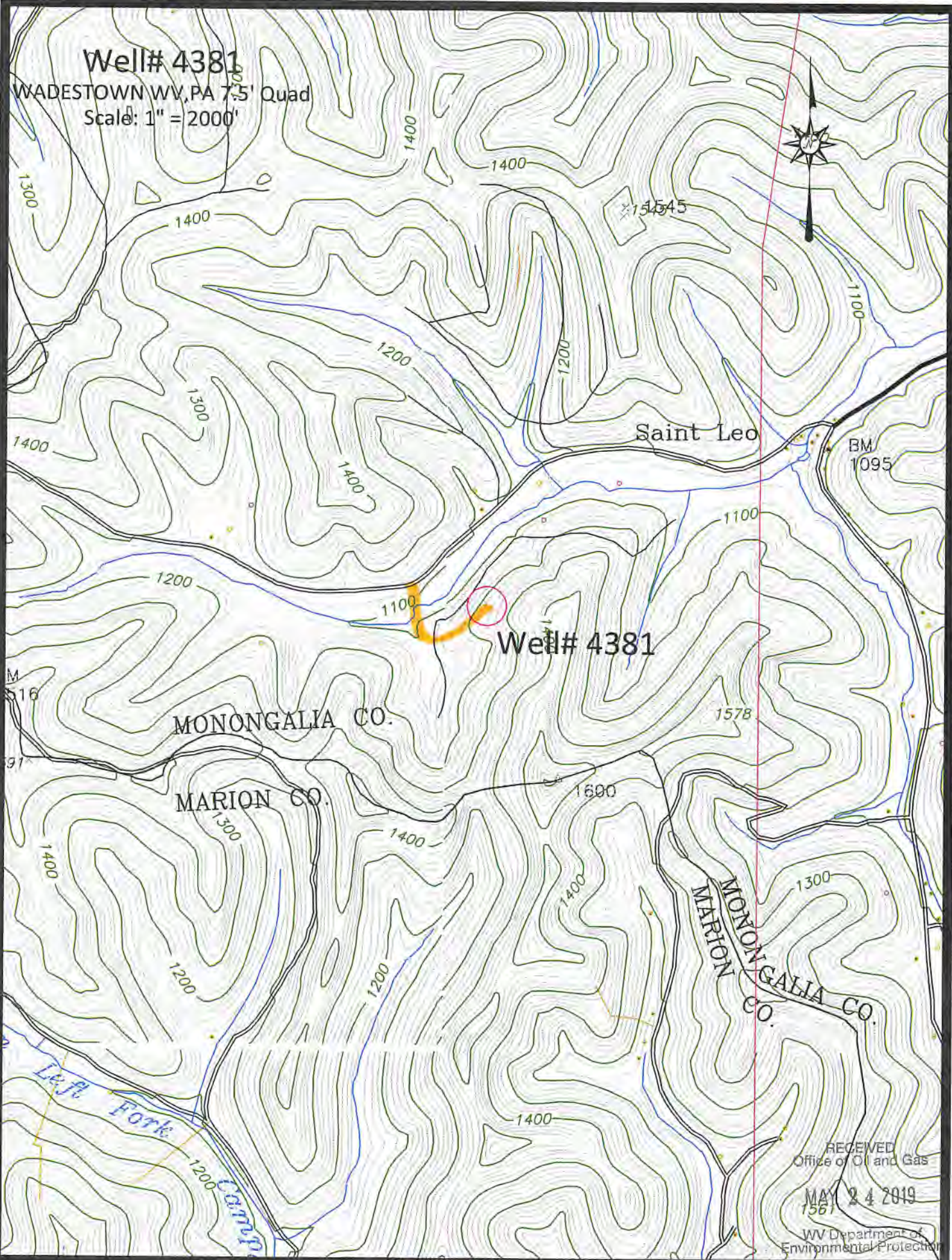
RECEIVED
Office of Oil and Gas
MAY 24 2019
WV Department of
Environmental Protection

 Access Road

Well# 4381

WADESTOWN WV, PA 7.5' Quad

Scale: 1" = 2000'



Well# 4381

MONONGALIA CO.

MARION CO.

MONONGALIA CO.
MARION CO.

Saint Leo

BM
1095

RECEIVED
Office of Oil and Gas

MAY 24 2019
1561

WV Department of
Environmental Protection

Access Road