



West Virginia Department of Environmental Protection
Office of Oil and Gas

WELL LOCATION FORM: GPS

API: 47-061-01827 WELL NO.: 4375

FARM NAME: MARY J. STRAIGHT & SAM L. DULANEY

RESPONSIBLE PARTY NAME: CONSOLIDATION COAL COMPANY

COUNTY: Monongalia DISTRICT: Battelle

QUADRANGLE: WADESTOWN WV, PA 7.5'

SURFACE OWNER: CONSOL MINING COMPANY LLC. (C/O MURRAY AMERICAN ENERGY INC.)

ROYALTY OWNER: _____

UTM GPS NORTHING: 4,388,564 m

UTM GPS EASTING: 553,928 m GPS ELEVATION: 350 m (1148')

The Responsible Party named above has chosen to submit GPS coordinates in lieu of preparing a new well location plat for a plugging permit or assigned API number on the above well. The Office of Oil and Gas will not accept GPS coordinates that do not meet the following requirements:

- Datum: NAD 1983, Zone: 17 North, Coordinate Units: meters, Altitude: height above mean sea level (MSL) – meters.
- Accuracy to Datum – 3.05 meters
- Data Collection Method:

Survey grade GPS _____: Post Processed Differential _____

Real-Time Differential _____

Mapping Grade GPS X: Post Processed Differential X

Real-Time Differential _____

- Letter size copy of the topography map showing the well location.

I the undersigned, hereby certify this data is correct to the best of my knowledge and belief and shows all the information required by law and the regulations issued and prescribed by the Office of Oil and Gas.

RECEIVED
Office of Oil and Gas

DEC 20 2018

WV Department of
Environmental Protection

Signature

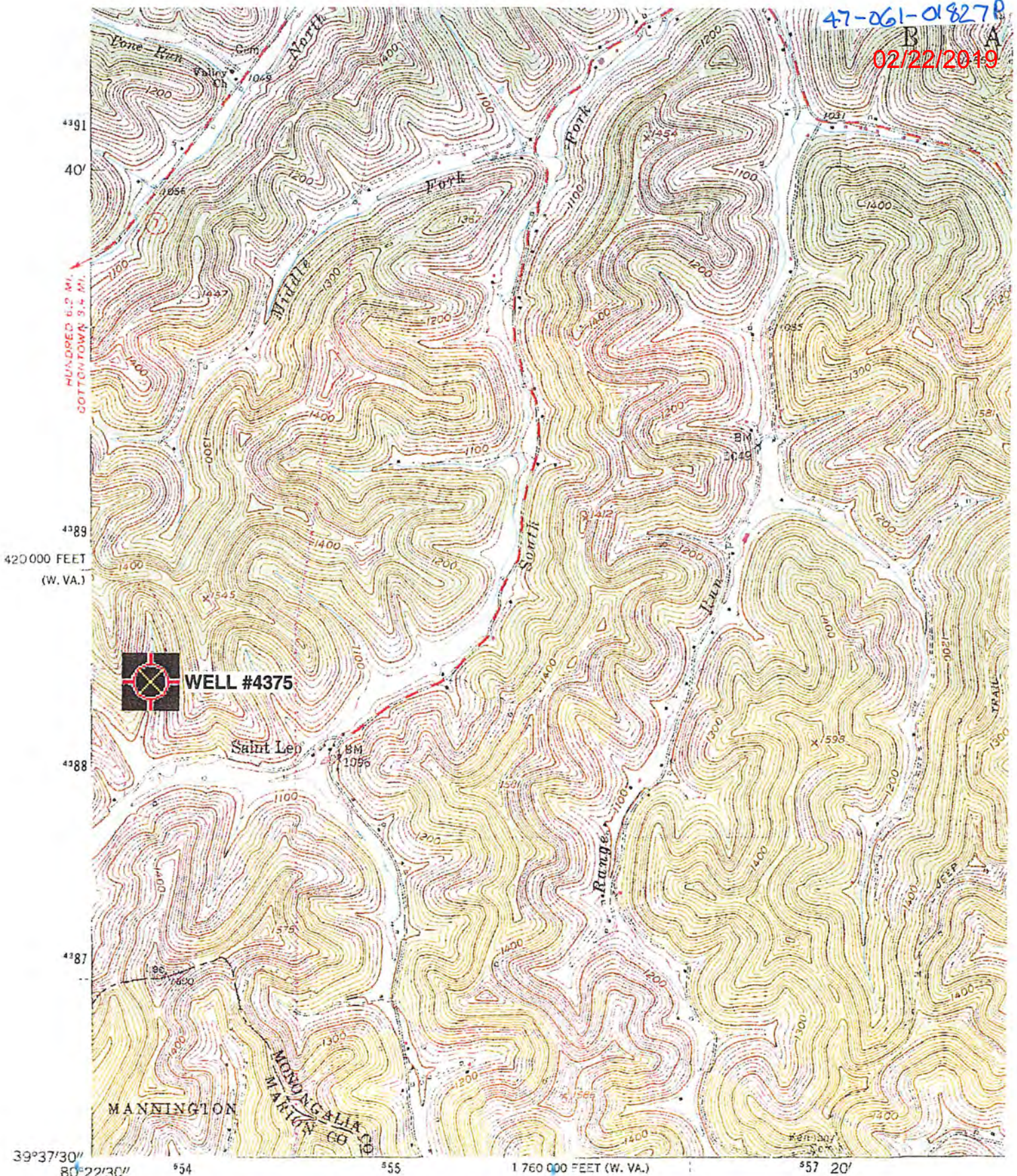
Professional Surveyor

DECEMBER 14, 2018

Title

Date

47-061-01827P
02/22/2019



WELL #4375

Saint Leo

MANNINGTON

MONONGALIA CO
MARION CO

420 000 FEET (W. VA.)
39°37'30" 80°22'30" 54 55 1 760 000 FEET (W. VA.) 57 20'

(GLOVERGAP)
4983 ft SW

Mapped, edited, and published by the Geological Survey
Control by USGS and USC&GS
Topography from aerial photographs by photogrammetric methods
Aerial photographs taken 1956. Field check 1958
Polyconic projection. 1927 North American datum
10,000-foot grids based on West Virginia coordinate system,
north zone, and Pennsylvania coordinate system, south zone
1000-meter Universal Transverse Mercator grid ticks,
zone 17, shown in blue

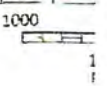


LTM GRID AND 1976 MAGNETIC NORTH
DECLINATION AT CENTER OF SHEET

RECEIVED
Office of Oil and Gas

DEC 20 2018

WV Department of
Environmental Protection



'adestown; WV,PA' Scale: 1" = 0.379Mi 610Mt 2,000Ft, 1 Mi = 2.640" , 1 cm = 240Mt