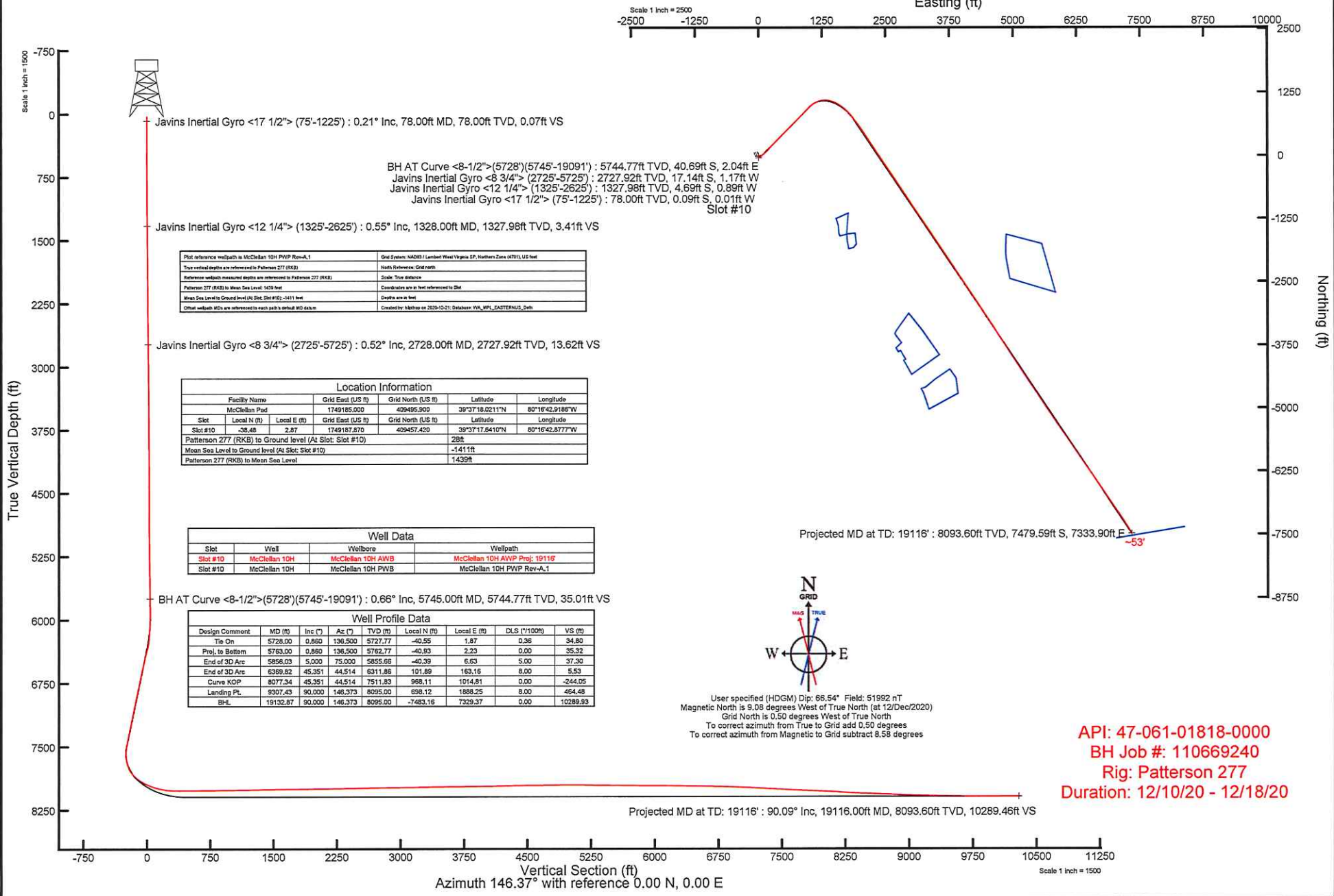


NORTHEAST NATURAL ENERGY, LLC

Location: Monongalia County, WV
 Field: Monongalia
 Facility: McClellan Pad

Slot: Slot #10
 Well: McClellan 10H
 Wellbore: McClellan 10H PWB



Javins Inertial Gyro <17 1/2"> (75'-1225') : 0.21° Inc, 78.00ft MD, 78.00ft TVD, 0.07ft VS

BH AT Curve <8-1/2">(5728')(5745'-19091') : 5744.77ft TVD, 40.69ft S, 2.04ft E
 Javins Inertial Gyro <8 3/4"> (2725'-5725') : 2727.92ft TVD, 17.14ft S, 1.17ft W
 Javins Inertial Gyro <12 1/4"> (1325'-2625') : 1327.98ft TVD, 4.69ft S, 0.89ft W
 Javins Inertial Gyro <17 1/2"> (75'-1225') : 78.00ft TVD, 0.09ft S, 0.01ft W
 Slot #10

Javins Inertial Gyro <12 1/4"> (1325'-2625') : 0.55° Inc, 1328.00ft MD, 1327.98ft TVD, 3.41ft VS

Plot reference wellpath is McClellan 10H PWP Rev-A.1	Grid System: NAD83 / Lambert West Virginia (P, Northern Zone (4701), US feet)
True vertical depths are referenced to Patterson 277 (RKB)	North Reference: Grid north
Reference wellpath measured depths are referenced to Patterson 277 (RKB)	Scale: True distance
Patterson 277 (RKB) to Mean Sea Level: 1439ft	Coordinates are in feet referenced to Slot
Mean Sea Level to Ground level (At Slot: Slot #10): -1411ft	Depth is in feet
Other wellpath MDs are referenced to each path's actual MD datum	Created by: hhh@bakerhughes.com 2020-10-21; Database: WA_WPL_EASTERNUS_Dwh

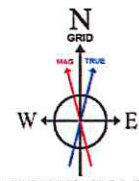
Javins Inertial Gyro <8 3/4"> (2725'-5725') : 0.52° Inc, 2728.00ft MD, 2727.92ft TVD, 13.62ft VS

Location information				
Facility Name	Grid East (US ft)	Grid North (US ft)	Latitude	Longitude
McClellan Pad	1749185.000	429495.900	39°37'18.0211"N	80°16'42.9189"W
Slot	Local E (ft)	Local N (ft)	Latitude	Longitude
Slot #10	-38.48	2.87	1749187.870	429457.420
Patterson 277 (RKB) to Ground level (At Slot: Slot #10)			28ft	
Mean Sea Level to Ground level (At Slot: Slot #10)			-1411ft	
Patterson 277 (RKB) to Mean Sea Level			1439ft	

Well Data			
Slot	Well	Wellbore	Wellpath
Slot #10	McClellan 10H	McClellan 10H AWB	McClellan 10H AWP Proj: 19116'
Slot #10	McClellan 10H	McClellan 10H PWB	McClellan 10H PWP Rev-A.1

BH AT Curve <8-1/2">(5728')(5745'-19091') : 0.66° Inc, 5745.00ft MD, 5744.77ft TVD, 35.01ft VS

Well Profile Data								
Design Comment	MD (ft)	Inc (°)	Az (°)	TVD (ft)	Local N (ft)	Local E (ft)	DLS (Y/100ft)	VS (ft)
Tie On	5728.00	0.660	136.500	5727.77	-40.55	1.87	0.06	34.80
Proj. to Bottom	5763.00	0.660	136.500	5762.77	-40.93	2.23	0.00	35.32
End of 3D Arc	5856.03	5.000	75.000	5855.66	-40.39	6.63	5.00	37.30
End of 3D Arc	6369.82	45.351	44.514	6311.86	101.89	163.16	8.00	5.53
Curve KOP	8077.34	45.351	44.514	7511.83	968.11	1014.81	0.00	-244.05
Landing Pt.	9307.43	90.000	146.373	8095.00	698.12	1888.25	8.00	464.48
BHL	19132.87	90.000	146.373	8095.00	-7483.16	7329.37	0.00	10289.53



User specified (HDGM) Dip: 66.54° Field: 51992 nT
 Magnetic North is 9.08 degrees West of True North (at 12/Dec/2020)
 Grid North is 0.50 degrees West of True North
 To correct azimuth from True to Grid add 0.50 degrees
 To correct azimuth from Magnetic to Grid subtract 8.58 degrees

API: 47-061-01818-0000
 BH Job #: 110669240
 Rig: Patterson 277
 Duration: 12/10/20 - 12/18/20

Projected MD at TD: 19116' : 90.09° Inc, 19116.00ft MD, 8093.60ft TVD, 10289.46ft VS

Vertical Section (ft)
 Azimuth 146.37° with reference 0.00 N, 0.00 E