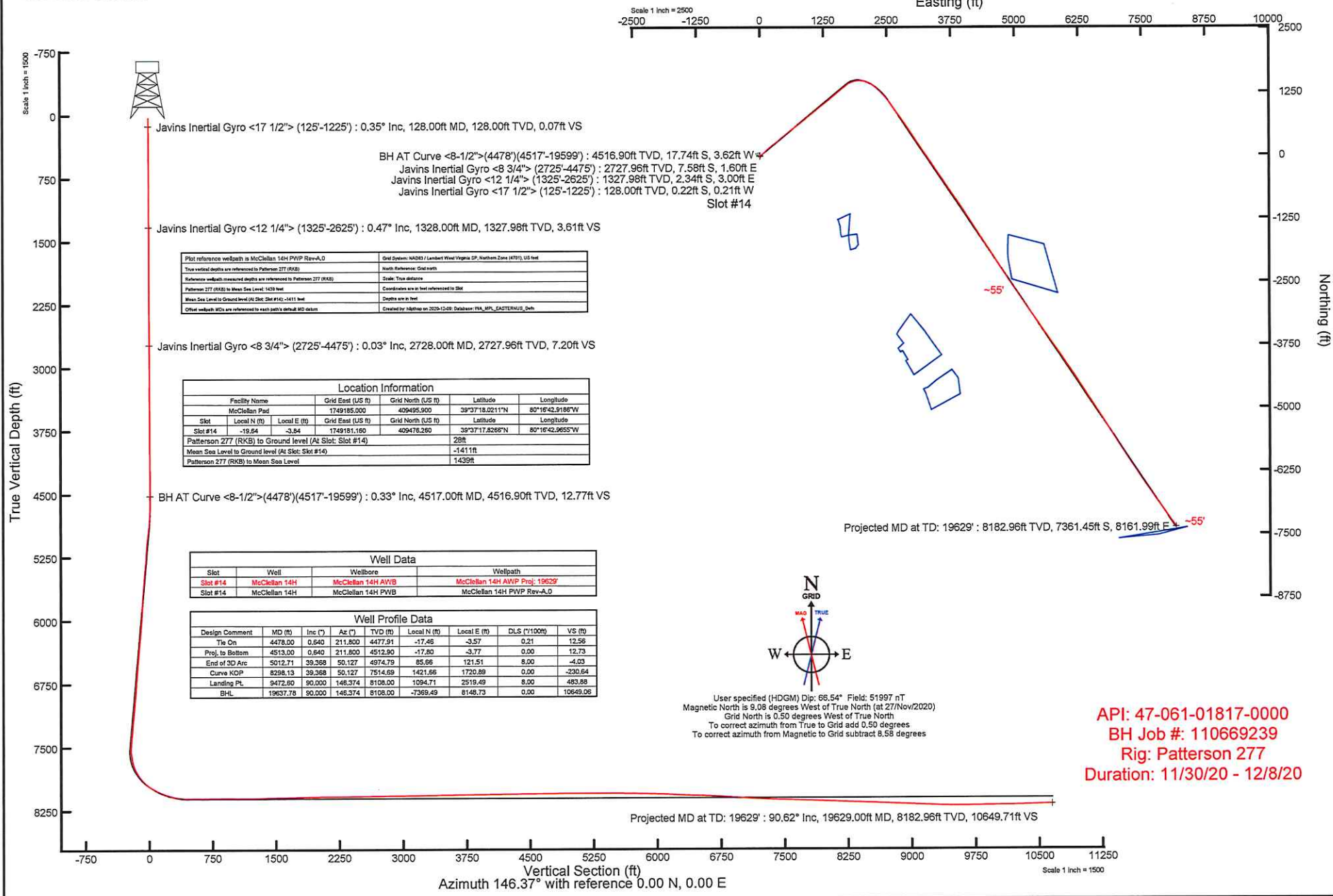


# NORTHEAST NATURAL ENERGY, LLC

Location: Monongalia County, WV  
 Field: Monongalia  
 Facility: McClellan Pad

Slot: Slot #14  
 Well: McClellan 14H  
 Wellbore: McClellan 14H PWB

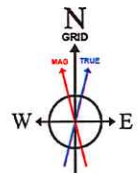


Plot reference wellpath is McClellan 14H PWB Rev-A_0	Grid System: NAD83 / Lambert West Virginia SP, Northern Zone (N79), US feet
True vertical depths are referenced to Patterson 277 (RKB)	North Reference: Grid north
Reference wellbore measured depths are referenced to Patterson 277 (RKB)	Scale: True distance
Patterson 277 (RKB) to Mean Sea Level: 1411 feet	Coordinates are in feet referenced to GRS
Mean Sea Level to Ground level (At Slot #14): -1411 feet	Depths are in feet
Other wellbore MDs are referenced to each well's default MD datum	Created by: Alghem on 2023-12-09; Database: PWA_MPL_EASTERNUS_Dat

Location Information				
Facility Name	Grid East (US ft)	Grid North (US ft)	Latitude	Longitude
McClellan Pad	1749185.000	409495.000	39°37'18.02117"N	80°16'42.9198"W
Slot #14	Local E (ft)	Local N (ft)	Latitude	Longitude
Slot #14	-19.84	-3.84	1749181.160	409476.260
Patterson 277 (RKB) to Ground level (At Slot: Slot #14)			28ft	
Mean Sea Level to Ground level (At Slot: Slot #14)			-1411ft	
Patterson 277 (RKB) to Mean Sea Level			1439ft	

Well Data			
Slot	Well	Wellbore	Wellpath
Slot #14	McClellan 14H	McClellan 14H AWB	McClellan 14H AWP Proj: 19629
Slot #14	McClellan 14H	McClellan 14H PWB	McClellan 14H PWP Rev-A_0

Well Profile Data								
Design Comment	MD (ft)	Inc (°)	Az (°)	TVD (ft)	Local N (ft)	Local E (ft)	DLS (°/100ft)	VS (ft)
Tie On	4478.00	0.640	211.800	4477.91	-17.46	-3.57	0.21	12.58
Prof. to Bottom	4513.00	0.640	211.800	4512.90	-17.80	-3.77	0.00	12.73
End of 3D Arc	5012.71	39.368	50.127	4974.79	85.06	121.51	8.00	-4.03
Curve KOP	8298.13	39.368	50.127	7514.59	1421.66	1720.89	0.00	-230.64
Landing Pt.	9472.80	90.000	146.374	8108.00	1094.71	2519.49	8.00	-483.88
BHL	19637.78	90.000	146.374	8108.00	-7369.49	8148.73	0.00	10649.06



User specified (HDGM) Dip: 66.54° Field: 51997 nT  
 Magnetic North is 9.08 degrees West of True North (at 27/Nov/2020)  
 Grid North is 0.50 degrees West of True North  
 To correct azimuth from True to Grid add 0.50 degrees  
 To correct azimuth from Magnetic to Grid subtract 8.58 degrees

API: 47-061-01817-0000  
 BH Job #: 110669239  
 Rig: Patterson 277  
 Duration: 11/30/20 - 12/8/20

Projected MD at TD: 19629° : 90.62° Inc, 19629.00ft MD, 8182.96ft TVD, 10649.71ft VS

Vertical Section (ft)  
 Azimuth 146.37° with reference 0.00 N, 0.00 E

Scale 1 inch = 1500