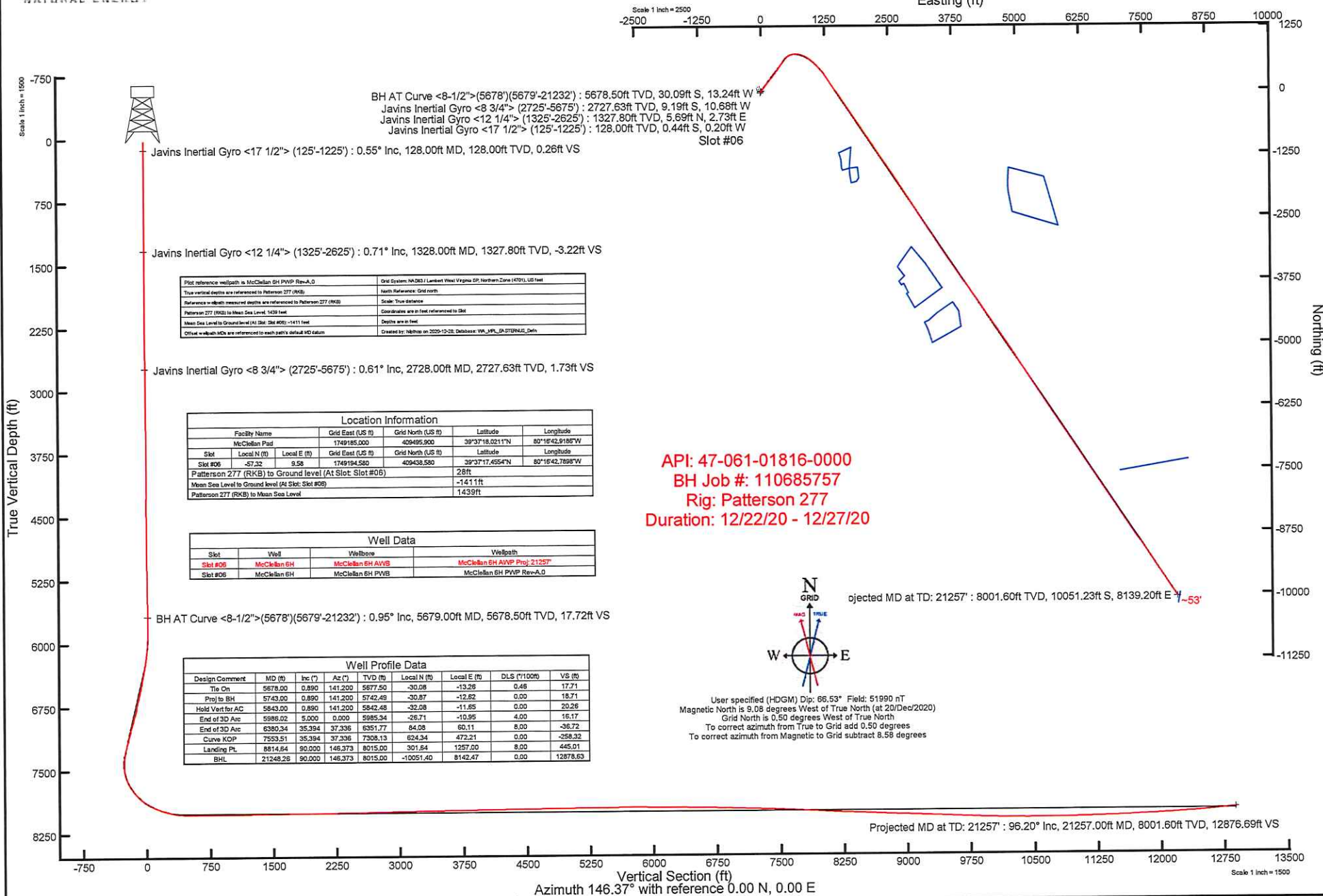


NORTHEAST NATURAL ENERGY, LLC

Location: Monongalia County, WV
 Field: Monongalia
 Facility: McClellan Pad

Slot: Slot #06
 Well: McClellan 6H
 Wellbore: McClellan 6H PWB



BH AT Curve <8-1/2">(5678')(5679'-21232') : 5678.50ft TVD, 30.09ft S, 13.24ft W
 Javins Inertial Gyro <8 3/4"> (2725'-5675') : 2727.63ft TVD, 9.19ft S, 10.68ft W
 Javins Inertial Gyro <12 1/4"> (1325'-2625') : 1327.80ft TVD, 5.69ft N, 2.73ft E
 Javins Inertial Gyro <17 1/2"> (125'-1225') : 128.00ft TVD, 0.44ft S, 0.20ft W
 Slot #06

Javins Inertial Gyro <17 1/2"> (125'-1225') : 0.55° Inc, 128.00ft MD, 128.00ft TVD, 0.26ft VS

Javins Inertial Gyro <12 1/4"> (1325'-2625') : 0.71° Inc, 1328.00ft MD, 1327.80ft TVD, -3.22ft VS

Javins Inertial Gyro <8 3/4"> (2725'-5675') : 0.61° Inc, 2728.00ft MD, 2727.63ft TVD, 1.73ft VS

BH AT Curve <8-1/2">(5678')(5679'-21232') : 0.95° Inc, 5679.00ft MD, 5678.50ft TVD, 17.72ft VS

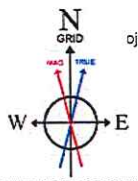
Plot reference wellpath is McClellan 6H PWB Rev-A.0	Grid System: NAD83 / Lambert West Virginia SP, Northern Zone (4701), US feet
True vertical depths are referenced to Patterson 277 (RKB)	North Reference: Grid North
Reference w depth measured depths are referenced to Patterson 277 (RKB)	Scale: True Distance
Patterson 277 (RKB) to Mean Sea Level: 1439 feet	Coordinates are in feet referenced to GMA
Mean Sea Level to Ground level (At Slot #06) : -1411 feet	Depths are in feet
Offset wellbore MDs are referenced to each path's default MD datum	Created by: Natrix on 2020-12-02; Database: WV_MPL_SA_2728NAUS_Data

Location Information					
Facility Name		Grid East (US ft)	Grid North (US ft)	Latitude	Longitude
McClellan Pad		1749185.000	409495.900	39°37'18.0211"N	80°16'42.9188"W
Slot	Local N (ft)	Local E (ft)	Grid East (US ft)	Grid North (US ft)	Longitude
Slot #06	-57.32	9.58	1749184.580	409438.580	80°16'42.7898"W
Patterson 277 (RKB) to Ground level (At Slot #06)				28ft	
Mean Sea Level to Ground level (At Slot #06)				-1411ft	
Patterson 277 (RKB) to Mean Sea Level				1439ft	

Well Data			
Slot	Well	Wellbore	Wellpath
Slot #06	McClellan 6H	McClellan 6H AWB	McClellan 6H AWB Proj: 21257'
Slot #06	McClellan 6H	McClellan 6H PWB	McClellan 6H PWB Rev-A.0

Well Profile Data							
Design Comment	MD (ft)	Inc (°)	Az (°)	TVD (ft)	Local N (ft)	Local E (ft)	VS (ft)
Tie On	5678.00	0.890	141.200	5677.50	-30.08	-13.26	0.48
Proj to BH	5743.00	0.890	141.200	5742.48	-30.87	-12.82	0.00
Hold Vert for AC	5843.00	0.890	141.200	5842.48	-32.08	-11.85	0.00
End of 3D Arc	5986.02	5.000	0.000	5985.34	-26.71	-10.95	4.00
End of 3D Arc	6380.34	35.394	37.336	6351.77	84.08	60.11	8.00
Curve KOP	7530.51	35.394	37.336	7308.13	624.34	472.21	0.00
Landing Pt.	8814.64	90.000	146.373	8015.00	301.64	1267.00	8.00
BHL	21248.26	90.000	146.373	8015.00	-10051.40	8142.47	0.00

API: 47-061-01816-0000
 BH Job #: 110685757
 Rig: Patterson 277
 Duration: 12/22/20 - 12/27/20



User specified (HDGM) Dip: 66.53° Field: 51990 nT
 Magnetic North is 9.05 degrees West of True North (at 20/Dec/2020)
 Grid North is 0.50 degrees West of True North
 To correct azimuth from True to Grid add 0.50 degrees
 To correct azimuth from Magnetic to Grid subtract 8.55 degrees

Projected MD at TD: 21257' : 8001.60ft TVD, 10051.23ft S, 8139.20ft E γ_{-53}

Projected MD at TD: 21257' : 96.20° Inc, 21257.00ft MD, 8001.60ft TVD, 12876.69ft VS

Azimuth 146.37° with reference 0.00 N, 0.00 E