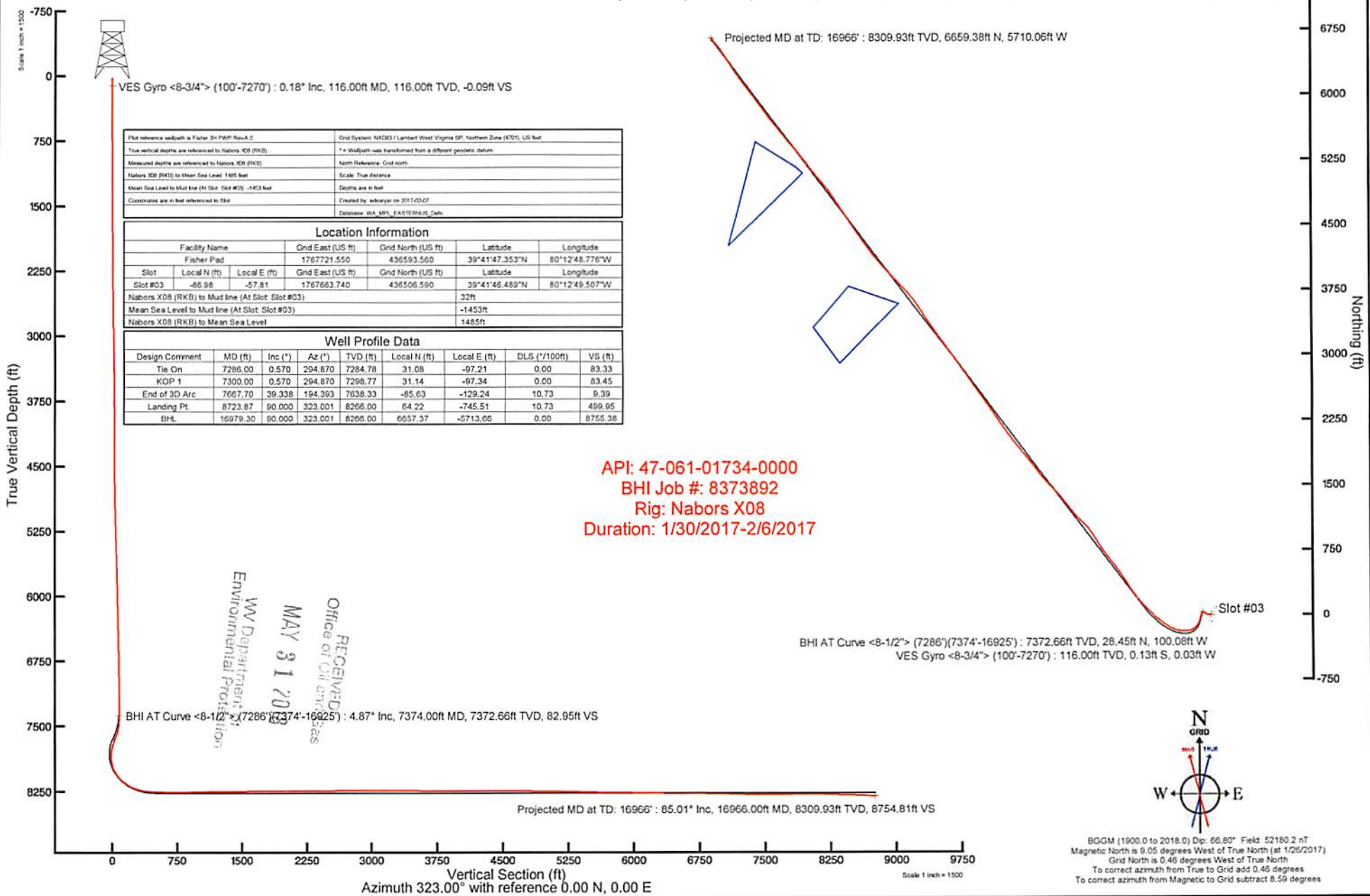


NORTHEAST NATURAL ENERGY, LLC

Location: Monongalia County, WV
 Field: Monongalia
 Facility: Fisher Pad

Slot: Slot #03
 Well: Fisher 3H
 Wellbore: Fisher 3H PWB

Scale 1 inch = 1500
 Easting (ft)
 -6750 -6000 -5250 -4500 -3750 -3000 -2250 -1500 -750 0 750



VES Gyro <8-3/4"> (100'-7270') : 0.18° Inc, 116.00ft MD, 116.00ft TVD, -0.09ft VS

Plot reference wellpath is Fisher 3H PWB Rev.4.0	Grid System: NAD83 / Lambert West Virginia SP, Northern Zone (470), US feet
True vertical depths are referenced to Nabors X08 (RKB)	** Wellpath was transformed from a different geoidic datum
Measured depths are referenced to Nabors X08 (RKB)	North Reference: Grid north
Nabors X08 (RKB) to Mean Sea Level: 1465 feet	Scale: True distance
Mean Sea Level to Mud line (At Slot: Slot #03): -1453 feet	Depth are in feet
Coordinates are in feet referenced to Slot	Created by: adkay on 2017-03-07
	Database: WA, MN, EASTERNUS, Cells

Location Information				
Facility Name	Grid East (US ft)	Grid North (US ft)	Latitude	Longitude
Fisher Pad	1767721.550	436593.560	39°41'47.353"N	80°12'48.776"W
Slot	Local N (ft)	Local E (ft)	Latitude	Longitude
Slot #03	-86.98	-57.81	39°41'46.489"N	80°12'49.507"W
Nabors X08 (RKB) to Mud line (At Slot: Slot#03)		32ft		
Mean Sea Level to Mud line (At Slot: Slot#03)		-1453ft		
Nabors X08 (RKB) to Mean Sea Level		1485ft		

Well Profile Data								
Design Comment	MD (ft)	Inc (")	Az (°)	TVD (ft)	Local N (ft)	Local E (ft)	DLS (°/100ft)	VS (ft)
Tie On	7286.00	0.570	294.870	7284.78	31.08	-97.21	0.00	83.33
KOP 1	7300.00	0.570	294.870	7298.77	31.14	-97.34	0.00	83.45
End of 3D Arc	7667.70	39.338	194.393	7638.33	-85.63	-129.24	10.73	9.39
Landing Pt	8723.87	90.000	323.001	8266.00	64.22	-745.51	10.73	499.95
BHL	16979.30	90.000	323.001	8266.00	6057.37	-5713.66	0.00	8755.38

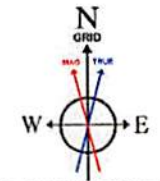
API: 47-061-01734-0000
 BHI Job #: 8373892
 Rig: Nabors X08
 Duration: 1/30/2017-2/6/2017

BHI AT Curve <8-1/2"> (7286')(7374'-16925') : 4.87° Inc, 7374.00ft MD, 7372.66ft TVD, 82.95ft VS

BHI AT Curve <8-1/2"> (7286')(7374'-16925') : 7372.66ft TVD, 28.45ft N, 100.08ft W
 VES Gyro <8-3/4"> (100'-7270') : 116.00ft TVD, 0.13ft S, 0.03ft W

Projected MD at TD: 16966' : 85.01° Inc, 16966.00ft MD, 8309.93ft TVD, 8754.81ft VS

RECEIVED
 Office of Oil and Gas
 MAY 31 2018
 WV Department of Environmental Protection



BGGM (1900.0 to 2018.0) Dip: 66.80° Field: 52180.2 nT
 Magnetic North is 9.05 degrees West of True North (at 1/26/2017)
 Grid North is 0.46 degrees West of True North
 To correct azimuth from True to Grid add 0.46 degrees
 To correct azimuth from Magnetic to Grid subtract 8.59 degrees

Vertical Section (ft)
 Azimuth 323.00° with reference 0.00 N, 0.00 E

Scale 1 inch = 1500



Actual Wellpath Report

Fisher 3H AWP Proj: 16966'

Page 1 of 10



REFERENCE WELLPATH IDENTIFICATION

Operator	NORTHEAST NATURAL ENERGY, LLC	Slot	Slot #03
Area	Monongalia County, WV	Well	Fisher 3H
Field	Monongalia	Wellbore	Fisher 3H AWB
Facility	Fisher Pad		

REPORT SETUP INFORMATION

Projection System	NAD83 / Lambert West Virginia SP, Northern Zone (4701), US feet	Software System	WellArchitect® 5.0
North Reference	Grid	User	Edsaryar
Scale	0.999941	Report Generated	2/7/2017 at 2:30:21 PM
Convergence at slot	0.46° West	Database/Source file	WA_MPL_EASTERNUS_Defn/Fisher_3H_AWP_Proj_16966_.xml

WELLPATH LOCATION

	Local coordinates		Grid coordinates		Geographic coordinates	
	North[ft]	East[ft]	Easting[US ft]	Northing[US ft]	Latitude	Longitude
Slot Location	-86.98	-57.81	1767663.74	436506.59	39°41'46.489"N	80°12'49.507"W
Facility Reference Pt			1767721.55	436593.56	39°41'47.353"N	80°12'48.776"W
Field Reference Pt			1777685.71	440640.65	39°42'28.114"N	80°10'41.690"W

WELLPATH DATUM

Calculation method	Minimum curvature	Nabors X08 (RKB) to Facility Vertical Datum	1485.00ft
Horizontal Reference Pt	Slot	Nabors X08 (RKB) to Mean Sea Level	1485.00ft
Vertical Reference Pt	Nabors X08 (RKB)	Nabors X08 (RKB) to Mud Line at Slot (Slot #03)	32.00ft
MD Reference Pt	Nabors X08 (RKB)	Section Origin	N 0.00, E 0.00 ft
Field Vertical Reference	Mean Sea Level	Section Azimuth	323.00°

RECEIVED
 Office of Oil and Gas
 MAY 31 2018
 WV Department of
 Environmental Protection



Actual Wellpath Report

Fisher 3H AWP Proj: 16966'

Page 2 of 10



REFERENCE WELLPATH IDENTIFICATION			
Operator	NORTHEAST NATURAL ENERGY, LLC	Slot	Slot #03
Area	Monongalia County, WV	Well	Fisher 3H
Field	Monongalia	Wellbore	Fisher 3H AWB
Facility	Fisher Pad		

WELLPATH DATA (178 stations) † = interpolated/extrapolated station															
MD [ft]	Inclination [°]	Azimuth [°]	TVD [ft]	Vert Sect [ft]	North [ft]	East [ft]	Grid East [US ft]	Grid North [US ft]	Latitude	Longitude	Closure Dist [ft]	Closure Dir [°]	DLS [°/100ft]	Build Rate [°/100ft]	Turn Rate [°/100ft]
0.00	0.000	192.760	0.00	0.00	0.00	0.00	1767663.74	436506.59	39°41'46.489"N	80°12'49.507"W	0.00	0.000	0.00	0.00	0.00
32.00	0.000	192.760	32.00	0.00	0.00	0.00	1767663.74	436506.59	39°41'46.489"N	80°12'49.507"W	0.00	0.000	0.00	0.00	0.00
116.00	0.180	192.760	116.00	-0.09	-0.13	-0.03	1767663.71	436506.46	39°41'46.488"N	80°12'49.508"W	0.13	192.760	0.21	0.21	-199.10
216.00	0.260	226.150	216.00	-0.21	-0.44	-0.23	1767663.51	436506.15	39°41'46.485"N	80°12'49.510"W	0.49	207.386	0.15	0.08	33.39
316.00	0.180	146.530	316.00	-0.40	-0.73	-0.30	1767663.44	436505.86	39°41'46.482"N	80°12'49.511"W	0.79	202.715	0.29	-0.08	-79.62
416.00	0.110	86.540	416.00	-0.61	-0.85	-0.12	1767663.62	436505.74	39°41'46.481"N	80°12'49.509"W	0.86	188.145	0.16	-0.07	-59.99
516.00	0.130	332.700	516.00	-0.55	-0.75	-0.08	1767663.66	436505.84	39°41'46.482"N	80°12'49.508"W	0.75	185.987	0.20	0.02	-113.84
616.00	0.350	335.500	616.00	-0.14	-0.37	-0.26	1767663.48	436506.22	39°41'46.486"N	80°12'49.510"W	0.45	214.980	0.22	0.22	2.80
716.00	0.230	351.030	716.00	0.34	0.11	-0.41	1767663.33	436506.70	39°41'46.490"N	80°12'49.512"W	0.43	284.721	0.14	-0.12	15.53
816.00	0.220	327.420	816.00	0.71	0.47	-0.55	1767663.19	436507.06	39°41'46.494"N	80°12'49.514"W	0.72	310.481	0.09	-0.01	-23.61
916.00	0.300	330.620	915.99	1.16	0.86	-0.78	1767662.96	436507.45	39°41'46.498"N	80°12'49.517"W	1.16	317.708	0.08	0.08	3.20
1016.00	0.240	319.800	1015.99	1.62	1.25	-1.04	1767662.70	436507.84	39°41'46.501"N	80°12'49.521"W	1.63	320.038	0.08	-0.06	-10.82
1116.00	0.160	38.940	1115.99	1.87	1.52	-1.09	1767662.65	436508.11	39°41'46.504"N	80°12'49.521"W	1.87	324.217	0.26	-0.08	79.14
1216.00	0.200	36.490	1215.99	1.95	1.76	-0.90	1767662.84	436508.35	39°41'46.507"N	80°12'49.519"W	1.98	332.954	0.04	0.04	-2.45
1316.00	0.100	126.490	1315.99	1.92	1.85	-0.73	1767663.01	436508.44	39°41'46.507"N	80°12'49.517"W	1.99	338.580	0.22	-0.10	90.00
1416.00	0.330	260.180	1415.99	1.97	1.75	-0.94	1767662.80	436508.34	39°41'46.506"N	80°12'49.519"W	1.99	331.771	0.41	0.23	133.69
1516.00	0.750	256.520	1515.99	2.36	1.55	-1.86	1767661.88	436508.14	39°41'46.504"N	80°12'49.531"W	2.42	309.799	0.42	0.42	-3.66
1616.00	1.070	267.840	1615.97	3.15	1.36	-3.43	1767660.31	436507.95	39°41'46.502"N	80°12'49.551"W	3.69	291.663	0.37	0.32	11.32
1716.00	1.380	269.150	1715.95	4.40	1.31	-5.57	1767658.17	436507.90	39°41'46.502"N	80°12'49.579"W	5.72	283.236	0.31	0.31	1.31
1816.00	1.410	257.500	1815.92	5.62	1.03	-7.97	1767655.77	436507.62	39°41'46.499"N	80°12'49.609"W	8.04	277.328	0.28	0.03	-11.65
1916.00	1.310	239.960	1915.89	6.27	0.19	-10.16	1767653.58	436506.78	39°41'46.490"N	80°12'49.637"W	10.16	271.053	0.43	-0.10	-17.54
2016.00	1.500	243.880	2015.86	6.65	-0.96	-12.33	1767651.41	436505.63	39°41'46.479"N	80°12'49.665"W	12.37	265.539	0.21	0.19	3.92
2116.00	1.580	243.480	2115.83	7.15	-2.15	-14.74	1767649.00	436504.44	39°41'46.467"N	80°12'49.695"W	14.89	261.686	0.08	0.08	-0.40
2216.00	1.640	248.680	2215.79	7.79	-3.29	-17.30	1767646.44	436503.30	39°41'46.455"N	80°12'49.728"W	17.61	259.237	0.16	0.06	5.20
2316.00	1.820	254.590	2315.74	8.76	-4.23	-20.17	1767643.57	436502.36	39°41'46.446"N	80°12'49.765"W	20.61	258.150	0.25	0.18	5.91
2416.00	1.450	262.140	2415.70	9.96	-4.83	-22.95	1767640.79	436501.76	39°41'46.440"N	80°12'49.800"W	23.45	258.124	0.43	-0.37	7.55
2516.00	1.230	252.790	2515.67	10.94	-5.32	-25.23	1767638.51	436501.27	39°41'46.435"N	80°12'49.829"W	25.78	258.099	0.31	-0.22	-9.35
2616.00	1.110	254.500	2615.65	11.66	-5.89	-27.19	1767636.55	436500.70	39°41'46.429"N	80°12'49.854"W	27.82	257.769	0.12	-0.12	1.71
2716.00	1.130	273.990	2715.64	12.66	-6.08	-29.11	1767634.64	436500.51	39°41'46.427"N	80°12'49.879"W	29.73	258.194	0.38	0.02	19.49
2816.00	1.190	283.900	2815.64	14.11	-5.77	-31.10	1767632.64	436500.82	39°41'46.430"N	80°12'49.904"W	31.63	259.496	0.21	0.06	9.91

RECEIVED
Department of Environmental Protection
31 2018
of Oil and Gas



Actual Wellpath Report

Fisher 3H AWP Proj: 16966'

Page 3 of 10



REFERENCE WELLPATH IDENTIFICATION			
Operator	NORTHEAST NATURAL ENERGY, LLC	Slot	Slot #03
Area	Monongalia County, WV	Well	Fisher 3H
Field	Monongalia	Wellbore	Fisher 3H AWB
Facility	Fisher Pad		

WELLPATH DATA (178 stations)															
MD [ft]	Inclination [°]	Azimuth [°]	TVD [ft]	Vert Sect [ft]	North [ft]	East [ft]	Grid East [US ft]	Grid North [US ft]	Latitude	Longitude	Closure Dist [ft]	Closure Dir [°]	DLS [°/100ft]	Build Rate [°/100ft]	Turn Rate [°/100ft]
2916.00	1.140	283.660	2915.59	15.69	-5.28	-33.07	1767630.67	436501.31	39°41'46.434"N	80°12'49.930"W	33.49	260.927	0.05	-0.05	-0.24
3016.00	0.960	279.280	3015.58	17.06	-4.91	-34.87	1767628.88	436501.68	39°41'46.438"N	80°12'49.953"W	35.21	261.982	0.20	-0.18	-4.38
3116.00	0.900	276.230	3115.56	18.20	-4.69	-36.47	1767627.27	436501.90	39°41'46.440"N	80°12'49.973"W	36.77	262.671	0.08	-0.06	-3.05
3216.00	0.780	260.980	3215.55	19.06	-4.71	-37.93	1767625.82	436501.88	39°41'46.440"N	80°12'49.992"W	38.22	262.917	0.25	-0.12	-15.25
3316.00	0.480	277.120	3315.55	19.67	-4.77	-39.01	1767624.73	436501.82	39°41'46.439"N	80°12'50.006"W	39.30	263.033	0.35	-0.30	16.14
3416.00	0.660	309.080	3415.54	20.52	-4.35	-39.88	1767623.87	436502.24	39°41'46.443"N	80°12'50.017"W	40.11	263.771	0.36	0.18	31.96
3516.00	0.750	315.270	3515.53	21.73	-3.52	-40.78	1767622.96	436503.07	39°41'46.451"N	80°12'50.029"W	40.94	265.061	0.12	0.09	6.19
3616.00	0.730	313.990	3615.53	23.01	-2.62	-41.70	1767622.04	436503.97	39°41'46.460"N	80°12'50.040"W	41.79	266.409	0.03	-0.02	-1.28
3716.00	0.720	315.710	3715.52	24.26	-1.72	-42.60	1767621.14	436504.87	39°41'46.469"N	80°12'50.052"W	42.64	267.682	0.02	-0.01	1.72
3816.00	0.690	296.180	3815.51	25.42	-1.01	-43.58	1767620.16	436505.58	39°41'46.476"N	80°12'50.065"W	43.59	268.673	0.24	-0.03	-19.53
3916.00	0.590	280.590	3915.51	26.34	-0.65	-44.63	1767619.12	436505.94	39°41'46.479"N	80°12'50.078"W	44.63	269.167	0.20	-0.10	-15.59
4016.00	0.450	295.980	4015.50	27.07	-0.38	-45.48	1767618.26	436506.21	39°41'46.482"N	80°12'50.089"W	45.49	269.518	0.20	-0.14	15.39
4116.00	0.230	318.520	4115.50	27.62	-0.06	-45.97	1767617.77	436506.53	39°41'46.485"N	80°12'50.095"W	45.97	269.925	0.25	-0.22	22.54
4216.00	0.250	273.790	4215.50	27.96	0.10	-46.32	1767617.42	436506.69	39°41'46.487"N	80°12'50.100"W	46.32	270.130	0.18	0.02	-44.73
4316.00	0.300	260.620	4315.50	28.22	0.08	-46.80	1767616.95	436506.67	39°41'46.486"N	80°12'50.106"W	46.80	270.094	0.08	0.05	-13.17
4416.00	0.240	273.300	4415.50	28.48	0.05	-47.26	1767616.48	436506.64	39°41'46.486"N	80°12'50.112"W	47.26	270.056	0.08	-0.06	12.68
4516.00	0.390	314.860	4515.49	28.95	0.30	-47.72	1767616.03	436506.89	39°41'46.488"N	80°12'50.118"W	47.72	270.358	0.26	0.15	41.56
4616.00	0.390	300.330	4615.49	29.60	0.71	-48.25	1767615.49	436507.30	39°41'46.492"N	80°12'50.124"W	48.26	270.843	0.10	0.00	-14.53
4716.00	0.800	298.220	4715.49	30.55	1.21	-49.16	1767614.58	436507.80	39°41'46.497"N	80°12'50.136"W	49.17	271.412	0.41	0.41	-2.11
4816.00	1.160	304.890	4815.47	32.15	2.12	-50.60	1767613.14	436508.71	39°41'46.506"N	80°12'50.155"W	50.65	272.400	0.38	0.36	6.67
4916.00	1.260	293.530	4915.45	34.07	3.14	-52.44	1767611.30	436509.73	39°41'46.516"N	80°12'50.178"W	52.54	273.425	0.26	0.10	-11.36
5016.00	1.600	295.110	5015.42	36.26	4.17	-54.71	1767609.03	436510.76	39°41'46.526"N	80°12'50.208"W	54.87	274.359	0.34	0.34	1.58
5116.00	1.770	290.300	5115.38	38.79	5.30	-57.43	1767606.32	436511.89	39°41'46.537"N	80°12'50.242"W	57.67	275.272	0.22	0.17	-4.81
5216.00	1.800	305.180	5215.33	41.59	6.74	-60.16	1767603.58	436513.33	39°41'46.551"N	80°12'50.277"W	60.54	276.392	0.46	0.03	14.88
5316.00	1.860	303.370	5315.28	44.61	8.54	-62.80	1767600.95	436515.13	39°41'46.569"N	80°12'50.311"W	63.38	277.741	0.08	0.06	-1.81
5416.00	1.920	297.810	5415.22	47.66	10.21	-65.64	1767598.11	436516.80	39°41'46.585"N	80°12'50.348"W	66.43	278.843	0.19	0.06	-5.56
5516.00	1.940	301.140	5515.17	50.74	11.87	-68.57	1767595.18	436518.46	39°41'46.601"N	80°12'50.386"W	69.59	279.820	0.11	0.02	3.33
5616.00	1.890	297.780	5615.11	53.81	13.51	-71.47	1767592.27	436520.10	39°41'46.617"N	80°12'50.423"W	72.74	280.705	0.12	-0.05	-3.36
5716.00	1.790	301.480	5715.06	56.75	15.10	-74.26	1767589.48	436521.69	39°41'46.633"N	80°12'50.459"W	75.78	281.490	0.16	-0.10	3.70
5816.00	1.620	295.100	5815.01	59.45	16.51	-76.88	1767586.87	436523.10	39°41'46.646"N	80°12'50.492"W	78.63	282.122	0.25	-0.17	-6.38

RECEIVED
 Office of Oil and Gas
 MAY 31 2018
 WV Department of Environmental Protection



Actual Wellpath Report

Fisher 3H AWP Proj: 16966'

Page 4 of 10



REFERENCE WELLPATH IDENTIFICATION			
Operator	NORTHEAST NATURAL ENERGY, LLC	Slot	Slot #03
Area	Monongalia County, WV	Well	Fisher 3H
Field	Monongalia	Wellbore	Fisher 3H AWB
Facility	Fisher Pad		

WELLPATH DATA (178 stations)															
MD [ft]	Inclination [°]	Azimuth [°]	TVD [ft]	Vert Sect [ft]	North [ft]	East [ft]	Grid East [US ft]	Grid North [US ft]	Latitude	Longitude	Closure Dist [ft]	Closure Dir [°]	DLS [°/100ft]	Build Rate [°/100ft]	Turn Rate [°/100ft]
5916.00	1.200	302.060	5914.98	61.68	17.67	-79.04	1767584.70	436524.26	39°41'46.658"N	80°12'50.520"W	80.99	282.599	0.45	-0.42	6.96
6016.00	1.280	297.170	6014.96	63.66	18.73	-80.93	1767582.82	436525.32	39°41'46.668"N	80°12'50.544"W	83.07	283.033	0.13	0.08	-4.89
6116.00	1.080	299.430	6114.94	65.53	19.71	-82.74	1767581.01	436526.29	39°41'46.677"N	80°12'50.568"W	85.05	283.396	0.21	-0.20	2.26
6216.00	1.140	297.500	6214.92	67.29	20.63	-84.44	1767579.30	436527.22	39°41'46.686"N	80°12'50.590"W	86.93	283.727	0.07	0.06	-1.93
6316.00	1.170	302.190	6314.90	69.15	21.63	-86.19	1767577.56	436528.22	39°41'46.696"N	80°12'50.612"W	88.86	284.089	0.10	0.03	4.69
6416.00	1.090	302.260	6414.88	70.99	22.68	-87.86	1767575.89	436529.27	39°41'46.706"N	80°12'50.633"W	90.74	284.476	0.08	-0.08	0.07
6516.00	1.290	319.050	6514.86	73.00	24.04	-89.40	1767574.35	436530.63	39°41'46.720"N	80°12'50.653"W	92.58	285.051	0.40	0.20	16.79
6616.00	1.170	313.680	6614.84	75.13	25.60	-90.88	1767572.87	436532.18	39°41'46.735"N	80°12'50.672"W	94.41	285.730	0.17	-0.12	-5.37
6716.00	1.100	318.450	6714.82	77.10	27.02	-92.25	1767571.49	436533.61	39°41'46.749"N	80°12'50.690"W	96.13	286.325	0.12	-0.07	4.77
6816.00	0.940	313.970	6814.80	78.86	28.31	-93.48	1767570.27	436534.90	39°41'46.762"N	80°12'50.706"W	97.67	286.847	0.18	-0.16	-4.48
6916.00	0.670	292.290	6914.79	80.18	29.10	-94.61	1767569.14	436535.69	39°41'46.769"N	80°12'50.720"W	98.98	287.096	0.40	-0.27	-21.68
7016.00	0.450	297.580	7014.79	81.03	29.50	-95.50	1767568.25	436536.09	39°41'46.773"N	80°12'50.732"W	99.95	287.167	0.23	-0.22	5.29
7116.00	0.430	335.860	7114.78	81.75	30.03	-96.00	1767567.75	436536.61	39°41'46.778"N	80°12'50.738"W	100.59	287.368	0.29	-0.02	38.28
7216.00	0.630	307.130	7214.78	82.65	30.70	-96.59	1767567.15	436537.29	39°41'46.785"N	80°12'50.746"W	101.35	287.632	0.33	0.20	-28.73
7286.00	0.570	294.870	7284.78	83.33	31.08	-97.21	1767566.53	436537.67	39°41'46.789"N	80°12'50.754"W	102.06	287.729	0.20	-0.09	-17.51
7374.00	4.870	221.240	7372.66	82.95	28.45	-100.08	1767563.67	436535.04	39°41'46.762"N	80°12'50.790"W	104.04	285.871	5.39	4.89	-83.67
7467.00	12.650	211.690	7464.51	78.44	16.80	-108.04	1767555.71	436523.39	39°41'46.647"N	80°12'50.891"W	109.34	278.839	8.48	8.37	-10.27
7561.00	22.020	194.440	7554.20	63.67	-9.10	-117.87	1767545.88	436497.49	39°41'46.390"N	80°12'51.014"W	118.22	265.587	11.27	9.97	-18.35
7656.00	33.470	191.460	7638.14	35.10	-52.16	-127.55	1767536.20	436454.43	39°41'45.964"N	80°12'51.134"W	137.80	247.757	12.14	12.05	-3.14
7750.00	32.750	204.660	7716.98	5.80	-100.74	-143.33	1767520.42	436405.86	39°41'45.482"N	80°12'51.330"W	175.19	234.899	7.70	-0.77	14.04
7844.00	31.080	222.970	7796.96	-10.53	-141.70	-170.54	1767493.21	436364.90	39°41'45.075"N	80°12'51.674"W	221.73	230.278	10.42	-1.78	19.48
7939.00	32.170	241.520	7878.04	-11.06	-171.77	-209.58	1767454.17	436334.83	39°41'44.775"N	80°12'52.171"W	270.98	230.662	10.27	1.15	19.53
8033.00	36.280	257.320	7955.90	4.14	-189.85	-258.83	1767404.93	436316.75	39°41'44.593"N	80°12'52.799"W	320.99	233.739	10.38	4.37	16.81
8128.00	42.170	273.140	8029.65	36.38	-194.29	-318.29	1767345.47	436312.31	39°41'44.544"N	80°12'53.559"W	372.91	238.599	12.18	6.20	16.65
8223.00	49.360	285.370	8096.01	85.65	-182.95	-385.10	1767278.66	436323.65	39°41'44.651"N	80°12'54.415"W	426.35	244.589	11.91	7.57	12.87
8317.00	57.300	296.030	8152.20	149.36	-156.05	-455.27	1767208.49	436350.55	39°41'44.911"N	80°12'55.315"W	481.28	251.080	12.40	8.45	11.34
8412.00	65.710	305.460	8197.56	226.54	-113.24	-526.71	1767137.06	436393.35	39°41'45.329"N	80°12'56.234"W	538.74	257.866	12.42	8.85	9.93
8507.00	75.420	310.940	8229.16	313.04	-57.83	-596.91	1767066.86	436448.76	39°41'45.871"N	80°12'57.137"W	599.71	264.466	11.57	10.22	5.77
8602.00	84.270	314.990	8245.90	405.02	5.86	-665.23	1766998.55	436512.45	39°41'46.495"N	80°12'58.018"W	665.25	270.504	10.22	9.32	4.26
8697.00	88.000	316.340	8252.30	499.01	73.64	-731.45	1766932.33	436580.23	39°41'47.159"N	80°12'58.872"W	735.15	275.749	4.17	3.93	1.42

RECEIVED
 Office of Oil and Gas
 MAY 31 2016
 WV Department of Environmental Protection



Actual Wellpath Report

Fisher 3H AWP Proj: 16966'

Page 5 of 10



REFERENCE WELLPATH IDENTIFICATION			
Operator	NORTHEAST NATURAL ENERGY, LLC	Slot	Slot #03
Area	Monongalia County, WV	Well	Fisher 3H
Field	Monongalia	Wellbore	Fisher 3H AWB
Facility	Fisher Pad		

WELLPATH DATA (178 stations)															
MD [ft]	Inclination [°]	Azimuth [°]	TVD [ft]	Vert Sect [ft]	North [ft]	East [ft]	Grid East [US ft]	Grid North [US ft]	Latitude	Longitude	Closure Dist [ft]	Closure Dir [°]	DLS [°/100ft]	Build Rate [°/100ft]	Turn Rate [°/100ft]
8791.00	88.090	318.480	8255.51	592.50	142.80	-795.03	1766868.76	436649.38	39°41'47.838"N	80°12'59.692"W	807.75	280.183	2.28	0.10	2.28
8885.00	89.630	321.720	8257.38	686.35	214.89	-855.30	1766808.49	436721.47	39°41'48.545"N	80°13'00.471"W	881.88	284.103	3.82	1.64	3.45
8980.00	90.000	326.960	8257.69	781.29	292.05	-910.66	1766753.13	436798.62	39°41'49.304"N	80°13'01.187"W	956.35	287.781	5.53	0.39	5.52
9075.00	91.290	328.150	8256.62	875.98	372.21	-961.63	1766702.17	436878.78	39°41'50.092"N	80°13'01.847"W	1031.15	291.160	1.85	1.36	1.25
9169.00	91.450	325.710	8254.37	969.73	450.95	-1012.90	1766650.90	436957.52	39°41'50.866"N	80°13'02.511"W	1108.75	293.999	2.60	0.17	-2.60
9264.00	91.600	323.630	8251.84	1064.65	528.43	-1067.81	1766595.99	437034.98	39°41'51.627"N	80°13'03.221"W	1191.41	296.329	2.19	0.16	-2.19
9358.00	90.890	322.410	8249.80	1158.62	603.50	-1124.34	1766539.46	437110.05	39°41'52.365"N	80°13'03.952"W	1276.07	298.225	1.50	-0.76	-1.30
9453.00	90.830	322.710	8248.37	1253.61	678.92	-1182.09	1766481.72	437185.47	39°41'53.105"N	80°13'04.699"W	1363.18	299.870	0.32	-0.06	0.32
9548.00	90.370	324.920	8247.38	1348.59	755.59	-1238.17	1766425.64	437262.13	39°41'53.859"N	80°13'05.424"W	1450.51	301.393	2.38	-0.48	2.33
9642.00	90.120	328.120	8246.97	1442.40	833.98	-1290.02	1766373.80	437340.52	39°41'54.629"N	80°13'06.095"W	1536.12	302.882	3.41	-0.27	3.40
9737.00	90.550	328.310	8246.42	1537.00	914.73	-1340.06	1766323.76	437421.26	39°41'55.423"N	80°13'06.744"W	1622.49	304.318	0.49	0.45	0.20
9831.00	92.220	320.750	8244.14	1630.87	991.21	-1394.54	1766269.28	437497.74	39°41'56.175"N	80°13'07.449"W	1710.92	305.404	8.23	1.78	-8.04
9926.00	89.970	314.680	8242.33	1725.40	1061.44	-1458.42	1766205.41	437567.96	39°41'56.864"N	80°13'08.273"W	1803.78	306.047	6.81	-2.37	-6.39
10020.00	89.110	316.730	8243.08	1818.63	1128.71	-1524.06	1766139.78	437635.23	39°41'57.524"N	80°13'09.120"W	1896.51	306.524	2.36	-0.91	2.18
10115.00	88.890	322.500	8244.74	1913.41	1201.03	-1585.57	1766078.26	437707.55	39°41'58.233"N	80°13'09.914"W	1989.10	307.143	6.08	-0.23	6.07
10209.00	89.970	323.020	8245.68	2007.40	1275.86	-1642.45	1766021.39	437782.37	39°41'58.968"N	80°13'10.649"W	2079.78	307.840	1.28	1.15	0.55
10304.00	90.120	320.070	8245.60	2102.36	1350.25	-1701.53	1765962.32	437856.75	39°41'59.699"N	80°13'11.413"W	2172.18	308.434	3.11	0.16	-3.11
10398.00	90.180	316.990	8245.36	2196.06	1420.67	-1763.77	1765900.08	437927.18	39°42'00.390"N	80°13'12.216"W	2264.77	308.851	3.28	0.06	-3.28
10493.00	90.250	317.200	8245.00	2290.56	1490.26	-1828.44	1765835.41	437996.76	39°42'01.072"N	80°13'13.051"W	2358.83	309.181	0.23	0.07	0.22
10588.00	91.050	318.290	8243.92	2385.15	1560.57	-1892.32	1765771.54	438067.06	39°42'01.762"N	80°13'13.875"W	2452.80	309.512	1.42	0.84	1.15
10683.00	90.830	322.440	8242.36	2480.02	1633.70	-1952.90	1765710.96	438140.19	39°42'02.480"N	80°13'14.658"W	2546.13	309.914	4.37	-0.23	4.37
10777.00	90.800	322.910	8241.02	2574.00	1708.44	-2009.89	1765653.97	438214.93	39°42'03.214"N	80°13'15.394"W	2637.88	310.365	0.50	-0.03	0.50
10872.00	90.370	320.780	8240.05	2668.97	1783.14	-2068.57	1765595.29	438289.62	39°42'03.948"N	80°13'16.153"W	2731.04	310.762	2.29	-0.45	-2.24
10966.00	90.340	320.040	8239.47	2762.88	1855.57	-2128.47	1765535.39	438362.05	39°42'04.659"N	80°13'16.927"W	2823.75	311.081	0.79	-0.03	-0.79
11061.00	90.340	320.230	8238.91	2857.76	1928.49	-2189.37	1765474.51	438434.96	39°42'05.375"N	80°13'17.713"W	2917.60	311.375	0.20	0.00	0.20
11156.00	90.120	322.300	8238.53	2952.71	2002.59	-2248.81	1765415.07	438509.06	39°42'06.102"N	80°13'18.481"W	3011.23	311.685	2.19	-0.23	2.18
11250.00	90.430	323.450	8238.08	3046.70	2077.54	-2305.54	1765358.34	438584.00	39°42'06.838"N	80°13'19.215"W	3103.49	312.022	1.27	0.33	1.22
11345.00	90.550	324.240	8237.26	3141.69	2154.24	-2361.58	1765302.30	438660.70	39°42'07.592"N	80°13'19.940"W	3196.53	312.371	0.84	0.13	0.83
11439.00	89.940	326.690	8236.86	3235.59	2231.67	-2414.87	1765249.02	438738.12	39°42'08.353"N	80°13'20.629"W	3288.15	312.742	2.69	-0.65	2.61
11534.00	89.450	325.690	8237.37	3330.44	2310.60	-2467.73	1765196.16	438817.05	39°42'09.129"N	80°13'21.314"W	3380.61	313.117	1.17	-0.52	-1.05

RECEIVED
 Office of Oil and Gas
 WV Department of Environmental Protection
 MAY 31 2014



Actual Wellpath Report

Fisher 3H AWP Proj: 16966'

Page 6 of 10



REFERENCE WELLPATH IDENTIFICATION			
Operator	NORTHEAST NATURAL ENERGY, LLC	Slot	Slot #03
Area	Monongalia County, WV	Well	Fisher 3H
Field	Monongalia	Wellbore	Fisher 3H AWB
Facility	Fisher Pad		

WELLPATH DATA (178 stations)															
MD [ft]	Inclination [°]	Azimuth [°]	TVD [ft]	Vert Sect [ft]	North [ft]	East [ft]	Grid East [US ft]	Grid North [US ft]	Latitude	Longitude	Closure Dist [ft]	Closure Dir [°]	DLS [°/100ft]	Build Rate [°/100ft]	Turn Rate [°/100ft]
11628.00	89.020	324.530	8238.62	3424.37	2387.69	-2521.49	1765142.40	438894.14	39°42'09.886"N	80°13'22.010"W	3472.61	313.439	1.32	-0.46	-1.23
11723.00	89.020	324.680	8240.25	3519.32	2465.13	-2576.51	1765087.39	438971.57	39°42'10.647"N	80°13'22.721"W	3565.84	313.734	0.16	0.00	0.16
11817.00	89.510	323.680	8241.45	3613.29	2541.34	-2631.51	1765032.38	439047.77	39°42'11.396"N	80°13'23.433"W	3658.32	314.001	1.18	0.52	-1.06
11912.00	89.510	324.980	8242.27	3708.26	2618.51	-2686.91	1764976.99	439124.94	39°42'12.154"N	80°13'24.150"W	3751.81	314.261	1.37	0.00	1.37
12006.00	89.540	325.280	8243.04	3802.19	2695.63	-2740.65	1764923.26	439202.06	39°42'12.912"N	80°13'24.845"W	3844.16	314.526	0.32	0.03	0.32
12101.00	89.570	324.550	8243.78	3897.13	2773.37	-2795.25	1764868.66	439279.79	39°42'13.676"N	80°13'25.552"W	3937.64	314.775	0.77	0.03	-0.77
12196.00	89.690	324.750	8244.40	3992.09	2850.85	-2850.21	1764813.70	439357.27	39°42'14.437"N	80°13'26.263"W	4031.26	315.006	0.25	0.13	0.21
12290.00	89.880	324.850	8244.75	4086.04	2927.66	-2904.40	1764759.52	439434.07	39°42'15.192"N	80°13'26.964"W	4123.92	315.229	0.23	0.20	0.11
12385.00	90.220	323.810	8244.67	4181.02	3004.84	-2959.79	1764704.13	439511.24	39°42'15.950"N	80°13'27.681"W	4217.75	315.433	1.15	0.36	-1.09
12479.00	90.150	324.840	8244.36	4274.99	3081.19	-3014.61	1764649.31	439587.60	39°42'16.701"N	80°13'28.390"W	4310.64	315.626	1.10	-0.07	1.10
12574.00	89.820	324.970	8244.39	4369.94	3158.92	-3069.23	1764594.70	439665.32	39°42'17.464"N	80°13'29.097"W	4404.43	315.825	0.37	-0.35	0.14
12668.00	89.940	323.860	8244.58	4463.91	3235.37	-3123.93	1764540.00	439741.76	39°42'18.216"N	80°13'29.805"W	4497.39	316.004	1.19	0.13	-1.18
12762.00	90.220	326.850	8244.45	4557.82	3312.69	-3177.36	1764486.57	439819.08	39°42'18.975"N	80°13'30.496"W	4590.16	316.195	3.19	0.30	3.18
12857.00	89.850	326.100	8244.39	4652.64	3391.89	-3229.83	1764434.11	439898.27	39°42'19.754"N	80°13'31.176"W	4683.66	316.402	0.88	-0.39	-0.79
12952.00	89.350	327.870	8245.06	4747.40	3471.54	-3281.59	1764382.35	439977.92	39°42'20.537"N	80°13'31.846"W	4777.07	316.611	1.94	-0.53	1.86
13046.00	89.570	326.510	8245.94	4841.15	3550.54	-3332.52	1764331.42	440056.92	39°42'21.314"N	80°13'32.506"W	4869.50	316.814	1.47	0.23	-1.45
13141.00	89.600	323.070	8246.63	4936.08	3628.15	-3387.28	1764276.66	440134.52	39°42'22.076"N	80°13'33.215"W	4963.58	316.966	3.62	0.03	-3.62
13236.00	89.200	318.480	8247.63	5030.98	3701.72	-3447.34	1764216.61	440208.08	39°42'22.798"N	80°13'33.991"W	5058.34	317.038	4.85	-0.42	-4.83
13331.00	88.430	317.930	8249.59	5125.63	3772.53	-3510.64	1764153.31	440278.89	39°42'23.493"N	80°13'34.808"W	5153.30	317.059	1.00	-0.81	-0.58
13425.00	88.710	317.800	8251.94	5219.22	3842.21	-3573.68	1764090.28	440348.57	39°42'24.177"N	80°13'35.622"W	5247.26	317.074	0.33	0.30	-0.14
13519.00	88.920	316.250	8253.88	5312.69	3910.97	-3637.74	1764026.22	440417.32	39°42'24.851"N	80°13'36.449"W	5341.24	317.073	1.66	0.22	-1.65
13613.00	88.280	316.330	8256.18	5406.02	3978.90	-3702.68	1763961.29	440485.25	39°42'25.517"N	80°13'37.286"W	5435.20	317.059	0.69	-0.68	0.09
13708.00	88.460	319.220	8258.88	5500.57	4049.21	-3766.49	1763897.48	440555.55	39°42'26.207"N	80°13'38.110"W	5530.15	317.072	3.05	0.19	3.04
13803.00	88.990	321.100	8261.00	5595.43	4122.13	-3827.33	1763836.64	440628.47	39°42'26.923"N	80°13'38.896"W	5624.98	317.124	2.06	0.56	1.98
13897.00	89.230	323.790	8262.46	5689.40	4196.64	-3884.62	1763779.36	440702.97	39°42'27.654"N	80°13'39.637"W	5718.57	317.211	2.87	0.26	2.86
13991.00	89.600	323.890	8263.42	5783.39	4272.53	-3940.08	1763723.90	440778.86	39°42'28.400"N	80°13'40.354"W	5811.94	317.318	0.41	0.39	0.11
14086.00	89.450	324.470	8264.20	5878.36	4349.55	-3995.67	1763668.31	440855.88	39°42'29.157"N	80°13'41.074"W	5906.27	317.428	0.63	-0.16	0.61
14181.00	88.860	325.710	8265.60	5973.29	4427.45	-4050.03	1763613.95	440933.77	39°42'29.922"N	80°13'41.777"W	6000.42	317.549	1.45	-0.62	1.31
14276.00	89.230	326.920	8267.19	6068.11	4506.49	-4102.71	1763561.27	441012.80	39°42'30.699"N	80°13'42.459"W	6094.31	317.685	1.33	0.39	1.27
14370.00	89.230	326.010	8268.45	6161.93	4584.83	-4154.64	1763509.35	441091.14	39°42'31.469"N	80°13'43.132"W	6187.22	317.818	0.97	0.00	-0.97

RECEIVED
 Office of Oil and Gas
 MAY 31 2018
 Department of Environmental Protection



Actual Wellpath Report

Fisher 3H AWP Proj: 16966'

Page 7 of 10



REFERENCE WELLPATH IDENTIFICATION			
Operator	NORTHEAST NATURAL ENERGY, LLC	Slot	Slot #03
Area	Monongalia County, WV	Well	Fisher 3H
Field	Monongalia	Wellbore	Fisher 3H AWB
Facility	Fisher Pad		

WELLPATH DATA (178 stations)

MD [ft]	Inclination [°]	Azimuth [°]	TVD [ft]	Vert Sect [ft]	North [ft]	East [ft]	Grid East [US ft]	Grid North [US ft]	Latitude	Longitude	Closure Dist [ft]	Closure Dir [°]	DLS [°/100ft]	Build Rate [°/100ft]	Turn Rate [°/100ft]
14465.00	89.200	325.860	8269.75	6256.80	4663.52	-4207.85	1763456.15	441169.83	39°42'32.243"N	80°13'43.821"W	6281.27	317.940	0.16	-0.03	-0.16
14560.00	89.260	326.910	8271.03	6351.62	4742.63	-4260.43	1763403.56	441248.93	39°42'33.020"N	80°13'44.502"W	6375.25	318.066	1.11	0.06	1.11
14655.00	89.720	326.120	8271.88	6446.44	4821.86	-4312.84	1763351.16	441328.16	39°42'33.799"N	80°13'45.181"W	6469.23	318.189	0.96	0.48	-0.83
14749.00	89.320	324.720	8272.66	6540.35	4899.25	-4366.19	1763297.81	441405.54	39°42'34.559"N	80°13'45.871"W	6562.49	318.293	1.55	-0.43	-1.49
14842.00	89.170	319.550	8273.89	6633.30	4972.63	-4423.25	1763240.76	441478.92	39°42'35.280"N	80°13'46.609"W	6655.24	318.346	5.56	-0.16	-5.56
14937.00	89.630	320.280	8274.88	6728.16	5045.31	-4484.42	1763179.59	441551.60	39°42'35.993"N	80°13'47.399"W	6750.20	318.368	0.91	0.48	0.77
15031.00	89.200	321.440	8275.84	6822.08	5118.21	-4543.75	1763120.27	441624.50	39°42'36.709"N	80°13'48.166"W	6844.11	318.403	1.32	-0.46	1.23
15126.00	89.290	322.370	8277.10	6917.06	5192.97	-4602.36	1763061.66	441699.25	39°42'37.443"N	80°13'48.924"W	6938.92	318.451	0.98	0.09	0.98
15221.00	88.580	321.670	8278.86	7012.03	5267.84	-4660.81	1763003.22	441774.11	39°42'38.178"N	80°13'49.679"W	7033.72	318.499	1.05	-0.75	-0.74
15315.00	88.370	320.710	8281.36	7105.95	5341.06	-4719.70	1762944.33	441847.33	39°42'38.897"N	80°13'50.441"W	7127.58	318.534	1.05	-0.22	-1.02
15410.00	88.400	318.980	8284.04	7200.76	5413.64	-4780.93	1762883.10	441919.90	39°42'39.610"N	80°13'51.232"W	7222.52	318.551	1.82	0.03	-1.82
15505.00	88.830	320.430	8286.34	7295.57	5486.07	-4842.35	1762821.68	441992.33	39°42'40.320"N	80°13'52.025"W	7317.47	318.566	1.59	0.45	1.53
15600.00	89.510	322.320	8287.71	7390.52	5560.28	-4901.64	1762762.39	442066.53	39°42'41.049"N	80°13'52.792"W	7412.34	318.602	2.11	0.72	1.99
15694.00	89.480	320.790	8288.54	7484.48	5633.90	-4960.09	1762703.96	442140.14	39°42'41.772"N	80°13'53.547"W	7506.21	318.639	1.63	-0.03	-1.63
15789.00	89.570	320.980	8289.33	7579.41	5707.60	-5020.02	1762644.03	442213.85	39°42'42.495"N	80°13'54.322"W	7601.14	318.667	0.22	0.09	0.20
15884.00	90.890	324.010	8288.95	7674.40	5782.95	-5077.85	1762586.20	442289.19	39°42'43.235"N	80°13'55.069"W	7695.91	318.715	3.48	1.39	3.19
15979.00	91.570	323.830	8286.91	7769.36	5859.71	-5133.78	1762530.27	442365.95	39°42'43.990"N	80°13'55.793"W	7790.50	318.778	0.74	0.72	-0.19
16073.00	91.350	323.610	8284.51	7863.32	5935.47	-5189.39	1762474.67	442441.70	39°42'44.734"N	80°13'56.512"W	7884.13	318.837	0.33	-0.23	-0.23
16167.00	89.660	322.570	8283.68	7957.32	6010.62	-5245.83	1762418.22	442516.85	39°42'45.472"N	80°13'57.243"W	7977.86	318.887	2.11	-1.80	-1.11
16262.00	89.850	322.030	8284.09	8052.31	6085.79	-5303.93	1762360.13	442592.01	39°42'46.210"N	80°13'57.994"W	8072.70	318.927	0.60	0.20	-0.57
16357.00	88.980	324.580	8285.06	8147.29	6161.95	-5360.69	1762303.38	442668.17	39°42'46.958"N	80°13'58.728"W	8167.41	318.978	2.84	-0.92	2.68
16451.00	88.090	323.990	8287.46	8241.24	6238.24	-5415.54	1762248.53	442744.46	39°42'47.708"N	80°13'59.438"W	8260.98	319.038	1.14	-0.95	-0.63
16546.00	88.220	327.790	8290.52	8336.05	6316.84	-5468.78	1762195.29	442823.05	39°42'48.480"N	80°14'00.127"W	8355.24	319.116	4.00	0.14	4.00
16641.00	88.830	327.220	8292.97	8430.72	6396.94	-5519.80	1762144.28	442903.15	39°42'49.268"N	80°14'00.789"W	8449.20	319.210	0.88	0.64	-0.60
16735.00	88.090	327.140	8295.50	8524.44	6475.91	-5570.73	1762093.35	442982.11	39°42'50.044"N	80°14'01.448"W	8542.27	319.297	0.79	-0.79	-0.09
16830.00	86.890	322.480	8299.66	8619.27	6553.45	-5625.40	1762038.68	443059.65	39°42'50.806"N	80°14'02.156"W	8636.72	319.358	5.06	-1.26	-4.91
16925.00	85.010	320.770	8306.37	8714.00	6627.74	-5684.23	1761979.86	443133.93	39°42'51.535"N	80°14'02.917"W	8731.40	319.382	2.67	-1.98	-1.80
16966.00	85.010	320.770	8309.93	8754.81	6659.38	-5710.06	1761954.03	443165.56	39°42'51.846"N	80°14'03.251"W	8772.23	319.389	0.00	0.00	0.00

RECEIVED
 Office of Oil and Gas
 MAY 31 2018
 WV Department of Environmental Protection



Actual Wellpath Report

Fisher 3H AWP Proj: 16966'

Page 8 of 10



REFERENCE WELLPATH IDENTIFICATION

Operator	NORTHEAST NATURAL ENERGY, LLC	Slot	Slot #03
Area	Monongalia County, WV	Well	Fisher 3H
Field	Monongalia	Wellbore	Fisher 3H AWB
Facility	Fisher Pad		

HOLE & CASING SECTIONS - Ref Wellbore: Fisher 3H AWB Ref Wellpath: Fisher 3H AWP Proj: 16966'

String/Diameter	Start MD [ft]	End MD [ft]	Interval [ft]	Start TVD [ft]	End TVD [ft]	Start N/S [ft]	Start E/W [ft]	End N/S [ft]	End E/W [ft]
24in Conductor	32.00	72.00	40.00	32.00	72.00	0.00	0.00	-0.03	-0.01
17.5in Open Hole	72.00	1490.00	1418.00	72.00	1489.99	-0.03	-0.01	1.62	-1.55
13.375in Casing Surface	32.00	1460.00	1428.00	32.00	1459.99	0.00	0.00	1.69	-1.26
12.25in Open Hole	1490.00	2712.00	1222.00	1489.99	2711.64	1.62	-1.55	-6.09	-29.03
9.625in Casing Intermediate	32.00	2682.00	2650.00	32.00	2681.64	0.00	0.00	-6.09	-28.44
8.75in Open Hole	2712.00	7300.00	4588.00	2711.64	7298.77	-6.09	-29.03	31.06	-97.39
8.5in Open Hole	7300.00	16966.00	9666.00	7298.77	8309.93	31.06	-97.39	6659.38	-5710.06
5.5in Casing Production	32.00	16966.00	16934.00	32.00	8309.93	0.00	0.00	6659.38	-5710.06

TARGETS

Name	TVD [ft]	North [ft]	East [ft]	Grid East [US ft]	Grid North [US ft]	Latitude	Longitude	Shape
Fisher 3H BHL Rev-2	8266.00	6657.37	-5713.66	1761950.43	443163.56	39°42'51.826"N	80°14'03.296"W	point
Fisher 3H LP Rev-2	8266.00	64.22	-745.51	1766918.28	436570.81	39°41'47.065"N	80°12'59.051"W	point
Fisher 3H HL1	8350.00	0.00	0.00	1767663.74	436506.59	39°41'46.489"N	80°12'49.507"W	polygon
Fisher 3H HL2	8350.00	0.00	0.00	1767663.74	436506.59	39°41'46.489"N	80°12'49.507"W	polygon

RECEIVED
Office of Oil and Gas
MAY 31 2018
WV Department of
Environmental Protection



Actual Wellpath Report

Fisher 3H AWP Proj: 16966'

Page 9 of 10



REFERENCE WELLPATH IDENTIFICATION			
Operator	NORTHEAST NATURAL ENERGY, LLC	Slot	Slot #03
Area	Monongalia County, WV	Well	Fisher 3H
Field	Monongalia	Wellbore	Fisher 3H AWB
Facility	Fisher Pad		

WELLPATH COMPOSITION - Ref Wellbore: Fisher 3H AWB Ref Wellpath: Fisher 3H AWP Proj: 16966'				
Start MD [ft]	End MD [ft]	Positional Uncertainty Model	Log Name/Comment	Wellbore
32.00	7286.00	VESSI GyroFlex v4	01_VES Gyro <8-3/4"> (100'-7270')	Fisher 3H AWB
7286.00	16925.00	BHI AutoTrak Curve (Short)	02_BHI AT Curve <8-1/2"> (7286')(7374'-16925')	Fisher 3H AWB
16925.00	16966.00	Blind Drilling (std)	Projection to bit	Fisher 3H AWB

RECEIVED
 Office of Oil and Gas
 MAY 31 2018
 WV Department of
 Environmental Protection



Actual Wellpath Report

Fisher 3H AWP Proj: 16966'

Page 10 of 10



REFERENCE WELLPATH IDENTIFICATION			
Operator	NORTHEAST NATURAL ENERGY, LLC	Slot	Slot #03
Area	Monongalia County, WV	Well	Fisher 3H
Field	Monongalia	Wellbore	Fisher 3H AWB
Facility	Fisher Pad		

COMMENTS

Wellpath general comments

API: 47-061-01734-0000

BHI Job #: 8373892

Rig: Nabors X08

Duration: 1/30/2017-2/6/2017

VES Gyro <8-3/4"> (100'-7270')

BHI AT Curve <8-1/2"> (7286')(7374'-16925')

Projected MD at TD: 16966'

RECEIVED
Office of Oil and Gas
MAY 31 2018
WV Department of
Environmental Protection