

61-01674



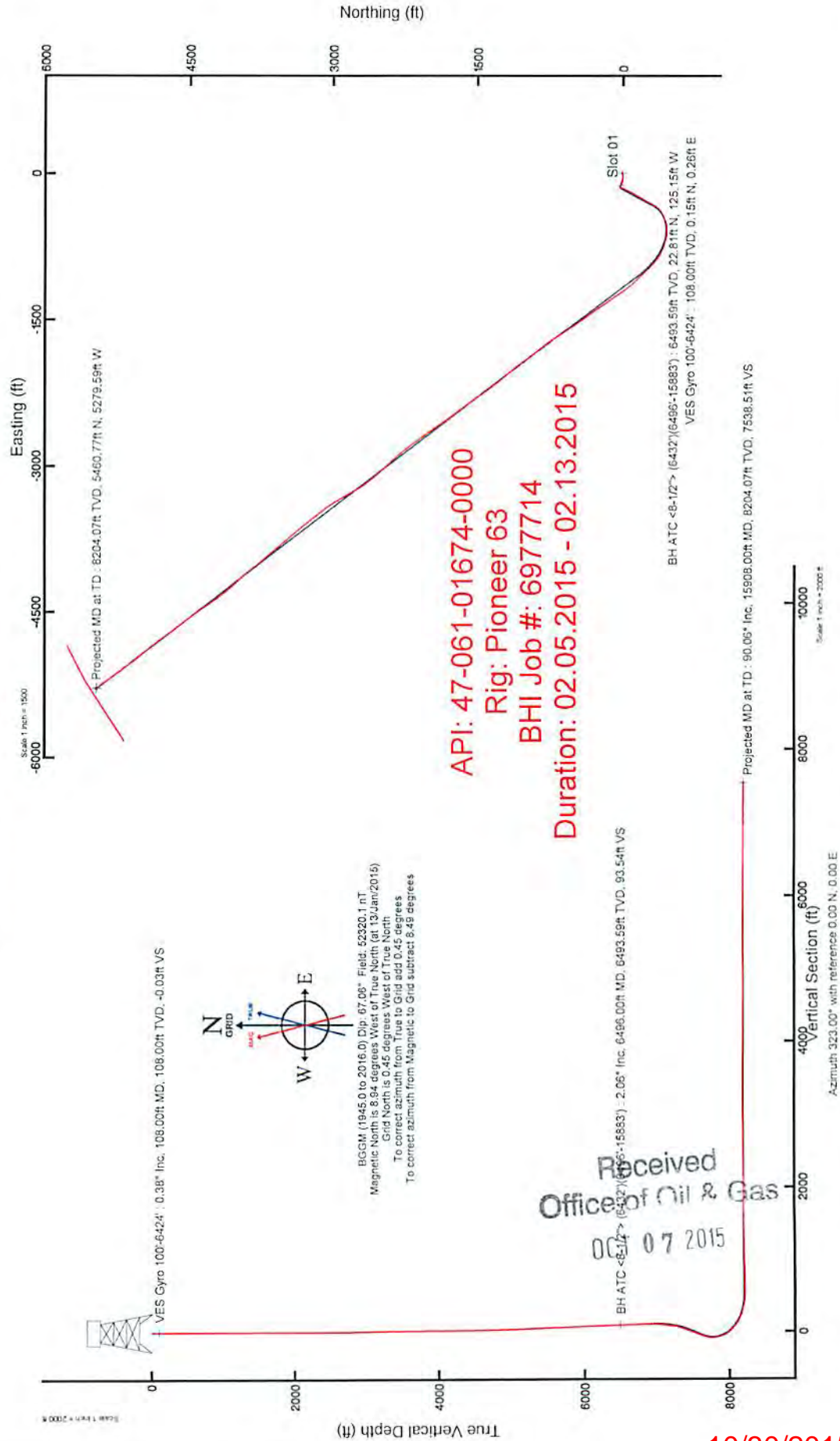
# NORTHEAST NATURAL ENERGY, LLC

Location: Monongalia County, WV  
 Field: Monongalia  
 Facility: Coastal Pad  
 Slot: Slot 01  
 Well: Coastal 1H  
 Wellbore: Coastal 1H PWB



Well Name	Well ID	Well Type	Well Status	Well Depth (ft)	Well Diameter (in)
Coastal 1H	61-01674-01	Production	Open	108.00	4.50

Location Information			
Grid East (US Ft)	Grid North (US Ft)	Latitude	Longitude
438660.000	5071216.1377V	39°42'19.837"N	80°12'16.1377"W
Local East (ft)	Local North (ft)	Local East (US Ft)	Local North (US Ft)
0.00	0.00	438660.000	5071216.1377V
Magnetic Declination (MAG) at Date of Survey: -1.420°			
Magnetic Declination (MAG) at Date of Survey: -1.420°			



API: 47-061-01674-0000  
 Rig: Pioneer 63  
 BHI Job #: 6977714  
 Duration: 02.05.2015 - 02.13.2015

Received  
 Office of Oil & Gas  
 02 07 2015

10/30/2015

61-01674

18	0	58.87	18	0	0	0	1770298	439860	39°42'19.837"N	80°12'16.137"W	0	0	0
108	0.38	58.87	108	-0.03	0.15	0.26	1770299	439860.15	39°42'19.838"N	80°12'16.134"W	0.3	58.87	0.42
208	0.18	54.25	208	-0.07	0.42	0.67	1770299	439860.42	39°42'19.841"N	80°12'16.129"W	0.79	57.949	0.2
308	0.06	56.12	308	-0.07	0.54	0.84	1770299	439860.54	39°42'19.842"N	80°12'16.126"W	1	57.269	0.12
408	0.25	76.71	408	-0.16	0.62	1.09	1770299	439860.62	39°42'19.843"N	80°12'16.123"W	1.26	60.536	0.19
508	0.2	101.79	508	-0.38	0.63	1.48	1770300	439860.63	39°42'19.843"N	80°12'16.118"W	1.61	66.821	0.11
608	0.17	279.52	608	-0.41	0.62	1.5	1770300	439860.62	39°42'19.843"N	80°12'16.118"W	1.62	67.522	0.37
708	0.22	238.33	708	-0.28	0.54	1.19	1770300	439860.54	39°42'19.842"N	80°12'16.122"W	1.31	65.425	0.14
808	0.3	293.7	808	-0.04	0.55	0.79	1770299	439860.55	39°42'19.842"N	80°12'16.127"W	0.96	55.134	0.25
908	0.13	304.35	907.99	0.3	0.72	0.46	1770299	439860.72	39°42'19.844"N	80°12'16.131"W	0.85	32.345	0.17
1008	0.19	328.92	1007.99	0.57	0.92	0.28	1770299	439860.92	39°42'19.846"N	80°12'16.134"W	0.96	16.61	0.09
1108	0.32	350.12	1107.99	0.99	1.34	0.14	1770299	439861.34	39°42'19.850"N	80°12'16.135"W	1.35	6.054	0.16
1208	0.19	325.64	1207.99	1.4	1.75	0	1770298	439861.75	39°42'19.854"N	80°12'16.137"W	1.75	0.026	0.17
1308	0.32	315.23	1307.99	1.84	2.09	-0.29	1770298	439862.09	39°42'19.857"N	80°12'16.141"W	2.11	352.111	0.14
1408	0.43	344.95	1407.99	2.47	2.65	-0.58	1770298	439862.65	39°42'19.863"N	80°12'16.145"W	2.71	347.579	0.22
1508	0.47	316.13	1507.99	3.22	3.31	-0.97	1770297	439863.31	39°42'19.869"N	80°12'16.150"W	3.45	343.731	0.23
1608	0.47	297.47	1607.98	4	3.79	-1.61	1770297	439863.79	39°42'19.874"N	80°12'16.158"W	4.12	336.954	0.15
1708	0.46	343.63	1707.98	4.75	4.37	-2.09	1770296	439864.37	39°42'19.880"N	80°12'16.164"W	4.84	334.419	0.36
1808	0.5	44.7	1807.98	5.18	5.06	-1.9	1770297	439865.06	39°42'19.887"N	80°12'16.162"W	5.41	339.46	0.49
1908	0.38	80.7	1907.97	5.09	5.43	-1.26	1770297	439865.43	39°42'19.890"N	80°12'16.154"W	5.57	346.901	0.29
2008	0.34	105.24	2007.97	4.7	5.4	-0.65	1770298	439865.4	39°42'19.890"N	80°12'16.146"W	5.44	353.149	0.16
2108	0.44	115.3	2107.97	4.13	5.16	-0.02	1770298	439865.16	39°42'19.888"N	80°12'16.138"W	5.16	359.827	0.12
2208	0.4	118.99	2207.97	3.47	4.83	0.64	1770299	439864.83	39°42'19.885"N	80°12'16.129"W	4.87	7.518	0.05
2308	0.55	246.56	2307.97	3.26	4.47	0.5	1770299	439864.47	39°42'19.881"N	80°12'16.131"W	4.49	6.412	0.85
2408	0.98	244.94	2407.96	3.55	3.91	-0.71	1770298	439863.91	39°42'19.875"N	80°12'16.147"W	3.98	349.671	0.43
2508	1.18	242.27	2507.94	3.9	3.07	-2.4	1770296	439863.07	39°42'19.867"N	80°12'16.168"W	3.9	322.005	0.21
2608	0.97	242.93	2607.92	4.21	2.21	-4.06	1770294	439862.21	39°42'19.858"N	80°12'16.189"W	4.62	298.504	0.21
2708	1.03	262.46	2707.91	4.8	1.7	-5.71	1770293	439861.7	39°42'19.853"N	80°12'16.210"W	5.96	286.618	0.34
2808	1.46	256	2807.88	5.74	1.28	-7.84	1770291	439861.28	39°42'19.849"N	80°12'16.237"W	7.94	279.261	0.45
2908	1.75	256.37	2907.84	6.84	0.61	-10.56	1770288	439860.61	39°42'19.842"N	80°12'16.272"W	10.57	273.306	0.29
3008	1.71	262.07	3007.8	8.17	0.04	-13.52	1770285	439860.04	39°42'19.836"N	80°12'16.310"W	13.52	270.187	0.18
3108	1.64	271.03	3107.75	9.78	-0.14	-16.43	1770282	439859.86	39°42'19.834"N	80°12'16.347"W	16.43	269.526	0.27
3208	1.56	265.21	3207.72	11.38	-0.22	-19.21	1770279	439859.78	39°42'19.833"N	80°12'16.383"W	19.21	269.332	0.18
3308	1.32	272.66	3307.68	12.84	-0.28	-21.72	1770277	439859.73	39°42'19.832"N	80°12'16.415"W	21.72	269.251	0.3
3408	1.34	267.93	3407.66	14.25	-0.27	-24.04	1770274	439859.73	39°42'19.832"N	80°12'16.445"W	24.04	269.35	0.11
3508	1.15	274.57	3507.63	15.58	-0.24	-26.21	1770272	439859.76	39°42'19.832"N	80°12'16.472"W	26.21	269.486	0.24
3608	1.05	278.22	3607.62	16.9	-0.02	-28.12	1770270	439859.98	39°42'19.834"N	80°12'16.497"W	28.12	269.951	0.12
3708	0.96	275.85	3707.6	18.12	0.19	-29.86	1770269	439860.19	39°42'19.836"N	80°12'16.519"W	29.86	270.369	0.1
3808	0.79	270.5	3807.59	19.11	0.28	-31.38	1770267	439860.28	39°42'19.837"N	80°12'16.539"W	31.38	270.518	0.19
3908	0.88	248.42	3907.58	19.73	0.01	-32.78	1770266	439860.01	39°42'19.830"N	80°12'16.576"W	32.78	270.012	0.33
4008	0.93	260.63	4007.57	20.31	-0.41	-34.3	1770264	439859.59	39°42'19.830"N	80°12'16.576"W	34.3	269.319	0.2
4108	1.02	269.78	4107.55	21.22	-0.54	-35.99	1770262	439859.46	39°42'19.829"N	80°12'16.597"W	35.99	269.136	0.18
4208	0.81	265.74	4207.54	22.14	-0.6	-37.58	1770261	439859.4	39°42'19.828"N	80°12'16.618"W	37.58	269.087	0.22
4308	1.34	264.84	4307.52	23.14	-0.76	-39.45	1770259	439859.24	39°42'19.826"N	80°12'16.642"W	39.45	268.901	0.53
4408	1.28	279.08	4407.49	24.56	-0.69	-41.72	1770257	439859.31	39°42'19.827"N	80°12'16.671"W	41.72	269.059	0.33
4508	1.42	265.72	4507.47	26.03	-0.6	-44.06	1770254	439859.4	39°42'19.827"N	80°12'16.701"W	44.06	269.218	0.34
4608	1.47	273.17	4607.44	27.53	-0.62	-46.57	1770252	439859.38	39°42'19.827"N	80°12'16.733"W	46.57	269.233	0.19
4708	1.48	273.67	4707.4	29.2	-0.47	-49.14	1770249	439859.53	39°42'19.828"N	80°12'16.766"W	49.14	269.452	0.02

Received  
Office of Oil & Gas  
OCT 07 2015

61-01674

4808	2.05	274.23	4807.35	31.22	-0.26	-52.22	1770246	439859.74	39°42'19.830"N	80°12'16.805"W	52.22	269.72	0.57
4908	2.08	283.71	4907.29	33.8	0.31	-55.76	1770243	439860.31	39°42'19.836"N	80°12'16.851"W	55.76	270.315	0.34
5008	2.24	276.92	5007.22	36.56	0.97	-59.47	1770239	439860.97	39°42'19.842"N	80°12'16.898"W	59.47	270.937	0.3
5108	2.66	274.87	5107.13	39.47	1.41	-63.72	1770235	439861.4	39°42'19.846"N	80°12'16.952"W	63.73	271.263	0.43
5208	2.99	282.99	5207.01	43.02	2.19	-68.57	1770230	439862.19	39°42'19.853"N	80°12'17.015"W	68.61	271.828	0.52
5308	2.92	289.14	5306.87	47.13	3.61	-73.52	1770225	439863.61	39°42'19.867"N	80°12'17.078"W	73.61	272.811	0.32
5408	2.7	284.6	5406.75	51.09	5.04	-78.2	1770220	439865.04	39°42'19.881"N	80°12'17.138"W	78.37	273.686	0.31
5508	2.89	286.94	5506.63	54.97	6.37	-82.9	1770216	439866.37	39°42'19.893"N	80°12'17.198"W	83.14	274.392	0.22
5608	2.78	295.48	5606.51	59.16	8.14	-87.5	1770211	439868.14	39°42'19.911"N	80°12'17.257"W	87.87	275.318	0.44
5708	2.59	293.95	5706.4	63.29	10.1	-91.75	1770207	439870.1	39°42'19.930"N	80°12'17.312"W	96.61	276.285	0.2
5808	2.53	290.06	5806.3	67.11	11.78	-95.89	1770203	439871.78	39°42'19.946"N	80°12'17.365"W	92.31	277.003	0.18
5908	2.9	288.91	5906.19	71.06	13.36	-100.36	1770198	439873.36	39°42'19.961"N	80°12'17.422"W	101.24	277.581	0.37
6008	2.74	290.73	6006.07	75.18	15.02	-104.98	1770193	439875.02	39°42'19.977"N	80°12'17.482"W	106.05	278.143	0.18
6108	2.69	288.66	6105.96	79.14	16.62	-109.44	1770189	439876.62	39°42'19.993"N	80°12'17.539"W	110.7	278.634	0.11
6208	2.72	289.88	6205.85	83.06	18.18	-113.9	1770185	439878.18	39°42'20.008"N	80°12'17.596"W	115.34	279.067	0.06
6308	2.51	291.81	6305.74	86.92	19.8	-118.16	1770180	439879.8	39°42'20.023"N	80°12'17.651"W	119.81	279.511	0.23
6408	2.36	290.34	6405.65	90.53	21.33	-122.12	1770176	439881.32	39°42'20.038"N	80°12'17.702"W	123.97	279.905	0.16
6432	2.26	294.75	6429.63	91.36	21.7	-123.02	1770175	439881.69	39°42'20.042"N	80°12'17.713"W	124.92	280.002	0.85
6496	2.06	300.73	6493.59	93.54	22.81	-125.15	1770173	439882.81	39°42'20.053"N	80°12'17.741"W	127.21	280.33	0.47
6559	2.26	301.4	6556.54	95.74	24.04	-127.19	1770171	439884.04	39°42'20.065"N	80°12'17.767"W	129.44	280.702	0.32
6623	2.28	296.34	6620.49	98.05	25.26	-129.4	1770169	439885.26	39°42'20.076"N	80°12'17.795"W	131.85	281.045	0.31
6686	2.29	282.32	6683.44	100.13	26.08	-131.76	1770167	439886.08	39°42'20.084"N	80°12'17.825"W	134.31	281.198	0.89
6749	2.19	273.19	6746.39	101.86	26.42	-134.14	1770164	439886.42	39°42'20.088"N	80°12'17.857"W	136.76	281.138	0.58
6813	2.29	267.54	6810.34	103.37	26.43	-136.69	1770162	439886.43	39°42'20.087"N	80°12'17.889"W	139.22	280.945	0.39
6876	2.46	256.79	6873.29	104.63	26.07	-139.26	1770159	439886.07	39°42'20.084"N	80°12'17.921"W	141.68	280.603	0.76
6939	2.3	263.67	6936.24	105.82	25.62	-141.83	1770157	439885.62	39°42'20.079"N	80°12'17.954"W	144.13	280.24	0.52
7002	4.69	207.73	6999.13	105.37	23.2	-144.29	1770154	439883.2	39°42'20.055"N	80°12'17.985"W	146.14	279.135	6.19
7065	9.23	195.49	7061.65	101.19	16.05	-146.84	1770152	439876.05	39°42'19.984"N	80°12'18.017"W	147.71	276.238	7.54
7128	13.82	198.89	7123.37	93.89	4.05	-150.63	1770148	439864.05	39°42'19.865"N	80°12'18.065"W	150.68	271.542	7.36
7191	17.44	204.87	7184.03	85.21	-11.64	-157.03	1770141	439848.36	39°42'19.710"N	80°12'18.145"W	157.47	265.762	6.28
7255	21.63	207.07	7244.33	75.53	-30.85	-166.44	1770132	439829.15	39°42'19.519"N	80°12'18.263"W	169.28	259.499	6.65
7318	28.52	205.76	7301.36	63.55	-54.76	-178.28	1770120	439805.24	39°42'19.282"N	80°12'18.412"W	186.5	252.924	10.97
7381	35.07	206.57	7354.88	48.6	-84.53	-192.92	1770105	439775.48	39°42'18.987"N	80°12'18.597"W	210.63	246.339	10.42
7444	41.93	209.61	7404.16	32.16	-119.06	-211.44	1770087	439740.95	39°42'18.644"N	80°12'18.830"W	242.66	240.617	11.29
7508	43.65	210.17	7451.12	15.1	-156.75	-233.11	1770065	439703.26	39°42'18.270"N	80°12'19.104"W	280.91	236.082	2.75
7571	43.63	209.76	7496.72	-1.91	-194.42	-254.83	1770044	439665.59	39°42'17.896"N	80°12'19.378"W	320.52	232.659	0.45
7633	43.68	209.49	7541.57	-18.89	-231.62	-275.98	1770022	439628.39	39°42'17.526"N	80°12'19.645"W	360.3	229.995	0.31
7696	43.44	208.7	7587.23	-36.48	-269.56	-297.09	1770001	439590.46	39°42'17.150"N	80°12'19.911"W	401.16	227.782	0.94
7759	42.82	208.41	7633.2	-54.3	-307.39	-317.68	1769981	439552.63	39°42'16.774"N	80°12'20.171"W	442.05	225.944	1.03
7822	40.89	214.54	7680.15	-69.75	-343.22	-339.57	1769959	439516.8	39°42'16.419"N	80°12'20.447"W	482.82	224.694	7.18
7885	39.92	227.25	7728.2	-78.32	-373.98	-366.15	1769932	439486.04	39°42'16.113"N	80°12'20.784"W	523.38	224.394	13.15
7949	40.55	237.12	7777.11	-78.88	-399.24	-398.74	1769900	439460.78	39°42'15.860"N	80°12'21.199"W	564.26	224.964	10
8012	42.58	245.17	7824.28	-72.91	-419.33	-435.31	1769863	439440.7	39°42'15.659"N	80°12'21.664"W	604.42	226.071	9.06
8075	42.74	250.22	7870.62	-62.09	-435.52	-474.78	1769824	439424.51	39°42'15.496"N	80°12'22.168"W	644.28	227.47	5.44
8138	45.16	257.97	7916.01	-46.32	-447.42	-516.78	1769782	439412.61	39°42'15.375"N	80°12'22.704"W	683.55	229.115	9.36
8201	48.28	266.62	7959.24	-23.84	-453.47	-562.15	1769736	439406.56	39°42'15.312"N	80°12'23.284"W	722.25	231.108	11.15
8264	51.9	274.15	7999.68	5.52	-453.06	-610.4	1769688	439406.97	39°42'15.312"N	80°12'23.901"W	760.17	233.416	10.81
8328	54.85	281.46	8037.89	41.72	-446.03	-661.22	1769637	439414	39°42'15.378"N	80°12'24.552"W	797.59	235.998	10.26

Received  
Office of Oil & Gas

OCT 07 2015

61-01674

8391	57.88	286.47	8072.8	82.46	-433.34	-712.08	1769586	439426.69	39°42'15.499"N	80°12'25.204"W	833.57	238.677	8.18
8454	61.13	290.98	8104.78	127.31	-415.89	-763.45	1769535	439444.14	39°42'15.668"N	80°12'25.863"W	869.38	241.421	8.04
8517	65.77	296.58	8132.95	176.49	-393.13	-814.96	1769483	439466.89	39°42'15.888"N	80°12'26.524"W	904.83	244.248	10.84
8580	69.86	304.33	8156.76	230.32	-363.55	-865.16	1769433	439496.47	39°42'16.177"N	80°12'27.170"W	938.44	247.207	13.11
8643	74.33	310.99	8176.15	288.09	-326.92	-912.55	1769386	439533.1	39°42'16.535"N	80°12'27.780"W	969.34	250.29	12.31
8706	78.66	314.89	8190.86	348.38	-285.2	-957.36	1769341	439574.82	39°42'16.944"N	80°12'28.357"W	998.93	253.411	9.14
8769	78.7	315.61	8203.23	409.59	-241.32	-1000.85	1769298	439618.69	39°42'17.374"N	80°12'28.918"W	1029.53	256.444	1.12
8833	82.44	315.63	8213.71	472.2	-196.21	-1045	1769253	439663.8	39°42'17.817"N	80°12'29.487"W	1063.26	259.566	5.84
8896	89.11	315.57	8218.35	534.47	-151.34	-1088.93	1769210	439708.66	39°42'18.257"N	80°12'30.054"W	1099.4	262.087	10.59
8960	90.12	319.43	8218.78	598.16	-104.17	-1132.16	1769166	439755.84	39°42'18.719"N	80°12'30.612"W	1136.94	264.743	6.23
9023	89.91	322.82	8218.77	661.11	-55.13	-1171.69	1769127	439804.87	39°42'19.201"N	80°12'31.123"W	1172.99	267.306	5.39
9086	91.14	324.62	8218.19	724.1	-4.35	-1208.97	1769090	439855.65	39°42'19.700"N	80°12'31.605"W	1208.98	269.794	3.46
9149	91.51	325.89	8216.73	787.04	47.4	-1244.86	1769054	439907.4	39°42'20.209"N	80°12'32.069"W	1245.77	272.181	2.1
9213	91.48	324.56	8215.06	850.96	99.95	-1281.35	1769017	439959.95	39°42'20.725"N	80°12'32.541"W	1285.25	274.46	2.08
9276	91.45	324.75	8213.45	913.92	151.32	-1317.79	1768981	440011.32	39°42'21.230"N	80°12'33.013"W	1326.45	276.551	0.31
9339	91.75	325.88	8211.69	976.84	203.11	-1353.62	1768945	440063.1	39°42'21.739"N	80°12'33.476"W	1368.78	278.533	1.86
9402	90.89	325.2	8210.24	1039.76	255.04	-1389.26	1768909	440115.02	39°42'22.249"N	80°12'33.938"W	1412.48	280.402	1.74
9465	90.62	323.58	8209.41	1102.73	306.25	-1425.94	1768873	440166.23	39°42'22.752"N	80°12'34.412"W	1458.45	282.121	2.61
9528	91.29	323.83	8208.36	1165.72	357.02	-1463.23	1768835	440217.99	39°42'23.251"N	80°12'34.894"W	1506.15	283.712	1.14
9590	90.77	326.03	8207.25	1227.67	407.75	-1498.84	1768800	440267.73	39°42'23.750"N	80°12'35.355"W	1553.31	285.219	3.65
9654	90.62	325.46	8206.47	1291.59	460.65	-1534.86	1768764	440320.62	39°42'24.270"N	80°12'35.821"W	1602.5	286.706	0.92
9717	90.55	326.78	8205.83	1354.49	512.95	-1569.98	1768729	440372.92	39°42'24.784"N	80°12'36.276"W	1651.65	288.093	2.1
9781	90.43	325.66	8205.28	1418.39	566.14	-1605.56	1768693	440426.11	39°42'25.307"N	80°12'36.737"W	1702.45	289.423	1.76
9845	90.55	326.37	8204.73	1482.3	619.2	-1641.34	1768657	440479.17	39°42'25.828"N	80°12'37.200"W	1754.25	290.669	1.13
9908	90.62	326.05	8204.09	1545.2	671.56	-1676.37	1768622	440531.52	39°42'26.343"N	80°12'37.653"W	1805.88	291.831	0.52
9971	90.46	325.61	8203.49	1608.12	723.68	-1711.75	1768587	440583.64	39°42'26.855"N	80°12'38.111"W	1858.44	292.917	0.74
10035	90.31	323.46	8203.06	1672.09	775.8	-1748.88	1768550	440635.76	39°42'27.368"N	80°12'38.592"W	1913.23	293.922	3.37
10098	90.18	320.59	8202.79	1735.07	825.46	-1787.64	1768511	440685.41	39°42'27.855"N	80°12'39.093"W	1969.02	294.786	4.56
10161	90.43	320.98	8202.46	1798.02	874.27	-1827.47	1768471	440734.22	39°42'28.335"N	80°12'39.607"W	2025.84	295.567	0.74
10224	90.55	323.08	8201.92	1861.01	923.93	-1866.23	1768432	440783.87	39°42'28.822"N	80°12'40.108"W	2082.42	296.339	3.34
10287	90.68	324.7	8201.24	1924	974.82	-1903.36	1768395	440834.76	39°42'29.322"N	80°12'40.588"W	2138.47	297.12	2.58
10351	90.43	324.66	8200.62	1987.97	1027.04	-1940.35	1768358	440886.98	39°42'29.835"N	80°12'41.067"W	2195.4	297.893	0.4
10414	89.97	322.98	8200.4	2050.96	1077.89	-1977.54	1768321	440937.82	39°42'30.335"N	80°12'41.548"W	2252.23	298.593	2.76
10477	90.46	321.17	8200.17	2113.94	1127.58	-2016.26	1768282	440987.51	39°42'30.823"N	80°12'42.048"W	2310.14	299.216	2.98
10538	90.31	320.76	8199.76	2174.9	1174.96	-2054.68	1768244	441034.89	39°42'31.288"N	80°12'42.545"W	2366.91	299.763	0.72
10591	90.58	320.65	8199.27	2237.85	1223.72	-2094.58	1768204	441083.64	39°42'31.767"N	80°12'43.060"W	2425.85	300.295	0.46
10654	90.55	321.38	8198.66	2300.81	1272.69	-2134.21	1768164	441132.61	39°42'32.248"N	80°12'43.572"W	2484.87	300.809	1.16
10717	90.55	322.78	8198.31	2363.8	1322.38	-2172.93	1768126	441182.3	39°42'32.736"N	80°12'44.073"W	2543.68	301.324	2.31
10789	89.63	323.2	8198.45	2425.8	1371.89	-2210.25	1768088	441231.81	39°42'33.222"N	80°12'44.555"W	2601.4	301.828	1.04
10851	90.52	325.34	8198.36	2488.78	1423.03	-2247.83	1768052	441282.94	39°42'33.725"N	80°12'45.031"W	2659.73	302.346	3.68
10914	90.16	324.44	8197.97	2552.74	1475.38	-2283.84	1768015	441335.29	39°42'34.239"N	80°12'45.507"W	2718.95	302.863	1.5
10979	90.46	326.11	8197.62	2615.69	1527.16	-2319.73	1767979	441387.07	39°42'34.748"N	80°12'45.972"W	2777.29	303.358	2.69
11042	90.06	323.72	8197.34	2678.65	1578.71	-2355.94	1767943	441438.61	39°42'35.255"N	80°12'46.440"W	2835.97	303.826	3.85
11105	90.22	323.17	8197.18	2741.65	1629.31	-2393.46	1767905	441489.22	39°42'35.752"N	80°12'46.925"W	2895.39	304.245	0.91
11168	90.12	323.47	8197	2804.65	1679.84	-2431.09	1767867	441539.74	39°42'36.248"N	80°12'47.412"W	2955.01	304.644	0.5
11232	90.49	323.74	8196.65	2868.64	1731.35	-2469.06	1767829	441591.25	39°42'36.754"N	80°12'47.903"W	3015.6	305.039	0.72
11295	90.34	324.15	8196.2	2931.63	1782.29	-2506.14	1767792	441642.18	39°42'37.255"N	80°12'48.383"W	3075.27	305.419	0.69
11359	90.58	325.33	8195.68	2995.6	1834.54	-2543.09	1767755	441694.43	39°42'37.768"N	80°12'48.861"W	3135.74	305.806	1.88

Office of the  
10/30/2015

61-01674

11422	91.17	326.2	8194.72	3058.52	1886.62	-2578.53	1767720	441746.51	39°42'38.280"N	80°12'49.320"W	3195.02	306.192	1.67
11484	90.31	325.37	8193.92	3120.44	1937.88	-2613.38	1767685	441797.77	39°42'38.784"N	80°12'49.771"W	3253.49	306.558	1.93
11548	90.89	326.45	8193.25	3184.35	1990.88	-2649.25	1767649	441850.76	39°42'39.305"N	80°12'50.235"W	3313.93	306.924	1.92
11611	89.66	323.87	8192.95	3247.3	2042.58	-2685.24	1767613	441902.46	39°42'39.813"N	80°12'50.701"W	3373.82	307.259	4.54
11674	90.71	324.39	8192.75	3310.28	2093.63	-2722.15	1767576	441953.51	39°42'40.315"N	80°12'51.178"W	3434.16	307.564	1.86
11737	89.91	323.88	8192.4	3373.27	2144.69	-2759.06	1767540	442004.56	39°42'40.816"N	80°12'51.656"W	3494.58	307.859	1.51
11801	90	323.27	8192.45	3437.27	2196.18	-2797.07	1767502	442056.05	39°42'41.322"N	80°12'52.147"W	3556.23	308.138	0.96
11863	90.28	322.91	8192.3	3499.27	2245.76	-2834.3	1767464	442105.62	39°42'41.809"N	80°12'52.629"W	3616.17	308.392	0.74
11927	90.49	320.58	8191.87	3563.25	2296.01	-2873.92	1767425	442155.87	39°42'42.303"N	80°12'53.141"W	3678.46	308.622	3.66
11990	89.6	318.07	8191.82	3626.11	2343.79	-2914.98	1767384	442203.65	39°42'42.772"N	80°12'53.671"W	3740.38	308.801	4.23
12053	89.57	318.39	8192.28	3688.89	2390.77	-2956.95	1767342	442254.13	39°42'43.233"N	80°12'54.213"W	3802.54	308.956	0.51
12116	89.72	316.33	8192.67	3751.58	2437.11	-2999.62	1767299	442296.97	39°42'43.687"N	80°12'54.764"W	3864.87	309.093	3.28
12178	89.72	318.45	8192.97	3813.28	2482.74	-3041.59	1767257	442342.59	39°42'44.135"N	80°12'55.305"W	3926.23	309.224	3.42
12242	89.54	319.4	8193.39	3877.12	2530.99	-3083.64	1767215	442390.83	39°42'44.608"N	80°12'55.848"W	3989.33	309.378	1.51
12305	89.94	321.49	8193.67	3940.05	2579.56	-3123.76	1767175	442439.4	39°42'45.085"N	80°12'56.367"W	4051.17	309.549	3.38
12369	90	322.97	8193.71	4004.04	2630.15	-3162.95	1767136	442489.99	39°42'45.582"N	80°12'56.873"W	4113.63	309.745	2.31
12432	89.91	325.39	8193.76	4067.02	2681.23	-3199.82	1767099	442541.06	39°42'46.084"N	80°12'57.350"W	4174.67	309.961	3.84
12494	89.97	328.34	8193.82	4128.87	2733.14	-3233.71	1767065	442592.97	39°42'46.594"N	80°12'57.789"W	4234.02	310.205	4.76
12557	90.12	331.04	8193.77	4191.44	2787.52	-3265.5	1767033	442647.35	39°42'47.129"N	80°12'58.202"W	4293.46	310.485	4.29
12620	89.75	330.26	8193.84	4253.88	2842.43	-3296.38	1767002	442702.26	39°42'47.670"N	80°12'58.602"W	4352.65	310.771	1.37
12684	89.94	330.52	8194.02	4317.35	2898.08	-3328	1766971	442757.9	39°42'48.217"N	80°12'59.013"W	4412.98	311.05	0.5
12747	89.45	329.12	8194.35	4379.9	2952.53	-3359.67	1766939	442812.36	39°42'48.753"N	80°12'59.423"W	4472.68	311.31	2.35
12810	89.45	326.59	8194.96	4442.66	3005.87	-3393.19	1766905	442865.69	39°42'49.277"N	80°12'59.858"W	4533.1	311.536	4.02
12874	89.2	324.18	8195.71	4506.6	3058.53	-3429.54	1766869	442918.35	39°42'49.795"N	80°13'00.328"W	4595.25	311.727	3.79
12937	89.2	321.87	8196.59	4569.59	3108.86	-3467.42	1766831	442968.67	39°42'50.289"N	80°13'00.818"W	4657.04	311.879	3.67
13000	89.91	323.04	8197.08	4632.58	3158.8	-3505.81	1766793	443018.61	39°42'50.780"N	80°13'01.314"W	4718.98	312.019	2.17
13063	89.91	323.19	8197.18	4695.58	3209.19	-3543.63	1766755	443069.39	39°42'51.275"N	80°13'01.803"W	4780.82	312.165	0.24
13126	89.88	322.22	8197.29	4758.58	3259.31	-3581.8	1766717	443119.11	39°42'51.767"N	80°13'02.297"W	4842.77	312.301	1.54
13190	90	320.76	8197.36	4822.56	3309.39	-3621.65	1766677	443169.19	39°42'52.259"N	80°13'02.812"W	4905.95	312.42	2.29
13252	90.12	320.62	8197.3	4884.51	3357.36	-3660.92	1766638	443217.16	39°42'52.730"N	80°13'03.320"W	4967.32	312.523	0.3
13316	90.25	320.2	8197.09	4948.44	3406.68	-3701.71	1766597	443266.47	39°42'53.214"N	80°13'03.847"W	5030.72	312.623	0.69
13378	90.34	320.52	8196.77	5010.37	3454.42	-3741.26	1766557	443314.22	39°42'53.683"N	80°13'04.358"W	5092.16	312.717	0.54
13440	90.22	320.45	8196.47	5072.31	3502.25	-3780.71	1766518	443362.04	39°42'54.152"N	80°13'04.867"W	5153.6	312.81	0.22
13503	90.09	320.21	8196.3	5135.24	3550.75	-3820.93	1766478	443410.53	39°42'54.628"N	80°13'05.387"W	5216.06	312.901	0.43
13566	90.06	320.55	8195.97	5202.12	3648.67	-3901.8	1766438	443459.04	39°42'55.104"N	80°13'05.906"W	5278.53	312.99	0.52
13630	90.22	319.42	8195.82	5325.03	3745.25	-3982.71	1766397	443508.45	39°42'55.589"N	80°13'06.432"W	5341.99	313.08	0.26
13693	90.25	320.8	8195.56	5387.95	3794.82	-4021.6	1766356	443556.69	39°42'56.063"N	80°13'06.955"W	5404.53	313.16	1.81
13756	90.18	322.97	8195.32	5450.93	3794.82	-4021.6	1766316	443605.03	39°42'56.538"N	80°13'07.477"W	5467.08	313.24	2.19
13819	90.23	323.6	8195.12	5514.93	3846.12	-4059.86	1766277	443654.59	39°42'57.024"N	80°13'07.980"W	5529.36	313.338	3.45
13883	90.18	320.8	8195.44	5577.92	3895.89	-4098.47	1766239	443705.89	39°42'57.528"N	80°13'08.474"W	5592.41	313.451	0.98
13946	89.23	320.8	8195.44	5577.92	3895.89	-4098.47	1766200	443755.66	39°42'58.017"N	80°13'08.974"W	5654.68	313.548	4.69
14009	89.94	318.12	8195.9	5640.79	3943.76	-4139.41	1766159	443803.53	39°42'58.487"N	80°13'09.502"W	5717.34	313.613	4.4
14072	89.51	318.19	8196.2	5703.56	3990.69	-4181.44	1766117	443850.45	39°42'58.947"N	80°13'10.045"W	5780.14	313.663	0.69
14135	90	318.1	8196.47	5766.34	4037.62	-4223.47	1766075	443897.38	39°42'59.408"N	80°13'10.588"W	5842.95	313.711	0.79
14198	89.6	319.95	8196.69	5829.18	4085.18	-4264.78	1766034	443944.93	39°42'59.875"N	80°13'11.121"W	5905.68	313.768	3
14262	89.32	322.53	8197.3	5893.14	4135.08	-4304.84	1765994	443994.83	39°43'00.365"N	80°13'11.639"W	5969.14	313.848	4.05
14325	88.92	324.49	8198.26	5956.13	4185.72	-4342.3	1765956	444045.47	39°43'00.862"N	80°13'12.124"W	6031.24	313.948	3.17
14388	89.57	325.32	8199.09	6019.09	4237.26	-4378.52	1765920	444097.01	39°43'01.369"N	80°13'12.592"W	6093.1	314.061	1.67

Received  
Office of Oil & Gas  
OCT 07 2015

61-01674

14451	89.45	326.4	8199.63	6082.01	4289.4	-4413.88	1765885	444149.14	39°43'01.881"N	80°13'13.050"W	6154.78	314.181	1.72
14514	90.15	326.02	8199.85	6144.91	4341.76	-4448.91	1765850	444201.5	39°43'02.396"N	80°13'13.504"W	6216.41	314.302	1.26
14578	90.09	325.45	8199.72	6208.83	4394.65	-4484.95	1765814	444254.39	39°43'02.915"N	80°13'13.970"W	6279.15	314.417	0.9
14640	89.91	323.46	8199.72	6270.81	4445.1	-4520.18	1765778	444304.83	39°43'03.411"N	80°13'14.437"W	6340.21	314.515	3.22
14703	90.06	324.17	8199.73	6333.8	4495.94	-4558.18	1765740	444355.67	39°43'03.911"N	80°13'14.918"W	6402.38	314.606	1.15
14767	89.85	324.14	8199.78	6397.79	4547.82	-4595.66	1765703	444407.55	39°43'04.420"N	80°13'15.403"W	6465.51	314.7	0.33
14829	89.78	322.79	8199.98	6459.79	4597.64	-4632.57	1765666	444457.36	39°43'04.910"N	80°13'15.880"W	6526.79	314.783	2.18
14892	89.88	322.91	8200.17	6522.79	4647.85	-4670.61	1765628	444507.57	39°43'05.403"N	80°13'16.372"W	6589.17	314.86	0.25
14955	89.48	324.02	8200.52	6585.78	4698.47	-4708.12	1765591	444558.19	39°43'05.900"N	80°13'16.857"W	6651.47	314.941	1.87
15018	89.78	323.98	8200.93	6648.77	4749.44	-4745.15	1765554	444609.15	39°43'06.401"N	80°13'17.336"W	6713.69	315.026	0.48
15081	89.69	324.53	8201.22	6711.75	4800.57	-4781.95	1765517	444660.28	39°43'06.903"N	80°13'17.813"W	6775.88	315.111	0.88
15144	89.45	323.59	8201.69	6774.74	4851.57	-4818.93	1765480	444711.28	39°43'07.405"N	80°13'18.291"W	6838.11	315.193	1.54
15208	89.63	321.18	8202.21	6838.73	4902.27	-4857.98	1765441	444761.97	39°43'07.902"N	80°13'18.796"W	6901.61	315.26	3.78
15271	89.57	321.41	8202.65	6901.7	4951.43	-4897.38	1765401	444811.13	39°43'08.385"N	80°13'19.305"W	6964.26	315.314	0.38
15334	89.57	320.76	8203.12	6964.66	5000.44	-4936.95	1765362	444860.14	39°43'08.866"N	80°13'19.817"W	7026.94	315.366	1.03
15398	89.6	321.51	8203.58	7028.63	5050.28	-4977.11	1765322	444909.97	39°43'09.356"N	80°13'20.336"W	7090.62	315.418	1.17
15461	89.57	323.44	8204.04	7091.62	5100.24	-5015.48	1765283	444959.93	39°43'09.846"N	80°13'20.832"W	7153.14	315.48	3.06
15524	89.82	324.42	8204.38	7154.61	5151.16	-5052.57	1765246	445010.85	39°43'10.347"N	80°13'21.312"W	7215.46	315.554	1.61
15586	89.72	322.59	8204.63	7216.6	5201	-5089.44	1765209	445060.68	39°43'10.836"N	80°13'21.789"W	7276.87	315.621	2.96
15649	90.03	322.42	8204.76	7279.6	5250.98	-5127.79	1765171	445110.67	39°43'11.327"N	80°13'22.285"W	7339.42	315.68	0.56
15711	90.15	324.82	8204.67	7341.59	5300.89	-5164.56	1765134	445160.57	39°43'11.817"N	80°13'22.760"W	7400.82	315.746	3.88
15774	90.18	325.58	8204.48	7404.55	5352.63	-5200.52	1765098	445212.3	39°43'12.326"N	80°13'23.226"W	7462.97	315.826	1.21
15837	90.28	324.14	8204.23	7467.51	5404.14	-5236.78	1765062	445263.82	39°43'12.832"N	80°13'23.695"W	7525.2	315.901	2.29
15883	90.06	322.32	8204.09	7513.51	5440.99	-5264.31	1765034	445300.66	39°43'13.194"N	80°13'24.051"W	7570.82	315.946	3.99
15908	90.06	322.32	8204.07	7538.51	5460.77	-5279.59	1765019	445320.45	39°43'13.388"N	80°13'24.249"W	7595.67	315.966	0

Received  
Office of Oil & Gas

OCT 07 2015

HOLE AND CASING SECTIONS Ref Wellbore: Coastal 1H AWB Ref Wellpath: Coastal 1H AWP Proj: 15908'

String/Diameter	Start MD [ft]	End MD [ft]	Interval [ft]	North [ft]	East [ft]	Grid East [US ft]	Grid North [US ft]	Longitude [ft]	Latitude [ft]	Start E/W [ft]	End E/W [ft]	Start N/S [ft]	End N/S [ft]	Comment
9.625in Casing	18	1800	1782	18	1799.98	0	0	5.01	-1.94					

T A R G E T S

Name	MD [ft]	TVD [ft]	North [ft]	East [ft]	Grid East [US ft]	Grid North [US ft]	Longitude [ft]	Latitude [ft]	Shape	Comment
Coastal 1H HL Pt 1	1420	4790.2	-6175.49	1764.123	444649.9	39°43'06.680"N	80°13'35.6	point		
Coastal 1H HL Pt 2	1420	5177.49	-5810.28	1764488	445037.2	39°43'10.580"N	80°13'31.0	point		
Coastal 1H HL Pt 3	1420	5577.66	-5198.6	1765100	445437.3	39°43'14.580"N	80°13'23.2	point		
Coastal 1H HL Pt 4	1420	5755.45	-4851.85	1765447	445615.1	39°43'16.380"N	80°13'18.8	point		
Coastal 1H LP Rev-1	8200	-162.31	-1046.26	1769252	439697.7	39°42'18.180"N	80°12'29.5	point		
Coastal 1H PBHL Rev-1	8200	5459.03	-5282.32	1765016	445318.7	39°43'13.380"N	80°13'24.2	point		

WELLPATH COMPOSITION Ref Wellbore: Coastal 1H AWB Ref Wellpath: Coastal 1H AWP Proj: 15908'

Log Name/Comment	Start MD [ft]	End MD [ft]	Pos Unc Model
01_VES Gyro 100'-6424'	18		6432 Generic Gyro - northseeking (Standard)
02_BH ATC <B-1/2"> {6432}{6496-15883}	6432		15883 NavTrak (AT Curve Short Spaced)
Projection to bit	15883		15908 Blind Drilling (std)