

LATITUDE 39° 40'

80° 15'

LONGITUDE



7'5 OGIS topo location

7.5' loc	<u>2.61 S</u>	15' loc	<u>2.61 S</u>
	<u>0.05 W</u>	(calc.)	<u>0.05 W</u>

Company \_\_\_\_\_

Farm \_\_\_\_\_ 1 \_\_\_\_\_

Quad Wadestown 7.5 Manassas

County \_\_\_\_\_ EC

District Clay

WELL LOCATION MAP

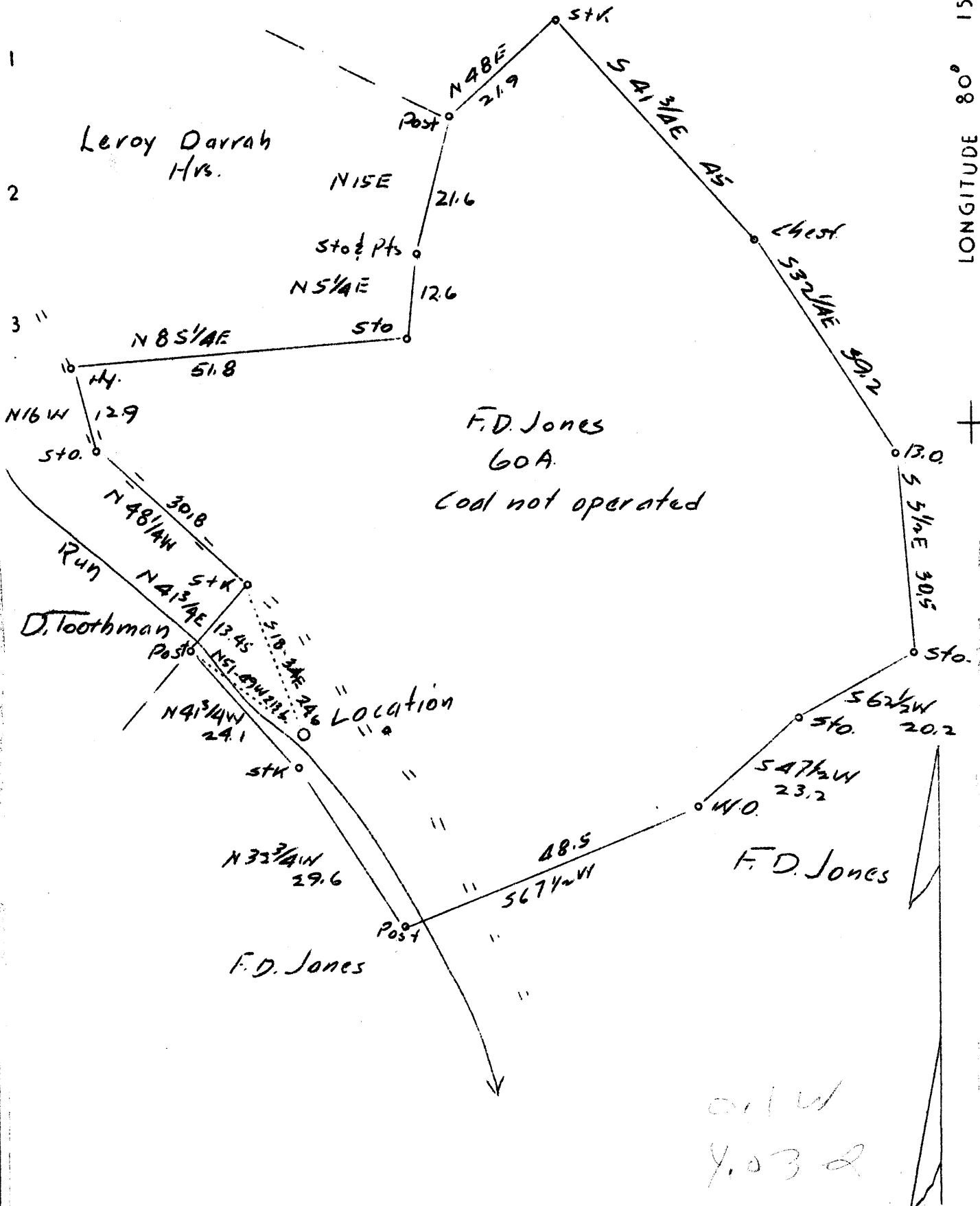
File No. 061-89

now 061-16 34

CLOP

6-6

(066)



Company	Harry L. Tennant
Address	Wadestown, W. Va.
Farm	F. D. Jones
Tract One Acres	60 Lease No.
Well (farm) No.	One Serial No.
Elevation (Spirit Level)	1012'
Quadrangle	Marionton <span style="border: 1px solid black; border-radius: 50%; padding: 2px;">EC</span>
County	Monongalia District Clay
Engineer	A. L. Headley
Engineer's Registration No.	
File No.	Drawing No.
Date	May 25, 1937 Scale 20 poles-1"

STATE OF WEST VIRGINIA  
 Department of Mines  
 OIL AND GAS DIVISION  
 CHARLESTON

WELL LOCATION MAP

File No. MON-89  
 Now: 1634

+ Denotes location of well on United States Topographic Maps, scale 1 to 62,500, latitude and longitude lines being represented by border lines as shown.

— Denotes one inch spaces on border line of original tracing.

MOV-89

WEST VIRGINIA DEPARTMENT OF MINES  
OIL AND GAS DIVISION

WELL RECORD

Permit No. 89

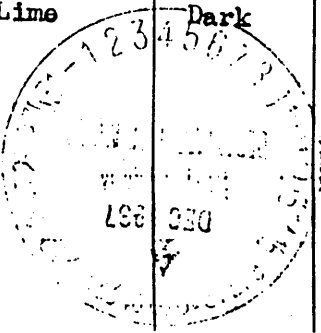
Oil or Gas Well Oil  
(Kind)

Company Harry L. Tennant  
Address Wadestown, W. Va. - Route #1  
Farm F. D. Jones Acres 60  
Location (waters) Bennefield Ok.  
Well No. 1 Elev. 1012  
District Clay County Monongalia  
The surface of tract is owned in fee by F. D. Jones  
Route #2 Address Fairview, W. Va.  
Mineral rights are owned by Little Kanawha  
Syndicate Address Morgantown  
Drilling commenced June 19, 1937  
Drilling completed Oct. 8, 1937  
Date shot Oct. 8, 1937 Depth of shot 3139-3147  
Open Flow 16/10ths Water in 2" Inch  
/10ths Merc. in Inch  
Volume 190,080 (Soon blew down) Cu. Ft.  
Rock Pressure 7 lbs. hrs.  
Oil 18 bbls., 1st 24 hrs.  
Fresh water 18 feet 1618 & 1665 feet  
Salt water 18 feet 1618 & 1665 feet

Casing and Tubing	Used in Drilling	Left in Well	Packers
Size			Kind of Packer
16			
13	61	61	
10	774		Size of
8 3/4	1262	1262	
6 5/8	1654	1654	Depth set
5 3/16	2155	2155	
3			Perf. top 3146'
2	3162	3162	Perf. bottom 3149'
Liners Used	-	-	Perf. top
			Perf. bottom

CASING CEMENTED - SIZE - No. FT. - Date  
COAL WAS ENCOUNTERED AT 350 FEET 72 INCHES  
644 FEET 72 INCHES  
735 FEET 84 INCHES

Formation	Color	Hard or Soft	Top	Bottom	Oil Gas or Water	Depth Found	Remarks
Conductor	-	-	0	14			
Shells	Dark	-	14	150	Water	18'	Hole full
Slate	Dark	Soft	150	300			
Bluff Sand	White	Hard	300	340			
Slate	Dark	Soft	340	350			
Fairview Coal	Black	Soft	350	356			
Slate & lime shells	Dark	-	356	500			
Lime	White	Hard	500	644			
Mapletown Coal	Black	Soft	644	650			
Lime	White	Hard	650	735			
Pitts. Coal	Black	Soft	735	742			
Lime & Slate Shells	Dark	-	742	1090			
Sand	White	Hard	1090	1100			
Red Rock	Red	Soft	1100	1150			
Little Dunkard Sand	White	Hard	1150	1185			
Slate	Dark	Soft	1185	1260			
Big Dunkard Sand	White	Hard	1260	1280			
Slate	Dark	Soft	1280	1340			
Gas Sand	White	Hard	1340	1395			
Slate	Dark	Soft	1395	1500			
Salt Sand	White	Hard	1500	1716	Water	1618' & 1665'	
Lime & Slate Sand	Dark	-	1716	1735			
Sand	White	Hard	1735	1765			
Slate	Dark	Soft	1765	1825			
Red Rock	Red	Soft	1825	1935			
Slate	Dark	Soft	1935	1940			
Lime & Shells	Dark	Soft	1940	1980			
Pencil Cave	Dark	Soft	1980	1989			
Big Lime	Dark	Hard	1989	2039			



Formation	Color	Hard or Soft	Top	Bottom	Oil, Gas or Water	Depth Found	Remarks	
Big Injun Sand	White	Hard	2039	2233	Oil & Water	2138-2144	Steel line	
Slate & Lime Shells	-	-	2233	2280				
Gritty Lime	White	Hard	2280	2345				
Slate & Lime Shells	-	-	2345	2530				
Sand	White	Hard	2530	2550				
Slate & Shells	Dark	Soft	2550	2618				
50 ft. Sand	White	Hard	2618	2642	Gas	2623-2633	Steel Line	
Slate	Black	Soft	2642	2658	(16/10 water in 2" = 190,080 cu.ft.			
30 ft. Sand	White	Hard	2658	2730	Blew Down			
Shells	-	-	2730	2745				
Red Rock	Red	Soft	2745	2750				
Sand	White	Hard	2750	2765				
Slate & Shells	Dark	Soft	2765	2780				
Sand	White	Hard	2780	2800				
Red Rock	Red	Soft	2800	2810				
Sand	White	Hard	2810	2825				
Red Rock	Red	Soft	2825	2835				
Sand	White	Hard	2835	2850				
Slate & Shells	Dark	Soft	2850	2917				
Sandy Lime	White	Hard	2917	2934				
Red Rock	Red	Soft	2934	2938				
Gordon Sand	White	Hard	2938	2960				
Slate & Sand	-	-	2960	2985				
Sand	White	Hard	2985	3012				
Slate	Dark	Soft	3012	3055				
4th Sand	White	Hard	3055	3070				
Slate & Shells	Dark	Soft	3070	3139				
5th Sand	White	Hard	3139	3148	Oil	3142-3146		
Total Depth - 3162								

Date Dec 17, 1937

APPROVED Harry L Tennant, Owner

By..... (Title)