

WW-7
8-30-06



West Virginia Department of Environmental Protection
Office of Oil and Gas
WELL LOCATION FORM: GPS

API: 47-061-01567 WELL NO.: SC-1A
 FARM NAME: RALPH & BETTY JO SIX
 RESPONSIBLE PARTY NAME: WEST VIRGINIA LAND RESOURCES INC.
 COUNTY: MONONGALIA DISTRICT: BATTELLE
 QUADRANGLE: WADESTOWN W.VA, PA
 SURFACE OWNER: GEORGE D. SIX
 ROYALTY OWNER: _____
 UTM GPS NORTHING: 4,390,102 m
 UTM GPS EASTING: 554,162 m GPS ELEVATION: 365 m (1197')

The Responsible Party named above has chosen to submit GPS coordinates in lieu of preparing a new well location plat for a plugging permit or assigned API number on the above well. The Office of Oil and Gas will not accept GPS coordinates that do not meet the following requirements:

1. Datum: NAD 1983, Zone: 17 North, Coordinate Units: meters, Altitude: height above mean sea level (MSL) – meters.
2. Accuracy to Datum – 3.05 meters
3. Data Collection Method:

Survey grade GPS : Post Processed Differential _____
 Real-Time Differential

Mapping Grade GPS _____ : Post Processed Differential _____
 Real-Time Differential _____

4. **Letter size copy of the topography map showing the well location.**

I the undersigned, hereby certify this data is correct to the best of my knowledge and belief and shows all the information required by law and the regulations issued and prescribed by the Office of Oil and Gas.

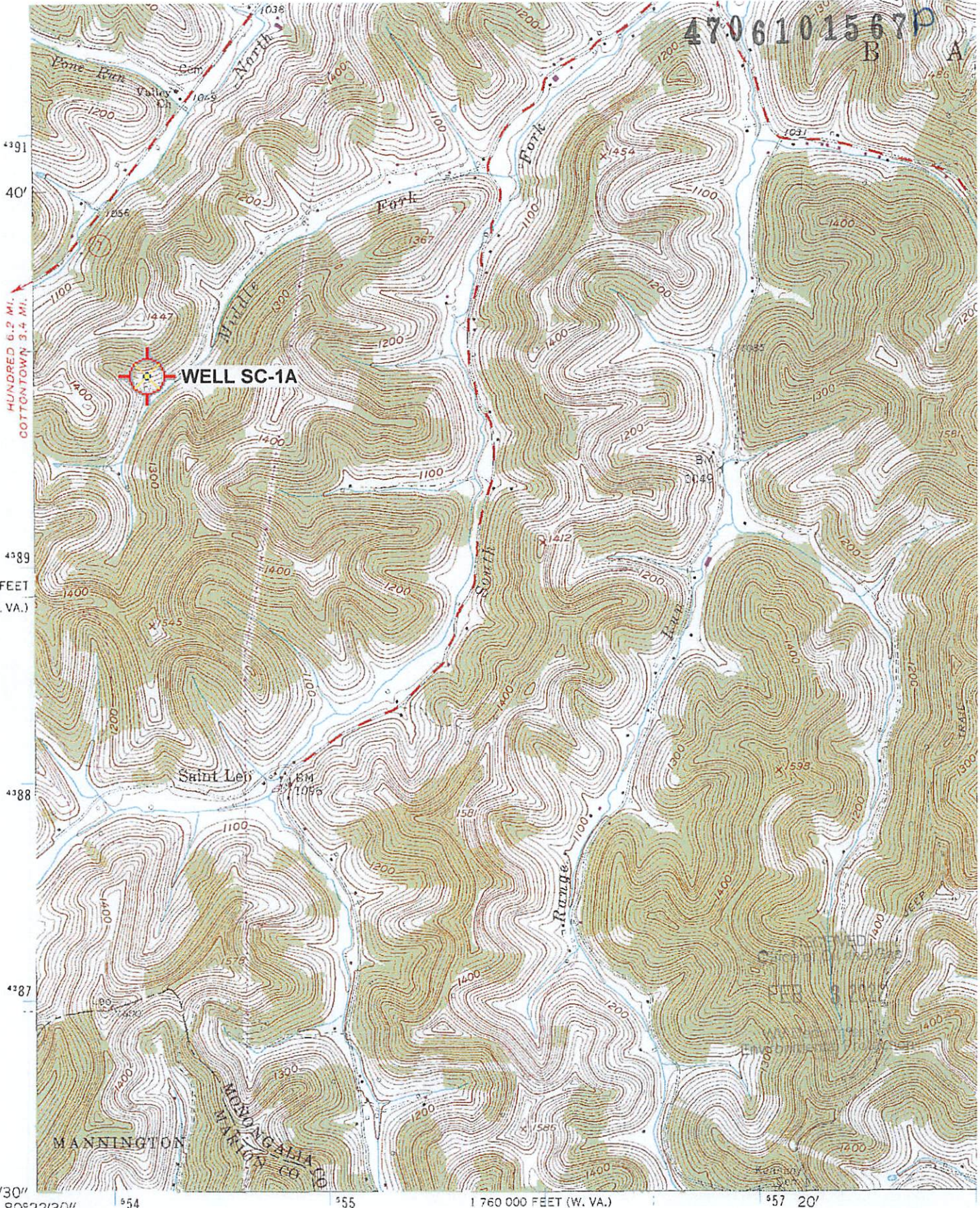
 Professional Surveyor DECEMBER 15, 2021
 Signature Title Date

RECEIVED
Office of Oil and Gas

FEB 3 2022

WV Department of
Environmental Protection

04/29/2022



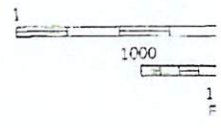
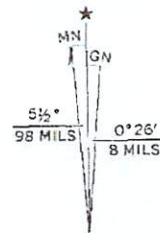
Mapped, edited, and published by the Geological Survey

Control by USGS and USC&GS

Topography from aerial photographs by photogrammetric methods
Aerial photographs taken 1956. Field check 1958

Polyconic projection. 1927 North American datum
10,000-foot grids based on West Virginia coordinate system,
north zone, and Pennsylvania coordinate system, south zone
1000-meter Universal Transverse Mercator grid ticks,
zone 17, shown in blue

(GLOVER GAP)
4953 III SW



UTM GRID AND 1976 MAGNETIC NORTH
DECLINATION AT CENTER OF SHEET

04/29/2022