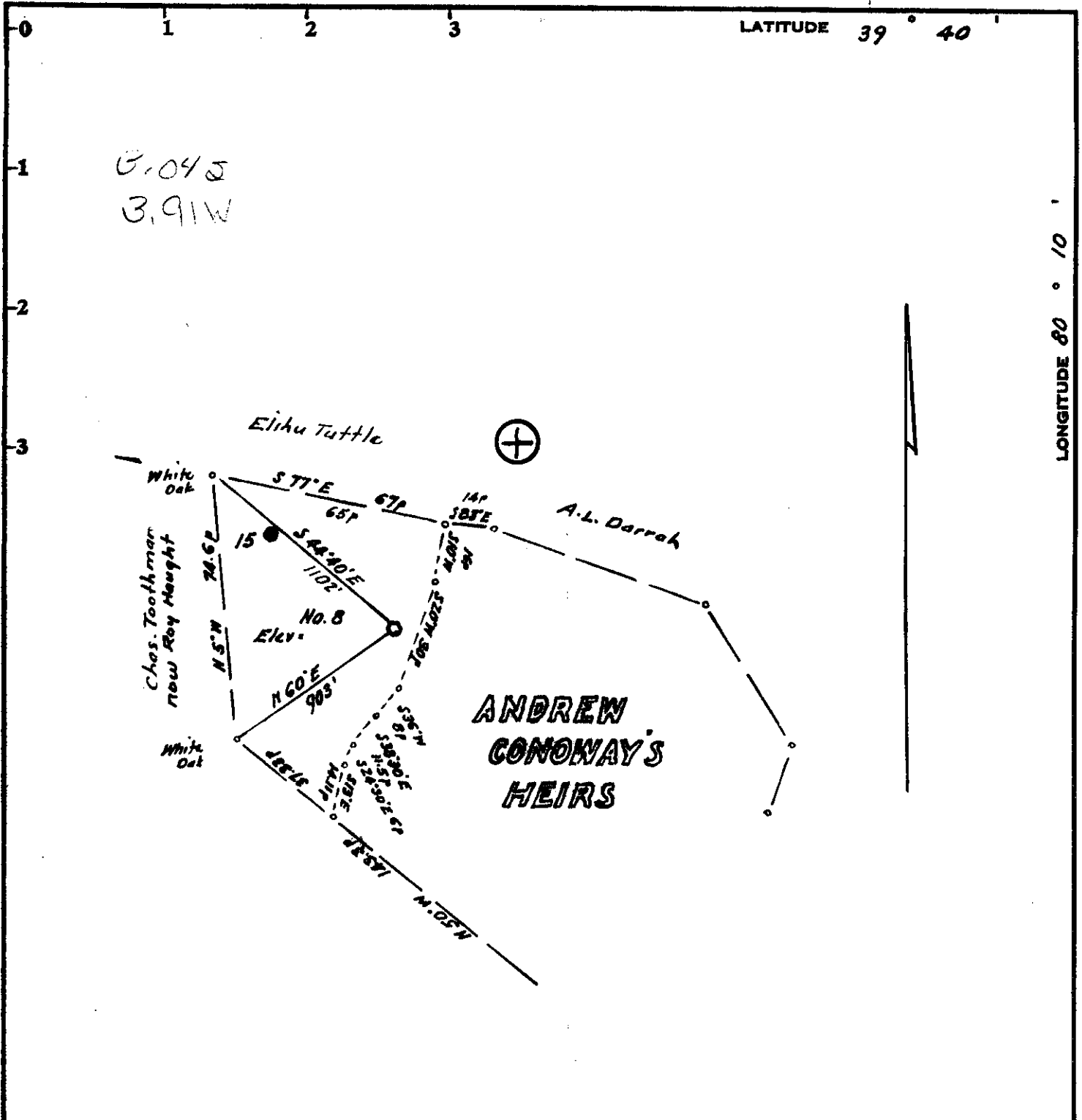


U/12/74 CEM



Minimum Error of Closure 1 in 200'

Source of Elevation Elev. Well No. 15 = 1347

I, the undersigned, hereby certify that this map is correct to the best of my knowledge and belief and shows all the information required by paragraph 6 of the rules and regulations of the oil and gas section of the mining laws of West Virginia.

- Fracture.....
- New Location.....
- Drill Deeper.....
- Abandonment.....

Signed: M. Stobbs  
 Squares: N S E W

Company Energy Explorations, Inc.  
 Address 1900 Fifth Ave. North, Suite 1120, Birmingham, Alabama  
 Farm Andrew Conway's Heirs  
 Tract Acres 185 Lease No. \_\_\_\_\_  
 Well (Farm) No. Eight Serial No. \_\_\_\_\_  
 Elevation (Spirit Level) 1407  
 Quadrangle Blacksville WC  
 County Monongalia District Clay  
 Engineer M. Stobbs  
 Engineer's Registration No. 1227  
 File No. \_\_\_\_\_ Drawing No. \_\_\_\_\_  
 Date June 10, 1974 Scale 1" = 400' 660'

STATE OF WEST VIRGINIA  
 DEPARTMENT OF MINES  
 OIL AND GAS DIVISION  
 CHARLESTON

WELL LOCATION MAP

FILE NO. Mon-700-A  
 NOW: 061-01496

+ Denotes location of well on United States Topographic Maps, scale 1 to 62,500, latitude and longitude lines being represented by border lines as shown.

- Denotes one inch spaces on border line of original tracing. 47 061