

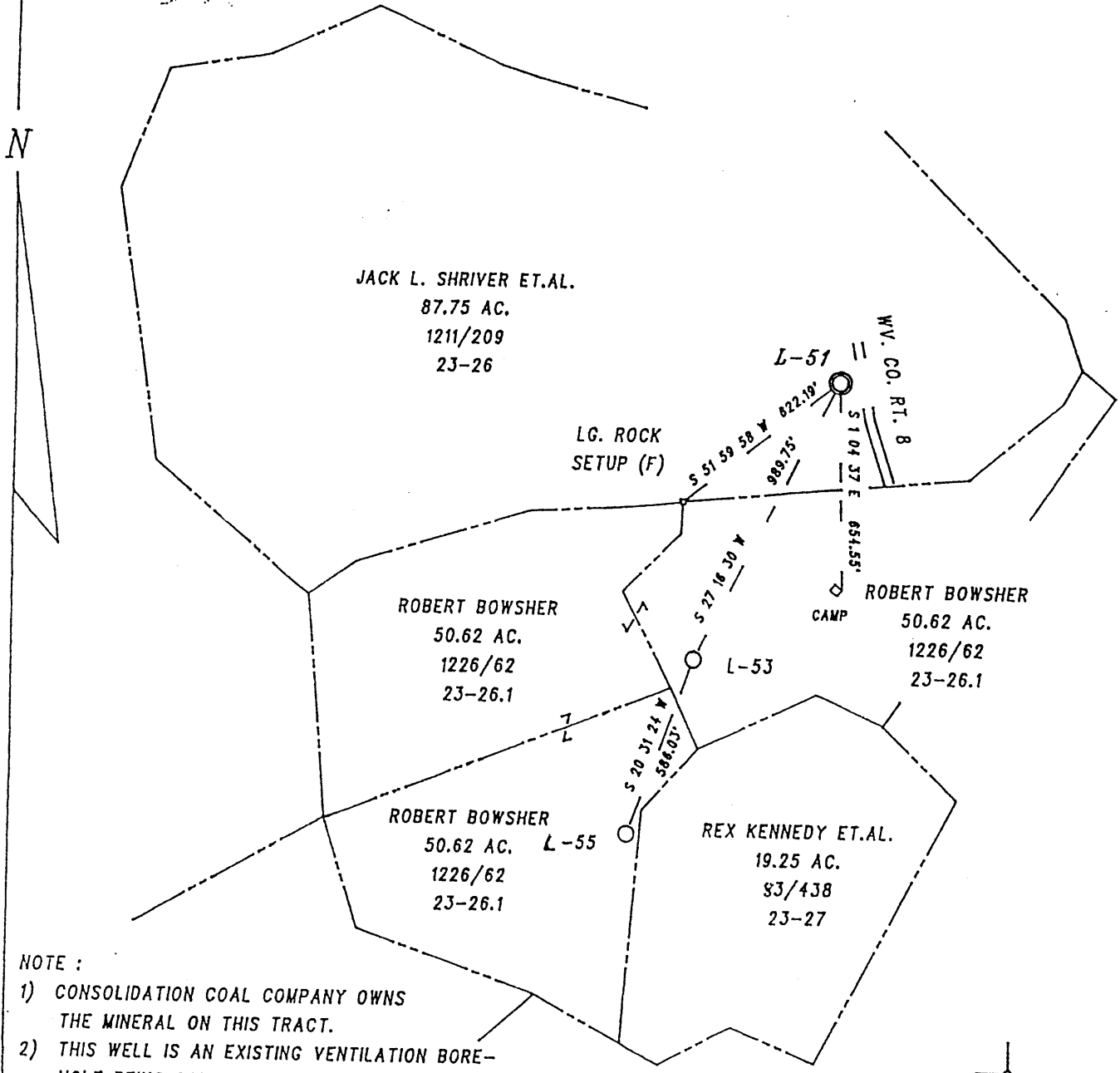
2119.7'

(+) DENOTES LOCATION OF WELL ON U.S.G.S. TOPOGRAPHIC MAP

LATITUDE 39° 40' 00"

LONGITUDE 80° 20' 00"

14441.6'



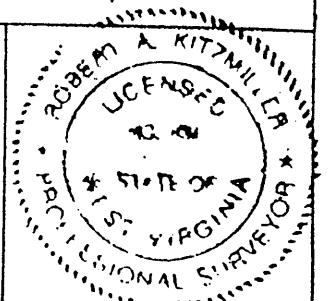
NOTE :

- 1) CONSOLIDATION COAL COMPANY OWNS THE MINERAL ON THIS TRACT.
- 2) THIS WELL IS AN EXISTING VENTILATION BORE-HOLE BEING CONVERTED TO A CBM GOB WELL.

FILE NO. 02-HH-01  
 DRAWN BY : R.A. KITZMILLER  
 SCALE : 1 : 500'  
 MIN. DEGREE OF ACCURACY 1 / 200'  
 PROVEN SOURCE OF ELEVATION : \_\_\_\_\_  
 \_\_\_\_\_  
 SPOT ELEVATION \_\_\_\_\_

I THE UNDERSIGNED, HEREBY CERTIFY THAT THIS PLAT IS CORRECT TO THE BEST OF MY KNOWLEDGE AND BELIEF AND SHOWS ALL THE INFORMATION REQUIRED BY LAW AND THE REGULATIONS ISSUED AND PRESCRIBED BY THE DIVISION OF ENVIRONMENTAL PROTECTION.

(SIGNED) Robert A. Kitzmiller  
 Professional Surveyor No. 635



WV. DEPT. OF ENVIRONMENTAL PROTECTION  
 OFFICE OF OIL AND GAS DIVISION  
 1356 HANSFORD STREET  
 CHARLESTON, WV. 25301



DATE FEBRUARY 11, 20 02  
 OPERATOR'S WELL NO. L-51  
 API WELL NO. \_\_\_\_\_  
47 - 061 - 01461C  
 STATE COUNTY PERMIT NO.

WELL TYPE: OIL  GAS  CBM  LIQUID INJECTION  WASTE DISPOSAL   
 IF "GAS", PRODUCTION  STORAGE  DEEP  SHALLOW   
 LOCATION: ELEVATION 1214' WATERSHED RANGE RUN OF WEST VIRGINIA FORK OF DUNKARD CREEK  
 DISTRICT BATTELLE COUNTY MONONGALIA  
 QUADRANGLE WADESTOWN NEAREST TOWN SAINT LEO  
 SURFACE OWNER JACK SHRIVER ET.AL. ACREAGE 87 3/4 AC.  
 OIL & GAS ROYALTY OWNER • See Note LEASE ACREAGE \_\_\_\_\_  
 LEASE NO. \_\_\_\_\_

PROPOSED WORK: DRILL  CONVERT  DRILL DEEPER  REDRILL  FRACTURE OR STIMULATE   
 PLUG OFF OLD FORMATION  PERFORATE NEW FORMATION   
 OTHER PHYSICAL CHANGE IN WELL (SPECIFY) EXISTING VENTILATION BOREHOLE BEING CONVERTED  
 PLUG AND ABANDON CLEAN OUT AND REPLUG  TO GOB WELL.

TARGET FORMATION PITTSBURGH ESTIMATED DEPTH 952'  
 WELL OPERATOR CNX GAS COMPANY LLC. (NORTH) DESIGNATED AGENT EDWIN L. MERRIFIELD  
 ADDRESS 1800 WASHINGTON ROAD ADDRESS 116 1/2 HUNSAKER STREET  
PITTSBURGH, PA. 15421-1421 FAIRMONT, WV. 26554

(FEDERAL No. 2 Mine CBM 392) 6-6

PRECISION SURVEYS FORM IV-6

MOND COUNTY PERMIT NO. 1461 C

State of West Virginia  
 Department of Environmental Protection  
 Office of Oil and Gas

Well Operator's Report of Well Work

Farm Name: Shriver, Jack, Etal Operator Well No.: L-51

LOCATION: Elevation: 1214 Quadrangle: Wadestown

District: Battelle County: Monongalia  
 Latitude: 14441.6 Feet South of 39 Deg. 40 Min. 00 Sec.  
 Longitude: 2119.7 Feet West of 80 Deg. 20 Min. 00 Sec.

Company: CNX Gas Company LLC (North)

	Casing & Tubing	Used In Drilling	Left In Well	Cement Fill Up Cu. Ft.
<b>Address:</b> 1800 Washington Road Pittsburgh, PA 15241				
<b>Agent:</b> Edwin Merrifield				
<b>Inspector:</b> Steve Mossor				
<b>Date Permit Issued:</b> 12/03/2002				
<b>Date Well Work Commenced:</b> Existing Borehole				
<b>Date Well Work Completed:</b> Converted to well				
<b>Verbal Plugging:</b>				
<b>Date Permission granted on:</b>				
<b>Rotary Cable Rig</b>				
<b>Total Depth (feet):</b> 952				
<b>Fresh Water Depth (ft.):</b>				
<b>Salt Water Depth (ft.):</b>				
<b>Is coal being mined in area (N/Y)?</b> No				
<b>Coal Depths (ft.):</b> 942				

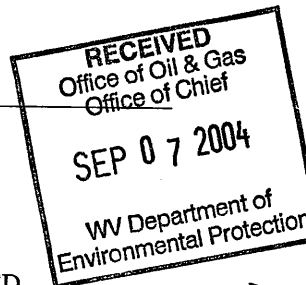
OPEN FLOW DATA

Producing formation Pittsburgh Coal Seam Pay zone depth (ft) 942  
 Gas: Initial open flow 105 MCF/d Oil: Initial open flow 0 Bbl/d  
 Final open flow 105 MCF/d Final open flow 0 Bbl/d  
 Time of open flow between initial and final tests 0 Hours  
 Static rock pressure 1 psig (surface pressure) after - Hours

Second producing formation None Pay zone depth (ft) \_\_\_\_\_  
 Gas: Initial open flow \_\_\_\_\_ MCF/d Oil: Initial open flow \_\_\_\_\_ Bbl/d  
 Final open flow \_\_\_\_\_ MCF/d Final open flow \_\_\_\_\_ Bbl/d  
 Time of open flow between initial and final tests \_\_\_\_\_ Hours  
 Static rock pressure \_\_\_\_\_ psig (surface pressure) after \_\_\_\_\_ Hours

NOTE: ON BACK OF THIS FORM PUT THE FOLLOWING: 1). DETAILS OF PERFORATED INTERVALS, FRACTURING OR STIMULATING, PHYSICAL CHANGE, ETC. 2). THE WELL LOG WHICH IS A SYSTEMATIC DETAILED GEOLOGICAL RECORD OF ALL FORMATIONS, INCLUDING COAL ENCOUNTERED BY THE WELLBORE.

Signed: Joseph P. Aman  
 By: Joseph P. Aman  
 Date: September 2, 2004



MONO 1461

OCT 15 2004