

WW-7
8-30-06



West Virginia Department of Environmental Protection
Office of Oil and Gas

WELL LOCATION FORM: GPS

API: 47-061-01350-C WELL NO.: 7B2

FARM NAME: Noumenon

RESPONSIBLE PARTY NAME: Lonnie Atkins

COUNTY: Monongalia DISTRICT: Clay

QUADRANGLE: Blacksville

SURFACE OWNER: Noumenon and Mark V Eddy

ROYALTY OWNER: Noumenon and Mark V Eddy

UTM GPS NORTHING: 4391997.53

UTM GPS EASTING: 569400.72 GPS ELEVATION: 412

The Responsible Party named above has chosen to submit GPS coordinates in lieu of preparing a new well location plat for a plugging permit or assigned API number on the above well. The Office of Oil and Gas will not accept GPS coordinates that do not meet the following requirements:

1. Datum: NAD 1983, Zone: 17 North, Coordinate Units: meters, Altitude: height above mean sea level (MSL) – meters.
2. Accuracy to Datum – 3.05 meters
3. Data Collection Method:

Survey grade GPS : Post Processed Differential
Real-Time Differential

Mapping Grade GPS : Post Processed Differential
Real-Time Differential

4. Letter size copy of the topography map showing the well location.

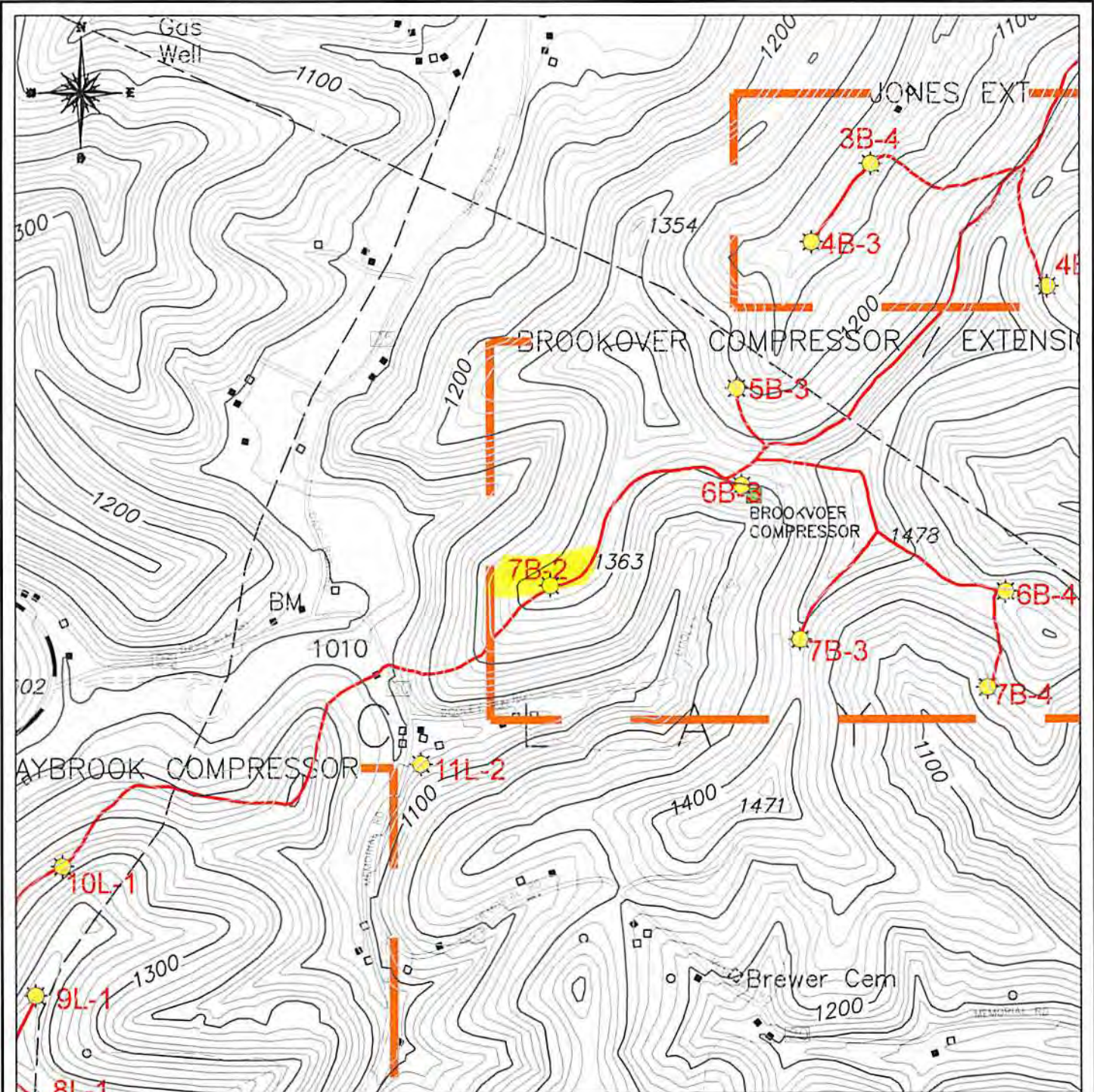
I the undersigned, hereby certify this data is correct to the best of my knowledge and belief and shows all the information required by law and the regulations issued and prescribed by the Office of Oil and Gas.

Signature

President
Title


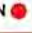
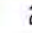
8/25/2014
Date


RECEIVED
Office of Oil and Gas
SEP 16 2014
WV Department of
Environmental Protection



LEGEND

GAS WELL
 UTM ZONE 17 S
 EASTING: 569,400.72
 NORTHING: 4,391,997.53
 ELEVATION: 412 M

SURVEYED CBM WELL LOCATION 
 NON-SURVEYED CBM WELL LOCATION 
 GAS LINE 
 0 FT 1000 FT 2000 FT



LOCATION MAP

NOUMENON CORPORATION
 2461 MASON DIXON HIGHWAY
 CORE, WV 26541
API WELL NO. - 47-061-1350-C
OPERATOR'S WELL NO. - 7B2
 CLAY DISTRICT - MONONGALIA COUNTY, WV
 15-MINUTE SERIES - 20' CONTOUR INTERVAL
 BLACKVILLE, WV TPO QUAD

RECEIVED
 Office of Oil and Gas
 SEP 16
 WV Department of Environmental Protection