

WW-7
8-30-06



West Virginia Department of Environmental Protection
Office of Oil and Gas

WELL LOCATION FORM: GPS

API: 47-061-01344-C WELL NO.: 3-9

FARM NAME: CONSOL Energy Inc

RESPONSIBLE PARTY NAME: Lonnie Atkins

COUNTY: Monongalia DISTRICT: Clay

QUADRANGLE: Blacksville

SURFACE OWNER: WV DNR Public Land Corporation

ROYALTY OWNER: WV DNR Public Land Corporation

UTM GPS NORTHING: 4393343.76

UTM GPS EASTING: 575025.52 GPS ELEVATION: 336 (1102')

The Responsible Party named above has chosen to submit GPS coordinates in lieu of preparing a new well location plat for a plugging permit or assigned API number on the above well. The Office of Oil and Gas will not accept GPS coordinates that do not meet the following requirements:

- Datum: NAD 1983, Zone: 17 North, Coordinate Units: meters, Altitude: height above mean sea level (MSL) – meters.
- Accuracy to Datum – 3.05 meters
- Data Collection Method:

Survey grade GPS : Post Processed Differential
 Real-Time Differential
 Mapping Grade GPS : Post Processed Differential
 Real-Time Differential

RECEIVED
Office of Oil and Gas

SEP 16 2014

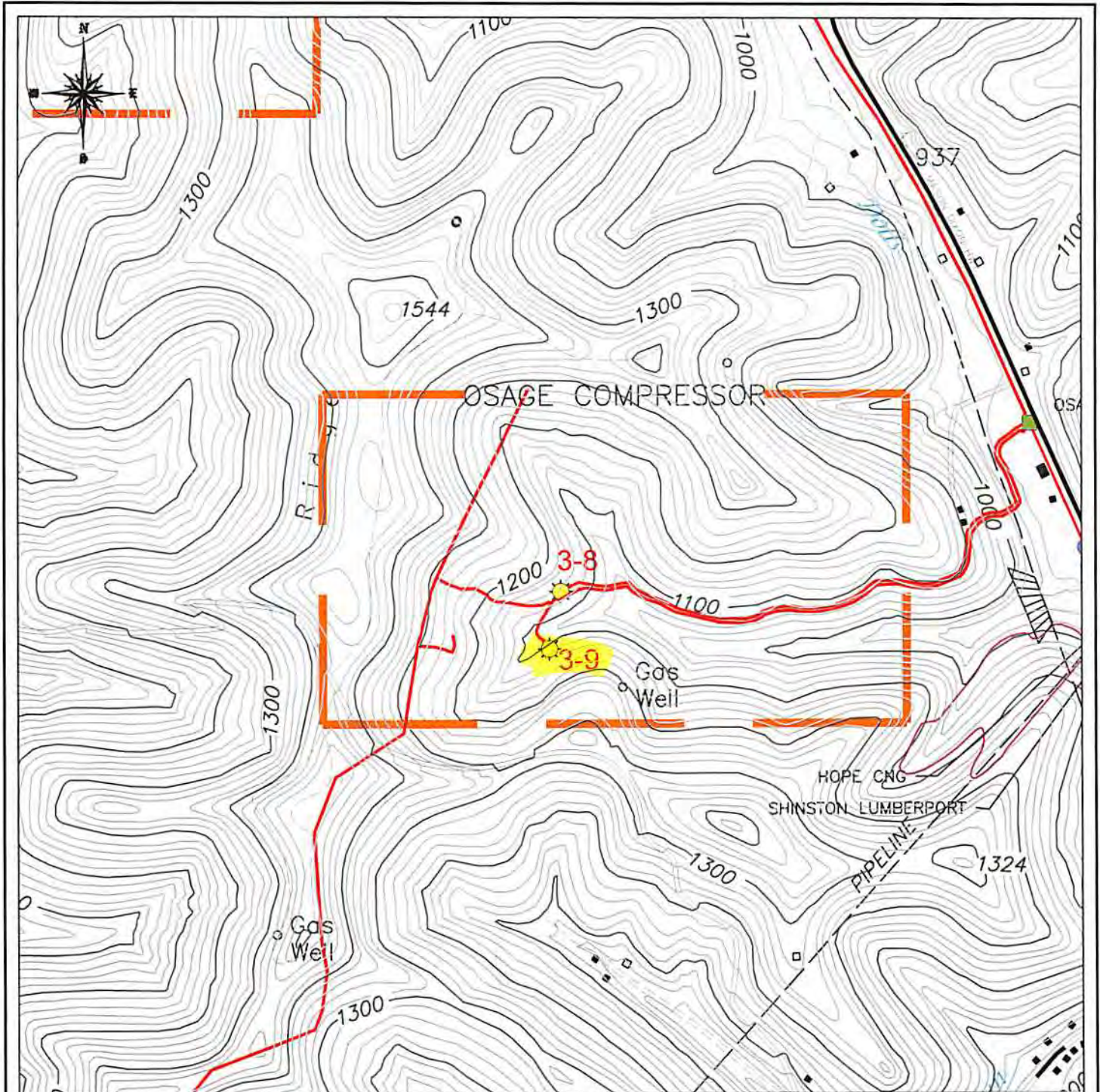
WV Department of
Environmental Protection

- Letter size copy of the topography map showing the well location.

I the undersigned, hereby certify this data is correct to the best of my knowledge and belief and shows all the information required by law and the regulations issued and prescribed by the Office of Oil and Gas.




Signature President Title

8/25/2014
 Date



LEGEND

GAS WELL
 UTM ZONE 17 S
 EASTING: 575,025.52
 NORTHING: 4,393,343.76
 ELEVATION: 336 M

SURVEYED CBM WELL LOCATION 
 NON-SURVEYED CBM WELL LOCATION 
 GAS LINE 

0 FT 1000 FT 2000 FT



LOCATION MAP

RECEIVED
 NOUMENON CORPORATION
 Office of Oil and Gas
 2461 MASON DIXON HIGHWAY
 CORE, WV 26541

SEP 18 2014
 API WELL NO. - 47-061-1344-C

OPERATOR'S WELL NO. - 3-9

WV Department of Environmental Protection
 CLAY DISTRICT - MONONGALIA COUNTY, WV
 7.5-MINUTE SERIES - 20' CONTOUR INTERVAL
 BLACKSVILLE, WV TOPO QUAD