

WW-7
8-30-06



West Virginia Department of Environmental Protection
Office of Oil and Gas
WELL LOCATION FORM: GPS

API: 47-061-01333-C WELL NO.: 3-26

FARM NAME: SYLVESTER, JOHN

RESPONSIBLE PARTY NAME: Lonnie Atkins

COUNTY: Monongalia DISTRICT: Clay

QUADRANGLE: Blacksville

SURFACE OWNER: DIEFFENBAUCH & HRITZ

ROYALTY OWNER: MYERS, JUNE C. CODY, DOROTHY C. WRIGHT, ROBERT E., AGENT

UTM GPS NORTHING: 4391704.82

UTM GPS EASTING: 0571604.36 GPS ELEVATION: 304M (1018')

The Responsible Party named above has chosen to submit GPS coordinates in lieu of preparing a new well location plat for a plugging permit or assigned API number on the above well. The Office of Oil and Gas will not accept GPS coordinates that do not meet the following requirements:

1. Datum: NAD 1983, Zone: 17 North, Coordinate Units: meters, Altitude: height above mean sea level (MSL) – meters.
2. Accuracy to Datum – 3.05 meters
3. Data Collection Method:

Survey grade GPS : Post Processed Differential

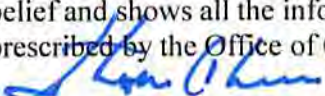
Real-Time Differential

Mapping Grade GPS : Post Processed Differential

Real-Time Differential

4. Letter size copy of the topography map showing the well location.

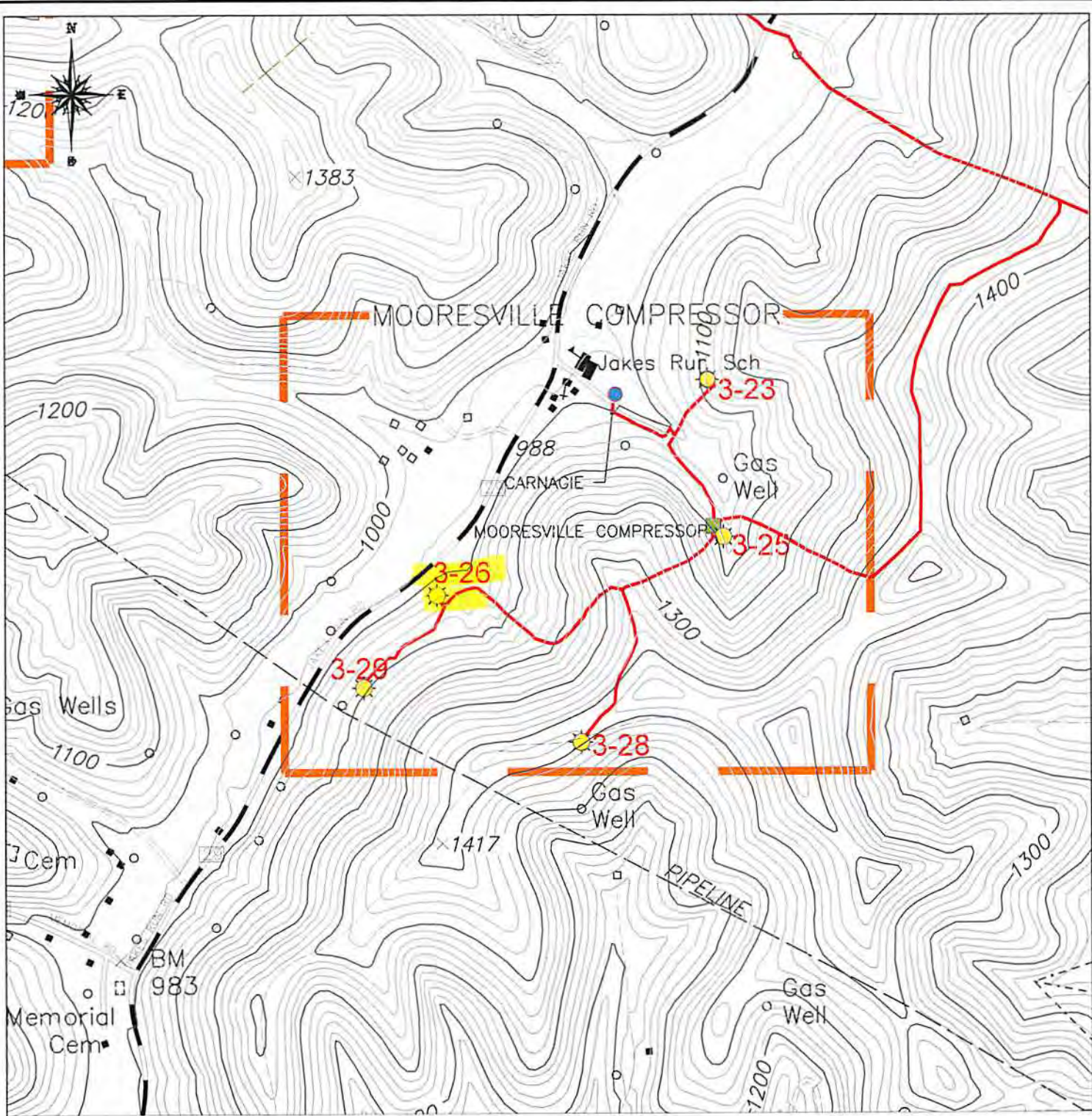
I the undersigned, hereby certify this data is correct to the best of my knowledge and belief and shows all the information required by law and the regulations issued and prescribed by the Office of Oil and Gas.


Signature

President
Title




11/6/2014
Date

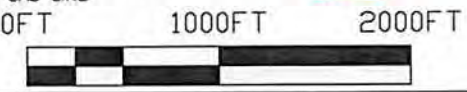
Received
Office of Oil & Gas
DEC 29 2014



LEGEND

GAS WELL
 UTM ZONE 17S
 EASTING: 571604.36
 NORTHING: 4,391,704.82
 ELEVATION: 304 M

SURVEYED CBM WELL LOCATION 
 NON-SURVEYED CBM WELL LOCATION 
 GAS LINE 



LOCATION MAP

NOUMENON CORPORATION
 2461 MASON DIXON HIGHWAY
 CORE, WV 26541

API WELL NO. - 47-061-1333C
OPERATOR'S WELL NO. - 3-26

CLAY DISTRICT - MONONGALIA COUNTY, WV
 7.5 MINUTE SERIES - 20' CONTOUR INTERVAL
 BLACKSVILLE, WV TOPO QUAD

Received
 Office of Oil & Gas
 DEC 29 2014