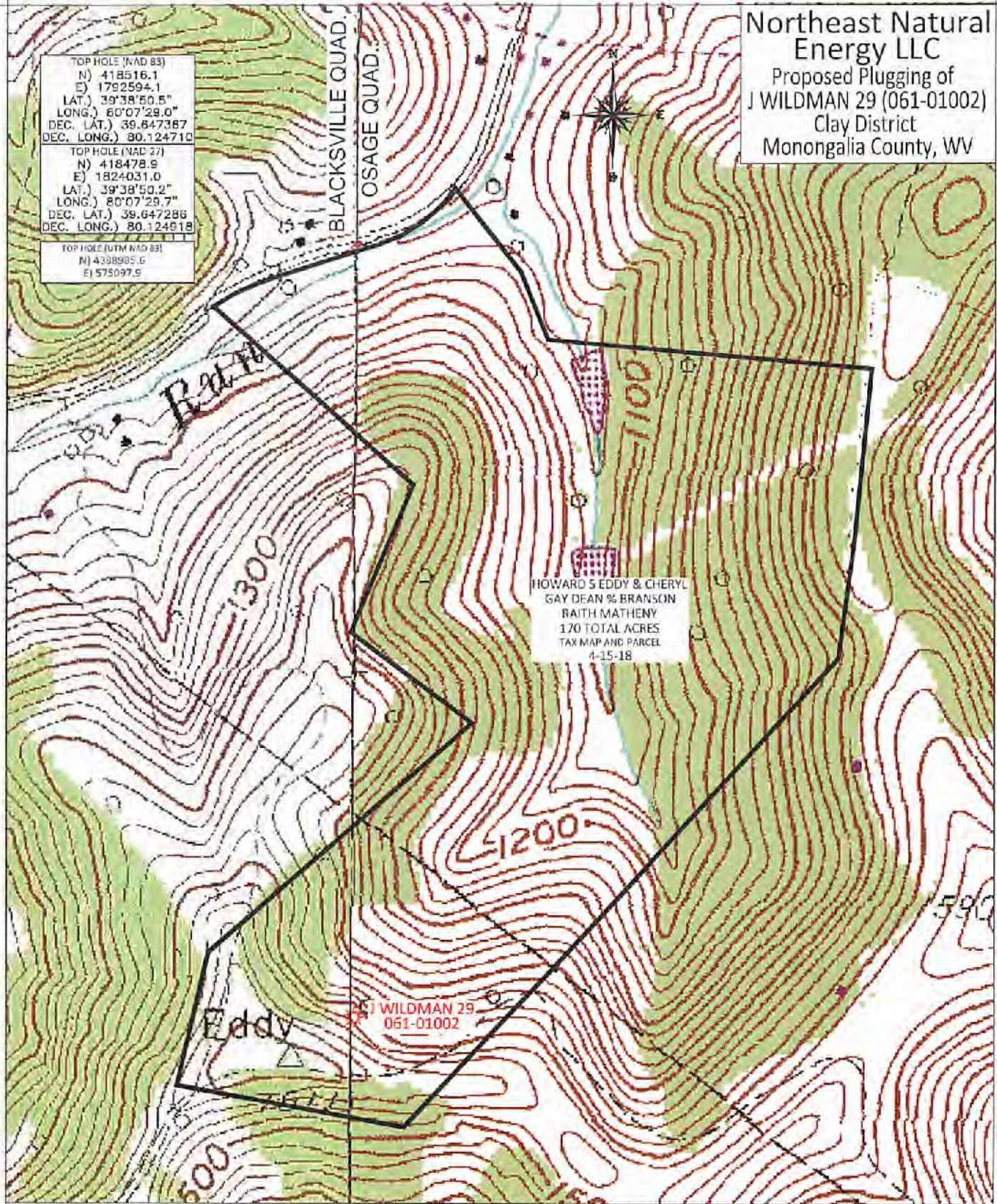


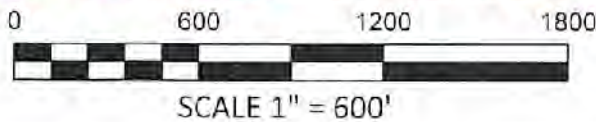
Northeast Natural Energy LLC

Proposed Plugging of
J WILDMAN 29 (061-01002)
Clay District
Monongalia County, WV

TOP HOLE (NAD 83)
N) 418516.1
E) 1792594.1
LAT.) 39°38'50.5"
LONG.) 80°07'29.0"
DEC. LAT.) 39.647387
DEC. LONG.) 80.124710
TOP HOLE (NAD 27)
N) 418478.9
E) 1824031.0
LAT.) 39°38'50.2"
LONG.) 80°07'29.7"
DEC. LAT.) 39.647286
DEC. LONG.) 80.124818
TOP HOLE (UTM NAD 83)
N) 4308985.6
E) 575097.9



BOORD, BENCHEK and ASSOC., INC.
 Engineering, Surveying, Construction,
 and Mining Services
 Southpointe, PA 15317 Phone: 724-746-1055



APRIL 18, 2022