

RECEIVED
Office of Oil and Gas

MAY 20 2016

WV Department of
Environmental ProtectionWW-7
8-30-06West Virginia Department of Environmental Protection
Office of Oil and Gas

WELL LOCATION FORM: GPS

API: 47-061-00785 WELL NO.: 1

FARM NAME: D.R. Wright

RESPONSIBLE PARTY NAME: Noumenon Corporation

COUNTY: Monongalia DISTRICT: Clay

QUADRANGLE: Blacksville, WV

SURFACE OWNER: Mitchell E. and Terry Jo Mayle

ROYALTY OWNER: Not Producing


UTM GPS NORTHING: 435395.520 = 4394080.895 N

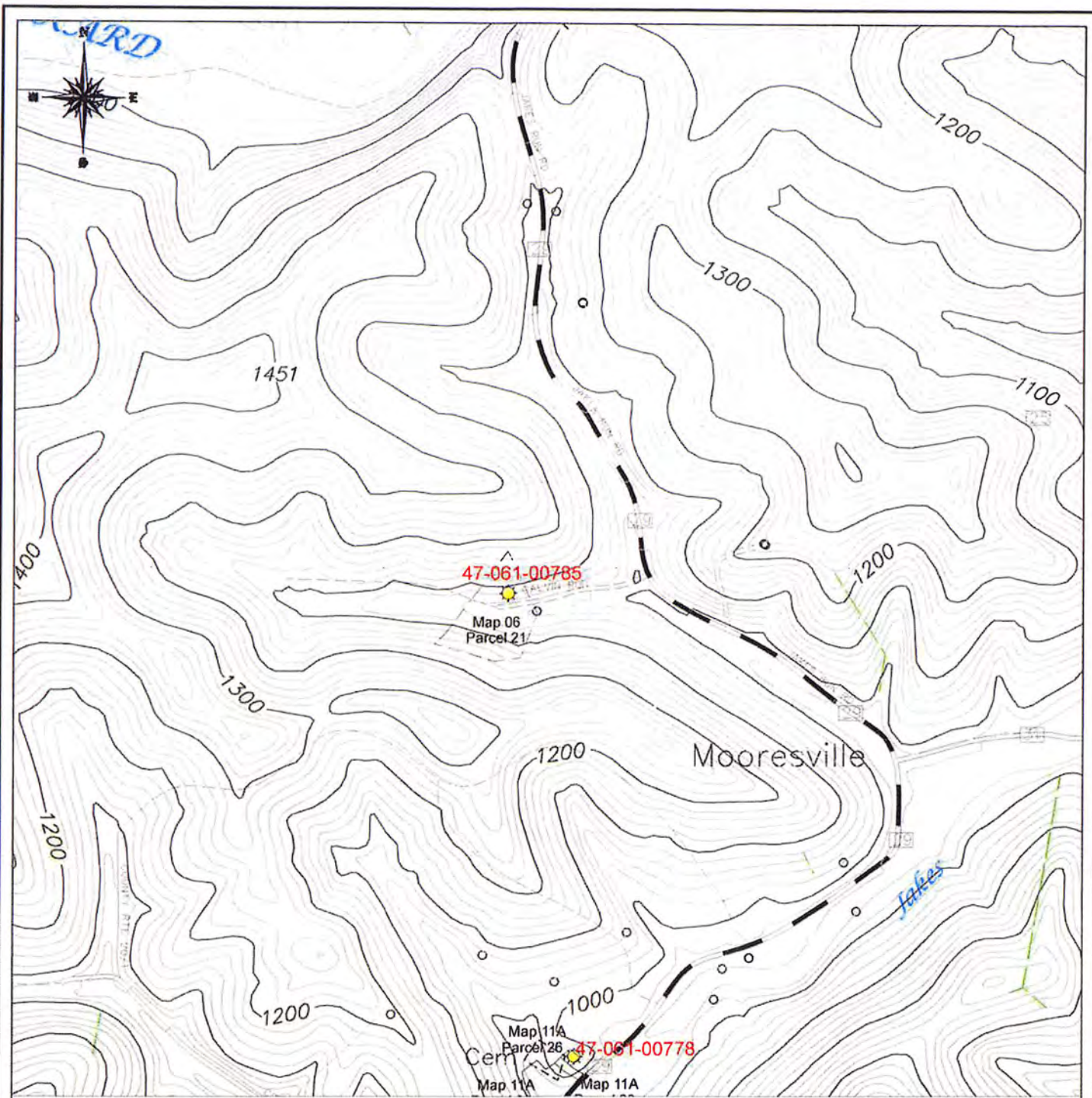
UTM GPS EASTING: 1783274.162 = 572172.438 E GPS ELEVATION: 1086.33

The Responsible Party named above has chosen to submit GPS coordinates in lieu of preparing a new well location plat for a plugging permit or assigned API number on the above well. The Office of Oil and Gas will not accept GPS coordinates that do not meet the following requirements:

- Datum: NAD 1983, Zone: 17 North, Coordinate Units: meters, Altitude: height above mean sea level (MSL) – meters.
- Accuracy to Datum – 3.05 meters
- Data Collection Method:
Survey grade GPS : Post Processed Differential
Real-Time Differential
Mapping Grade GPS : Post Processed Differential
Real-Time Differential

4. **Letter size copy of the topography map showing the well location.**
I the undersigned, hereby certify this data is correct to the best of my knowledge and belief and shows all the information required by law and the regulations issued and prescribed by the Office of Oil and Gas.

 President 5/20/2016
Signature Title Date



LEGEND

GAS WELL
 Northing: 435395.520
 Easting: 1783274.162
 ELEVATION: 1086.33'

SURVEYED WELL LOCATION

PROPERTY LINE

0 FT 1000 FT 2000 FT



RECEIVED
 Office of Oil and Gas

MAY 20 2016

WV Department of
 Environmental Protection



LOCATION MAP

NOUMENON CORPORATION
 2461 MASON DIXON HIGHWAY, CORE, WV 26541

API WELL NO. - **47-061-00785**
 OPERATOR'S WELL NO. - **1 - DR WRIGHT**

CLAY DISTRICT - MONONGALIA COUNTY, WV
 7.5 MINUTE SERIES - 20' CONTOUR INTERVAL
 BLACKSVILLE, WV TOPO QUAD