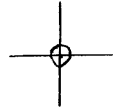


LATITUDE 39° 40' 00"

00,01,08 LONGITUDE



7'5 OGIS topo location

7.5' loc 2.15S 15' loc _____
' 0.62W (calc.) _____

Company _____

Farm _____

Quad BLACKSVILLE 7 1/2'

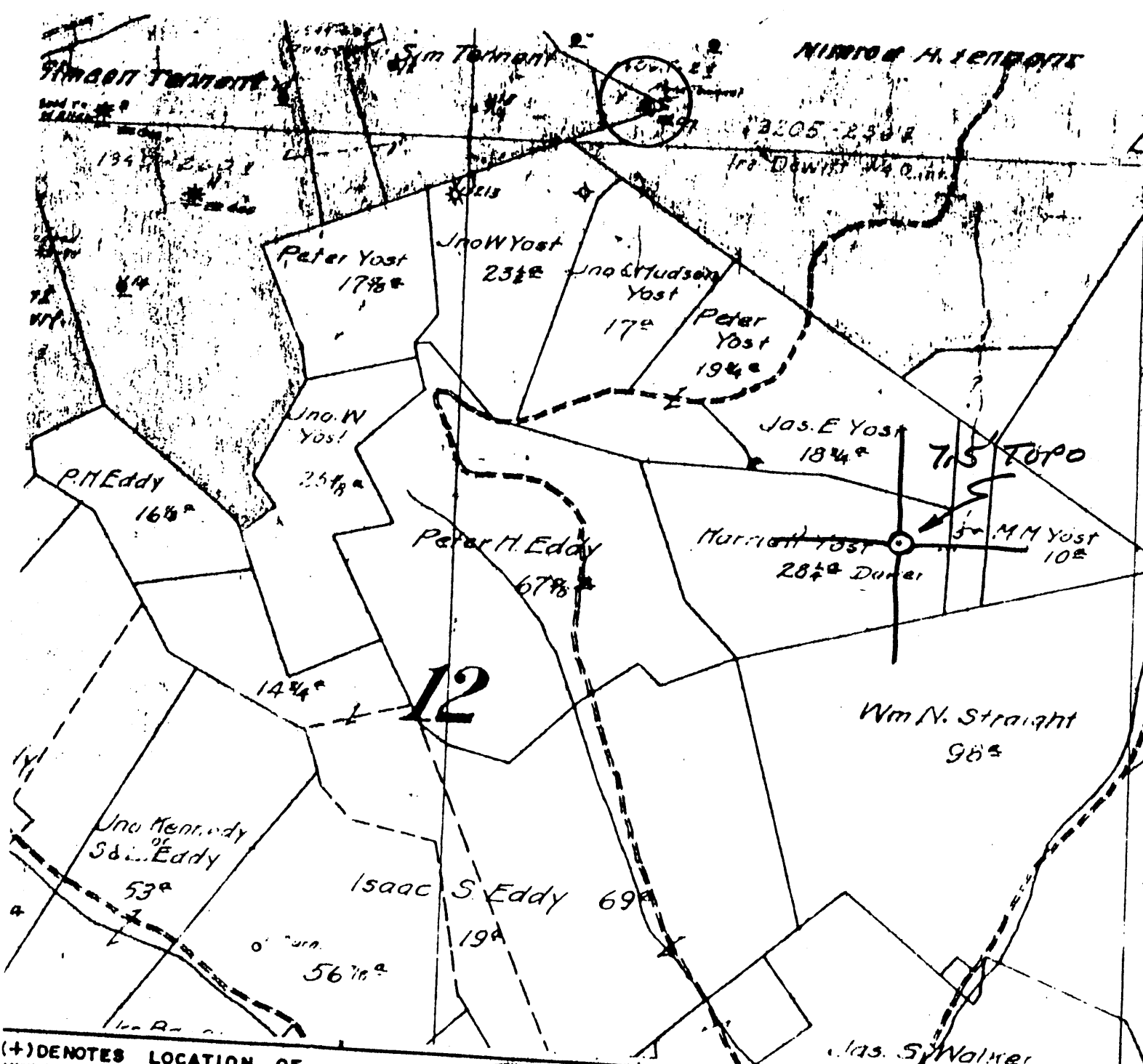
County MONONGALIA

District CLAY

elev 1080± (TOPO)

WELL LOCATION MAP

File No. OGI - 0518



(+) DENOTES LOCATION OF WELL ON UNITED STATES TOPOGRAPHIC MAPS

FORM IV-6 (8-78)

N62E N12 E25



DATE 1-25-1979
 OPERATOR'S WELL NO. 1979
 API WELL NO. 47-061-0518
 STATE COUNTY PERMIT

STATE OF WEST VIRGINIA DEPARTMENT OF MINES OIL AND GAS DIVISION

WELL TYPE: OIL GAS LIQUID INJECTION WASTE DISPOSAL
 (IF "GAS", PRODUCTION STORAGE DEEP SHALLOW
 LOCATION: ELEVATION WATER SHED JAMES RUN
 DISTRICT CLAY COUNTY MONONGALIA
 QUADRANGLE BLACKSVILLE 7.5'

SURFACE OWNER _____
 OIL & GAS ROYALTY OWNER _____ ACREASE _____
 LEASE NO. _____ LEASE ACREASE _____

PROPOSED WORK: DRILL CONVERT DRILL DEEPER REDRILL FRACTURE OR STIMULATE PLUS OFF OLD FORMATION PERFORATE NEW FORMATION OTHER PHYSICAL CHANGE IN WELL (SPECIFY) _____

PLUG AND ABANDON CLEAN OUT AND REPLUG
 TARGET FORMATION _____ ESTIMATED DEPTH _____
 WELL OPERATOR Pennzoil Company DESIGNATED AGENT James A. Crews
 ADDRESS P. O. Box 1588 ADDRESS P. O. Box 1588
Parkersburg, WV 26101 Parkersburg, WV 26101

Well No. 1 *W. D. Alpha Tennant* Farm Acres
 Lease No. *Clady* Township *Monongalia* County *W. Va.* State
 Contractor *S. P. Blasing Out Tool* Contractor
 Drilling Commenced *Apr. 4, 1925* Drilling Completed *June 13, 1925*
N. 13 S. E. 25 W.

Rock Formation	Top	Bottom	Steel Line Measurement	Remarks
<i>Pittsburgh Coal</i>	<i>506</i>			
<i>Big Injun Sand</i>	<i>1815</i>	<i>1965</i>		
<i>Started to Drill Deeper</i>			<i>1900</i>	
<i>Soft Sand</i>	<i>2288</i>	<i>2298</i>		
<i>Fifth Foot Sand</i>	<i>2380</i>	<i>2400</i>		
<i>Third Foot Sand</i>	<i>2461</i>	<i>2472</i>		
<i>Show Gas</i>	<i>2628</i>	<i>2683</i>		<i>5/10 W-1/2"</i>
<i>Fourth Sand</i>	<i>2768</i>	<i>2777</i>		
<i>4 1/2 x 4" Liner</i>			<i>2767</i>	
<i>Fifth Sand</i>	<i>2900</i>	<i>2915</i>	<i>2900</i>	
<i>Ballard Sand</i>	<i>2942</i>	<i>2944</i>	<i>2942</i>	
<i>Gas</i>	<i>2942</i>			
<i>Total Depth</i>		<i>3183</i>	<i>3183</i>	<i>3/10 W-1"</i>

Refer to Book 1 for first drilling

CASING RECORD AS TALLIED. NOT STEEL LINE MEASUREMENT

Size	Put in Well		Pulled Out		Left in Well		Shot Date	Amount	Sand Result
	Feet	In.	Feet	In.	Feet	In.			
<i>8 1/4</i>	<i>842</i>						<i>6-20-25</i>	<i>20 qts.</i>	<i>Injun</i>
<i>6 5/8</i>	<i>1545</i>								
<i>5 7/16</i>	<i>1815</i>								
<i>4 1/2 x 4</i>	<i>874</i>								

Packer Size

Depth Set

Production First 24 Hours _____ Bbls. Gas Test *3/10 W-1"*
 Approved by *J. W. Weaver* Superintendent

47-061-0518