

WW-7
8-30-06



West Virginia Department of Environmental Protection
Office of Oil and Gas
WELL LOCATION FORM: GPS

API: 47-061-00416 WELL NO.: WV 651836 (D. R. Wright #635)

FARM NAME: D. R. Wright

RESPONSIBLE PARTY NAME: EQT Production Company

COUNTY: Monongalia DISTRICT: Clay

QUADRANGLE: Blacksville 7.5'

SURFACE OWNER: William D. Statler, Sr.

ROYALTY OWNER: Shuman, Inc. and KKS Minerals, LLC

UTM GPS NORTHING: 4391382

UTM GPS EASTING: 573344 GPS ELEVATION: 393 m (1290 ft)

The Responsible Party named above has chosen to submit GPS coordinates in lieu of preparing a new well location plat for a plugging permit or assigned API number on the above well. The Office of Oil and Gas will not accept GPS coordinates that do not meet the following requirements:

1. Datum: NAD 1983, Zone: 17 North, Coordinate Units: meters, Altitude: height above mean sea level (MSL) – meters.
2. Accuracy to Datum – 3.05 meters
3. Data Collection Method:

Survey grade GPS _____ : Post Processed Differential _____
Real-Time Differential _____

Mapping Grade GPS X : Post Processed Differential X
Real-Time Differential _____

4. Letter size copy of the topography map showing the well location.

I the undersigned, hereby certify this data is correct to the best of my knowledge and belief and shows all the information required by law and the regulations issued and prescribed by the Office of Oil and Gas.

RECEIVED
Office of Oil and Gas

JUN 12 2019

WV Department of
Environmental Protection


Signature

PS # 2180
Title

5/28/2019
Date

Topo Quad: Blacksville 7.5'

Scale: 1" = 2000'

47-061-00416P

County: Monongalia

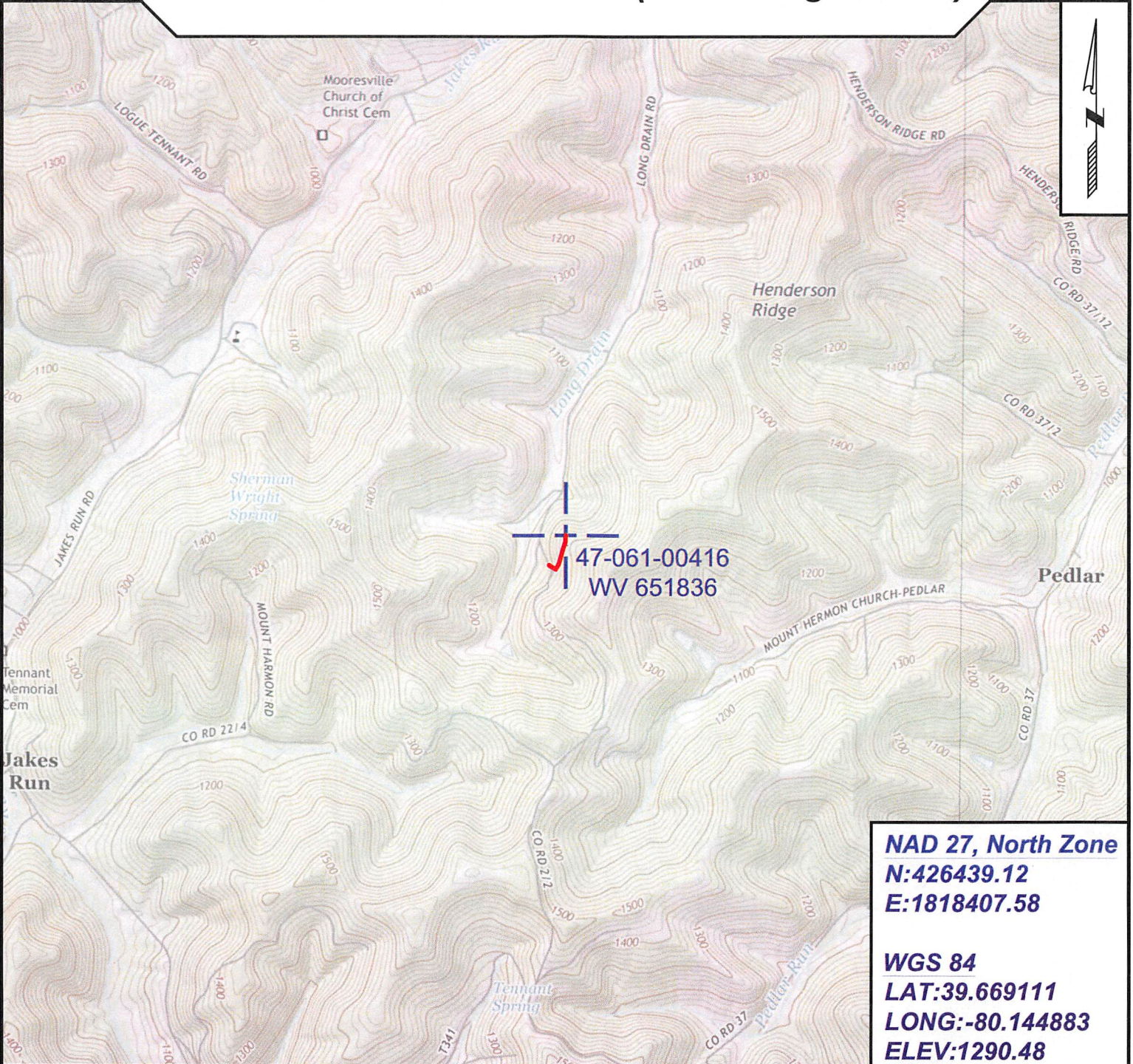
Date: May 16, 2019

District: Clay

Project No: 72-20-00-08

47-061-00416 WV 651836 (D. R. Wright #635)

Topo



NAD 27, North Zone
N:426439.12
E:1818407.58

WGS 84
LAT:39.669111
LONG:-80.144883
ELEV:1290.48



SURVEYING AND MAPPING SERVICES PERFORMED BY:
ALLEGHENY SURVEYS, INC.
 1-800-482-8606
 237 Birch River Road
 Birch River, WV 26610
 PH: (304) 649-8606
 FAX: (304) 649-8608

PREPARED FOR:
EQT Production Company
 RECEIVED
 Office of Oil and Gas
 JUN 12 2019
 2400 Ansys Drive, Suite 200
 Canonsburg, PA 15317
 WV Department of Environmental Protection

Topo Quad: Blacks ville 7.5'

Scale: 1" = 200'

47-061-00416P

County: Monongalia

Date: May 16, 2019

District: Clay

Project No: 72-20-00-08

47-061-00416 WV 651836 (D. R. Wright #635)

Topo

Pit Location Map



22

47-061-00416
WV 651836



Existing Well
Access Road



22

RECEIVED
Office of Oil and Gas

JUN 12 2019

WV Department of
Environmental Protection

NAD 27, North Zone
N:426439.12
E:1818407.58

WGS 84
LAT:39.669111
LONG:-80.144883
ELEV:1290.48

LEGEND



Proposed Pit Location



SURVEYING AND MAPPING SERVICES PERFORMED BY:

ALLEGHENY SURVEYS, INC.

1-800-482-8606
237 Birch River Road
Birch River, WV 26610
PH: (304) 649-8606
FAX: (304) 649-8608

PREPARED FOR:

EQT Production Company

2400 Ansys Drive, Suite 200
Canonsburg, PA 15317

Topo Quad: Blacksville 7.5'

Scale: 1" = 500'

47-061-00416 P

County: Monongalia

Date: May 16, 2019

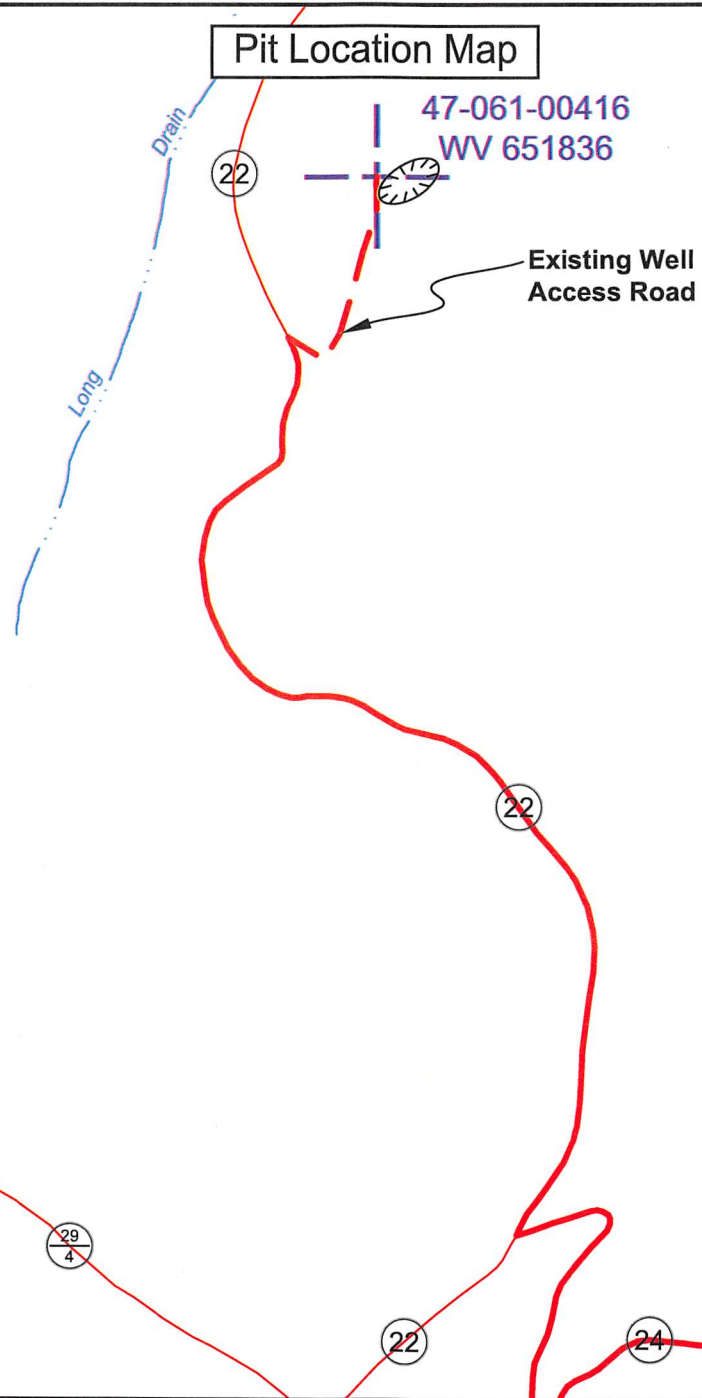
District: Clay

Project No: 72-20-00-08

Highway

47-061-00416 WV 651836 (D. R. Wright #635)

Pit Location Map



RECEIVED
Office of Oil and Gas

JUN 12 2019

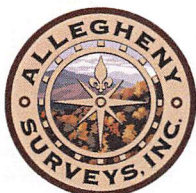
WV Department of
Environmental Protection

NAD 27, North Zone
N:426439.12
E:1818407.58

WGS 84
LAT:39.669111
LONG:-80.144883
ELEV:1290.48

LEGEND

 Proposed Pit Location



SURVEYING AND MAPPING SERVICES PERFORMED BY:

ALLEGHENY SURVEYS, INC.

1-800-482-8606
237 Birch River Road
Birch River, WV 26610
PH: (304) 649-8606
FAX: (304) 649-8608

PREPARED FOR:

EQT Production Company

2400 Ansys Drive, Suite 200
Canonsburg, PA 15317