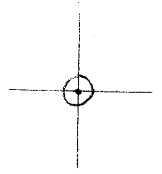


LATITUDE 39° 40' 00"



LONGITUDE 80° 22' 30"

7.5 OGIS topo location

7.5' loc 0.435 15' loc _____
 0.44~ (calc.) _____

Company _____

Farm _____

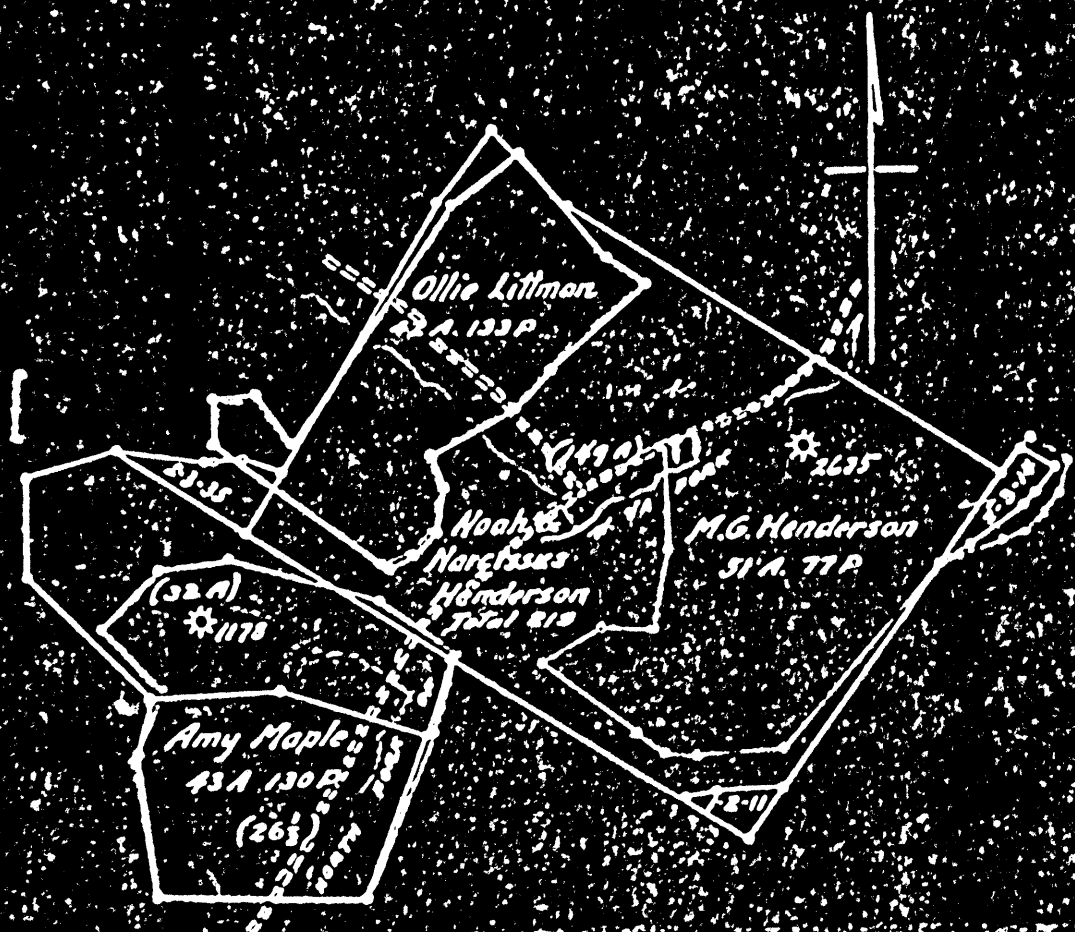
Quad HUNDRED 7 1/2'

County MONONGALIA

District BOTTLE

WELL LOCATION MAP

File No. 061-0407



PLOT

OF NOAH & NARCISSUS HENDERSON FARM,
 BATTELLE DISTRICT, MONONGALIA COUNTY, W. VA.
 THE MANUFACTURERS LIGHT & HEAT COMPANY
 Scale 1" = 800' April 27, 1931
 WPA No 1178 on Amy Maple
 WPA No 2635 on M.G. Henderson

The Manufacturers Light and Heat Co.

Farmers Bank Building, Pittsburgh, Penna.

Dist. No. _____

Receipt of Well No. **#178** on **Roach Henderson** Farm
Hundred Field **Battelle** District **Warrington** County **W. Va.** State
 Rig commenced **February 7** 1910. Completed **February 12** 1910.
 Drilling commenced **February 16** 1910. Completed **April 14** 1910.
 Cost per foot **\$ 1.30** Contractor **Cookin Brothers** Address **Hundred**
 Drillers' names **Eli Miller. J. S. Zimmerman. Warren Rounder**

BOILER			ENGINE			RIG			
N. P.	No.	Name of Maker	N. P.	No.	Name of Maker	No.	Old	Height	Name of Builder
								view	82 S. Ferris

CONDUCTOR AND CASING USED IN DRILLING

Conductor	13 inch	10 inch	8 inch	6 inch	6 inch	6 inch	6 3/4 inch	6 inch	4 inch	
12	—	270	1515	2274					3349	

CONDUCTOR AND CASING LEFT IN WELL

Conductor	13 inch	10 inch	8 inch	6 inch	6 inch	6 inch	6 3/4 inch	6 inch	4 inch	3 inch
12		270	852	2274					3349	

OIL WELL

GAS WELL

When Shot	Size of Torpedo	Total Day's Production	Tubing	Rods	Tanks	Size of Packer	Depth Set	Packed With	1st Minute's Pressure	Rock Pressure
						6 1/2 x 4"	2024	Green Backer	35"	960

FORMATION

Top Bottom Thickness

REMARKS

Maple town coal	910		
Pittsburgh coal	1005		
Big Shankard sand	1515	1590	75
Gas sand	1634	1757	123
1st Sandt sand	1822	1862	40
2nd salt "	1950	2020	70
Red rock	2195		
Big lime	2220	2303	83
Big Injun sand	2503	2498	195
50 foot sand	2950	2990	40
30 " "	3000	3034	34
Stray "	3038	3058	
Gas	3049		
Gordin "	3071	3097	26
Fourth "	3130	3153	23
Sand	3225	3230	5
Total Depth		3308	

Pressure of well taken
in 4 inch tubing

-MON-407

Copied,
Midway Office
Page 176
April 26, 1910.