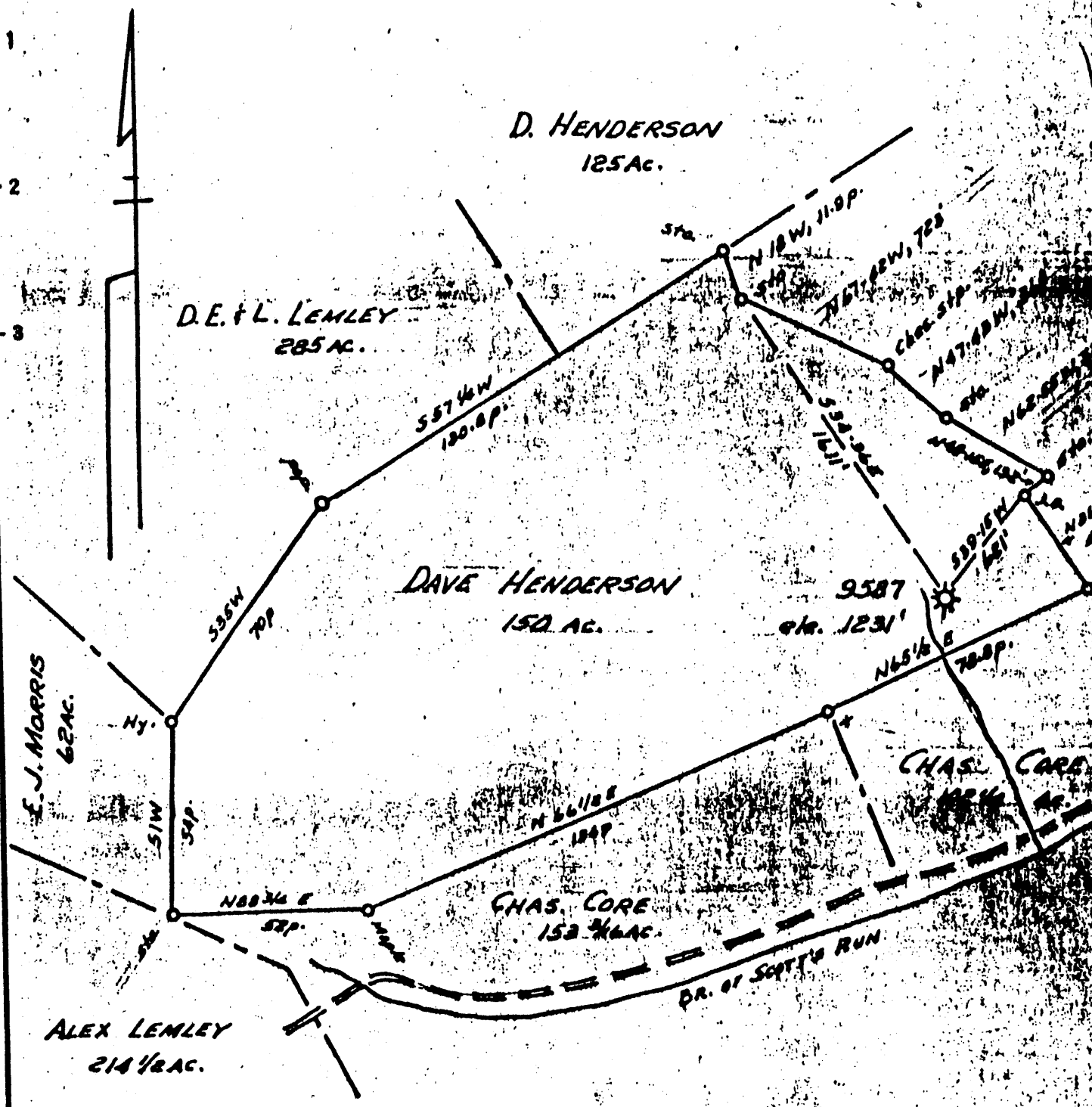


M.10.  
C.05.



- New Location...
- Drill Deeper.....
- Abandonment.....

MAP SH. 131 N 14, E 30, F. B. 1049 p. 23 24

Company	HOPE NATURAL GAS CO.		
Address	CLARKSBURG, W. VA.		
Farm	DAVE HENDERSON		
Tract	Acres	Lease No.	61887
Well (Farm) No.		Serial No.	9587
Elevation (Spirit Level)	1231'		
Quadrangle	BLACKSVILLE		
County	MONONGALIA	District	CASS
Engineer	Guy H. Bradley		
Engineer's Registration No.	2425		
File No.		Drawing No.	
Date		Scale	1" = 400'

STATE OF WEST VIRGINIA  
DEPARTMENT OF MINES  
OIL AND GAS DIVISION  
CHARLESTON

WELL LOCATION MAP  
FILE NO. 061-0405

+ Denotes location of well on United States Topographic Maps, scale 1 to 62,500, latitude and longitude lines being represented by border lines as shown.  
- Denotes one inch spaces on border line of original tracing.

GAS DEPT.  
WELL RECORD

Well No. 244

Drilled on Dave Henderson Farm of 150 Acres situate in  
Dist. of West Monongalia County—State W. Va. Lease No. 1075

RIG

WELL

Location Made

Commenced Drilling June 1, 1916

Completed " Sept. 30, 1916

Contractor S. C. Weaver

Drillers Walt. South

5/8"

FORMATION	TOP	BOTTOM	REMARKS	PRESSURE AND VOLUME IN 24 HOURS		
Conductor	0	14		1 Minute	15	Lbs.
Spletown Coal				2 "	25	"
Pittsburgh Coal	545	550		8 "	31	"
Little Denard	1025	1035		4 "	38	"
Gas Sand	1304	1350	Gas 1315 (Very Light)		46	"
Light Salt Sand	1376	1445	Water 1390	10 "		"
Hard Salt Sand	1458	1554		15 "		"
Maxton Sand				80 "		"
Little Lime				1 Hour		"
Conell Cave				24 "		"
Little Lime	1756	1810	Break 1825-33 Rock			"
1st Injun	1810	1965	1st pay 1915	Size of Tubing	3	Inch
2nd Injun			2nd " 1927	Size of Casing		"
Merica				Vol. by Water		
Antz Sand	2376	2412		" " Mercury	15/10th in <sup>2</sup>	
10 ft. Sand	2482	2500		" " Pressure		
10 Ft. Sand				Open Flow	681,000 Cu. Ft.	
Gordon Stray				CONNECTED TO MAIN LINE		
Gordon Sand						
10th Sand				Length of Line		Feet
10th Sand	2870		Gas 2922	Size of Line		Inch
Bayard Sand				DISCONNECTED FROM LINE		
Elizabeth						
Winchley				Notified Lessee		
Bradford				Abandoned		
Producing Sands				Repacked	Oct. 4, 1933	
				With	2944 Feet 3" Tubing	

Total Depth 2945 Feet at \$ per Foot \$

CASING RECORD

SIZE	CHANGED		PUT IN WELL		PULLED		LEFT IN WELL		TRANSFERRED		LEFT AT WELL	
	Feet	Inches	Feet	Inches	Feet	Inches	Feet	Inches	Feet	Inches	Feet	Inches
10"			575	10 (1/2)	575							
8"			1412		1220							
6-5/8"			1800				1800					
5-3/16"			350				350					
3"			2944				2944					

Cemented in Well by \_\_\_\_\_ Company Employee

061-0405

PACKER

WELL SHOT

KIND	SIZE	DEPTH	DATE	BY	QUANT	DEPTH	DATE
Anchor	5 3/16" x 3"	2908	10/4/33	M-1,00	10	5th Sand Gas-2022	9/29/33
Anchor	6 5/8" x 3"	1867	10/4/33				

Additional Formations

HISTORY OF WELL

Formation	Top	Bottom
Buff Sand	110	180
E. Morris Coal.	180	185
Apelton Sand	420	456
Urphy Sand	785	820
Big Dunkard	1120	1210
Quaw Sand	2020	2075

Drilling reports for 1932 showed this well to be bridged. Hole was cleaned out during September 1933, and completed on October 4, 1933, under authority of J. O. #895. Hole found to be bridged at 1900ft. Well tested 76,000 cu.ft. per day before bridge was removed. Bridge was loose and drove down very easily. Oil and water filled hole up 1000 ft. under bridge. Harry Wilson did not believe the 1000 ft. of oil and water to be solid fluid, thought gas was holding it up. Hole cleaned out to bottom (2945 ft.). Test after cleaning out showed 153,593 cu.ft. per day

Well shot in 5th Sand with 10 quarts September 29, 1933, increasing open flow to 230,439 cu.ft. per day. Open flow remained the same after well was tubed and job completed.

2944 ft. of 3" tubing with two packers run in hole. 1st Packer: 5 3/16" x 3" set at 2908 ft. with 36 ft. of anchor below. One joint of anchor, perforated with 3/8" holes. 2nd Packer: 6 5/8" x 3" set at 1867 ft. One joint below packer perforated with 3/8" holes.

Job completed October 4, 1933.