

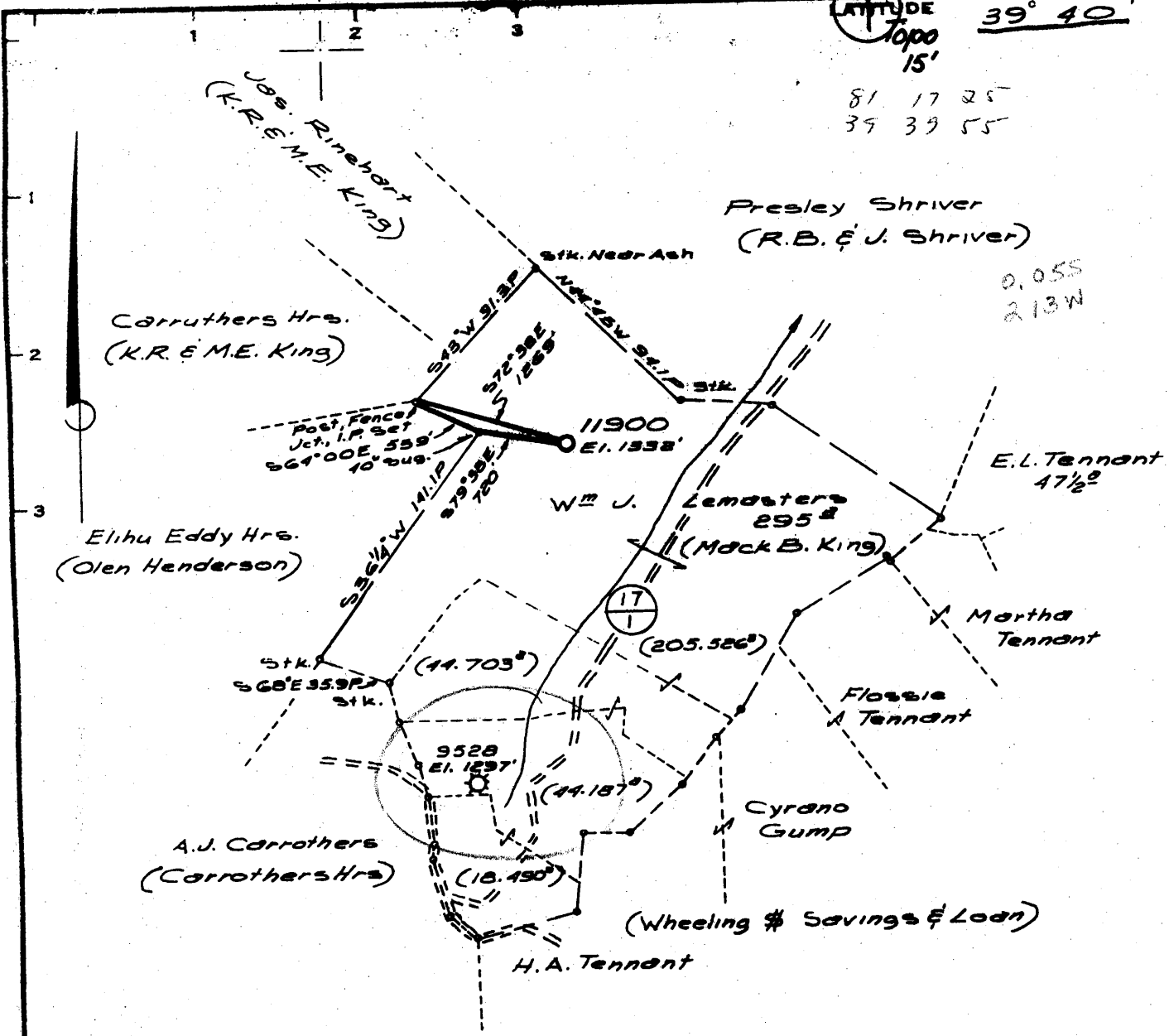
W.M.

11,150'

LATITUDE $39^{\circ} 40' 15''$

81 17 25
39 39 55

LONGITUDE 80 15'



Minimum Error of Closure 1' in 200'

Source of Elevation B.M. - Consolidated Gas Supply Corp.

Well No 9528 - Elev. 1297'

"I, the undersigned, hereby certify that this map is correct to the best of my knowledge and belief and shows all the information required by paragraph 6 of the rules and regulations of the oil and gas section of the mining laws of West Virginia."

- New Location
- Drill Deeper
- Abandonment

Map Sheet 17 N-15, E-19

FA 1722

Consolidated Gas

J Lemasters

CO # 9523

Buttall
Wade
man

Mon 396