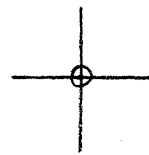


LATITUDE 39° 42' 30"

LONGITUDE 80° 51' 00"



7.5 OGIS topo location

7.5' loc 2195 15' loc _____
 0.92w (calc.) _____

Comp _____

Farm _____

Quad WADESTOWN 7 1/2'

County MONONGALIA

District BATTELLE

Elev 1075 ± (Topo)

WELL LOCATION MAP

File No. 061 - 0393

HOPE NATURAL GAS COMPANY

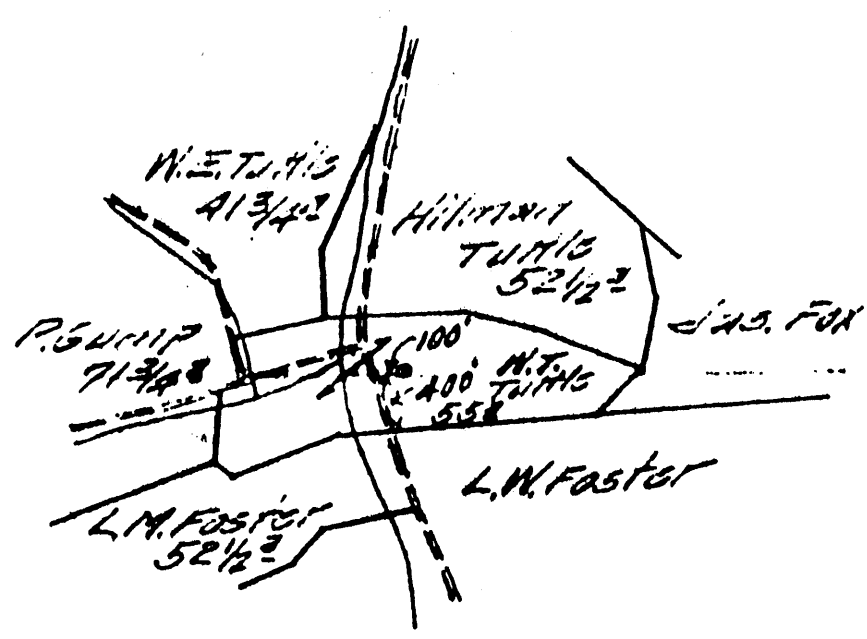
LOCATION FOR WELL No. *4120*

1-H
Instructions *11*

Shannon DISTRICT
Farm, on waters of *Shannon River*
District, *Shannon* County, West Virginia

case No. *96* Acres *56* N. *16* S. *16* E. *20* W.

Scale one inch equals *800* feet Location made in Pittsburgh *Mar. 15, 1917* Sent to Clarksburg *May 15, 1917*
Location to be *100 feet from County road at a point 400 feet from E. M. Foster farm, as per plat.*



Well Book _____
Lease Deck _____
Well Map *1917* J.C.L.
Site Map *1917* J.C.L.
Plans *1917* B.B.S.

17

No Abstract

PERMIT NO. - *061-0393*

TITLE RESERVE
As per lease on which located well on or before July 15, 1917

SPECIAL INSTRUCTIONS: COMPLETE WELL ON OR BEFORE *July 15, 1917*
Same Lease on which Located Well No.

Location made *3-20-17* by *W. Custer* As per plat, except as noted. On field map

3-22-17 Returned to Pittsburgh *3-22-17*

Location changed on account of
Authorized by _____ Date _____ Signed _____

Record of *Mon 343* District *Trinidad* Farm
 No. *4820* dated on *H. E. Little*
 District *Kittling* County *Morronguan* State *T.Va.*

Location Made *March 20 1917* First Work Done *March 26 1917*
 Commenced *April 27 1917* Rig Completed *May 2 1917*
 Drilling Commenced *May 21 1917* Drilling Completed *July 13 1917*
 Contractor *Blaine Drilling Co. Drilling*
 Drillers *James Thompson*
 Dressers *Theodore Wilson*

| FORMATION | TOP | BOTTOM | Steel Line Measurements | Water Found Depth | Oil Found Depth | Gas Found Depth | REMARKS |
|-----------|------|--------|-------------------------|-------------------|-----------------|-----------------|-----------------------|
| Coal | 425 | 428 | | | | | |
| Arg Coal | 767 | 777 | 8.L | 110 | | | Fresh water |
| Dunkard | 1195 | 1225 | | | | | |
| Dunkard | 1305 | | | | | | |
| and | 1546 | 1556 | 8.L. | | | | |
| Salt | 1585 | | | | | | |
| d Salt | 1680 | | | 1750 | | | Fresh water |
| " | | | | | | | |
| Lum | 1700 | 1741 | 8.L. | | | | |
| Cave | 1770 | 1980 | 8.L. | | | | |
| ine | 1980 | 2030 | 8.L. | | | | |
| njun | 2050 | | 8.L. | 2132 | | | Salt water |
| " | | | | | 2132 | 2045 | Honolulu 1" Estimated |
| " | | | | | | 2048 | 3/4" water 1" " |
| " | | | | | | 2129 | Flourish 1" " |
| Foot | | | | | | | |
| y Foot | | | | | | | |
| on Stray | | | | | | | |
| on | | | | | | | |
| th | | | | | | | |
| id | | | | | | | |
| Depth | | 2147 | | | | 2147 | |

| SIZE | Charged to Well | | Put in Well | | Pulled Out | | Left in Well | | Transferred Before Completing | | Left in Well Not in Use | | If more than two strings of casing are left in hole, give reasons for leaving additional strings |
|------|-----------------|-----|-------------|-----|------------|-----|--------------|-----|-------------------------------|-----|-------------------------|-----|--|
| | Feet | In. | Feet | In. | Feet | In. | Feet | In. | Feet | In. | Feet | In. | |
| 10" | 962 | 6 | 813 | 8 | 813 | 8 | none | | 61 | 2 | 901 | 4 | |
| 14" | 1773 | 1 | 1561 | 8 | none | | 1561 | 8 | none | | 211 | 5 | |
| 18" | 2162 | 5 | 2006 | 8 | none | | 2006 | 8 | none | | 155 | 9 | |
| 16" | | | | | | | | | | | | | |
| Tbr. | | | | | | | | | | | | | |

PACKER RECORD

| SIZE | KIND | Amount Anchor | Amount Above Anchor | REMARKS |
|-------|------|---------------|---------------------|---|
| 8 1/4 | Shoe | | 1550 1990 | Steel line measurement of Shoulder " " " " |

SHOOTING RECORD (If shot before or upon completion of well)

| DATE | Gauge | Top of Shot | Bottom of Shot | Diameter | Sand | Test Before Shot | | | Test After Shot | | | Test Taken After Shot No. Hours | By Whom Shot |
|------|-------|-------------|----------------|----------|------|------------------|--------|---------|-----------------|--------|---------|---------------------------------|--------------|
| | | | | | | Reading | Liquid | Opening | Reading | Liquid | Opening | | |
| | | | | | | | | | | | | | |

CEMENTING RECORD

Well Book *Aug 31, 1917*
 Date *Leave Book* Size Hole Cemented..... Size Casing Cemented.....
 Top *Well Map AUG 9 1917 J.O.L.* Top Cementing..... Amount Cement Used.....
 Bottom *Well Map AUG 27 1917 J.O.L.* Bottom Cementing..... Amount Sand Used.....
 Mr. *Speets AUG 23 1917 H.C.* of..... Coal Company on ground when coal was cemented
 Remarks..... Signature of persons who cemented well
Not Cemented

PERMIT NO-061-0393 Approved by..... Foreman