

WW-7
8-30-06



West Virginia Department of Environmental Protection
Office of Oil and Gas
WELL LOCATION FORM: GPS

API: 47-061-00343 WELL NO.: WV 460671 (Lemasters W-11900)

FARM NAME: Wm. J. Lemasters

RESPONSIBLE PARTY NAME: EQT Production Company

COUNTY: Monongalia DISTRICT: Battelle

QUADRANGLE: Wadestown 7.5'

SURFACE OWNER: Kent A. Leonhardt

ROYALTY OWNER: Billy Atkins Agent, et al.

UTM GPS NORTHING: 4390882

UTM GPS EASTING: 560971 GPS ELEVATION: 405 m (1328 ft)

The Responsible Party named above has chosen to submit GPS coordinates in lieu of preparing a new well location plat for a plugging permit or assigned API number on the above well. The Office of Oil and Gas will not accept GPS coordinates that do not meet the following requirements:

1. Datum: NAD 1983, Zone: 17 North, Coordinate Units: meters, Altitude: height above mean sea level (MSL) – meters.
2. Accuracy to Datum – 3.05 meters
3. Data Collection Method:
Survey grade GPS _____ : Post Processed Differential _____
Real-Time Differential _____
Mapping Grade GPS X : Post Processed Differential X
Real-Time Differential _____

4. Letter size copy of the topography map showing the well location.

I the undersigned, hereby certify this data is correct to the best of my knowledge and belief and shows all the information required by law and the regulations issued and prescribed by the Office of Oil and Gas.

RECEIVED
Office of Oil and Gas

MAY 7 2019

WV Department of
Environmental Protection


Signature

PS# 2180
Title

3/7/19
Date

Topo Quad: Wadestown 7.5'

Scale: 1" = 2000'

47-061-00343P

County: Monongalia

Date: March 7, 2019

District: Battelle

Project No: 72-20-00-08

47-061-00343 WV 460671 (Lemasters W-11900)

Topo



47-061-00343
WV 460671

NAD 27, North Zone
N:425477.54
E:1777780.58

WGS 84
LAT:39.665581
LONG:-80.289176
ELEV:1328.17



SURVEYING AND MAPPING SERVICES PERFORMED BY:
ALLEGHENY SURVEYS, INC.

1-800-482-8606
237 Birch River Road
Birch River, WV 26610
PH: (304) 649-8606
FAX: (304) 649-8608

PREPARED FOR:

EQT Production Company

2400 Ansys Drive, Suite 200
Canonsburg, PA 15317

RECEIVED
Office of Oil and Gas
MAY 7 2019

WV Department of Environmental Protection

Topo Quad: Wadestown 7.5'

Scale: 1" = 400'

47-061-00343P

County: Monongalia

Date: March 7, 2019

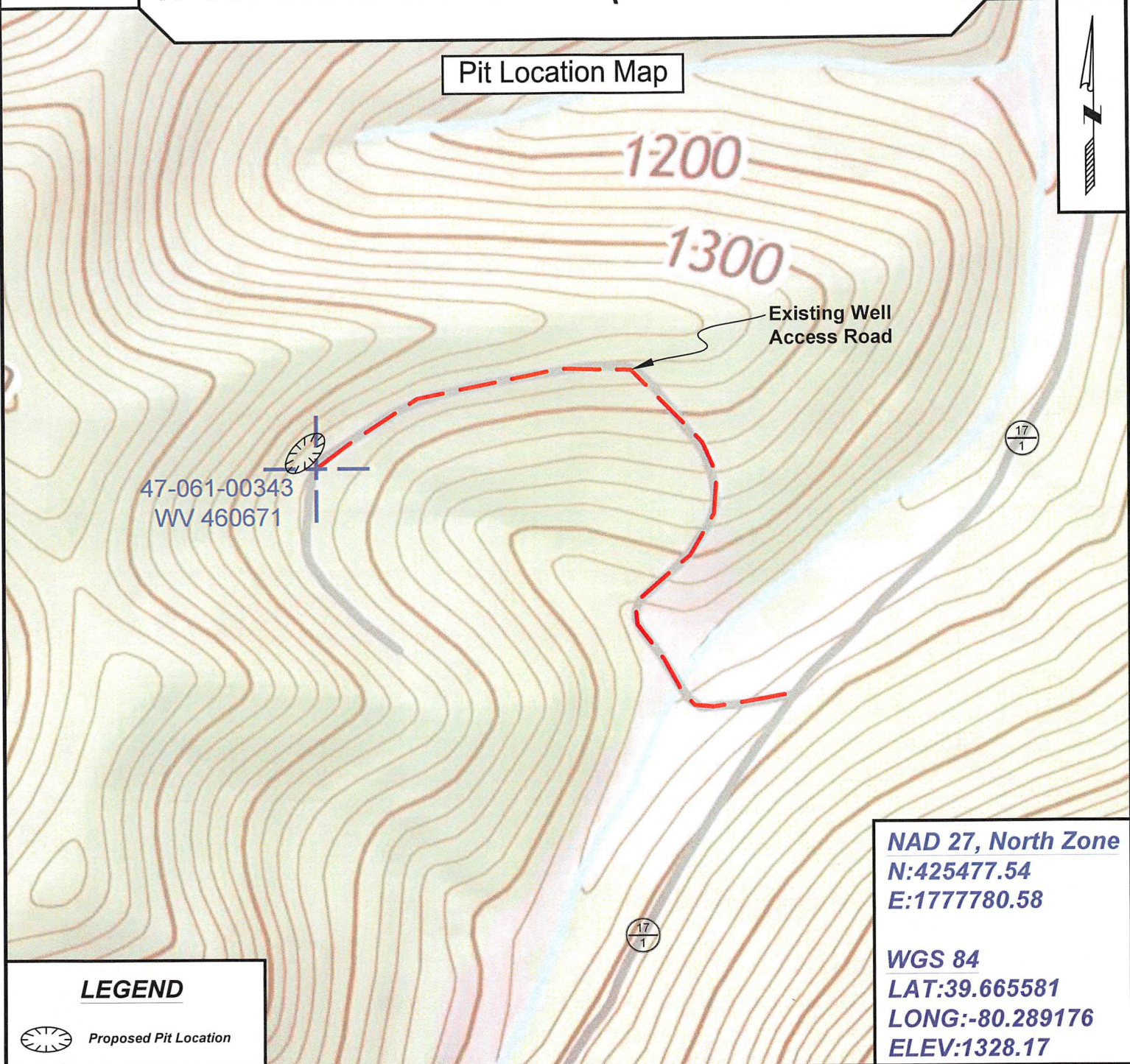
District: Battelle

Project No: 72-20-00-08


47-061-00343 WV 460671 (Lemasters W-11900)

Topo

Pit Location Map



LEGEND

 Proposed Pit Location

NAD 27, North Zone
N:425477.54
E:1777780.58

WGS 84
LAT:39.665581
LONG:-80.289176
ELEV:1328.17



SURVEYING AND MAPPING SERVICES PERFORMED BY:

ALLEGHENY SURVEYS, INC.

1-800-482-8606
237 Birch River Road
Birch River, WV 26610
PH: (304) 649-8606
FAX: (304) 649-8608

PREPARED FOR:

EQT Production Company

2400 Ansys Drive, Suite 200
Canonsburg, PA 15317

Office of Oil and Gas

MAY 7 2019

WV Department of

Env

Topo Quad: Wadestown 7.5'

Scale: 1" = 1000'

47-061-00343P

County: Monongalia

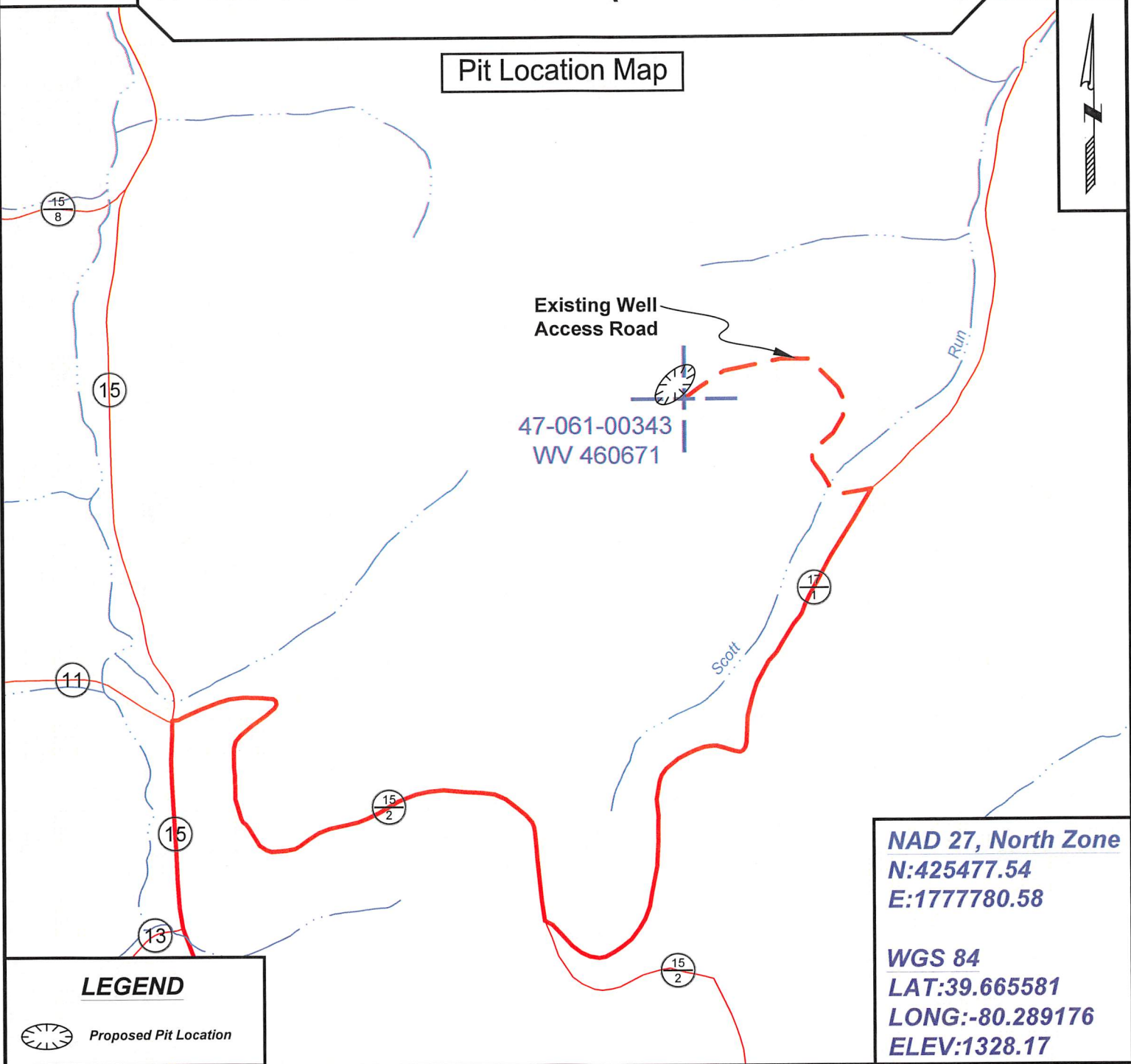
Date: March 7, 2019

District: Battelle

Project No: 72-20-00-08

Highway **47-061-00343 WV 460671 (Lemasters W-11900)**

Pit Location Map



LEGEND

 Proposed Pit Location

NAD 27, North Zone
N:425477.54
E:1777780.58

WGS 84
LAT:39.665581
LONG:-80.289176
ELEV:1328.17



SURVEYING AND MAPPING SERVICES PERFORMED BY:

ALLEGHENY SURVEYS, INC.

1-800-482-8606
237 Birch River Road
Birch River, WV 26610
PH: (304) 649-8606
FAX: (304) 649-8608

PREPARED FOR:

EQT Production Company

2400 Ansys Drive, Suite 200
Canonsburg, PA 15317

RECEIVED
Office of Oil and Gas
MAY 7 2019

WV Department of
Environmental Protection