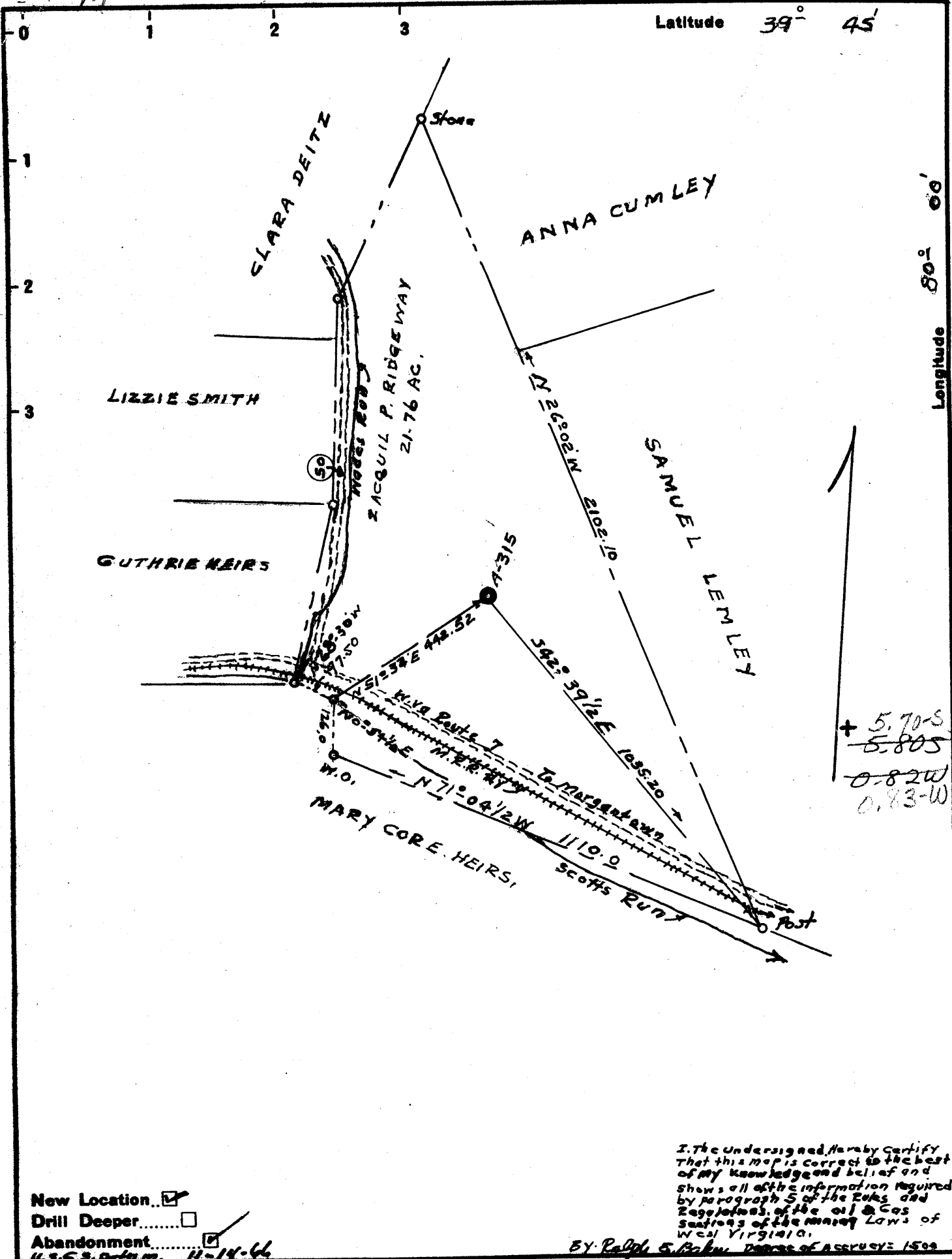


5-1966-45



+ 5.70-S
 - 5.80-S
 0.82-W
 0.83-W

I, the undersigned, hereby certify that this map is correct to the best of my knowledge and belief and shows all of the information required by paragraph 5 of the Rules and Regulations of the Oil & Gas Section of the Mining Laws of West Virginia.

BY: Ralph E. Baker, DEPT. OF ASSURANCE 1599

New Location...
 Drill Deeper.....
 Abandonment.....
 U.S.G.S. Datum 11-14-66

Company ALLEGHENY LAND & MINERAL Co.
 Address 318 PROFESSIONAL BUILDING CLARKSBURG, W.VA.
 Farm ZACQUIL P. RIDGEWAY
 Tract _____ Acres 21.76 Lease No. _____
 Well (Farm) No. #1 Serial No. A-315
 Elevation (Spirit Level) 1015.10
 Quadrangle BLACKSVILLE - NE
 County MONONGALIA District CASS
 Engineer Ralph E. Baker
 Engineer's Registration No. 441
 File No. 2-190-247 Drawing No. 7654
 Date MAY-2-1966 Scale: 1" = 300'

STATE OF WEST VIRGINIA
 DEPARTMENT OF MINES
 OIL AND GAS DIVISION
 CHARLESTON
 Issued Plugging Permit 11-14-66
WELL LOCATION MAP
 FILE NO. Mon-288 294 295
 CORRECTED permit No.
 + Denotes location of well on United States Topographic Maps, scale 1 to 62,500, latitude and longitude lines being represented by border lines as shown.
 - Denotes one inch spaces on border line of original tracing.



STATE OF WEST VIRGINIA
DEPARTMENT OF MINES
OIL AND GAS DIVISION

Rotary
Spudder
Cable Tools
Storage

Quadrangle _____

WELL RECORD

Permit No. Mon-295

Oil or Gas Well Dry
(KIND)

Company Allegheny Land & Mineral Co.
Address Clarksburg, W. Va.
Farm Zacquil P. Ridgeway Acres 21.76
Location (waters) _____
Well No. A-315 Elev. 1015
District Cass County Monongalia
The surface of tract is owned in fee by Consolidated
Osage, W. Va. Address Coal Op.
Mineral rights are owned by Same as above
Address _____
Drilling commenced June 15, 1966
Drilling completed Sept. 15, 1966
Date Shot _____ From _____ To _____
With _____
Open Flow _____ /10ths Water in _____ Inch
_____ /10ths Merc. in _____ Inch
Volume _____ Cu. Ft.
Rock Pressure _____ lbs. _____ hrs.
Oil _____ bbls., 1st 24 hrs.
WELL ACIDIZED _____
WELL FRACTURED _____

| Casing and Tubing | Used in Drilling | Left in Well | Packers |
|-------------------|------------------|--------------|----------------|
| Size | | | Kind of Packer |
| 16 | 65' | left | |
| 18 | | | |
| 10 | 188" | left | Size of |
| 8 1/4 | 1104 | out | |
| 6 3/8 | 1486 | out | Depth set |
| 5 3/16 | | | |
| 3 | | | Perf. top |
| 2 | | | Perf. bottom |
| Liners Used | | | Perf. top |
| | | | Perf. bottom |

CASING CEMENTED 4 1/2 SIZE 1135 No. Ft. 9-16-66 Date

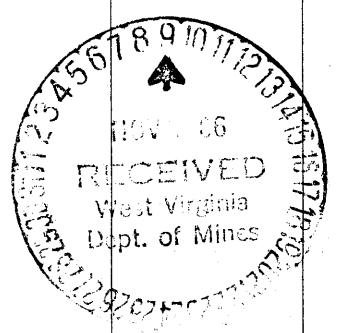
COAL WAS ENCOUNTERED AT 152 FEET 72 INCHES
____ FEET _____ INCHES _____ FEET _____ INCHES
____ FEET _____ INCHES _____ FEET _____ INCHES

RESULT AFTER TREATMENT _____

ROCK PRESSURE AFTER TREATMENT _____

Fresh Water 82' Feet Salt Water _____ Feet

| Formation | Color | Hard or Soft | Top | Bottom | Oil, Gas or Water | Depth | Remarks |
|-----------|-------|--------------|-----|--------|-------------------|-------|-------------------|
| Soil | | | 0 | 8 | | | |
| Sand | | | 8 | 16 | | | |
| slate | | | 16 | 50 | | | |
| lime | | | 50 | 95 | water | 82' | 1 1/2 bailers Hr. |
| sand | | | 95 | 118 | | | |
| slate | | | 118 | 123 | | | |
| lime | | | 123 | 143 | | | |
| slate | | | 143 | 152 | | | |
| Coal *** | | | 152 | 158** | | | |
| lime | | | 158 | 165 | | | |
| slate | | | 165 | 172 | | | |
| lime | | | 172 | 200 | | | |
| slate | | | 200 | 218 | | | |
| lime | | | 218 | 230 | | | |
| slate | | | 230 | 247 | | | |
| sand | | | 247 | 273 | | | |
| slate | | | 273 | 290 | | | |
| lime | | | 290 | 302 | | | |
| slate | | | 302 | 310 | | | |
| lime | | | 310 | 320 | | | |
| slate | | | 320 | 325 | | | |
| r. rock | | | 325 | 330 | | | |
| slate | | | 330 | 358 | | | |
| lime | | | 358 | 367 | | | |
| slate | | | 367 | 380 | | | |
| lime | | | 380 | 420 | | | |
| slate | | | 420 | 425 | | | |
| r. rock | | | 425 | 440 | | | |
| slate | | | 440 | 450 | | | |



| Formation | Color | Hard or Soft | Top | Bottom | Oil, Gas or Water | Depth Found | Remarks |
|----------------|-----------------------|--------------|------|--------|-------------------|-------------|-----------|
| lime | | | 450 | 458 | | | |
| slate & shells | | | 458 | 470 | | | |
| r. reek | | | 470 | 490 | | | |
| slate | | | 490 | 498 | | | |
| lime | | | 498 | 510 | | | |
| r. reek | | | 510 | 518 | | | |
| slate | | | 518 | 530 | | | |
| lime | | | 530 | 538 | | | |
| r. reek | | | 538 | 543 | | | |
| lime | | | 543 | 555 | | | |
| r. reek | | | 555 | 560 | | | |
| lime | | | 560 | 570 | | | |
| r. reek | | | 570 | 575 | | | |
| lime | | | 575 | 605 | | | |
| slate | | | 605 | 610 | | | |
| sand | | | 610 | 630 | | | |
| slate | | | 630 | 635 | | | |
| lime | | | 635 | 642 | | | |
| sand | | | 642 | 655 | | | |
| lime | | | 655 | 722 | | | |
| sand | | | 722 | 937 | | | |
| slate | | | 937 | 968 | | | |
| sand | | | 968 | 986 | | | |
| slate | | | 986 | 990 | | | |
| sand | | | 990 | 1058 | | | |
| slate | | | 1058 | 1063 | | | |
| lime | | | 1063 | 1075 | | | |
| sand | | | 1075 | 1097 | | 1085 | |
| slate | | | 1097 | 1118 | water(salty) | 085 | hole full |
| sand | | | 1118 | 1218 | | | |
| lime | | | 1218 | 1285 | water(salt) | 1140 | hole full |
| r. reek | | | 1285 | 1290 | | | |
| lime | | | 1290 | 1380 | | | |
| slate | | | 1380 | 1388 | | | |
| lime | | | 1388 | 1397 | | | |
| slate | | | 1397 | 1407 | | | |
| lime | | | 1407 | 1450 | | | |
| slate | | | 1450 | 1455 | | | |
| lime | | | 1455 | 1527 | | | |
| sand | Big Lime INTUN 371 | | 1527 | 1660 | gas | 1628-32 | 20 met. |
| slate | | | 1660 | 1725 | | | |
| sand | | | 1725 | 1765 | | | |
| slate | | | 1765 | 1785 | | | |
| sand | | | 1785 | 1830 | | | |
| lime | | | 1830 | 1965 | | | |
| sand | | | 1965 | 1985 | | | |
| slate | | | 1985 | 1995 | | | |
| lime | | | 1995 | 2044 | | | |
| sand | | | 2044 | 2059 | | | |
| lime | | | 2059 | 2062 | | | |
| sand | | | 2062 | 2165 | | | |
| lime | | | 2165 | 2172 | | | |
| sand | | | 2172 | 2195 | | | |
| slate | | | 2195 | 2222 | | | |
| lime | | | 2222 | 2245 | | | |
| sand | | | 2245 | 2275 | | | |
| lime | | | 2275 | 2370 | | | |
| slate | | | 2370 | 2442 | | | |
| sand | | | 2442 | 2482 | | | |
| slate | | | 2482 | 2500 | | | |
| lime | | | 2500 | 2515 | | | |
| sand | | | 2515 | 2560 | | | |
| slate | | | 2560 | 2570 | | | |
| sand | | | 2570 | 2635 | Gas | 2612 | 30 met. |
| slate | | | 2635 | 2685 | | | |

1527
1015
512

UPPER DEVONIAN

Date Nov. 8, 19 66
 APPROVED Allegheny Land & Mineral Co. Owner
 By CLAREN DAWSON
 (Title)