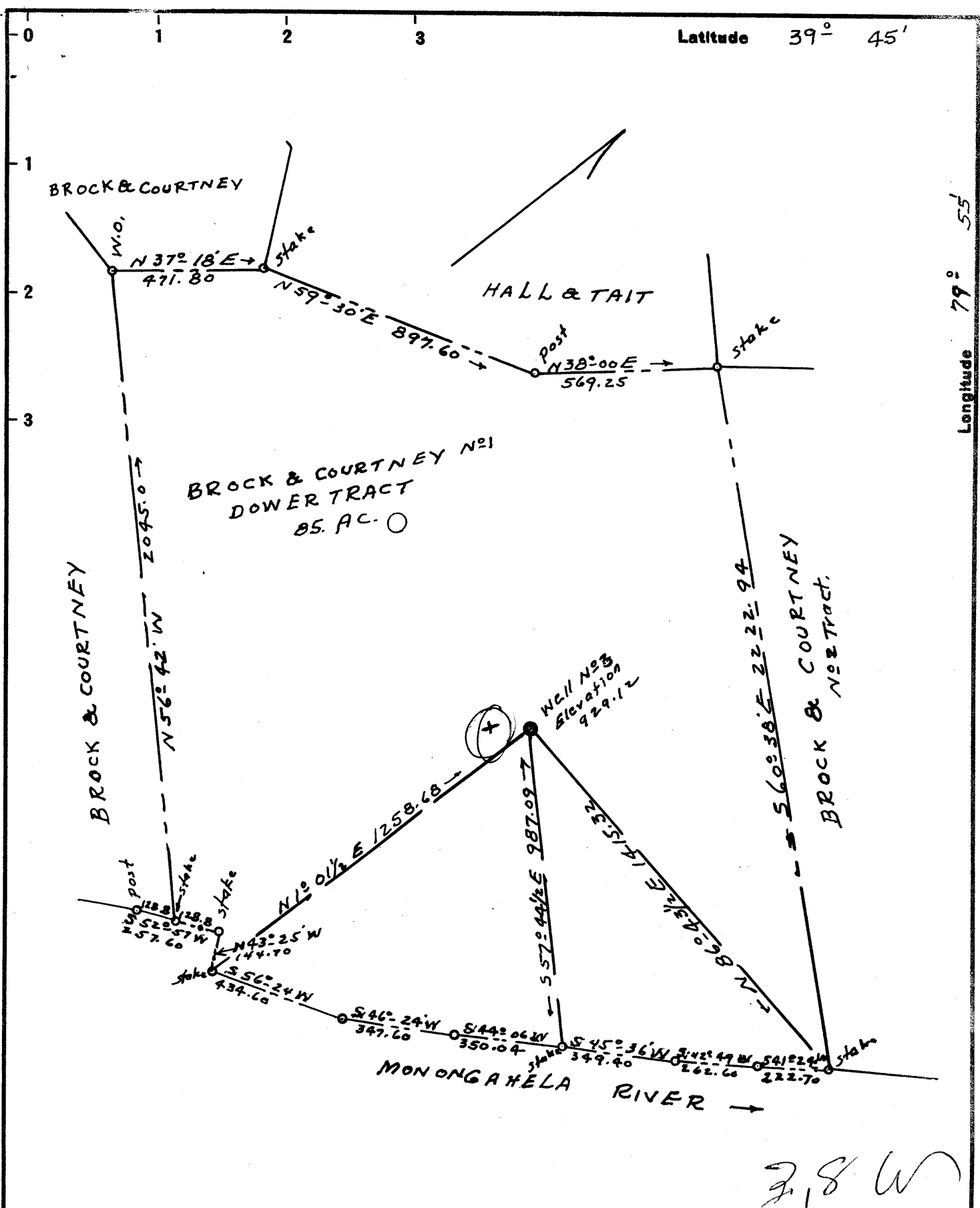


Latitude 39° 45'

Longitude 79° 55'



New Location...   
 Drill Deeper.....   
 Abandonment.....

SEP 25 1962

7.8 W  
 5.6 D

Company H.C. WILSON  
 Address 1285 Fairlawns Avenue, Morgantown, W. Va.  
 Farm BROCK & COURTNEY  
 Tract Dower Acres 85 Lease No. 1  
 Well (Farm) No. 3 Serial No.           
 Elevation (Spirit Level) 929.12  
 Quadrangle Morgantown, W. Va.  
 County Monongalia District Cass  
 Engineer Ralph E. Baker  
 Engineer's Registration No. 441  
 File No. 2-19D-234 Drawing No. 9271  
 Date Aug. 28, 1962 Scale: 1" = 400'

STATE OF WEST VIRGINIA  
 DEPARTMENT OF MINES  
 OIL AND GAS DIVISION  
 CHARLESTON

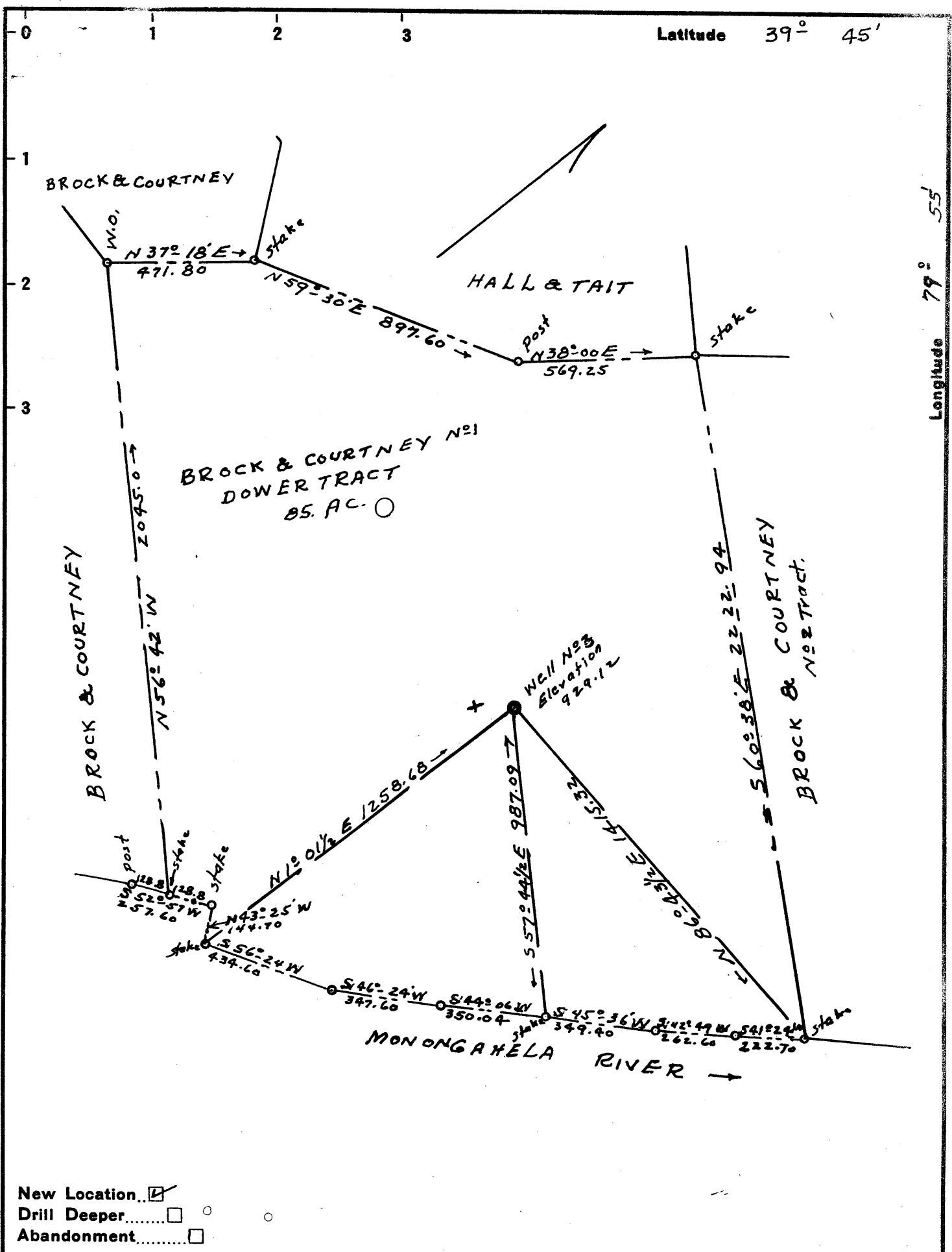
**WELL LOCATION MAP**  
 FILE NO. MOX-261-Cancelled

+ Denotes location of well on United States Topographic Maps, scale 1 to 62,500, latitude and longitude lines being represented by border lines as shown.

- Denotes one inch spaces on border line of original tracing.

Latitude 39° 45'

Longitude 79° 55'



New Location...    
 Drill Deeper.....    
 Abandonment.....

Company H.C. WILSON  
 Address 1285 Fairlawns Avenue Morgantown, W.Va.  
 Farm BROCK & COURTNEY  
 Tract Dower Acres 85 Lease No. 1  
 Well (Farm) No. 3 Serial No. \_\_\_\_\_  
 Elevation (Spirit Level) 929.12  
 Quadrangle Morgantown, W.Va. - NW  
 County Monongalia District Cass  
 Engineer Ralph E. Baker  
 Engineer's Registration No. 441  
 File No. 2-19D-234 Drawing No. 9271  
 Date Aug. 28, 1962 Scale: 1" = 400'

STATE OF WEST VIRGINIA  
 DEPARTMENT OF MINES  
 OIL AND GAS DIVISION  
 CHARLESTON

**WELL LOCATION MAP**  
 FILE NO. MOX-261

+ Denotes location of well on United States Topographic Maps, scale 1 to 62,500, latitude and longitude lines being represented by border lines as shown.

- Denotes one inch spaces on border line of original tracing.