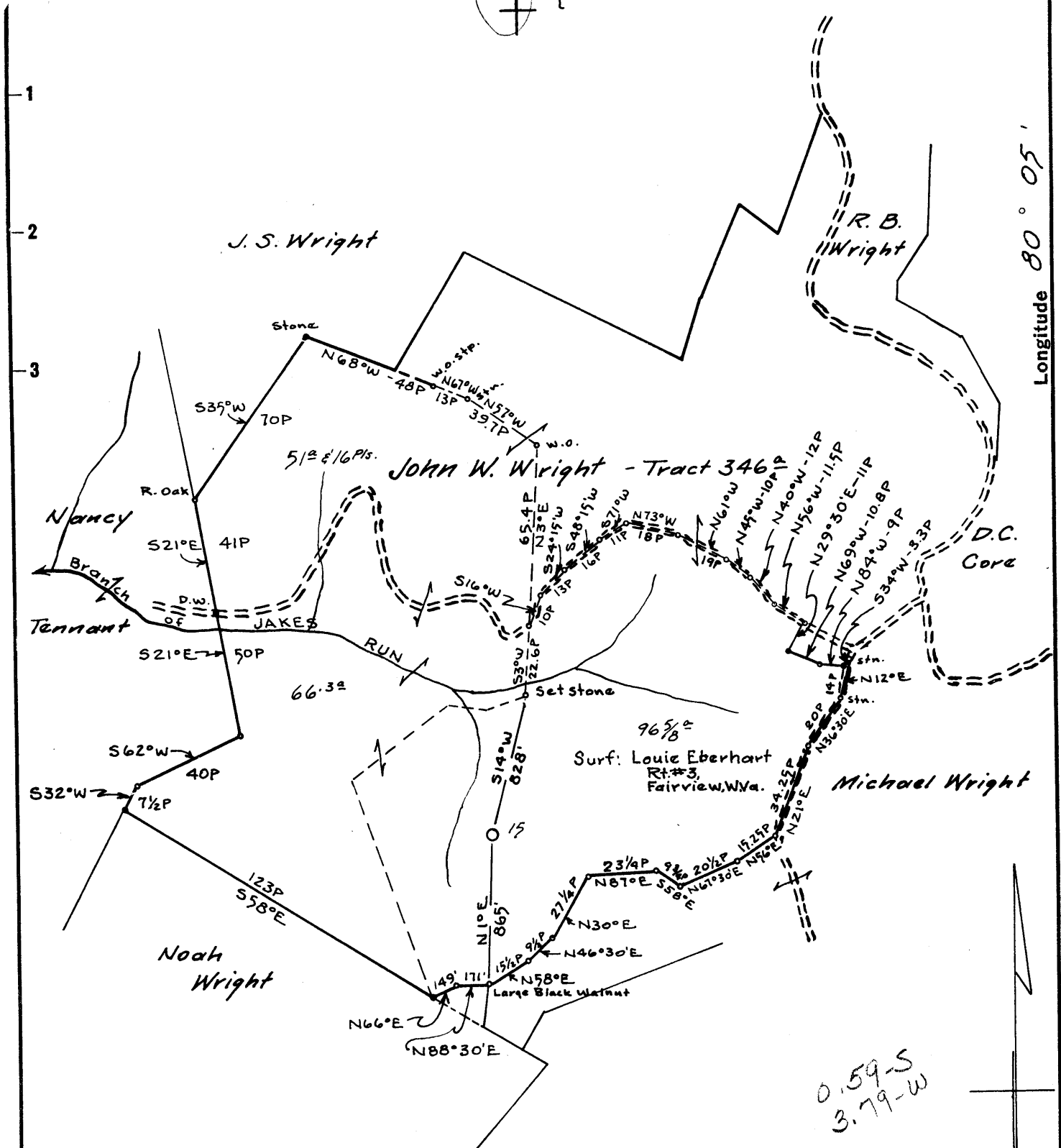


Latitude 39° 40'

Longitude 80° 05'



Surf: Louie Eberhart
Rt. #3,
Fairview, W.Va.

Coal: Christopher Coal Co.
Box 100, Osage, W.Va.

- New Location
- Drill Deeper
- Abandonment

MAP N72E N14 E26

Company SOUTH PENN OIL CO.
 Address PARKERSBURG, W.VA.
 Farm JOHN W. WRIGHT
 Tract 96 5/8^a of Acres 346^a Lease No. 13116
 Well (Farm) No. 15 Serial No. _____
 Elevation (Spirit Level) 1312.35' ground
 Quadrangle BLACKSVILLE C
 County MONONGALIA District CLAY
 Engineer A.C. Kilbent
 Engineer's Registration No. 2534
 File No. 1323 Drawing By James B. Dixon
 Date June 1, 1960 Scale 1" = 800'

STATE OF WEST VIRGINIA
DEPARTMENT OF MINES
OIL AND GAS DIVISION
CHARLESTON

WELL LOCATION MAP

FILE NO. MON-247

+ Denotes location of well on United States Topographic Maps, scale 1 to 62,500, latitude and longitude lines being represented by border lines as shown.

- Denotes one inch spaces on border line of original tracing.



STATE OF WEST VIRGINIA
DEPARTMENT OF MINES
OIL AND GAS DIVISION

Quadrangle BLACKSVILLE

WELL RECORD

Oil or Gas Well oil
(KIND)

Permit No. MON-247

Company SOUTH PENN OIL COMPANY
Address P. O. Box 1280, Parkersburg, W. Va.
Farm John W. Wright Acres 346
Location (waters) Branch of Jakes Run
Well No. 15 Elev. 1312.35'
District Clay County Monongalia
The surface of tract is owned in fee by Louie Eberhart
Rt. #3 Address Fairview, W. Va.
Mineral rights are owned by Telluric Company, et al.
Box 848 Address Morgantown, W. Va.
Drilling commenced October 27, 1960
Drilling completed December 2, 1960
Date Shot 12/7/60 From 2160' To 2203'
With _____
Open Flow /10ths Water in _____ Inch
/10ths Merc. in _____ Inch
Volume 4,000 Cu. Ft.
Rock Pressure None lbs. _____ hrs.
Oil (2) bbls., 1st 24 hrs.
WELL ACIDIZED _____

Casing and Tubing	Used in Drilling	Left in Well	Packers
Size			Kind of Packer _____
16			
13			
10 3/4"	812'	812'	Size of _____
8 5/8"	1666'	1666'	
8 7"	2110'	2110'	Depth set _____
5 3/16			
3			Perf. top _____
2			Perf. bottom _____
Liners Used			Perf. top _____
			Perf. bottom _____

CASING CEMENTED () SIZE _____ No. Ft. _____ Date _____

SEE RECORD BELOW
COAL WAS ENCOUNTERED AT _____ FEET _____ INCHES
_____ FEET _____ INCHES
_____ FEET _____ INCHES

WELL FRACTURED _____

RESULT AFTER TREATMENT _____

ROCK PRESSURE AFTER TREATMENT _____

Fresh Water _____ Feet Salt Water _____ Feet

Formation	Color	Hard or Soft	Top	Bottom	Oil, Gas or Water	Depth	Remarks
Conductor				18			
Yellow Clay			0	25			
Gray Slate			25	34			
Red Rock			34	40			
Slate			40	90			
Red Rock			90	98			
Lime			98	105			
Gray Slate			105	135			
Red Rock			135	140			
Lime			140	170			
Red Rock			170	175			
Lime			175	204			
Dark Slate			204	275			
Lime			275	310			
Sand			310	340			
Slate			340	353			
Coal			353	355			
Slate & Shells			355	372			
Lime			372	388			
Sand			388	410			
Slate			410	418			
Coal			418	423			
Slate			423	440			
Gritty Lime			440	460			
Slate			460	467			
Lime			467	655			
Sand			655	689			
Mptn. Coal			689	694			

(4 - 13" bail water per hr.)

Formation	Color	Hard or Soft	Top ↗	Bottom	Oil, Gas or Water	Depth Found	Remarks
Lime			694	758			
Slate			758	772			
Pgh. Coal			772	778			
Slate & Shells			778	988			(Hole full water at 778')
Murphy Sand			988	1004			
Gritty Lime			1004	1012			
Red Rock			1012	1020			
Lime			1020	1056			
Slate			1056	1072			
Red Rock			1072	1098			
Lime			1098	1115			
Sand			1115	1135			
Slate			1135	1168			(Show gas at 1123')
Lime			1168	1176			
Slate & Shells			1176	1210			
Sand			1210	1221			
Slate & Shells			1221	1282			
Big Dunkard			1287	1387			
Slate & Shells			1357	1423			(Gas at 1307') (9.2" w/1½)
Sand			1423	1450			
Slate			1450	1461			
Freeport Coal			1461	1465			
Slate & Shells			1465	1550			
Sand			1550	1600			
Dark Slate			1600	1622			
Gritty Lime			1622	1637			
Slate			1637	1642			
Salt Sand			1642				
					Water	1670	
					Water	1720-1730	(2-8" bailers hr.) (Hole Full)
Dark Slate			1758	1763			
Slate & Shells			1763	1880			
Red Rock			1880	1895			
Slate			1895	1937			
Red Rock			1937	1943			
Slate & Shells			1943	2005			
Broken Lime			2005	2075			
Big Injun Sand 371			2075	2231			
Slate & Shells			2231				
TOTAL DEPTH				2248			
Cored			2151	2157	Gas (Show)	2151	
Cored			2183	2192	Oil (Show)	2175-2190	
FILLED BACK TO				2203			

Date April 28, 1961

APPROVED SOUTH PENN OIL COMPANY, Owner

By George W. Wilsman
George W. Wilsman (Title) Land Agent