

Latitude

.645
1.10w

Longitude

Topo Location

7.5' Loc. _____ 15' Loc. _____
 _____ (calc.) _____

Company Keystone Gas

Farm Willard W Hodge

15' Quad _____
(sec.)

7.5' Quad Morgantown North

District Union

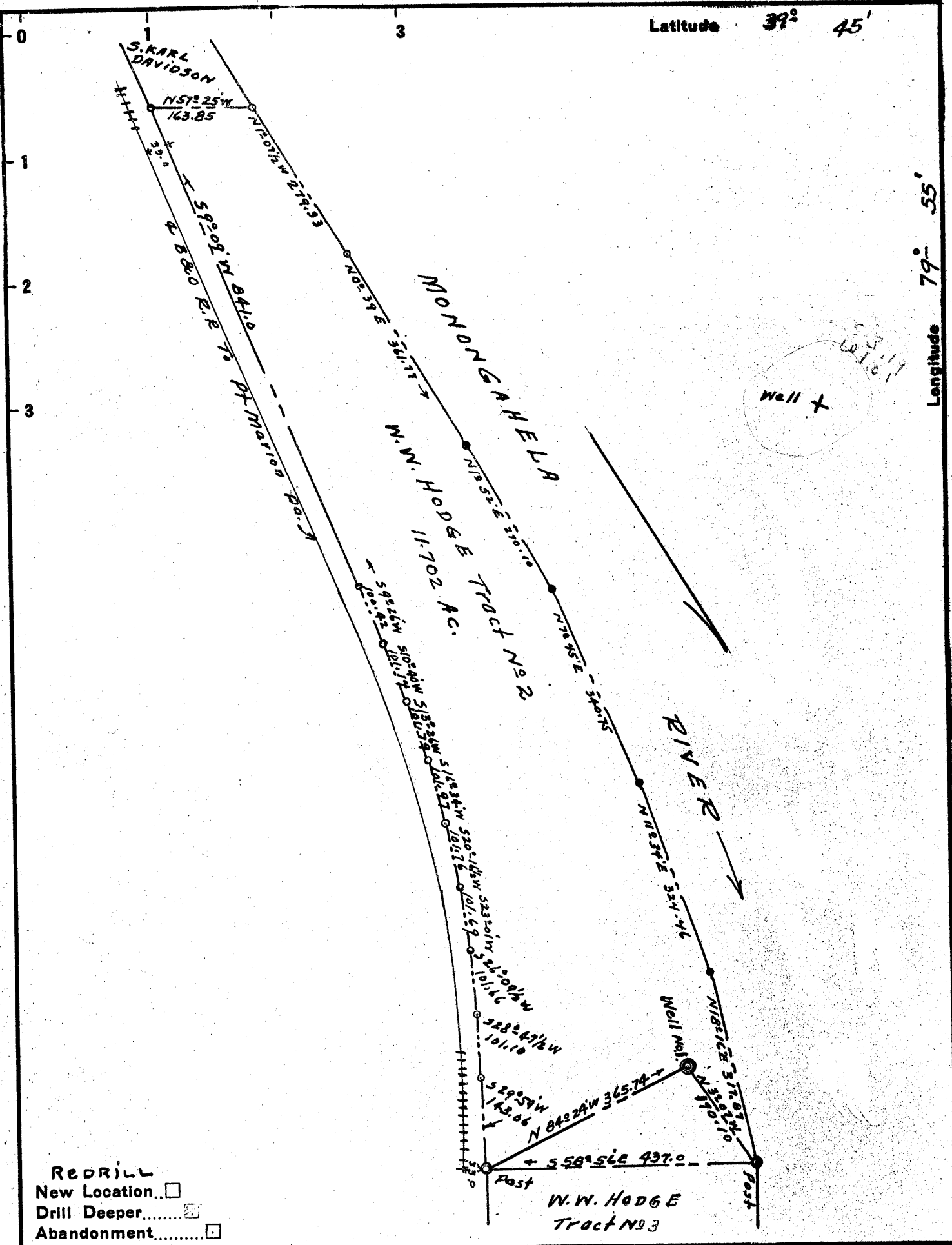
WELL LOCATION PLAT

County 061 Permit 232

1100155061

Latitude 39° 45'

Longitude 79° 55'



Redrill
 New Location
 Drill Deeper
 Abandonment

Company KEYSTONE GAS Co.
 Address CITIZENS TRUST BLDG. CANNONSBURG Pa.
 Farm WILLARD W. HODGE
 Tract No. 2 Acres 11.702 Lease No. 1
 Well (Farm) No. 1 Serial No.
 Elevation (Spirit Level) 808.50
 Quadrangle MORGANTOWN, W. Va. NW
 County Monongalia District Union
 Engineer Ralph E. Baker
 Engineer's Registration No. 441
 File No. 1-1A-2 Drawing No. 3681
 Date May. 2, 1957 Scale: 1" = 200.0

STATE OF WEST VIRGINIA
 DEPARTMENT OF MINES
 OIL AND GAS DIVISION
 CHARLESTON

WELL LOCATION MAP
 FILE NO. MON-232-REDRILL

+ Denotes location of well on United States Topographic Maps, scale 1 to 62,500, latitude and longitude lines being represented by border lines as shown.

- Denotes one inch spaces on border line of original tracing.